

Brass WR-137 Waveguide Pressure Window with CPR137F and CPR137G Flanges

Waveguide pressure windows are used to isolate pressurized components from non-pressurized components within a waveguide system. They can also provide protection against contaminants (debris, moisture and dust) from entering the waveguide system and degrading its RF performance. The FMWGP1005 is a WR-137 waveguide pressure windows that operates in the frequency range of 5.38 GHz to 8.17 GHz. This WR-137 waveguide termination has a Max VSWR of 1.25:1. This waveguide pressure window is made of annealed copper and incorporates CPR137F and CPR137G flange interface. In addition to waveguide pressure window product line, Fairview Microwave also offers a wide range of waveguide products which are available in stock and ready for same-day shipment.

Electrical Specifications*

Description	Min	Typ	Max	Units
Frequency Range	5.38		8.17	GHz
VSWR			1.25:1	
Insertion Loss			0.2	dB
Input Power			1,000	kWatts

Mechanical Specifications

Body Material	Copper Brass
Body Finish	Passivation
Length	2.688 in [68.28 mm]
Width	1.937 in [49.2 mm]
Height	0.787 in [19.99 mm]
Weight	0.902 lbs [409.14 g]

Compliance Certifications (see [product page](#) for current document)

Brass WR-137 Waveguide Pressure Window with CPR137F and CPR137G Flanges from Fairview Microwave is in-stock and available to ship same-day. All of our RF/microwave products are available off-the-shelf from our ISO 9001:2008 certified facilities in Lewisville, Texas. Fairview Microwave is RF on-demand.

For additional information on this product, please click the following link: [Brass WR-137 Waveguide Pressure Window with CPR137F and CPR137G Flanges FMWGP1005](#)

URL: <https://www.fairviewmicrowave.com/fmwgp1005-p.aspx>

The information contained in this document is accurate to the best of our knowledge and representative of the part described herein. It may be necessary to make modifications to the part and/or the documentation of the part, in order to implement improvements. Fairview Microwave reserves the right to make such changes as required. Unless otherwise stated, all specifications are nominal. Fairview Microwave does not make any representation or warranty regarding the suitability of the part described herein for any particular purpose, and Fairview Microwave does not assume any liability arising out of the use of any part or documentation.



Features:

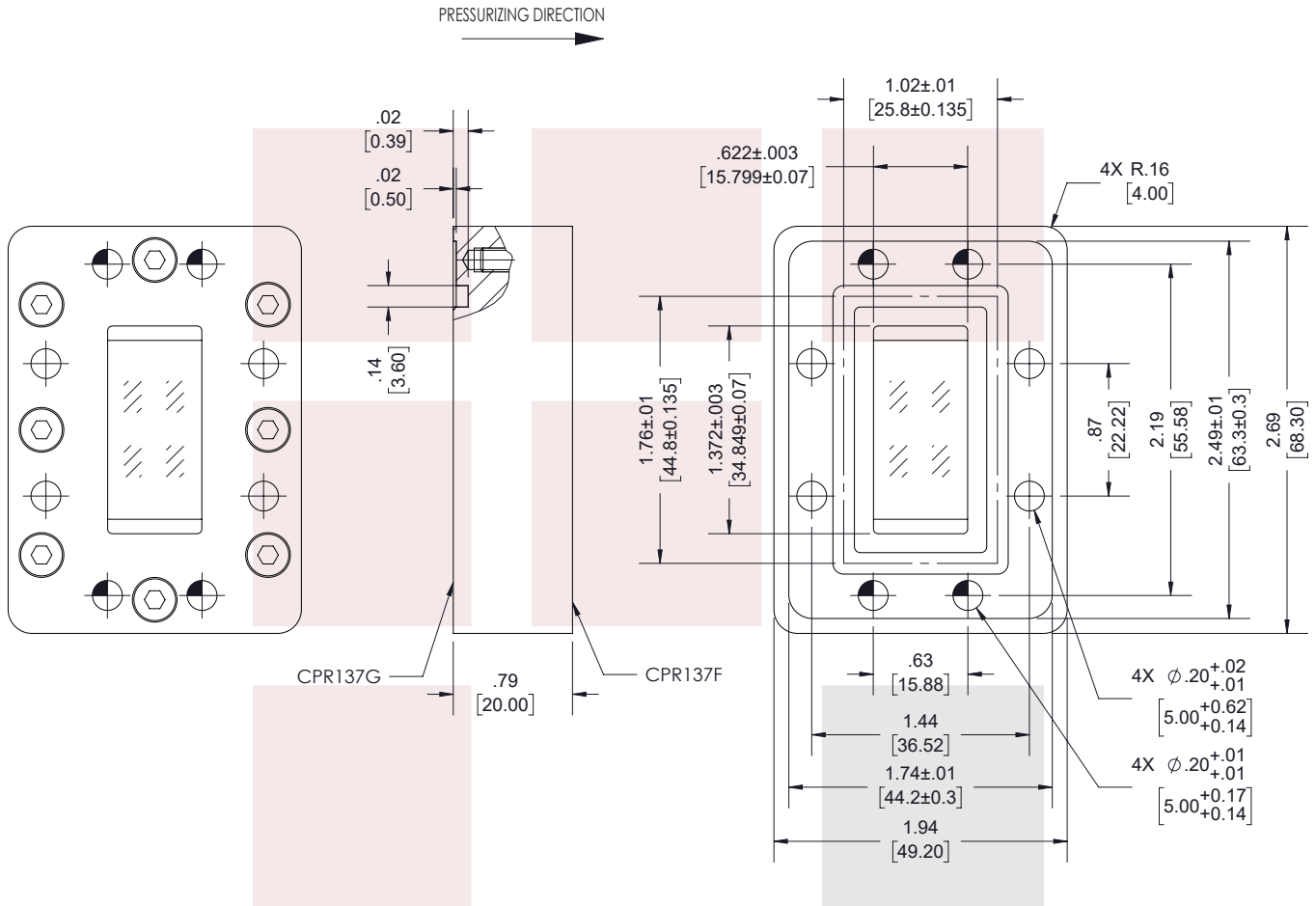
- WR-137 Waveguide
- Operating Frequency Range from 5.38 GHz to 8.17 GHz
- CPR137F and CPR137G Flanges
- 1.25:1 Max VSWR
- 1000 Watts (CW) Max Power Handling
- Insertion loss: 0.2 dB Max
- Thickness: 0.79 inches
- PTFE window material
- Pressure Handling Capability: 29 PSI Max

Applications:

- Radar Systems
- Military and Space
- Wireless Radio Systems
- Communication Systems
- R&D Labs
- Microwave Radio Systems

Fairview Microwave
 301 Leora Ln., Suite 100
 Lewisville, TX 75056
 Tel: 1-800-715-4396 / (972) 649-6678
 Fax: (972) 649-6689
www.fairviewmicrowave.com
sales@fairviewmicrowave.com

REVISIONS			
REV.	DESCRIPTION	DATE	APPROVED
A	INITIAL RELEASE	15-04-2021	SPONG



THESE COMMODITIES, TECHNOLOGY OR SOFTWARE WERE EXPORTED FROM THE UNITED STATES IN ACCORDANCE WITH THE EXPORT ADMINISTRATION REGULATIONS. DIVERSION CONTRARY TO U.S. LAW PROHIBITED.

TITLE

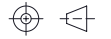
Brass WR-137 Waveguide Pressure Window with CPR137F and CPR137G Flanges

UNLESS OTHERWISE SPECIFIED LEADING DIMENSIONS ARE INCHES
DIMENSIONS IN [] ARE MILLIMETERS

TOLERANCES: CABLE LENGTH (L) TOLERANCES:

.X = ±.2 [5.08]	FRACTIONS	L ≤ 12 [305] = +1 [25] / -0
.XX = ±.02 [.51]	± 1/32	12 [305] < L ≤ 60 [1524] = +2 [51] / -0
.XXX = ±.005 [.13]	ANGLES ± 1°	60 [1524] < L ≤ 120 [3048] = +4 [102] / -0
		120 [3048] < L ≤ 300 [7620] = +6 [152] / -0
		300 [7620] < L = +5%L / -0

THIRD-ANGLE PROJECTION



THE INFORMATION AND DESIGN IN THIS DOCUMENT IS THE PROPERTY OF FAIRVIEW MICROWAVE CORPORATION. ALL RIGHTS RESERVED.

SHEET 1 OF 1

ALL DIMENSIONS SHOWN ARE FOR REFERENCE ONLY.

SCALE N/A

SIZE A	CAGE CODE 3FKR5	DRAWN BY MVEERAPPAN	ITEM NO. FMWGP1005	REV A
-----------	--------------------	------------------------	-----------------------	----------

T-Rev.D