



Relays & Contactors > Relays > Relay Accessories, Sockets & Clips



Relay Socket Type: **DIN Rail Mount**

Body Material: **Polyamide**

Pole Configuration: **2**

Relay Accessory Type: **DIN Rail Socket, Socket**

Features

Product Type Features

Relay Accessory Type	DIN Rail Socket, Socket
----------------------	-------------------------

Body Features

Body Material	Polyamide
---------------	-----------

Contact Features

Terminal Style	Screw Terminal
Relay Socket Type	DIN Rail Mount
Pole Configuration	2

Product Compliance

[For compliance documentation, visit the product page on TE.com>](#)

EU RoHS Directive 2011/65/EU	Compliant
EU ELV Directive 2000/53/EC	Compliant
China RoHS 2 Directive MIIT Order No 32, 2016	No Restricted Materials Above Threshold
EU REACH Regulation (EC) No. 1907/2006	Current ECHA Candidate List: JAN 2024 (240) Candidate List Declared Against: JAN 2023 (233) Does not contain REACH SVHC
Halogen Content	Low Halogen - Br, Cl, F, I < 900 ppm per homogenous material. Also BFR/CFR/PVC Free
Solder Process Capability	Not applicable for solder process capability



Product Compliance Disclaimer

This information is provided based on reasonable inquiry of our suppliers and represents our current actual knowledge based on the information they provided. This information is subject to change. The part numbers that TE has identified as EU RoHS compliant have a maximum concentration of 0.1% by weight in homogenous materials for lead, hexavalent chromium, mercury, PBB, PBDE, DBP, BBP, DEHP, DIBP, and 0.01% for cadmium, or qualify for an exemption to these limits as defined in the Annexes of Directive 2011/65/EU (RoHS2). Finished electrical and electronic equipment products will be CE marked as required by Directive 2011/65/EU. Components may not be CE marked. Additionally, the part numbers that TE has identified as EU ELV compliant have a maximum concentration of 0.1% by weight in homogenous materials for lead, hexavalent chromium, and mercury, and 0.01% for cadmium, or qualify for an exemption to these limits as defined in the Annexes of Directive 2000/53/EC (ELV). Regarding the REACH Regulation, the information TE provides on SVHC in articles for this part number is based on the latest European Chemicals Agency (ECHA) 'Guidance on requirements for substances in articles' posted at this URL: <https://echa.europa.eu/guidance-documents/guidance-on-reach>

Customers Also Bought



TE Part # 934922-000
RMW-75/22-1200/ADH-0



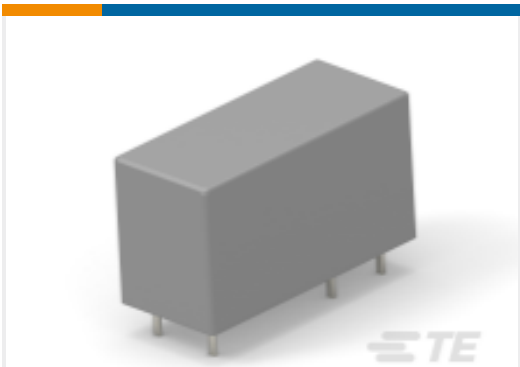
TE Part # 6-1625890-5
2W SM M/OX 5% 68K



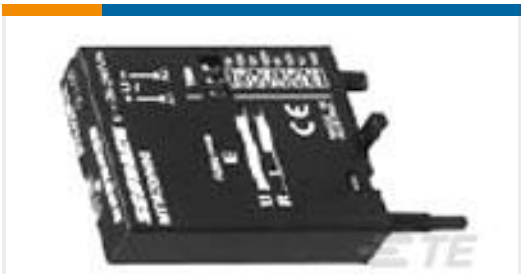
TE Part # 1825420-1
TRD13D10WL04 rocker switch



TE Part # 5500192011
SCL-3/8-0-STK



TE Part # 1649326-6
RTB14024



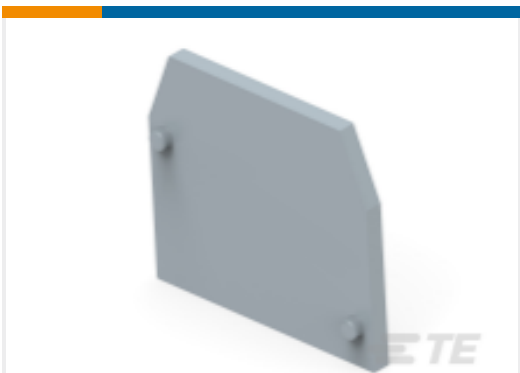
TE Part # 7-1393163-3
MTMFW00



TE Part # 7-1415043-1
MT78612



TE Part # 1SNA111033R0300
MB10/12.SF



TE Part # 1SNA118368R1600
FEM6



TE Part # 1-1102291-1
HB.24.AG-VS

Documents

- CAD Files
- Customer View Model
- ENG_CVM_CVM_8-1393163-4_A1.2d_dxf.zip
- English
- 3D PDF
- 3D



Customer View Model
[ENG_CVM_CVM_8-1393163-4_A1.3d_igs.zip](#)
English

Customer View Model
[ENG_CVM_CVM_8-1393163-4_A1.3d_stp.zip](#)
English

By downloading the CAD file I accept and agree to the [Terms and Conditions](#) of use.

Datasheets & Catalog Pages
[Accessories - Power Relay MT](#)
English

Product Specifications
[Definitions General Purpose Relays](#)
English

Agency Approvals
[UKCA_CERT_708_00013_C1](#)
English