



MQS

TE Internal #: 1379799-1

Housing for Female Terminals, Wire-to-Wire, 4 Position, .122 in [3.1 mm] Centerline, Sealable, Black, Wire & Cable, Signal, MQS

[View on TE.com >](#)

Connectors > Automotive Connectors > Automotive Housings > MQS, CONNECTOR HOUSING



Connector System: **Wire-to-Wire**

Number of Positions: **4**

Connector & Housing Type: **Housing for Female Terminals**

Centerline (Pitch): **3.1 mm [.122 in]**

Sealable: **Yes**

[All MQS, CONNECTOR HOUSING \(359\)](#)

Features

Product Type Features

Mixed & Hybrid Connector	No
Connector Shape	Rectangular
Connector System	Wire-to-Wire
Connector & Housing Type	Housing for Female Terminals
Sealable	Yes
Connector & Contact Terminates To	Wire & Cable
Primary Locking Feature	On the Terminal

Configuration Features

Number of Positions	4
Number of Rows	2

Electrical Characteristics

Operating Voltage	16 VDC
Nominal Voltage Architecture	16 V

Body Features

Cable Exit Angle	180°
Primary Product Color	Black
Connector & Keying Code	A



Contact Features

Contact Size	.63mm
Contact Type	Receptacle
Mating Tab Width	.63 mm[.025 in]
Contact Current Rating (Max)	7.5 A

Mechanical Attachment

Terminal Position Assurance	Yes
Strain Relief	Without
Mating Alignment Type	Keyed
Mating Alignment	With
Connector Mounting Type	Cable Mount (Free-Hanging)

Housing Features

Housing Material	PBT GF
Centerline (Pitch)	3.1 mm[.122 in]

Dimensions

Connector Height	15.3 mm[.602 in]
Product Width	26.2 mm[1.031 in]
Product Length	26 mm[1.024 in]
Row-to-Row Spacing	2.54 mm[.1 in]

Usage Conditions

Operating Temperature (Max)	70 °C, 75 °C, 80 °C, 85 °C, 90 °C, 100 °C [158 °F][167 °F][176 °F][185 °F][194 °F][212 °F]
Operating Temperature Range	-40 - 120 °C[-40 - 248 °F]

Operation/Application

Circuit Application	Signal
---------------------	--------

Industry Standards

Degree of Protection	IP67
UL Flammability Rating	UL 94HB

Packaging Features

Packaging Method	Box
------------------	-----

Other



Serviceable	Yes
Connector Position Assurance Capable	No

Product Compliance

[For compliance documentation, visit the product page on TE.com>](#)

EU RoHS Directive 2011/65/EU	Compliant
EU ELV Directive 2000/53/EC	Compliant
China RoHS 2 Directive MIIT Order No 32, 2016	No Restricted Materials Above Threshold
EU REACH Regulation (EC) No. 1907/2006	Current ECHA Candidate List: JAN 2024 (240) Candidate List Declared Against: JAN 2024 (240) Does not contain REACH SVHC
Halogen Content	BFR/CFR/PVC Free, but Br/Cl >900 ppm in other sources.
Solder Process Capability	Not reviewed for solder process capability

Product Compliance Disclaimer

This information is provided based on reasonable inquiry of our suppliers and represents our current actual knowledge based on the information they provided. This information is subject to change. The part numbers that TE has identified as EU RoHS compliant have a maximum concentration of 0.1% by weight in homogenous materials for lead, hexavalent chromium, mercury, PBB, PBDE, DBP, BBP, DEHP, DIBP, and 0.01% for cadmium, or qualify for an exemption to these limits as defined in the Annexes of Directive 2011/65/EU (RoHS2). Finished electrical and electronic equipment products will be CE marked as required by Directive 2011/65/EU. Components may not be CE marked. Additionally, the part numbers that TE has identified as EU ELV compliant have a maximum concentration of 0.1% by weight in homogenous materials for lead, hexavalent chromium, and mercury, and 0.01% for cadmium, or qualify for an exemption to these limits as defined in the Annexes of Directive 2000/53/EC (ELV). Regarding the REACH Regulation, the information TE provides on SVHC in articles for this part number is based on the latest European Chemicals Agency (ECHA) 'Guidance on requirements for substances in articles' posted at this URL: <https://echa.europa.eu/guidance-documents/guidance-on-reach>

Compatible Parts

TE Part # CAT-NC1-NMA12
NextGen & NextGen Plus MCON 1.2 Locking Lance Single Wire Seals and Cavity Plugs

TE Part # 967439-1
4pos MQS .63 header 180deg

TE Part # CAT-M8793-T273
MQS, RECEPTACLE AND TAB

TE Part # 1379795-1
MQS PROTECTIVE COVER 4POS

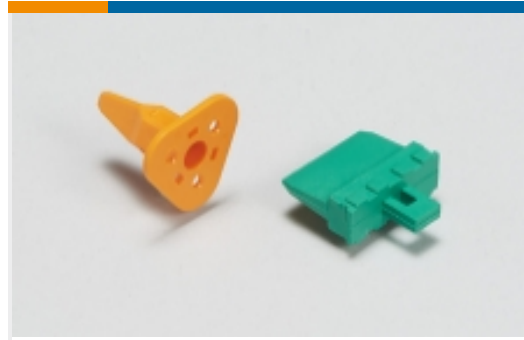


TE Part # 1379796-1
MQS SOCKET HOUSING 4 POS

Also in the Series | MQS



Automotive Connector Caps & Covers (87)



Automotive Connector Locks & Position Assurance(22)



Automotive Housings(298)



Automotive Terminals(78)



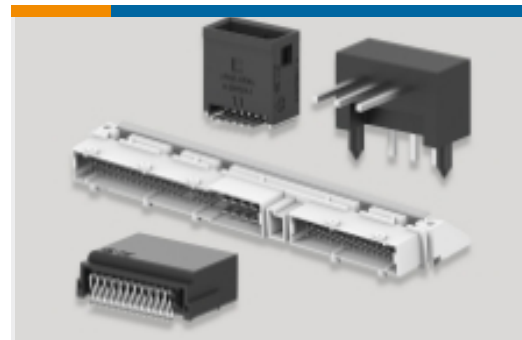
Connector Seals & Cavity Plugs(23)



Insertion & Extraction Tools(42)

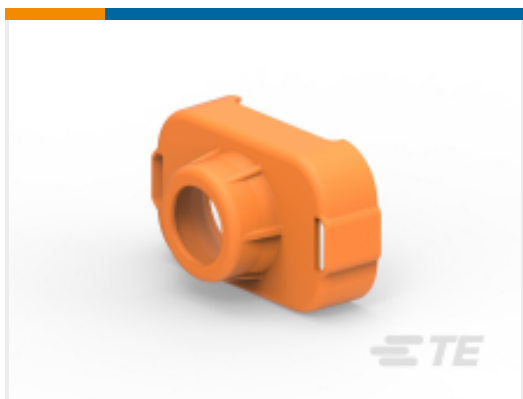


Other Automotive Connector Accessories(4)



PCB Headers & Receptacles(140)

Customers Also Bought



TE Part # 2141614-5
COVER, CABLE SEAL



TE Part # 2287978-1
2POS, MCON 2.8, REC HSG, SHTD HVIL1.2, ASSY



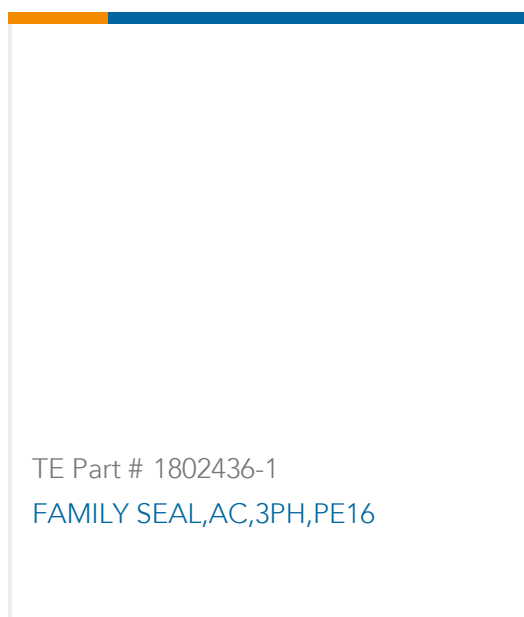
TE Part # 2316424-1
COVER, CABLE SEAL, AC



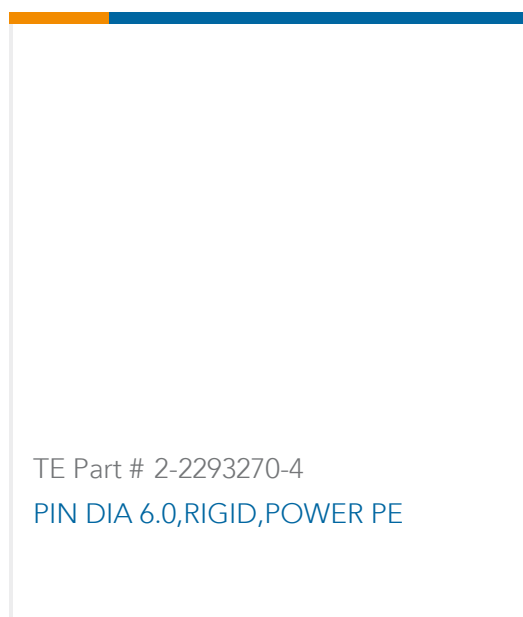
TE Part # 2319938-4
STRAIN RELIEF, CABLE



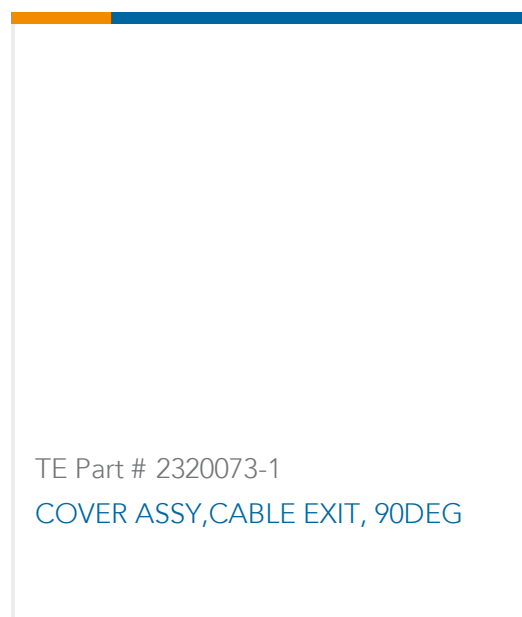
TE Part # 1-1241473-4
KUNSTSTOFFSCHRAUBE



TE Part # 1802436-1
FAMILY SEAL, AC, 3PH, PE16



TE Part # 2-2293270-4
PIN DIA 6.0, RIGID, POWER PE



TE Part # 2320073-1
COVER ASSY, CABLE EXIT, 90DEG



Documents

Product Drawings

[4POS MQS REC SEALED COD A](#)

English

CAD Files

Customer View Model

[ENG_CVM_CVM_1379799-1_A.2d_dxf.zip](#)

English

[3D PDF](#)

3D

Customer View Model

[ENG_CVM_CVM_1379799-1_A.3d_igs.zip](#)

English

Customer View Model

[ENG_CVM_CVM_1379799-1_A.3d_stp.zip](#)

English

By downloading the CAD file I accept and agree to the [Terms and Conditions](#) of use.

Datasheets & Catalog Pages

[Micro Quadlok Interconnection System \(MQS\)](#)

English

Product Specifications

[Product Specification](#)

French

Instruction Sheets

[Instruction Sheet \(non U.S.\)](#)

English