

【1. 適用範囲 SCOPE】

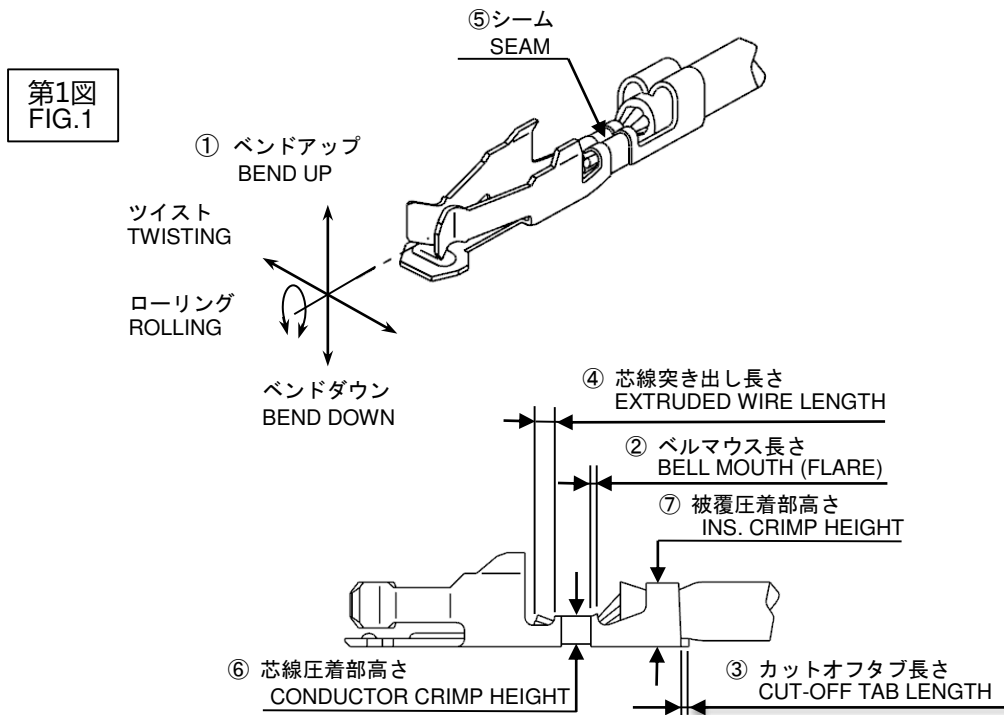
本仕様書は、_____殿 に納入する

2.0mm PITCH GRID WIRE TO BOARD CONN. CRIMP TERM の圧着に伴う諸元について規定する。

THIS STANDARD SPECIFIES THE DIMENSIONS AFTER CRIMPING OF THE 2.0mm PITCH GRID WIRE TO BOARD CONNECTOR TERMINAL.

【2. 適用端子／電線 APPLICABLE TERMINAL／WIRE】

端子型番 Part Number	適用電線 WIRE SIZE		絶縁被覆外径 INSULATION DIAMETER
	AWG	mm ²	
50394-8*** 撚り線 (STRAND WIRE)	#24~#30	0.049~0.22	φ0.8 - φ1.4 mm

【3. 各部の名称 DEFINITION】


REV.	A			
SHEET	1-4			
REVISE ON PC ONLY		TITLE:		
A	新規作成 RELEASED 177772 06/06/2018 GSHARMA	2.0mm GRID WIRE TO BOARD CONN. CRIMP TERMINAL		
	THIS DOCUMENT CONTAINS INFORMATION THAT IS PROPRIETARY TO MOLEX ELECTRONIC TECHNOLOGIES, LLC AND SHOULD NOT BE USED WITHOUT WRITTEN PERMISSION			圧着仕様書
REV.	DESCRIPTION			
DESIGN CONTROL J	STATUS	WRITTEN BY: M.YAGI	CHECKED BY: Y.ITO	APPROVED BY: H.IKESUGI
				DATE: 1993/06/09
DOCUMENT NUMBER CS-50394		DOC. TYPE PSD	DOC. PART 001	CUSTOMER GENERAL MARKET
				SHEET 1 OF 4

【4. 仕様 SPECIFICATION】

番号 NUMBER	項目 ITEM	仕様 REQUIREMENT
①	バンドアップ BEND UP	4°以下 / MAX.
	バンドダウン BEND DOWN	3°以下 / MAX.
	ツイスト TWISTING	3°以下 / MAX.
	ローリング ROLLING	4°以下 / MAX.
②	ベルマウス (参考値) BELL MOUTH (REF.)	0.05 ~ 0.35 mm
③	カットオフタブ長さ CUT OFF TAB LENGTH	0 ~ 0.15 mm以下 / MAX.
④	芯線突き出し長さ EXTRUDED WIRE LENGTH	0 ~ 0.5 mm
⑤	シーム SEAM	シームは閉じていること。但し開きのある場合は芯線の飛び出しなきこと。 SEAM SHALL NOT BE OPENED AND NOT WIRE ALLOWED OUT OF CRIMPING THE AREA.
≠	絶縁被覆むき長さ (参考値) WIRE STRIP LENGTH (REF.)	1.3 ~ 1.8 mm

【5. 圧着条件 (⑥及び⑦) CONDITIONS】

電線(UL1007相当品)を圧着した際の要件は下記による。

AFTER CRIMPING THE STRAND WIRE (EQUIVALENT TO UL1007), THE CRIMPED AREAS SHOULD BE AS FOLLOWS.

ターミナル 番号 TERMINAL NO.	電線サイズ WIRE SIZE (AWG)	圧着 ツール番号 CRIMP DIE MODEL NO.	⑥芯線圧着部高さ CONDUCTOR CRIMP HEIGHT		⑦被覆圧着部 INSULATION		圧着部引張強度 CRIMP STRENGTH (N {Kgf})
			工具 マーク TOOL MARK	高さ HEIGHT (mm)	工具 マーク TOOL MARK	参考高さ HEIGHT (REF.) (mm)	
50394 -8***	#24 (*1)	57315 -3000	C	0.60 ~0.65	6	1.35	29.4{3.0}以上 / MIN.
	#26		C	0.59 ~0.64	6	1.35	19.6{2.0}以上 / MIN.
	#28		B	0.56 ~0.61	6	1.30	9.8{1.0}以上 / MIN.
	#30		A	0.53 ~0.58	5	1.30	4.9{0.5}以上 / MIN.

注) *1 UL1061相当品を圧着した際の条件

NOTE. AFTER CRIMPING WIRE (EQUIVALENT TO UL1061), THE CRIMPED AREA SHOULD BE AS FOLLOWS.

REVISE ON PC ONLY		TITLE:			
A	SEE SHEET 1 OF 4	1.25 W/B CONN. RECEPTACLE CRIMP TERMINAL 圧着仕様書			
	REV.	DESCRIPTION	THIS DOCUMENT CONTAINS INFORMATION THAT IS PROPRIETARY TO MOLEX ELECTRONIC TECHNOLOGIES, LLC AND SHOULD NOT BE USED WITHOUT WRITTEN PERMISSION		
DOCUMENT NUMBER CS-50394		DOC. TYPE PSD	DOC. PART 001	CUSTOMER GENERAL MARKET	SHEET 2 OF 4

【6. 消耗部品一覧表 PERISHABLE PARTS LIST】

部品名称 PART NAME	部品番号 PART NO.
アンビル ANVIL	57175-2101
芯線クリンプパンチ COND. PUNCH	57175-2102
被覆クリンプパンチ INS. PUNCH	57175-2103
フロントフローティングシェア FRONT FLOATING SHEAR	57067-2006
フロントホルダー FRONT HOLDER	57067-2005

REVISE ON PC ONLY

A

SEE SHEET 1 OF 4

TITLE:

1.25 W/B CONN.
RECEPTACLE CRIMP TERMINAL

圧着仕様書

THIS DOCUMENT CONTAINS INFORMATION THAT IS PROPRIETARY TO MOLEX ELECTRONIC TECHNOLOGIES, LLC AND SHOULD NOT BE USED WITHOUT WRITTEN PERMISSION

REV.

DESCRIPTION

DOCUMENT NUMBER
CS-50394

DOC. TYPE
PSD

DOC. PART
001

CUSTOMER
GENERAL MARKET

SHEET
3 OF 4

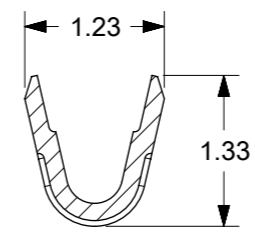
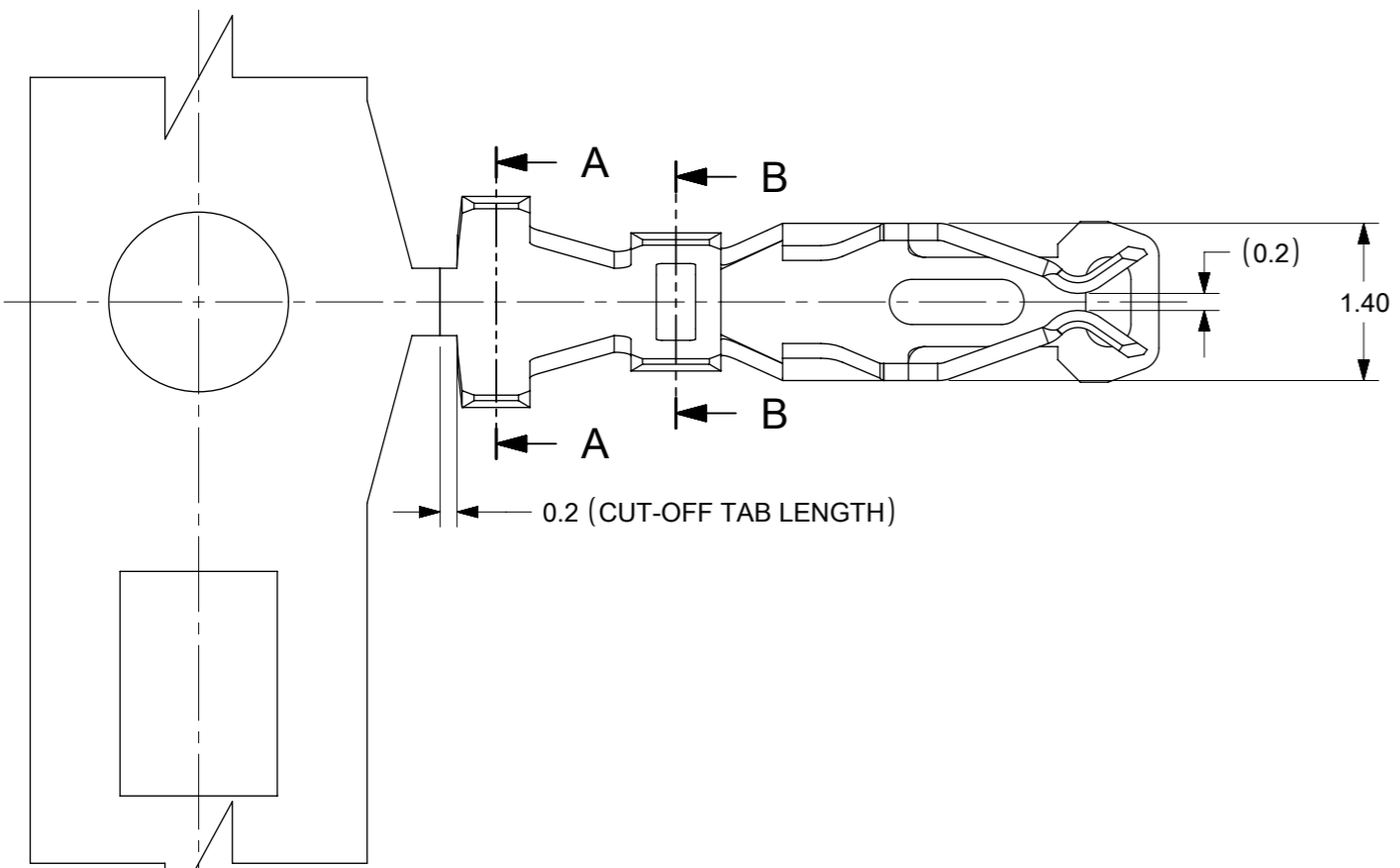
molex CRIMP SPECIFICATION

LANGUAGE

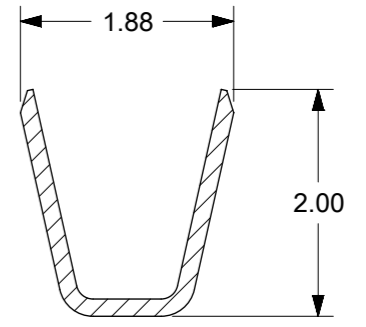
JAPANESE
ENGLISH

REV.	REV. RECORD	DATE	EC NO.	WRITTEN BY :	CHECKED BY :
0	RELEASED	09/06/93	T30267	M.YAGI	--
D	REDRAWN & RELEASED	06/06/18	177772	G.SHARMA	A.TEZUKA

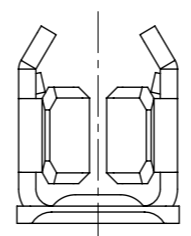
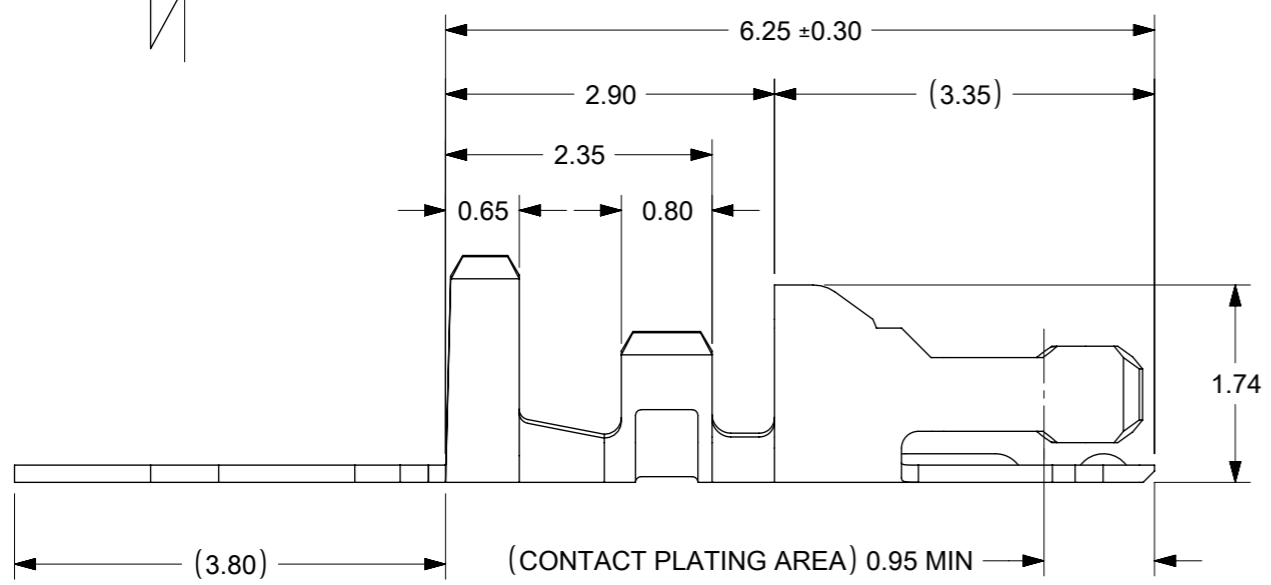
REVISE ON PC ONLY		TITLE:			
A	SEE SHEET 1 OF 4	1.25 W/B CONN. RECEPTACLE CRIMP TERMINAL 圧着仕様書			
	REV.	DESCRIPTION	<small>THIS DOCUMENT CONTAINS INFORMATION THAT IS PROPRIETARY TO MOLEX ELECTRONIC TECHNOLOGIES, LLC AND SHOULD NOT BE USED WITHOUT WRITTEN PERMISSION</small>		
DOCUMENT NUMBER CS-50394		DOC. TYPE PSD	DOC. PART 001	CUSTOMER GENERAL MARKET	SHEET 4 OF 4



SECTION B-B

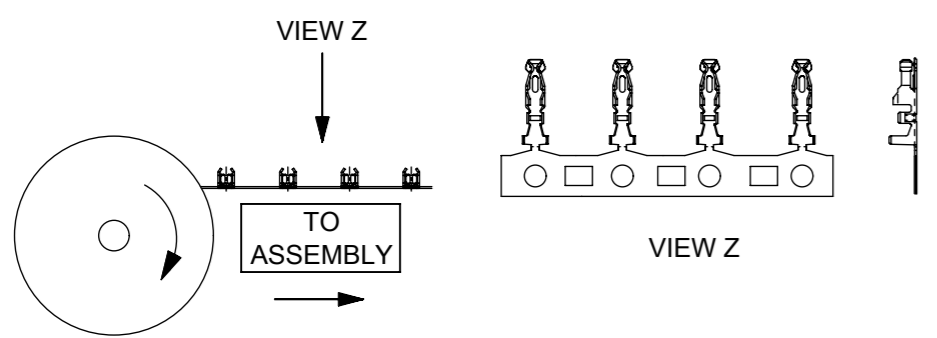


SECTION A-A



- NOTES :
1. MATERIAL: COPPER ALLOY
 2. APPLICABLE HOUSING : 51110-***1
: 51110-**5*
: 151100-00**
 3. APPLICABLE WIRE: AWG #24-#30
WIRE INSULATION OD: 1.40mm MAX.
 4. CRIMPING SPECIFICATION: CS-50394

WINDING DIRECTION



ENG. P/NS		CONTACT PLATING (NICKEL OVERALL 2-6 μm MIN)
FORM : LOOSE	FORM : CHAIN	
50394-8100	50394-8051	0.38μm GOLD MIN.
50394-8200	50394-8052	0.76μm GOLD MIN.
50394-8400	50394-8054	GOLD FLASH 0.05 - 0.125μm
50394-8500	50394-8055	2.50μm MATTE TIN MIN.

THIS DRAWING CONTAINS INFORMATION THAT IS PROPRIETARY TO MOLEX ELECTRONIC TECHNOLOGIES, LLC AND SHOULD NOT BE USED WITHOUT WRITTEN PERMISSION									
QUALITY SYMBOLS	EC NO: 662246 DRWN: ABABUPS CHKD: MIRAMAKRISHNA REV APPR: MIRAMAKRISHNA	GENERAL TOLERANCES (UNLESS SPECIFIED)		DIMENSION UNITS	SCALE				
		MM	INCH	MM	NTS				
▽ = 0	2021/04/28 2021/04/28 2021/04/28	4 PLACES ± ±		DRWN BY	DATE	SALES DRAWING 2.0MM GRID W TO B CONN. CRIMP TERMINAL			
▽ = 0		3 PLACES ± ±		S.Q	1994/04/20				
▽ = 0		2 PLACES ± 0.2 ±		CHK'D BY	DATE	PRODUCT CUSTOMER DRAWING			
▼ = 0		1 PLACES ± ±		EDPOH	1994/04/27				
▽ = 0		0 PLACES ± ±		APPR BY	DATE	SERIES: 50394 MATERIAL NUMBER: SEE TABLE CUSTOMER: GENERAL MARKET			
⊠ = 0		ANGULAR TOL = 3.0		LBLEE	2013/11/13				
■ = 0	DRAFT WHERE APPLICABLE MUST REMAIN WITHIN DIMENSIONS		DRAWING SIZE	THIRD ANGLE PROJECTION	DOCUMENT NUMBER: SD-50394-8XXX DOC TYPE: PSD DOC PART: 000 SHEET NUMBER: 1 OF 1				
▽ = 0	C2			A3					

RELEASE STATUS	RELEASE DATE
----------------	--------------