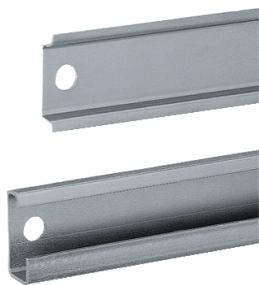


Product data sheet

Specifications



One symmetric mounting rail 35x15 L800mm type A Supply: 20

NSYSDR80A

Main

Anwendung	Multi-purpose
Range	PanelSeT
Product Or Component Type	Rail
Accessory / Separate Part Categor	Mounting accessory
Type Of Rail	Symmetrical DIN
Enclosure Nominal Dimensions	-
Range Compatibility	PanelSeT PanelSeT SF PanelSeT PanelSeT SM PanelSeT PanelSeT SFX PanelSeT PanelSeT SMX PanelSeT PanelSeT SD
Device Composition	fixing elements 1 rail
Quantity Per Set	Set of 20

Complementary

Material	Zinc coated steel
Surface Finish	Zinc coated
Fixing Mode	By fixing element - structure of enclosure location
Adjustment	Pitch 25 mm Continuous adjustment
Length	Nominal: 800 mm Real: 750 mm
Height	Nominal: 15 mm
Width	Nominal: 35 mm
Thickness	1.5 mm

Packing Units

Unit Type Of Package 1	PCE
Number Of Units In Package 1	1
Package 1 Height	1.5 cm
Package 1 Width	3.5 cm
Package 1 Length	74.5 cm
Package 1 Weight	426.0 g

Disclaimer: This documentation is not intended as a substitute for and is not to be used for determining suitability or reliability of these products for specific user applications

Contractual warranty

Warranty	18 months
----------	-----------

Sustainability

Green Premium™ label is Schneider Electric's commitment to delivering products with best-in-class environmental performance. Green Premium promises compliance with the latest regulations, transparency on environmental impacts, as well as circular and low-CO₂ products.

Guide to assessing product sustainability is a white paper that clarifies global eco-label standards and how to interpret environmental declarations.

[Learn more about Green Premium >](#)

[Guide to assess a product's sustainability >](#)



Transparency RoHS/REACH

Well-being performance

✓ Reach Free Of Svhc

✓ Toxic Heavy Metal Free

✓ Mercury Free

✓ Rohs Exemption Information Yes

Certifications & Standards

Reach Regulation	REACH Declaration
Eu Rohs Directive	Pro-active compliance (Product out of EU RoHS legal scope) EU RoHS Declaration
China Rohs Regulation	China RoHS declaration Pro-active China RoHS declaration (out of China RoHS legal scope)
Environmental Disclosure	Product Environmental Profile
Circularity Profile	No need of specific recycling operations