

63823-1 ✓ ACTIVE

FASTON | FASTON 187

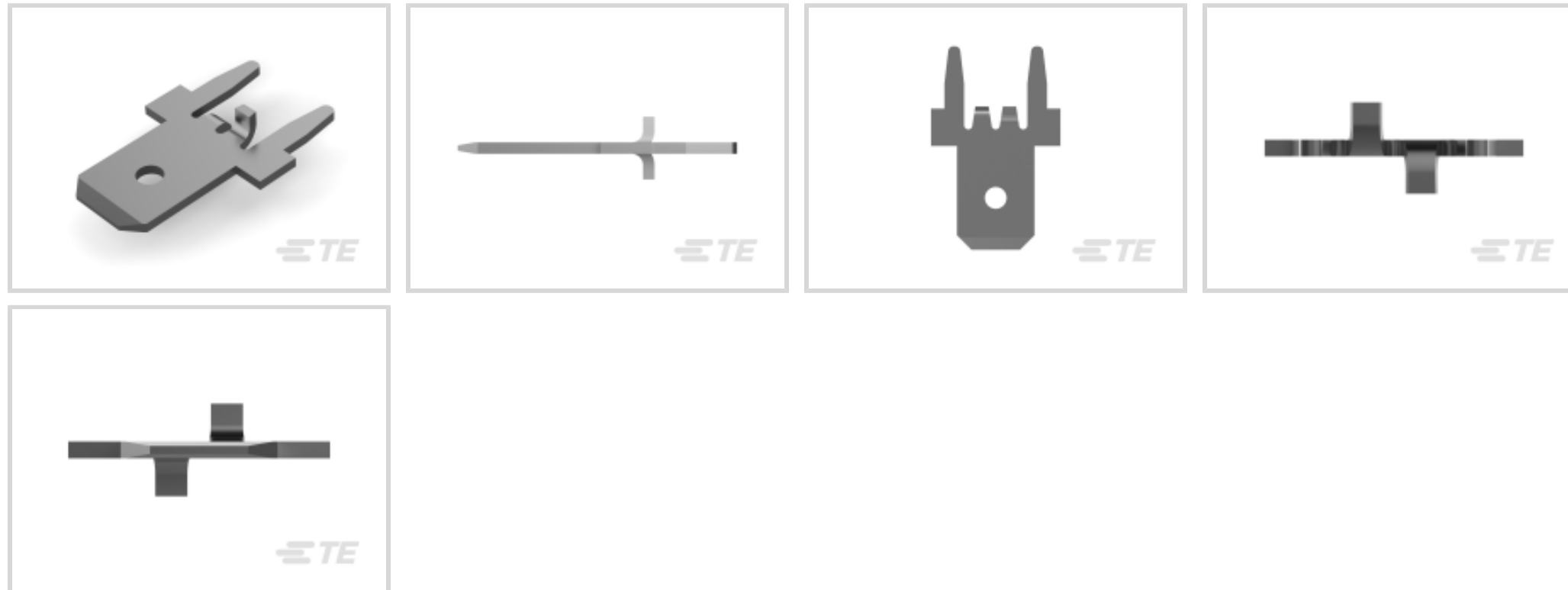
TE Internal #: 63823-1

PCB Terminals, Tab, Mating Tab Width .187 in [4.75 mm], PCB Hole Diameter 1.32 mm [.052 in], Through Hole - Solder, Tin Plating, Brass, FASTON 187

[View on TE.com >](#)



Terminals & Splices > PCB Terminals



PCB Terminal Type: **Tab**

PCB Thickness (Recommended): 1.57 mm [.062 in]

Mating Tab Width: 4.75 mm [.187 in]

Mating Tab Thickness: .51 mm [.02 in]

PCB Hole Diameter: 1.32 mm [.052 in]

Features

Contact Features

PCB Contact Termination Area Plating Material Thickness	3.81 μ m[150 μ in]
Contact Underplating Material Thickness	1.27 μ m, 2.54 μ m[50 μ in][100 μ in]
Contact Mating Area Plating Material Thickness	3.81 μ m[150 μ in]
PCB Terminal Type	Tab
Mating Tab Width	4.75 mm[.187 in]
Mating Tab Thickness	.51 mm[.02 in]
Terminal Plating Material	Tin
Contact Underplating Material	Brass
Terminal Size	4.75
Terminal Orientation	Straight

Termination Features

Termination Method to Printed Circuit Board	Through Hole - Solder
Product Terminates To	Printed Circuit Board

Mechanical Attachment



Wire Insulation Support	With
-------------------------	------

Dimensions

Extension Below Board	3.81 mm[.15 in]
Terminal Material Thickness	.51 mm[.02 in]
PCB Thickness (Recommended)	1.57 mm[.062 in]
PCB Hole Diameter	1.32 mm[.052 in]
Profile Height from PCB	8.63 mm[.344 in]

Usage Conditions

Insulation Option	Uninsulated
Operating Temperature Range	-30 - 110 °C[-22 - 230 °F]

Packaging Features

Packaging Quantity	16000
Packaging Method	Reel

Product Compliance

[For compliance documentation, visit the product page on TE.com>](#)

EU RoHS Directive 2011/65/EU	Compliant
EU ELV Directive 2000/53/EC	Compliant
China RoHS 2 Directive MIIT Order No 32, 2016	No Restricted Materials Above Threshold
EU REACH Regulation (EC) No. 1907/2006	Current ECHA Candidate List: JAN 2024 (240) Candidate List Declared Against: JAN 2024 (240) Does not contain REACH SVHC
Halogen Content	Low Halogen - Br, Cl, F, I < 900 ppm per homogenous material. Also BFR/CFR/PVC Free
Solder Process Capability	Wave solder capable to 265°C

Product Compliance Disclaimer

This information is provided based on reasonable inquiry of our suppliers and represents our current actual knowledge based on the information they provided. This information is subject to change. The part numbers that TE has identified as EU RoHS compliant have a maximum concentration of 0.1% by weight in homogenous materials for lead, hexavalent chromium, mercury, PBB, PBDE, DBP, BBP, DEHP, DIBP, and 0.01% for cadmium, or qualify for an exemption to these limits as defined in the Annexes of Directive 2011/65/EU (RoHS2). Finished electrical and electronic equipment products will be CE marked as required by Directive 2011/65/EU. Components may not be CE marked. Additionally, the part numbers that TE has identified as EU ELV compliant have a maximum concentration of 0.1% by weight in homogenous materials for lead, hexavalent chromium, and mercury, and 0.01% for cadmium, or qualify for an exemption to these limits as defined in the Annexes of Directive 2000/53/EC (ELV). Regarding the REACH Regulation, the information TE provides on SVHC in articles for this part number is based on the latest European Chemicals Agency (ECHA) 'Guidance on

requirements for substances in articles' posted at this URL: <https://echa.europa.eu/guidance-documents/guidance-on-reach>

Compatible Parts

 <p>TE Part # 62395-1 110 FASTON TAB TPBR</p>	 <p>TE Part # 62221-1 187 FASTON TAB TPBR</p>	 <p>TE Part # 1217133-1 187 FASTON,PCB TAB,TNBR</p>	 <p>TE Part # 63756-1 110 FASTON TAB TPBR</p>
 <p>TE Part # 61968-1 110 FASTON TAB TPBR</p>	 <p>TE Part # 63603-1 187 FASTON TAB TPBR</p>	 <p>TE Part # 1217062-1 187 FASTON,FLAG,PCB TAB,TNBR</p>	 <p>TE Part # 1742361-1 187 FASTON,PCB TAB,TPBR</p>
 <p>TE Part # 1742428-1 110 FASTON,TAB,PCB,TPBR</p>	 <p>TE Part # CAT-P100 Pin Insertion Machine P100</p>	 <p>TE Part # CAT-P280 P280 PIN INSERTION MACHINE</p>	 <p>TE Part # CAT-P300 Pin Insertion Machine P300</p>
 <p>TE Part # CAT-P360 P360 Pin Insertion Machine</p>	 <p>TE Part # CAT-P550 Pin Insertion Machine P550</p>	 <p>TE Part # 63838-1 187 FASTON TAB TPBR</p>	 <p>TE Part # 2410420-3 EP PIN INSERTION MACHINE</p>

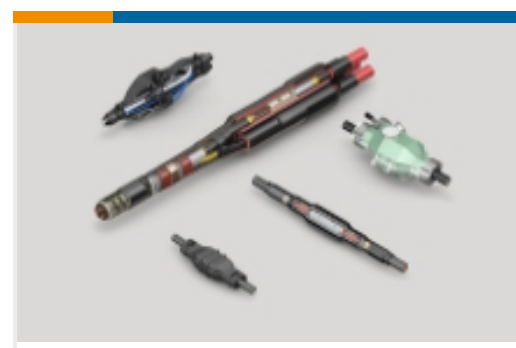
Also in the Series | **FASTON 187**



Crimp Terminal Housings(41)



Insertion & Extraction Tools(1)



Joints & Splices(1)



PCB Terminals(42)

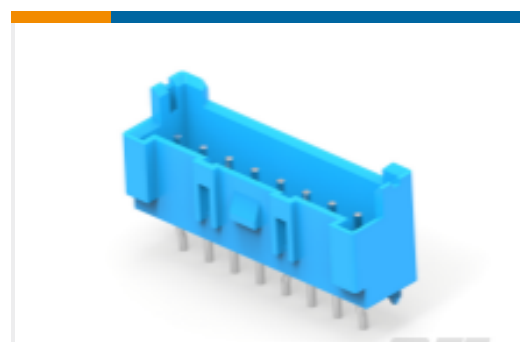
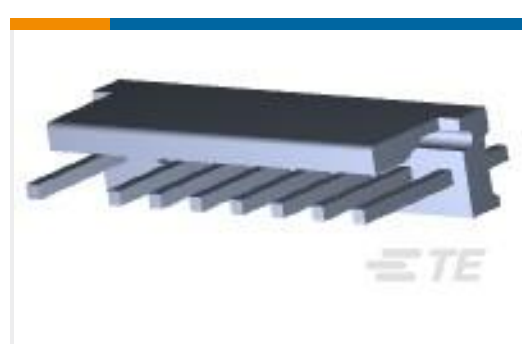
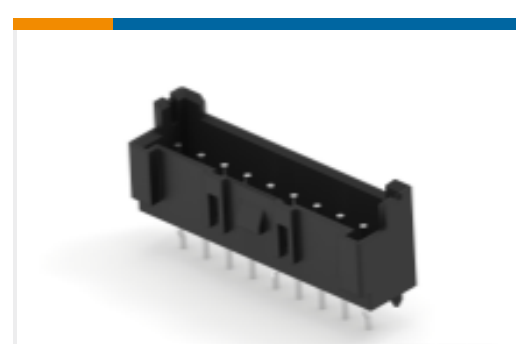


Quick Disconnects(208)



Splices(1)

Customers Also Bought

TE Part # 3-794679-4
04P MICRO MNL ASSY,R/A,THRU,LFTE Part # 2-2338245-8
EP2.5 HDR 8P VERT BOSS,BLUE,ULTE Part # 2365497-6
EP2.5 single row SMT header,GWT,6PTE Part # 4-178841-2
AMP U/P SGL ROW HDR ASSY V 6PTE Part # 641936-6
09P MTA156 HDR ASSY F/L W/O#8TE Part # 3-644617-5
05P MTA156 HDR ASY PO RA FB LFTE Part # 4-2338245-9
EP2.5 HDR 9P VERT BOSS,BLACK,UL

Documents

Product Drawings

187 FASTON TAB TPBR

English

CAD Files

3D PDF

3D

Customer View Model

ENG_CVM_CVM_63823-1_AB_c-63823-1-ab.2d_dxf.zip



English

Customer View Model

[ENG_CVM_CVM_63823-1_AB_c-63823-1-ab.3d_igs.zip](#)

English

Customer View Model

[ENG_CVM_CVM_63823-1_AB_c-63823-1-ab.3d_stp.zip](#)

English

By downloading the CAD file I accept and agree to the [Terms and Conditions](#) of use.

Datasheets & Catalog Pages

[FASTON PCB Tabs and Receptacles](#)

English

Product Specifications

[FASTON* 110, 187, 205, 250, and 312 Series Tab Contacts for Printed Circuit \(PC\) Board Applications](#)

English

Product Specification

English

Agency Approvals

[CSA Certificate](#)

English

[CSA Certificate](#)

English