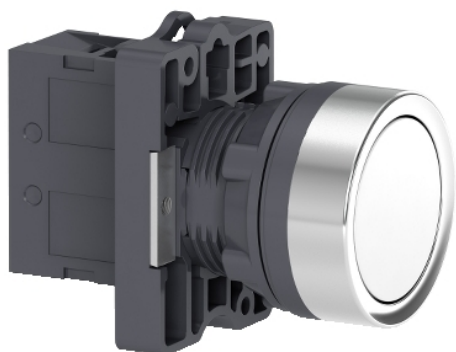


XA2EA11

Complete push button, Easy Harmony XA2, plastic, flush, white, 22mm, spring return, unmarked, 1NO



Main

Range of Product	Easy Harmony XA2
Product or Component Type	Complete push-button
Device short name	XA2
Bezel material	Plastic
Fixing collar material	Plastic

Complementary

Mounting diamete	0.89 in (22.5 mm)
Sale per indivisible quantity	1
Protective treatment	TC
Operating position	Any position
Fixing center	$\geq 30 \times 40$ mm panel) 0.04...0.20 in (1...5 mm)
Fixing mode	Fixing nut 17.70...21.24 lbf.in (2...2.4 N.m)
Shape of signaling unit head	Round
Type of operator	Spring return
Operator profile	White flush
Contacts type and composition	1 NO
Contact operation	Slow-break
Mechanical durability	1500000 cycles
Connections - terminals	Screw clamp terminal, $\leq 2 \times 1.5$ mm ² Screw clamp terminal, $\leq 1 \times 2.5$ mm ² Screw clamp terminal, $\geq 1 \times 0.5$ mm ² Faston terminals 6.3 mm
Tightening torque	7.08 lbf.in (0.8 N.m)
Short-circuit protection	10 A gL fuse IEC 60269-1
[Ith] conventional free air thermal current	10 A
[Ui] rated insulation voltage	600 VIEC 60947-1
[Uimp] rated impulse withstand voltage	6 kV IEC 60947-1
[Ie] rated operational current	3 A 240 V, AC-15, A600 0.27 A 250 V, DC-13, Q600
Electrical durability	500000 Cycles, AC-15, 3 A 230 V 60 cyc/mn 0.5 IEC 60947-5-4 500000 cycles, DC-13, 0.2 A 110 V 60 cyc/mn 0.5
Electrical reliability	$\Lambda < 10\exp(-8)$ 24 V
Width	1.18 in (30 mm)
Height	1.65 in (42 mm)
Depth	2.15 in (54.7 mm)
Net Weight	0.07 lb(US) (0.032 kg)
Cap/operator or lens colour	White
Type of operator	Spring return

Environment

Ambient Air Temperature for Storage	-40...158 °F (-40...70 °C)
Ambient air temperature for operation	-13...131 °F (-25...55 °C)
Overvoltage category	Class I IEC 536
IP degree of protection	IP65 IEC 60529
IK degree of protection	IK03 IEC 60529
Standards	IEC 60947-5-1 IEC 60947-1 GB 14048.5 GB 14048.1
Product Certifications	CCC[RETURN]CE
Vibration resistance	10 gn 40...500 Hz)IEC 60068-2-6
Shock resistance	70 gn 11 ms) half sine wave acceleration IEC 60068-2-27





Ordering and shipping details

Category	US1CP4B22152
Discount Schedule	CP4B
GTIN	3606480673573
Returnability	No
Country of origin	CN

Packing Units

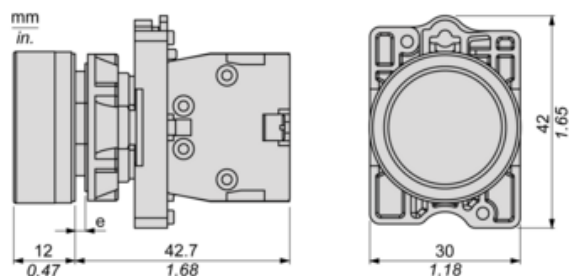
Unit Type of Package 1	PCE
Number of Units in Package 1	1
Package 1 Height	1.38 in (3.5 cm)
Package 1 Width	1.57 in (4.0 cm)
Package 1 Length	2.36 in (6.0 cm)
Package 1 Weight	1.16 oz (33.0 g)
Unit Type of Package 2	S02
Number of Units in Package 2	100
Package 2 Height	5.91 in (15.0 cm)
Package 2 Width	11.81 in (30.0 cm)
Package 2 Length	15.75 in (40.0 cm)
Package 2 Weight	7.80 lb(US) (3.537 kg)
Unit Type of Package 3	P06
Number of Units in Package 3	1600
Package 3 Height	29.53 in (75.0 cm)
Package 3 Width	31.50 in (80.0 cm)
Package 3 Length	23.62 in (60.0 cm)
Package 3 Weight	142.40 lb(US) (64.592 kg)

Offer Sustainability

Sustainable offer status	Green Premium product
California proposition 65	WARNING: This product can expose you to chemicals including: Lead and lead compounds, which is known to the State of California to cause cancer and birth defects or other reproductive harm. For more information go to www.P65Warnings.ca.gov
REACH Regulation	 REACH Declaration
REACH free of SVHC	Yes
EU RoHS Directive	Pro-active compliance (Product out of EU RoHS legal scope)  EU RoHS Declaration
Mercury free	Yes
China RoHS Regulation	 China RoHS Declaration
RoHS exemption information	 Yes

Environmental Disclosure	Product Environmental Profile
Circularity Profile	End Of Life Information
WEEE	The product must be disposed on European Union markets following specific waste collection and never end up in rubbish bins.

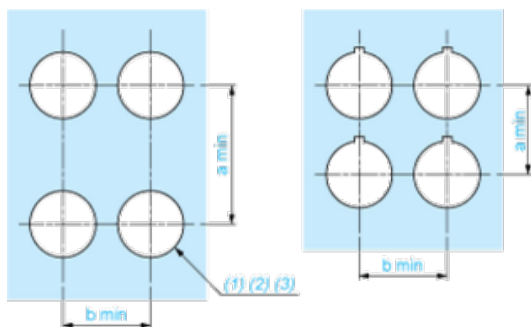
Dimensions



(e) Clamping thickness: 1 to 6 mm / 0.04 to 0.24 in.

Panel Cut-out for Pushbuttons, Switches and Pilot Lights (Finished Holes, Ready for Installation)

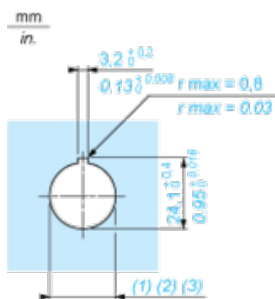
Connection by Screw Clamp Terminals



- (1) Diameter on finished panel or support
(2) For selector switches and Emergency stop buttons, use of an anti-rotation plate type ZB5AZ902 is recommended.
(3) Ø22.5 mm recommended ($\text{Ø}22.3_0^{+0.4}$) / Ø0.89 in. recommended ($\text{Ø}0.88 \text{ in.}_0^{+0.016}$)

Connections	a in mm	a in in.	b in mm	b in in.
By screw clamp terminals connector	40	1.57	30	1.18
By Faston connectors	45	1.77	32	1.26

Detail of Lug Recess



- (1) Diameter on finished panel or support
(2) For selector switches and Emergency stop buttons, use of an anti-rotation plate type ZB5AZ902 is recommended.
(3) Ø22.5 mm recommended ($\text{Ø}22.3_0^{+0.4}$) / Ø0.89 in. recommended ($\text{Ø}0.88 \text{ in.}_0^{+0.016}$)