



Socket Modules and Socket Cards

Programming the Future with the Highest Yield at the Highest Speeds

BPM Sockets

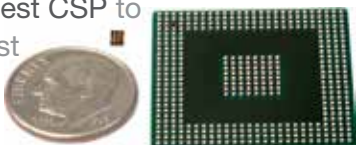
Socket modules and socket cards are the electro-mechanical interface between the programmable semiconductor device and the programmer. The robust design is ideal for manufacturing and design environments where high signal integrity and reliable performance are critical.

The sophisticated technology of BPM Microsystems' active circuitry delivers the cleanest waveform signals to the device by eliminating noise, ground bounce, and overshoot, which allows for the most reliable vector testing available to ensure the highest quality and overall yield.

BPM Microsystems offers a substantial number of socket modules and socket cards to support thousands of devices from over 210 semiconductor manufacturers. New socket module and socket card designs are continuously added and can be developed quickly to meet your programming needs.

Our socket modules and socket cards provide you with the best combination of programming quality and cost of ownership. Unlike our competitors, you can order as many socket solutions as you need— even if it's only one! Contact us with regards to your specific needs.

Sockets for devices ranging from the smallest CSP to the largest QFP



High Insertion Count Sockets

- Also known as long-life sockets, HICs are designed for customers with high volume production requirements
- Rated from 200,000 to 300,000 insertions
- Pogo pins can be replaced to extend the life of the socket
- Ensure productivity, long-term reliability, and very low operating cost per insertion



Compatible Programmers:
9th Gen, 8th Gen, 7th Gen, 6th Gen

Socket Cards

- Socket cards offer the shortest return on investment on a cost-per-device basis
- Reduce the programming cost per device
- Support high-density NAND Flash, NOR Flash, Serial Flash, MCU's, E/EPROM and more



Compatible Programmers:
9th Gen, 8th Gen

Replacement Daughter Cards

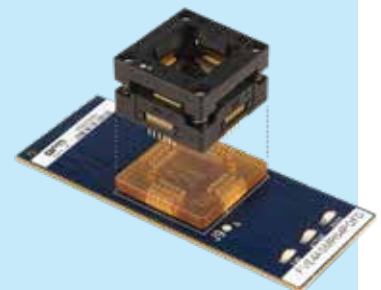
- Get the most out of your socket module with our individual replacement socket daughter cards
- Unlike our competitors' "gang" cards, you can optimize the number of socket daughter cards needed and replace them individually
- Fault-tolerant design increases manufacturing up-time and saves replacement costs 75%



Compatible Programmers:
9th Gen, 7th Gen, 6th Gen

Receptacle-Base

- Receptacle-base socket modules and socket cards include a interface between the printed circuit board and the socket
- Replace only the individual consumable socket once it reaches its useful life
- Extend the life of the socket module and socket card, producing higher yields and lowering programming cost per device



Compatible Programmers:
9th Gen, 8th Gen, 7th Gen, 6th Gen