

MS580330BA01-00 ✓ ACTIVE

MEAS | MEAS MS5803

TE Internal #: MS580330BA01-00

Digital Pressure and Altimeter Sensor Modules, Absolute, 24 bit ADC, ± 400 mbar Pressure Accuracy, Supply Voltage Range 1.8 – 3.6 V, MEAS MS5803

[View on TE.com >](#)



Sensors > Pressure Sensors > Board Mount Pressure Sensors



Pressure Sensor Type: **Digital Pressure and Altimeter Sensor Modules**

Pressure Type: **Absolute**

Output Signal Type: **24 bit ADC**

Pressure Accuracy: **± 400 mbar**

Supply Voltage Range: **1.8 – 3.6 V**

Features

Product Type Features

Sensor Package	Surface Mountable
Pressure Sensor Type	Digital Pressure and Altimeter Sensor Modules
Pressure Type	Absolute

Electrical Characteristics

Supply Voltage Range	1.8 – 3.6 V
----------------------	-------------

Dimensions

Product Width	6.2 mm[.244 in]
Product Length	6.4 mm[.251 in]
Product Height	2.8 mm[.11 in]

Usage Conditions

Operating Temperature Range	-40 – 85 °C[-40 – 185 °F]
-----------------------------	---------------------------

Operation/Application

Resolution	.5
Output Signal Type	24 bit ADC
Pressure Accuracy	± 400 mbar

Other

Sensor Options

No Option

Product Compliance

For compliance documentation, visit the product page on [TE.com](https://www.te.com)>

EU RoHS Directive 2011/65/EU

Compliant

EU ELV Directive 2000/53/EC

Compliant

China RoHS 2 Directive MIIT Order No 32, 2016

No Restricted Materials Above Threshold

EU REACH Regulation (EC) No. 1907/2006

Current ECHA Candidate List: JAN 2024
(240)
Candidate List Declared Against: JAN 2023
(233)
Does not contain REACH SVHC

Halogen Content

Not Yet Reviewed for halogen content

Solder Process Capability

Not reviewed for solder process capability

Product Compliance Disclaimer

This information is provided based on reasonable inquiry of our suppliers and represents our current actual knowledge based on the information they provided. This information is subject to change. The part numbers that TE has identified as EU RoHS compliant have a maximum concentration of 0.1% by weight in homogenous materials for lead, hexavalent chromium, mercury, PBB, PBDE, DBP, BBP, DEHP, DIBP, and 0.01% for cadmium, or qualify for an exemption to these limits as defined in the Annexes of Directive 2011/65/EU (RoHS2). Finished electrical and electronic equipment products will be CE marked as required by Directive 2011/65/EU. Components may not be CE marked. Additionally, the part numbers that TE has identified as EU ELV compliant have a maximum concentration of 0.1% by weight in homogenous materials for lead, hexavalent chromium, and mercury, and 0.01% for cadmium, or qualify for an exemption to these limits as defined in the Annexes of Directive 2000/53/EC (ELV). Regarding the REACH Regulation, the information TE provides on SVHC in articles for this part number is based on the latest European Chemicals Agency (ECHA) 'Guidance on requirements for substances in articles' posted at this URL: <https://echa.europa.eu/guidance-documents/guidance-on-reach>

Compatible Parts



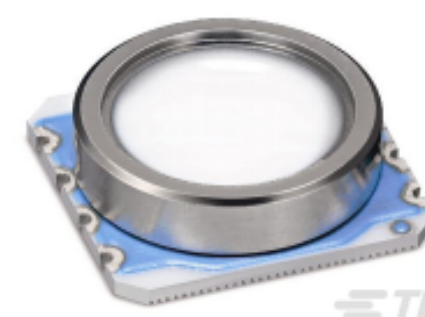
TE Part # MS580314BA01-00
MS5803-14BA01 DIGIT PRESSURE
SENSOR TUBE



TE Part # MS580302BA01-00
MS5803-02BA01 DIGIT PRESSURE
SENSOR TUBE



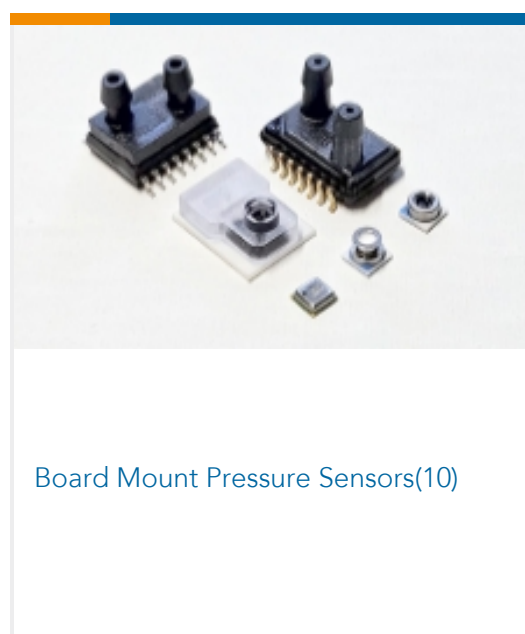
TE Part # MS580305BA01-00
MS5803-05BA 5BAR WHITE GEL TUBE



TE Part # MS580301BA01-00
MS5803-01BA01 PRESSURE SENSOR
TUBE



Also in the Series | MEAS MS5803



Customers Also Bought



Documents

[CAD Files](#)

[3D PDF](#)

[3D](#)

[Customer View Model](#)

[ENG_CVM_CVM_MS580330BA01-00_1.2d_dxf.zip](#)

English



Customer View Model

[ENG_CVM_CVM_MS580330BA01-00_1.3d_igs.zip](#)

English

Customer View Model

[ENG_CVM_CVM_MS580330BA01-00_1.3d_stp.zip](#)

English

By downloading the CAD file I accept and agree to the [Terms and Conditions](#) of use.

Datasheets & Catalog Pages

[Data sheet](#)

English