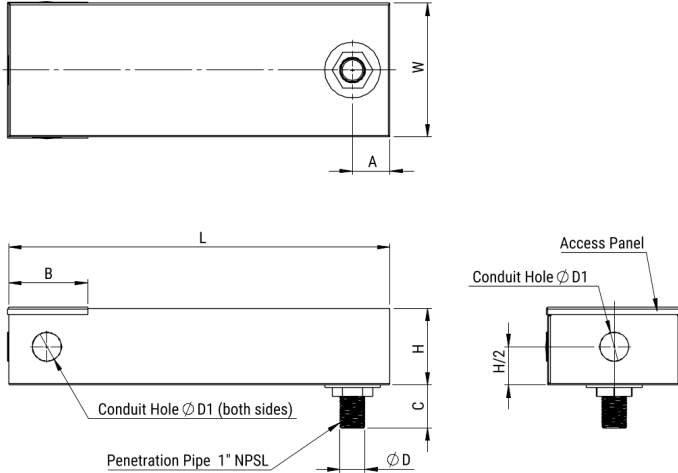


## FLLEU100ASRW1

Aliases (LLEU100ASRW1)

KEMET, FLLE2-SR, EMI/RFI Filters, Noise Suppression, 277 VAC, 100 A, 735x115x115mm



Click [here](#) for the 3D model.

### Dimensions

D	34mm MIN
L	735mm MIN
W	115mm MIN
H	115mm MIN
A	50mm
B	107mm

### Packaging Specifications

Packaging	Bulk
Packaging Quantity	1

### General Information

Series	FLLE2-SR
Style	Screen Room Filters
Description	Single Phase Power Line Filters for Shielded Rooms and Secure Areas
Phase	Single-phase
RoHS	Yes
Qualifications	UL 1283
Terminal Type	1" NPSL

### Specifications

Voltage AC	277 VAC
Rated Current	100 A
Rated Temperature	40°C
Temperature Range	-25/+85°C
Climate Category	25/085/21
Leakage Current	4,960 mA
DC Resistance	3.2 mOhms
Capacitance	43.2 uF