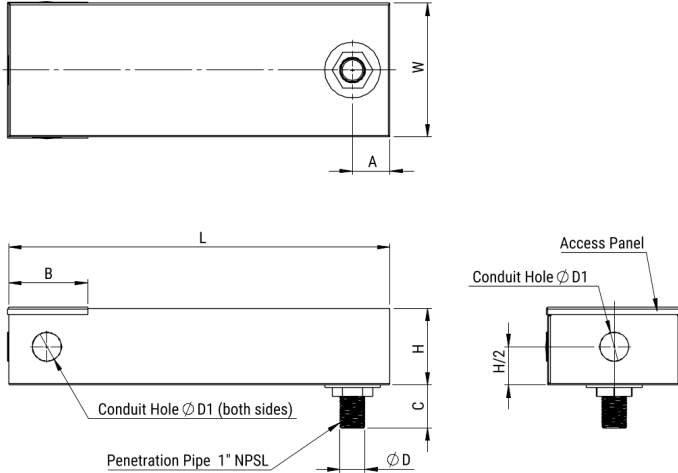


FLLE2030ASRW1

Aliases (LLE2030ASRW1)

KEMET, FLLE2-SR, EMI/RFI Filters, Noise Suppression, 480 VAC, 30 A, 510x180x105mm



Click [here](#) for the 3D model.

Dimensions	
D	34mm MIN
L	510mm MIN
W	180mm MIN
H	105mm MIN
A	51.5mm
B	102mm

Packaging Specifications	
Packaging	Bulk
Packaging Quantity	1

General Information	
Series	FLLE2-SR
Style	Screen Room Filters
Description	Single Phase Power Line Filters for Shielded Rooms and Secure Areas
Phase	Single-phase
RoHS	Yes
Qualifications	UL 1283
Terminal Type	1" NPSL

Specifications	
Voltage AC	480 VAC
Rated Current	30 A
Rated Temperature	40°C
Temperature Range	-25/+85°C
Climate Category	25/085/21
Leakage Current	2,290 mA
DC Resistance	14 mOhms
Capacitance	20 uF

Statements of suitability for certain applications are based on our knowledge of typical operating conditions for such applications, but are not intended to constitute - and we specifically disclaim - any warranty concerning suitability for a specific customer application or use. This Information is intended for use only by customers who have the requisite experience and capability to determine the correct products for their application. Any technical advice inferred from this Information or otherwise provided by us with reference to the use of our products is given gratis, and we assume no obligation or liability for the advice given or results obtained.