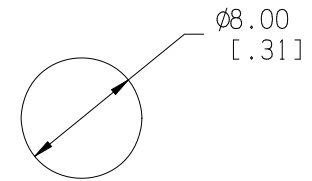
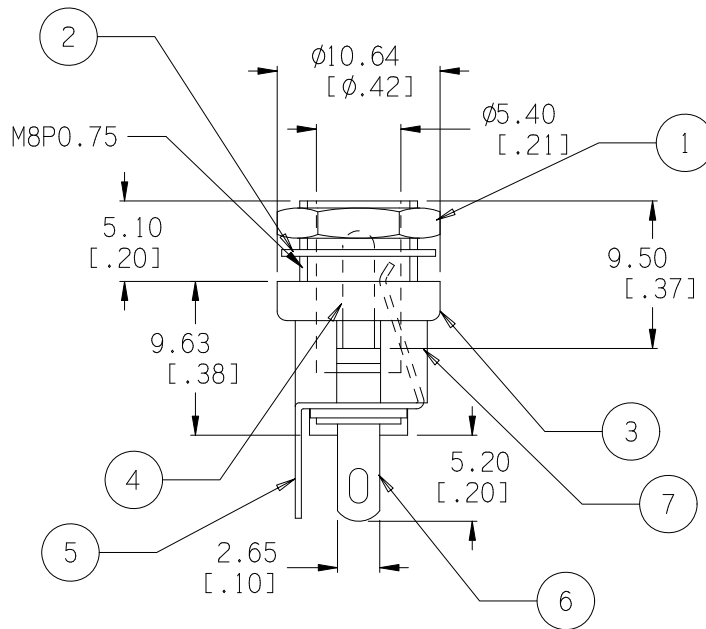
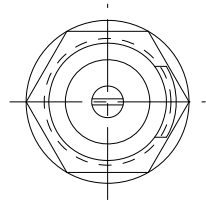


ELECTRICAL SPECS:

1. LIFE: 10,000 INSERTION/WITHDRAWAL CYCLE MINIMUM
2. CONTACT RESISTANCE: 50mΩ MAXIMUM
3. INSULATION RESISTANCE: 1000mΩ MINIMUM
4. DIELECTRIC WITHSTANDING VOLTAGE: 500AC MAXIMUM
5. MAXIMUM RATING: 5A, 12V DC



PANEL CUT-OUT

Estimated weight 3.05 g

Date	SYM	REVISION RECORD	AUTH	DR.	CK.
05/08/04	A	ADDED ELECTRICAL SPECS	T.B.	B.S.	
08/25/17	B	DIM. 10.64 WAS 10.80 DIM. 5.10 WAS 5.50 DIM. 9.63 WAS 10.20 DIM. 5.20 WAS 5.70 DIM. 9.50 WAS 10.00 DIM. 5.40 WAS 5.60	T.B.	B.S.	

ITEM NO.	PART NAME	MATL. SPECIFICATION	Tolerance (Inches)	MPD Memory Protection Devices, Inc. 200 Broad Hollow Road, Farmingdale, New York 11735	
1	HEX. NUT	BRASS, NICKLE PLTD.	Decimal	Scale	Drawn By B.S.
2	FLAT WASHER	IRON, NICKLE PLTD.	±.5 (.020)		Approved By T.B.
3	TOP HOUSING	BRASS, NICKLE PLTD.	Fractional	Title DC JACK - CHASSIS MOUNT, OPEN CIRCUIT	
4	PIN (Ø2.1)	COPPER, NICKLE PLTD.	± .8 (.030)	Date	Drawing Number
5	SOLDER TERMINAL	BRASS, SILVER PLTD.	Angular	08/25/17	EJ501A
6	SOLDER TERMINAL	BRASS, SILVER PLTD.	± 3°		
7	BOTTOM HOUSING	NYLON, BLACK			