

GlobTek, Inc. www.globtek.com 186 Veterans Drive, Northvale, NJ 07647 Tel. (201) 784-1000 Fax (201) 784-0111	Drawing Title: Connector, UL 1310 Class 2 Transformer, Efficiency Level: , Case Color/Style: , Wall Plug-in, Unregulated AC-DC Power Supply AC Adaptor, Input Rating: 100-240V~, 50-60Hz, , Output Rating: W, 0.0V@0.0A, Output Configuration: mm, / Cond, , , Ferrite: , Model No. Connector Part No./Ordering No. V01-TWISTLOCK	
		Rev A

In Addition to GlobTek Inc.'s renewed ISO9001:2008 - Quality Management System Certification, GlobTek Inc. is now certified to:

ISO13485:2003 - Medical Devices Quality Management System Certification

ISO14001:2004 - Environmental Management System Certification

ISO Certificates are available online at <http://www.globtek.com/iso-certificates/>

The acceptance of this specification and use of the product described in this document indicates the acceptance and binding of the customer to Globtek TERMS AND CONDITIONS (attached to the end of this document), which supersede all other agreements, terms, and conditions (<http://www.globtek.com/terms-and-conditions/>).

Prop 65 Statement:<https://www.globtek.com/prop-65-statement.pdf>

Footnote:

GlobTek Inc. will not be liable for the safety and performance of these power supplies if unauthorized access and repair occurs. End user should consult applicable UL, CSA or EN standards for proper installation instruction.

Limitation of Use:

GlobTek products are intended for use with commercial, medical, and/or industrial equipment only. GlobTek product are not authorized for use as mission critical components in life support hazardous environment, nuclear or aircraft applications without prior written approval from the CEO of GlobTek Inc.

Contents of this document are subject to change without prior notice.

Customer Approval of Specification:

Please approve, sign and send back to GlobTek so we can complete order processing.

A delay in receipt of this form will delay delivery schedule.

Company Name:

Customer P/N:

Quote Number:

Date:

Authorized Representative Name:

Authorized Representative Signature:

GlobTek, Inc. www.globtek.com 186 Veterans Drive, Northvale, NJ 07647 Tel. (201) 784-1000 Fax (201) 784-0111	Drawing Title: Connector, UL 1310 Class 2 Transformer, Efficiency Level: , Case Color/Style: , Wall Plug-in, Unregulated AC-DC Power Supply AC Adaptor, Input Rating: 100-240V~, 50-60Hz, , Output Rating: W, 0.0V@0.0A, Output Configuration: mm, / Cond, , , Ferrite: ,		
	Model No. Connector		
	Part No./Ordering No. V01-TWISTLOCK		Rev A

REVISION HISTORY

REV	DESCRIPTION	SUB	DATE	APPROVED
A	Initial release	DR	03/02/2022	DAVID

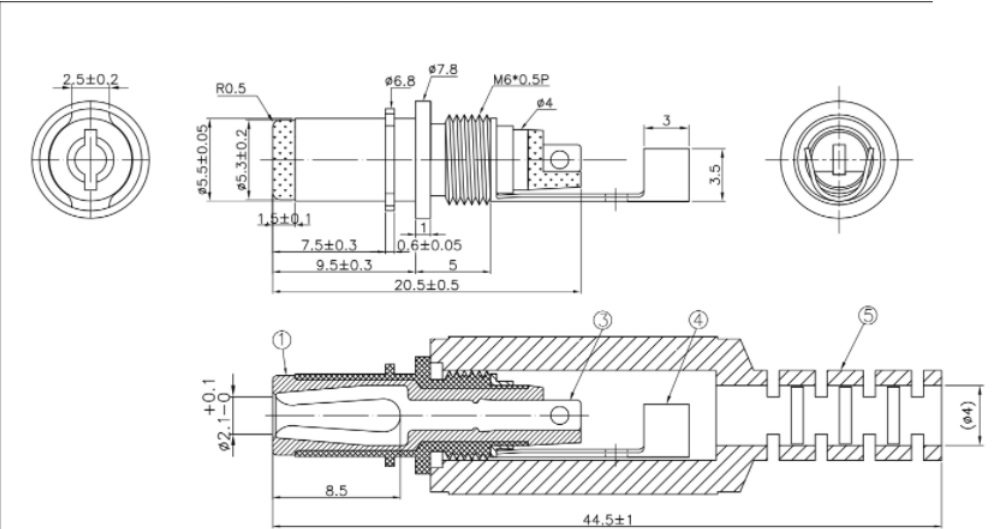
AGENCY ONLINE DOCUMENTS

RoHS/RoHS3 Declaration	https://www.globtek.com/pdf/rohs_cert/01t3a000005KjdKAAS
REACH Declaration	https://www.globtek.com/pdf/iso_certificates/REACH.pdf
Conflict Minerals Declaration	https://www.globtek.com/pdf/conflict-minerals.pdf
Prop 65 Statement	https://en.globtek.com/prop-65-statement.pdf

IPXY rating is based on 3rd party testing and customers should check suitability and test system level IPXY rating before ordering.

GlobTek, Inc. www.globtek.com 186 Veterans Drive, Northvale, NJ 07647 Tel. (201) 784-1000 Fax (201) 784-0111	Drawing Title: Connector, UL 1310 Class 2 Transformer, Efficiency Level: , Case Color/Style: , Wall Plug-in, Unregulated AC-DC Power Supply AC Adaptor, Input Rating: 100-240V~, 50-60Hz, , Output Rating: W, 0.0V@0.0A, Output Configuration: mm, / Cond, , , Ferrite: ,	
	Model No. Connector	
	Part No./Ordering No. V01-TWISTLOCK	Rev A

REWIREABLE PLUG 5.5*2.5*9.5MM WITH WINGS FOR LOCKING
RATING: 0.5A 12V
DIALECTRIC WITHSTAND: 500 V
Insulation Resistance: > 100 MΩ @ 500 VDC
Allowable Operation Temperature: -20 °C to 70 °C
Lifetime: 5000 Insertions



7	
6	
5	TPR BLACK
4	BRASS NICKEL
3	P-BRONZE NICKEL
2	BRASS NICKEL
1	PBT BLACK
NO	CONTENT

GlobTek, Inc. www.globtek.com 186 Veterans Drive, Northvale, NJ 07647 Tel. (201) 784-1000 Fax (201) 784-0111	Drawing Title: Connector, UL 1310 Class 2 Transformer, Efficiency Level: , Case Color/Style: , Wall Plug-in, Unregulated AC-DC Power Supply AC Adaptor, Input Rating: 100-240V~, 50-60Hz, , Output Rating: W, 0.0V@0.0A, Output Configuration: mm, / Cond, , , Ferrite: ,	
	Model No. Connector	
	Part No./Ordering No. V01-TWISTLOCK	Rev A

PACKAGING

Packing Spec P/N:	
Box Qty:	1000
Gift Box Size (mm):	
Gift Box Color:	White
Master Carton Size (mm):	TBD
Master Carton Cubic Volume (m³): 0.00	
Master GW (Kg):	kg
wt Ea. (Kg):	kg
wt Ea. (Kg):	kg
LABEL SPECS: ,	
PACK SPEC:	