



- 1
- 2
- 3
- 4
- 5
- 6
- 7
- 8
- 9
- 10
- 11
- 12
- 13
- 14
- 15
- 16
- 17
- 18
- 19

**MATERIAL**

Glass-fibre reinforced polyamide based (PA) technopolymer, black colour, matte finish.

**PACKING RING**

NBR synthetic rubber flat washer, or in FKM (such as VITON®)\*.

**STANDARD EXECUTIONS**

- **TCE.**: with NBR packing ring.

- **TCE-FKM**: with FKM packing ring.

Suitable for use with fuels (such as diesel and high octane petrol), alcohols, and weak organic acids.

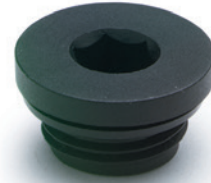
**MAXIMUM CONTINUOUS WORKING TEMPERATURE**

100°C.

**TECHNICAL DATA**

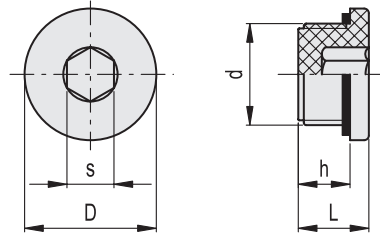
The tightening torque indicated in the table guarantees an optimal tightness, keeping the packing ring in the correct position.

\* Registered trademark by DuPont Dow Elastomers.



ELESA Original design

Conversion Table	
1 mm = 0.039 inch	
mm	inch
12	0.47
13	0.51
15	0.59
16.5	0.65
17.5	0.69
18.5	0.73
19	0.75



**TCE.**

**METRIC**

Code	Description	s	D	d	h	L	Tightening torque [Nm]	⚖️
161033	TCE.1/4	6	18	G 1/4	9	12	3	4
161034	TCE.3/8	8	22	G 3/8	9	13	3+5	5
161035	TCE.1/2	10	28	G 1/2	11	15	3+4	8
161036	TCE.3/4	12	32	G 3/4	12	16.5	3+5	14
161037	TCE.1	17	40	G 1	13	17.5	10+15	18.5
161038	TCE.1¼	22	50	G 1¼	13	19	10+15	29.5
161039	TCE.1½	24	55	G 1½	13	18.5	15+18	36.5
161052	TCE.10x1.5	5	14	M10x1.5	9	12	1	1.5
161053	TCE.12x1.5	6	20	M12x1.5	9	12	3	2.5
161054	TCE.14x1.5	6	20	M14x1.5	9	12	3	3
161055	TCE.16x1.5	8	22	M16x1.5	9	13	3+5	4
161056	TCE.18x1.5	10	28	M18x1.5	11	15	3+4	6
161057	TCE.20x1.5	10	28	M20x1.5	11	15	3+4	7
161058	TCE.22x1.5	12	32	M22x1.5	12	16.5	3+5	9.5

**TCE-FKM**

Code	Description	s	D	d	h	L	Tightening torque [Nm]	⚖️
161023	TCE.1/4-FKM	6	18	G 1/4	9	12	3	4
161024	TCE.3/8-FKM	8	22	G 3/8	9	13	3+5	5
161025	TCE.1/2-FKM	10	28	G 1/2	11	15	3+4	8
161026	TCE.3/4-FKM	12	32	G 3/4	12	16.5	3+5	14

Accessories for hydraulic systems