

2300281-1 ✓ ACTIVE

zQSFP+/QSFP28

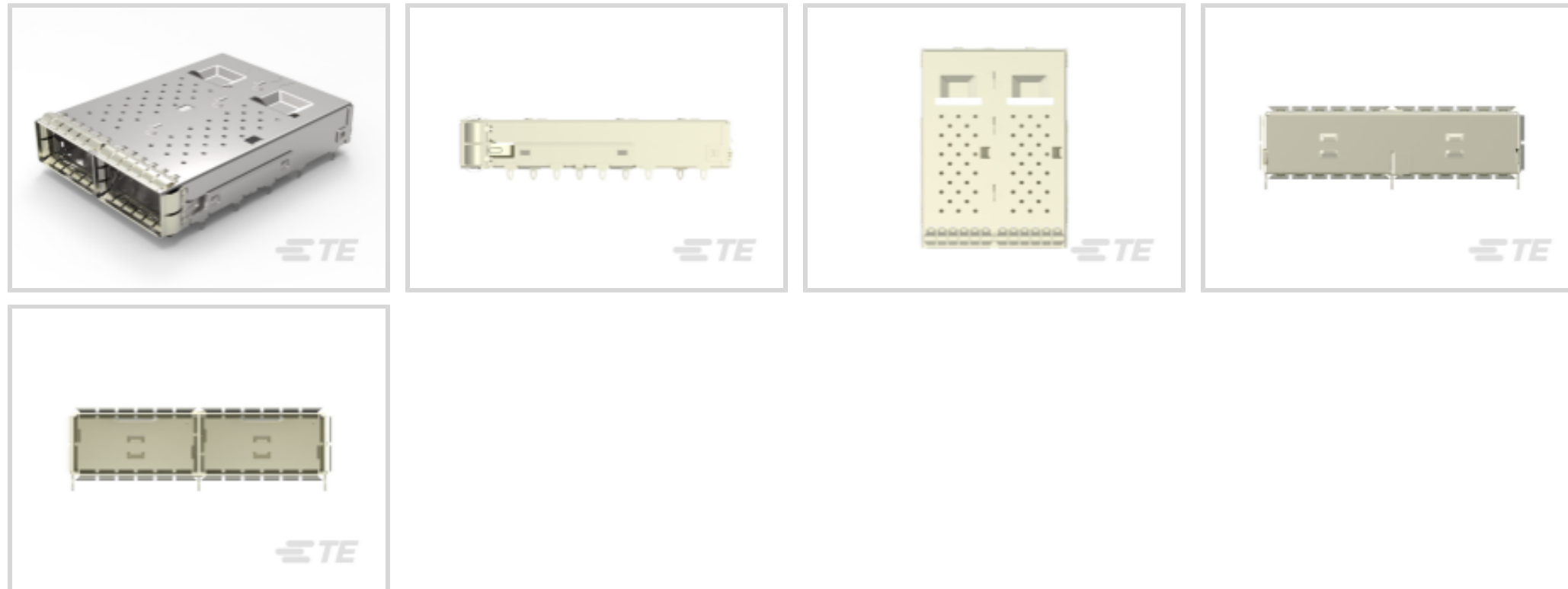
TE Internal #: 2300281-1

QSFP28/56, Cage Assembly, .748in [19mm] Centerline, Operating Temperature Range -40 - 85 °C [-40 - 185 °F], 2 Ports, Port Matrix Configuration 1 x 2

[View on TE.com >](#)



Connectors > Pluggable IO Connectors & Cages



Pluggable I/O Product Type: **Cage Assembly**

Centerline (Pitch): **19 mm [.748 in]**

Operating Temperature Range: **-40 - 85 °C [-40 - 185 °F]**

Number of Ports: **2**

Port Matrix Configuration: **1 x 2**

Features

Product Type Features

| | |
|----------------------------|---------------|
| Cage Type | Ganged |
| Pluggable I/O Product Type | Cage Assembly |
| Form Factor | QSFP28/56 |

Configuration Features

| | |
|-------------------------------------|-------|
| Number of Rear EONs per Port Column | 0 |
| Number of Ports | 2 |
| Port Matrix Configuration | 1 x 2 |

Contact Features

| | |
|---|-----|
| PCB Contact Termination Area Plating Material | Tin |
|---|-----|

Termination Features

| | |
|---|--------------------------|
| Termination Post & Tail Length | 2.05 mm [.081 in] |
| Termination Method to Printed Circuit Board | Through Hole - Press-Fit |

Housing Features

| | |
|--|--|
| | |
|--|--|



| | |
|---------------|---------------|
| Cage Material | Nickel Silver |
|---------------|---------------|

| | |
|--------------------|----------------|
| Centerline (Pitch) | 19 mm[.748 in] |
|--------------------|----------------|

Dimensions

| | |
|-----------------------------|------------------|
| PCB Thickness (Recommended) | 1.57 mm[.062 in] |
|-----------------------------|------------------|

Usage Conditions

| | |
|-----------------------------|---------------------------|
| Operating Temperature Range | -40 - 85 °C[-40 - 185 °F] |
|-----------------------------|---------------------------|

Operation/Application

| | |
|----------------------|----|
| Heat Sink Compatible | No |
|----------------------|----|

Industry Standards

| | |
|------------------------|----------|
| UL Flammability Rating | UL 94V-0 |
|------------------------|----------|

Packaging Features

| | |
|------------------|------------|
| Packaging Method | Box & Tray |
|------------------|------------|

Other

| | |
|--------------------|----|
| Included Lightpipe | No |
|--------------------|----|

| | |
|------------------------------|-------------------------------|
| EMI Containment Feature Type | Internal/External EMI Springs |
|------------------------------|-------------------------------|

Product Compliance

[For compliance documentation, visit the product page on TE.com>](#)

| | |
|------------------------------|-----------|
| EU RoHS Directive 2011/65/EU | Compliant |
|------------------------------|-----------|

| | |
|-----------------------------|-----------|
| EU ELV Directive 2000/53/EC | Compliant |
|-----------------------------|-----------|

| | |
|---|---|
| China RoHS 2 Directive MIIT Order No 32, 2016 | No Restricted Materials Above Threshold |
|---|---|

| | |
|--|---|
| EU REACH Regulation (EC) No. 1907/2006 | Current ECHA Candidate List: JAN 2024 (240) Candidate List Declared Against: JAN 2022 (223) Does not contain REACH SVHC |
|--|---|

| | |
|-----------------|---|
| Halogen Content | Low Halogen - Br, Cl, F, I < 900 ppm per homogenous material. Also BFR/CFR/PVC Free |
|-----------------|---|

| | |
|---------------------------|--|
| Solder Process Capability | Not applicable for solder process capability |
|---------------------------|--|

Product Compliance Disclaimer

This information is provided based on reasonable inquiry of our suppliers and represents our current actual knowledge based on the information they provided. This information is subject to change. The part numbers that TE has identified as EU RoHS compliant have a maximum concentration of 0.1% by weight in homogenous materials for lead, hexavalent chromium, mercury, PBB, PBDE, DBP, BBP, DEHP, DIBP, and 0.01% for cadmium, or qualify for an exemption to these limits as defined in the Annexes of Directive 2011/65/EU (RoHS2). Finished electrical and electronic equipment products

will be CE marked as required by Directive 2011/65/EU. Components may not be CE marked. Additionally, the part numbers that TE has identified as EU ELV compliant have a maximum concentration of 0.1% by weight in homogenous materials for lead, hexavalent chromium, and mercury, and 0.01% for cadmium, or qualify for an exemption to these limits as defined in the Annexes of Directive 2000/53/EC (ELV). Regarding the REACH Regulation, the information TE provides on SVHC in articles for this part number is based on the latest European Chemicals Agency (ECHA) 'Guidance on requirements for substances in articles' posted at this URL: <https://echa.europa.eu/guidance-documents/guidance-on-reach>

Compatible Parts



TE Part # CAT-C11-Z806726
QSFP28 to QSFP28 Cable Assembly:
30 AWG



TE Part # CAT-C11-N49
QSFP28-Two QSFP28 Cable
Assembly: 30 AWG



TE Part # CAT-C11-Z8
QSFP28 to QSFP28 Cable Assembly:
26 AWG



TE Part # CAT-C11-N490333
QSFP28-Four SFP+ Cable Assembly:
30 AWG



TE Part # CAT-C11-N490325
QSFP28-Four SFP+ Cable Assembly:
26 AWG



TE Part # CAT-Q17-N490325
QSFP56 to QSFP56 Cable Assembly:
30 AWG



TE Part # CAT-Q17-N49033
QSFP56-Two QSFP56 Cable
Assembly: 30 AWG



TE Part # CAT-C11-Q17
QSFP56 to QSFP56 Cable Assembly:
26 AWG



TE Part # CAT-Q17-N49011
QSFP56-Four SFP56 Cable Assembly:
30 AWG



TE Part # CAT-Q17-N490333
QSFP56-Four SFP56 Cable Assembly:
26 AWG



TE Part # 1551920-2
zQSFP+ connector assembly



TE Part # 2185234-1
ASSY, SEATING TOOL, QSFP28



TE Part # 2829040-2
QSFP IB EDR, 33AWG, 1.0M



TE Part # 2829040-4
QSFP IB EDR, 30AWG, 1.0M



TE Part # 2829040-6
QSFP IB EDR, 30AWG, 2.0M



TE Part # 2829040-7
QSFP IB EDR, 26AWG, 2.0M

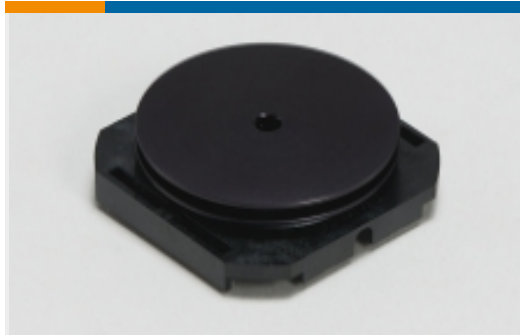


TE Part # 2829040-8
QSFP IB EDR, 26AWG, 3.0M



TE Part # 2821033-8
QSFP TO [4]SFP+, 28G, 1M, 33AWG

Also in the Series | zQSFP+/QSFP28



Heat Sinks(7)



Pluggable I/O Cable Assemblies(78)



Pluggable IO Connectors & Cages(424)

Customers Also Bought



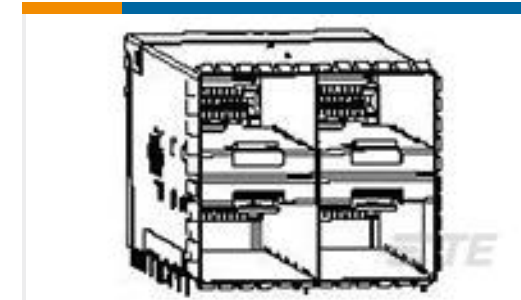
TE Part # 6469083-1
HMZD 3PAIR, HDR ASSY, 25MM MOD



TE Part # 2227669-1
zQSFP+ STACKED RECEPTACLE ASSEMBLY 2X1



TE Part # 2317010-1
ZSFP+ 1X2 CAGE BELLY TO BELLY



TE Part # 2198325-5
zSFP+ STACKED 2X2 RECEPTACLE ASSEMBLY



TE Part # 2289129-5
ZQSFP+ CAGE& CONN 2X2, EMI SPRING, 2 LP



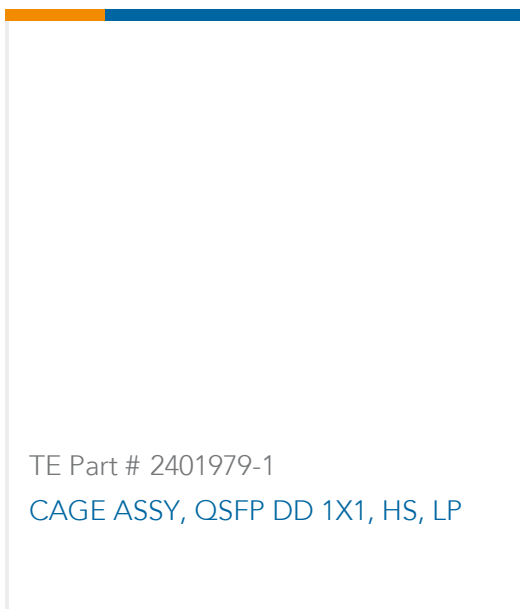
TE Part # 2016623-6
RF CA,1.0-2.3 BULKHEAD TO UMCC GEN1,1.37



TE Part # 2016623-7
RF CA,1.0-2.3 BKD TO UMCC GEN1, 1.37 BK



TE Part # 2324313-9
RCPT CAGE ASSY W/ HS & LP 1X2 QSFP-DD



TE Part # 2401979-1
CAGE ASSY, QSFP DD 1X1, HS, LP



Documents

Product Drawings

[CAGE ASSEMBLY, 1X2, QSFP28, SPRING](#)

English

CAD Files

[3D PDF](#)

3D

Customer View Model

[ENG_CVM_CVM_2300281-1_A.2d_dxf.zip](#)

English

Customer View Model

[ENG_CVM_CVM_2300281-1_A.3d_igs.zip](#)

English

Customer View Model

[ENG_CVM_CVM_2300281-1_A.3d_stp.zip](#)

English

By downloading the CAD file I accept and agree to the [Terms and Conditions](#) of use.

Product Specifications

[Application Specification](#)

English

[Application Specification](#)

English