

2170746-2 ✓ ACTIVE

zQSFP+/QSFP28

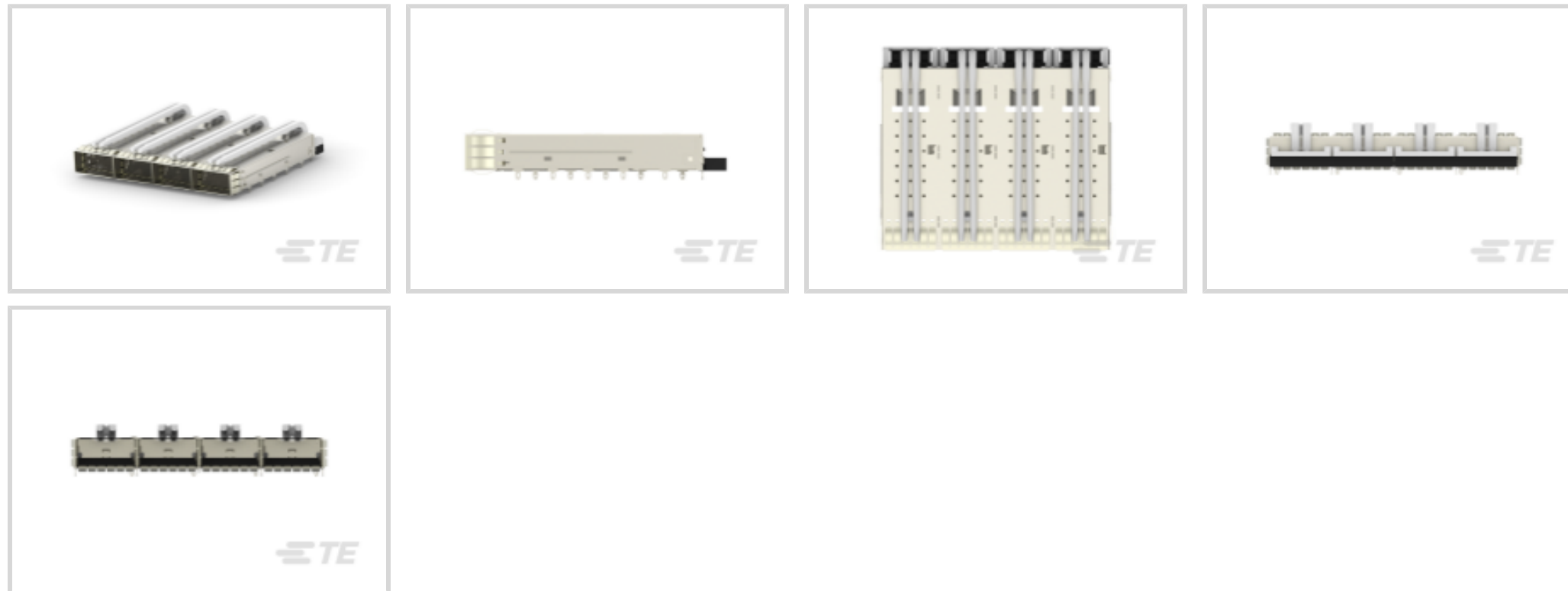
TE Internal #: 2170746-2

QSFP28/56, Cage Assembly, Signal, Operating Temperature Range  
-40 - 85 °C [-40 - 185 °F], Data Rate (Max) 28 Gb/s, 4 Ports

[View on TE.com >](#)



Connectors > Pluggable IO Connectors & Cages



Pluggable I/O Product Type: **Cage Assembly**

Sealable: **No**

Circuit Application: **Signal**

Operating Temperature Range: **-40 - 85 °C [-40 - 185 °F]**

Data Rate (Max): **28 Gb/s**

## Features

### Product Type Features

Cage Type	Ganged
Pluggable I/O Product Type	Cage Assembly
Sealable	No
Form Factor	QSFP28/56

### Configuration Features

Number of Rear EONs per Port Column	1
Number of Ports	4
Port Matrix Configuration	1 x 4

### Electrical Characteristics

Data Rate (Max)	28 Gb/s
-----------------	---------

### Contact Features

PCB Contact Termination Area Plating Material	Tin
---	-----

### Termination Features

Termination Post & Tail Length	2.05 mm[.081 in]
--------------------------------	------------------



Termination Method to Printed Circuit Board

Through Hole - Press-Fit

### Housing Features

Cage Material

Nickel Silver

### Dimensions

PCB Thickness (Recommended)

1.57 mm[.062 in]

### Usage Conditions

Operating Temperature Range

-40 - 85 °C[-40 - 185 °F]

### Operation/Application

Pluggable I/O Applications

SFP+ Stacked Belly-to-Belly

Heat Sink Compatible

No

Circuit Application

Signal

### Industry Standards

UL Flammability Rating

UL 94V-0

### Packaging Features

Packaging Method

Box &amp; Tray

### Other

Included Lightpipe

Yes

EMI Containment Feature Type

Internal/External EMI Springs

## Product Compliance

[For compliance documentation, visit the product page on TE.com>](#)

EU RoHS Directive 2011/65/EU

Compliant

EU ELV Directive 2000/53/EC

Compliant

China RoHS 2 Directive MIIT Order No 32, 2016

No Restricted Materials Above Threshold

EU REACH Regulation (EC) No. 1907/2006

Current ECHA Candidate List: JAN 2024  
(240)  
Candidate List Declared Against: JAN 2024  
(240)  
Does not contain REACH SVHC

Halogen Content

Not Low Halogen - contains Br or Cl > 900  
ppm.

Solder Process Capability

Not applicable for solder process capability

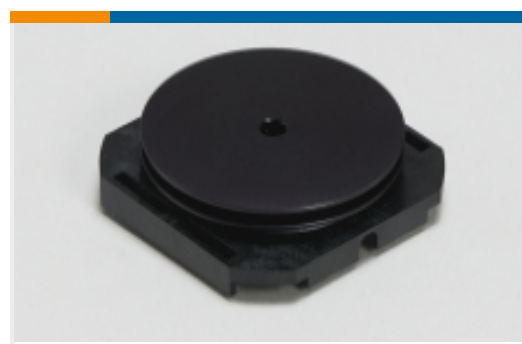
Product Compliance Disclaimer

This information is provided based on reasonable inquiry of our suppliers and represents our current actual knowledge based on the information they provided. This information is subject to change. The part numbers that TE has identified as EU RoHS compliant have a maximum concentration of 0.1% by weight in homogenous materials for lead, hexavalent chromium, mercury, PBB, PBDE, DBP, BBP, DEHP, DIBP, and 0.01% for cadmium, or qualify for an exemption to these limits as defined in the Annexes of Directive 2011/65/EU (RoHS2). Finished electrical and electronic equipment products will be CE marked as required by Directive 2011/65/EU. Components may not be CE marked. Additionally, the part numbers that TE has identified as EU ELV compliant have a maximum concentration of 0.1% by weight in homogenous materials for lead, hexavalent chromium, and mercury, and 0.01% for cadmium, or qualify for an exemption to these limits as defined in the Annexes of Directive 2000/53/EC (ELV). Regarding the REACH Regulation, the information TE provides on SVHC in articles for this part number is based on the latest European Chemicals Agency (ECHA) 'Guidance on requirements for substances in articles' posted at this URL: <https://echa.europa.eu/guidance-documents/guidance-on-reach>

## Compatible Parts



Also in the Series | **zQSFP+/QSFP28**



Heat Sinks(7)



Pluggable I/O Cable Assemblies(78)



Pluggable IO Connectors &amp; Cages(424)

## Customers Also Bought



TE Part # 2102502-4  
FORTIS LRM, GROUNDING POST,  
PASSIVATED



TE Part # 8-1879011-5  
SMF2 680K 5%



TE Part # 2-2319764-0  
E STACK PIANO 10P G SHORT TUBE  
PD OFF



TE Part # 4-2176379-5  
RQ 0805 309R 0.1% 10PPM 5K RL



TE Part # 2351450-1  
SMINSA SW PPL 1.47N 5A/3A AC 3A  
DC SP



TE Part # 3-1469388-7  
ATCA GUIDE MODULE VERT LONG  
PIN



TE Part # 1-1744439-8  
EP2.5 Shrd HDR ASSY 18P VERT, GW  
PIN



TE Part # 2842154-5  
10P,2MM,BRK HDR,DRRT,2.8,0.1AU,  
TB W/CAP

## Documents

### Product Drawings

CAGE ASSY, 1X4, QSFP28, SPRING, LP

English

### CAD Files

3D PDF

3D

Customer View Model

[ENG\\_CVM\\_CVM\\_2170746-2\\_A.2d\\_dxf.zip](#)

English

Customer View Model

[ENG\\_CVM\\_CVM\\_2170746-2\\_A.3d\\_igs.zip](#)

English

Customer View Model

[ENG\\_CVM\\_CVM\\_2170746-2\\_A.3d\\_stp.zip](#)

English

By downloading the CAD file I accept and agree to the [Terms and Conditions](#) of use.



---

**Datasheets & Catalog Pages**

[QSFP28/56 and zQSFP+ Interconnects](#)

English

---

**Product Specifications**

[Application Specification](#)

English