



Connectors > Pluggable IO Connectors & Cages



Pluggable I/O Product Type: **Cage Assembly**

Sealable: **No**

Circuit Application: **Signal**

Operating Temperature Range: **-55 – 85 °C [-67 – 185 °F]**

Data Rate (Max): **4 Gb/s**

Features

Product Type Features

Cage Type	Ganged
Pluggable I/O Product Type	Cage Assembly
Sealable	No
Form Factor	SFP

Configuration Features

Number of Ports	2
Port Matrix Configuration	1 x 2

Electrical Characteristics

Data Rate (Max)	4 Gb/s
-----------------	--------

Termination Features

Termination Method to Printed Circuit Board	Through Hole - Press-Fit
---	--------------------------

Usage Conditions

Operating Temperature Range	-55 – 85 °C[-67 – 185 °F]
-----------------------------	---------------------------

Operation/Application



Pluggable I/O Applications	SFP
Circuit Application	Signal
Other	
Included Lightpipe	No
EMI Containment Feature Type	Internal/External EMI Springs

Product Compliance

For compliance documentation, visit the product page on [TE.com](#)>

EU RoHS Directive 2011/65/EU	Compliant
EU ELV Directive 2000/53/EC	Compliant
China RoHS 2 Directive MIIT Order No 32, 2016	No Restricted Materials Above Threshold
EU REACH Regulation (EC) No. 1907/2006	Current ECHA Candidate List: JAN 2024 (240) Candidate List Declared Against: JAN 2024 (240) Does not contain REACH SVHC
Halogen Content	Low Halogen - Br, Cl, F, I < 900 ppm per homogenous material. Also BFR/CFR/PVC Free
Solder Process Capability	Not applicable for solder process capability

Product Compliance Disclaimer

This information is provided based on reasonable inquiry of our suppliers and represents our current actual knowledge based on the information they provided. This information is subject to change. The part numbers that TE has identified as EU RoHS compliant have a maximum concentration of 0.1% by weight in homogenous materials for lead, hexavalent chromium, mercury, PBB, PBDE, DBP, BBP, DEHP, DIBP, and 0.01% for cadmium, or qualify for an exemption to these limits as defined in the Annexes of Directive 2011/65/EU (RoHS2). Finished electrical and electronic equipment products will be CE marked as required by Directive 2011/65/EU. Components may not be CE marked. Additionally, the part numbers that TE has identified as EU ELV compliant have a maximum concentration of 0.1% by weight in homogenous materials for lead, hexavalent chromium, and mercury, and 0.01% for cadmium, or qualify for an exemption to these limits as defined in the Annexes of Directive 2000/53/EC (ELV). Regarding the REACH Regulation, the information TE provides on SVHC in articles for this part number is based on the latest European Chemicals Agency (ECHA) ‘Guidance on requirements for substances in articles’ posted at this URL: <https://echa.europa.eu/guidance-documents/guidance-on-reach>

Compatible Parts



TE Part # 2185239-3
ASSY, SEATING TOOL, SFP+

Customers Also Bought



TE Part #1367073-2
20 POS SMT CONN, SFP, 30AU



TE Part #6274315-1
BNC JACK, NONSWITCHING



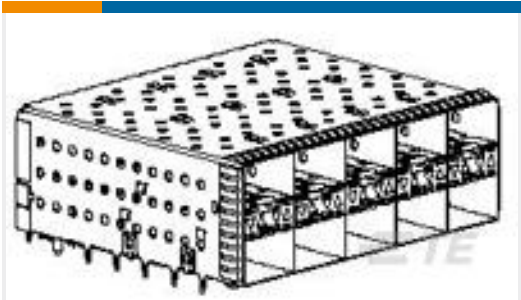
TE Part #1-1879134-4
RN 0603 13K3 0.1% 10PPM 1K RL



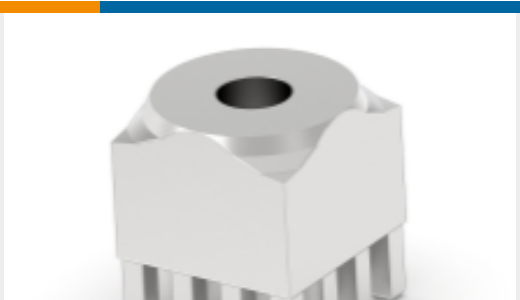
TE Part #148057-5
096 EURO TYP C RECP 13MM ASSY



TE Part #5-1624113-8
3650 0805 0.36uH 5% 2K RL



TE Part #2132403-5
2X5 SFP+ w/ Springs, 4 LP Sn



TE Part #225682-E
POWELM BUCHSE VOLLM M4 4 2,54
* EP 7 CUS



TE Part #T2240002120-000
SCSF10-12

Documents

Product Drawings

SFP 1X2 CAGE ASSY, PRESS FIT

English

CAD Files

3D PDF

3D

Customer View Model

ENG_CVM_CVM_1761014-3_A.2d_dxf.zip

English

Customer View Model

ENG_CVM_CVM_1761014-3_A.3d_igs.zip

English

Customer View Model

ENG_CVM_CVM_1761014-3_A.3d_stp.zip

English

By downloading the CAD file I accept and agree to the [Terms and Conditions](#) of use.



Product Specifications

Application Specification

English

Crimping AMP 2.0mm Pitch CT Receptacle Contact

English