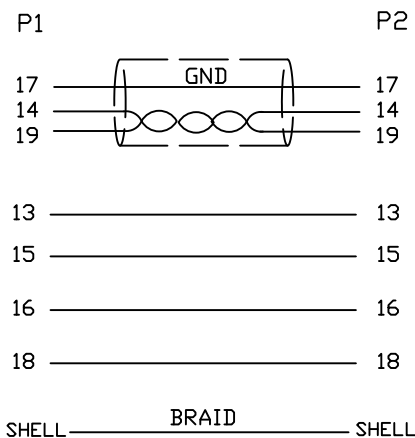
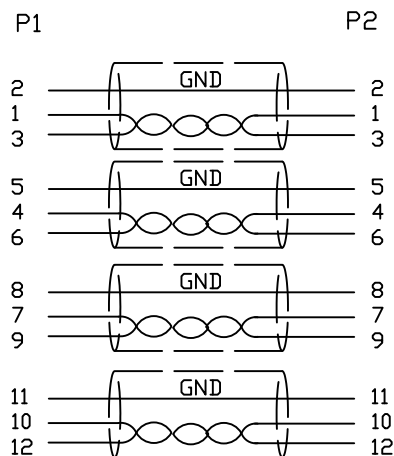


1.Wiring Diagram.



2.Cable test condition :

Open / Short : 100%

Insulation resistance : 5M ohms

Contact resistance : 2 ohm

Hipot : DC 300V / 1 sec

3.Each pcs with PE polybag.

4.For HDMI 2.0Ver.and Support Resolution ratio 3840x2160(4k)
And 60fps frame rate

NO.	PART NO.	DESCRIPTION	QTY	UNIT/REF	REV	ECN	DESCRIPTION	DATE
5	COPPER	W20MM*L35MM	2				ADD COPPER	2021/2/28
4	PVC	45P PVC BLACK OVERMOLD	25g				INITIAL RELEASE	2014/11/12
3	PE	LLDPE 500026 6201 INSIDE MOLDING	16g					
2	CONN	HDMI A TYPE MALE PIN G/F ,SHELL PLATED G/F, INSULATION BLACK	2	P1.P2				
1	CABLE	UL20276 《28AWG (7/0.127TC) *1P+D+EA+AL/MY》 *5P+28AWG (7/0.127TC) *4C +AEM(16/8/0.12AM) OD7.3 BLACK HDMI2.0V.	1	5000mm				
BILL OF MATERIAL								

DRAWN	EDWINLAI	DATE	2/28/21	TITLE	HDMI A/M TO HDMI A/M CABLE
CHECKED	Win.C	DATE	2/28/21	DWN NO.	740-10012-00500
APPROVAL				CUSTOMER P/N:	
				CUSTOMER:	
				SHEET 1 OF 1	