



## 677 SERIES 7mm High Intensity Panel Mount Indicators

### MECHANICAL / SPECIFICATIONS

MOUNTING HOLE SIZE: 0.283" (7.2 mm)

MAX PANEL THICKNESS: See part numbers

MOUNTING TORQUE:

0.362 lbs/ft (5 kg/cm)

0.217 lbs/ft or 3 kg/cm (Figure 3)

VOLTAGE OPTIONS:

6, 12 & 24 VDC (no resistor required)

OPERATING TEMP:

-20 °C to +75 °C (-4 °F to +167 °F)

STORAGE TEMP:

-40 °C to +100 °C (-40 °F to +212 °F)

ELECTRICAL CONNECTION:

Solder terminals and 6" wire leads

HOUSING:

Protruding position: Brass–Chrome or Black Plated

Recessed position: Brass–Chrome Plated

Internal position: Polycarbonate

TERMINALS: Copper–Nickel Plated

LOCK WASHER: Iron–Nickel Plated

NUT: Brass–Nickel Plated

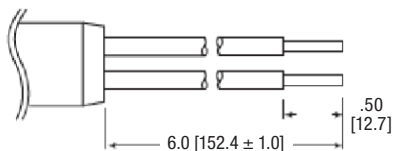
### CERTIFICATIONS & RATINGS

RoHS compliant

NEMA 4X (with gasket)

IP66 (with gasket)

6" WIRE LEADS



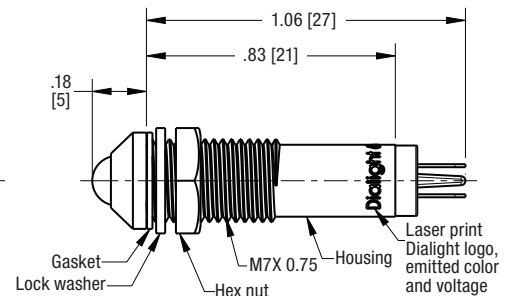
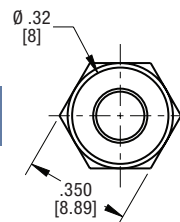
### APPLICATION

The 677 Series LED Panel Mount Indicators are designed for a variety of applications such as:

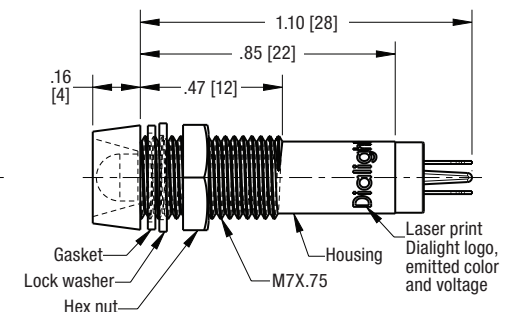
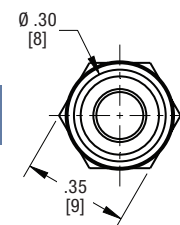
- Main power indication
- Remote power indication
- Status indication
- Maintenance and warning indication
- Instrumentation

### DIMENSIONS inches [mm]

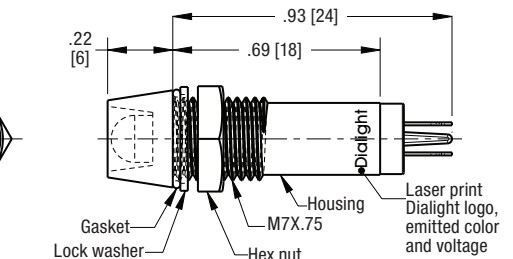
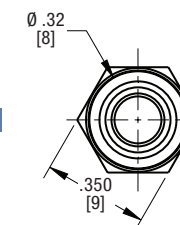
PROTRUDING  
Non-Polarized



RECESSED  
Non-Polarized



INTERNAL



ORDERING INFORMATION

**Protruding Lens**

Chrome Plated Brass Housing		Black Plated Brass Housing		Color	Voltage (VDC)	Current (mA)	Intensity Typ. (mcd)	Panel Thickness
Terminals	Wire Leads	Terminals	Wire Leads					
<a href="#">677-1112-321F</a>	<a href="#">677-1115-321F</a>	<a href="#">677-1122-321F</a>	<a href="#">677-1125-321F</a>	Red	6	15	825	0.265" (6.75 mm)
<a href="#">677-1212-322F</a>	<a href="#">677-1215-322F</a>	<a href="#">677-1222-322F</a>	<a href="#">677-1225-322F</a>	Green			4135	
<a href="#">677-1312-323F</a>	<a href="#">677-1315-323F</a>	<a href="#">677-1322-323F</a>	<a href="#">677-1325-323F</a>	Orange			560	
<a href="#">677-1412-324F</a>	<a href="#">677-1415-324F</a>	<a href="#">677-1422-324F</a>	<a href="#">677-1425-324F</a>	Blue			700	
<a href="#">677-1112-331F</a>	<a href="#">677-1115-331F</a>	<a href="#">677-1122-331F</a>	<a href="#">677-1125-331F</a>	Red	12		825	
<a href="#">677-1212-332F</a>	<a href="#">677-1215-332F</a>	<a href="#">677-1222-332F</a>	<a href="#">677-1225-332F</a>	Green			4135	
<a href="#">677-1312-333F</a>	<a href="#">677-1315-333F</a>	<a href="#">677-1322-333F</a>	<a href="#">677-1325-333F</a>	Orange			560	
<a href="#">677-1412-334F</a>	<a href="#">677-1415-334F</a>	<a href="#">677-1422-334F</a>	<a href="#">677-1425-334F</a>	Blue			700	
<a href="#">677-1112-341F</a>	<a href="#">677-1115-341F</a>	<a href="#">677-1122-341F</a>	<a href="#">677-1125-341F</a>	Red	24		825	
<a href="#">677-1212-342F</a>	<a href="#">677-1215-342F</a>	<a href="#">677-1222-342F</a>	<a href="#">677-1225-342F</a>	Green			4135	
<a href="#">677-1312-343F</a>	<a href="#">677-1315-343F</a>	<a href="#">677-1322-343F</a>	<a href="#">677-1325-343F</a>	Orange			560	
<a href="#">677-1412-344F</a>	<a href="#">677-1415-344F</a>	<a href="#">677-1422-344F</a>	<a href="#">677-1425-344F</a>	Blue			700	

**Recessed Lens**

Chrome Plated Brass Housing		Color	Voltage (VDC)	Current (mA)	Intensity Typ. (mcd)	Panel Thickness
Terminals	Wire Leads					
<a href="#">677-2112-321F</a>	<a href="#">677-2115-321F</a>	Red	6	15	925	0.336" (8.50 mm)
<a href="#">677-2212-322F</a>	<a href="#">677-2215-322F</a>	Green			4135	
<a href="#">677-2312-323F</a>	<a href="#">677-2315-323F</a>	Orange			600	
<a href="#">677-2412-324F</a>	<a href="#">677-2415-324F</a>	Blue			730	
<a href="#">677-2112-331F</a>	<a href="#">677-2115-331F</a>	Red	12		925	
<a href="#">677-2212-332F</a>	<a href="#">677-2215-332F</a>	Green			4135	
<a href="#">677-2312-333F</a>	<a href="#">677-2315-333F</a>	Orange			600	
<a href="#">677-2412-334F</a>	<a href="#">677-2415-334F</a>	Blue			730	
<a href="#">677-2112-341F</a>	<a href="#">677-2115-341F</a>	Red	24		925	
<a href="#">677-2212-342F</a>	<a href="#">677-2215-342F</a>	Green			4135	
<a href="#">677-2312-343F</a>	<a href="#">677-2315-343F</a>	Orange			600	
<a href="#">677-2412-344F</a>	<a href="#">677-2415-344F</a>	Blue			730	

**Internal Lens**

Polycarbonate Housing		Color	Voltage (VDC)	Current (mA)	Intensity Typ. (mcd)	Panel Thickness
Terminals	Wire Leads					
<a href="#">677-3132-321F</a>	<a href="#">677-3135-321F</a>	Red	6	15	1370	0.187" (4.75 mm)
<a href="#">677-3232-322F</a>	<a href="#">677-3235-322F</a>	Green			5500	
<a href="#">677-3332-323F</a>	<a href="#">677-3335-323F</a>	Orange			1280	
<a href="#">677-3432-324F</a>	<a href="#">677-3435-324F</a>	Blue			1200	
<a href="#">677-3132-331F</a>	<a href="#">677-3135-331F</a>	Red	12		1370	
<a href="#">677-3232-332F</a>	<a href="#">677-3235-332F</a>	Green			5500	
<a href="#">677-3332-333F</a>	<a href="#">677-3335-333F</a>	Orange			1280	
<a href="#">677-3432-334F</a>	<a href="#">677-3435-334F</a>	Blue			1200	
<a href="#">677-3132-341F</a>	<a href="#">677-3135-341F</a>	Red	24		1370	
<a href="#">677-3232-342F</a>	<a href="#">677-3235-342F</a>	Green			5500	
<a href="#">677-3332-343F</a>	<a href="#">677-3335-343F</a>	Orange			1280	
<a href="#">677-3432-344F</a>	<a href="#">677-3435-344F</a>	Blue			1200	



Dialight reserves the right to make changes at any time in order to supply the best product possible. The most current version of this document will always be available at: [www.dialightsignalsandcomponents.com](http://www.dialightsignalsandcomponents.com)

Warranty Statement: Except for the warranty expressly provided for at: [www.dialight.com/resources/warranties/](http://www.dialight.com/resources/warranties/), Dialight disclaims any and all other warranties, express or implied, including, without limitation, any warranties of merchantability, fitness for a particular purpose, title, and noninfringement.