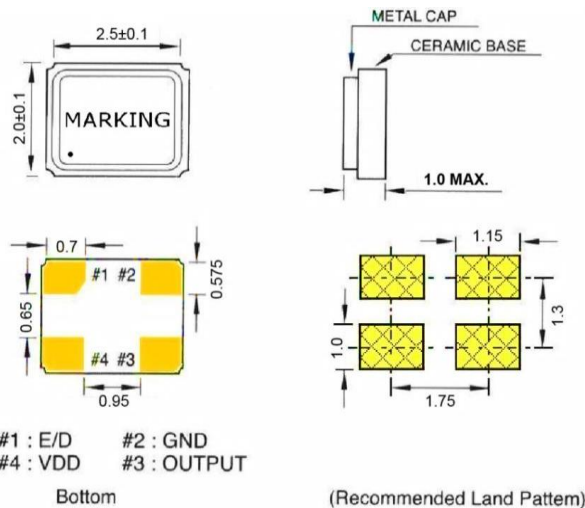


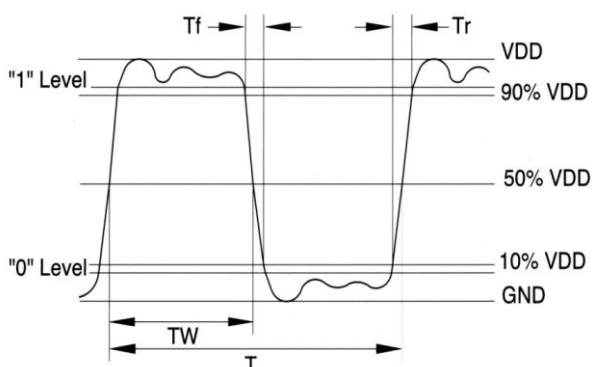
● SPECIFICATION

Model	OSC-S22 Series		
Frequency range	1.000 ~ 156.000 MHz		
Storage temperature range	- 55°C ~ + 125°C		
Operation temperature range	- 10°C ~ + 70°C , - 40°C ~ + 125°C		
Frequency stability	±10 ppm ~ ±50ppm		
Power supply voltage: (5.0V DC available on request)	3.3V DC ±10%	2.5V DC ±5%	1.8V DC ±5%
Current consumption	1.000~9.999 MHz : 7mA max	1.000~9.999 MHz : 6mA max	1.000~9.999 MHz : 3mA max
	10.000~19.999 MHz : 7mA max	10.000~19.999 MHz : 8mA max	10.000~19.999 MHz : 5mA max
	20.000~31.999 MHz : 12mA max	20.000~31.999 MHz : 8mA max	20.000~31.999 MHz : 5mA max
	32.000~156.000 MHz : 15mA max	32.000~156.000 MHz : 15mA max	32.000~156.000 MHz : 10mA max
Output level	C-MOS		
Load	15pF max.		
Output voltage level	V _{OL} : 10% V _{DD} max. / V _{OH} : 90% V _{DD} min.		
Duty cycle	40% ~ 60% at 1/2 V _{DD}		
RISE / FALL TIME	1.000~9.999MHz : 6nS max	1.000~9.999MHz : 7nS max	1.000~9.999MHz : 10nS max
	10.000~19.999 MHz : 6nS max	10.000~19.999 MHz : 7nS max	10.000~19.999 MHz : 10nS max
	20.000~31.999 MHz : 5nS max	20.000~31.999 MHz : 6nS max	20.000~31.999 MHz : 10nS max
	32.000~156.000 MHz : 5nS max	32.000~156.000 MHz : 6nS max	32.000~156.000 MHz : 10nS max
AGING	±3ppm / Year		

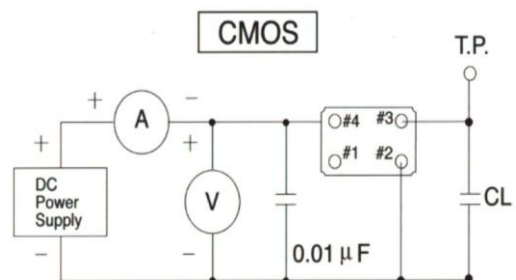
● DIMENSIONS (mm)



● OUTPUT WAVEFORM



● TEST CIRCUIT



*** Because S22 series has no by pass capacitor.
So, we recommend our customer to use capacitor 0.01μF
in join Vcc and GND.