

### Key Features & Benefits:

- Ultra-Thin Profile
- IC Rated
- Selectable Kelvin
- Simple, Quick Connect Installation to Provided J-box
- Wet Location Rated
- Energy Star Listed

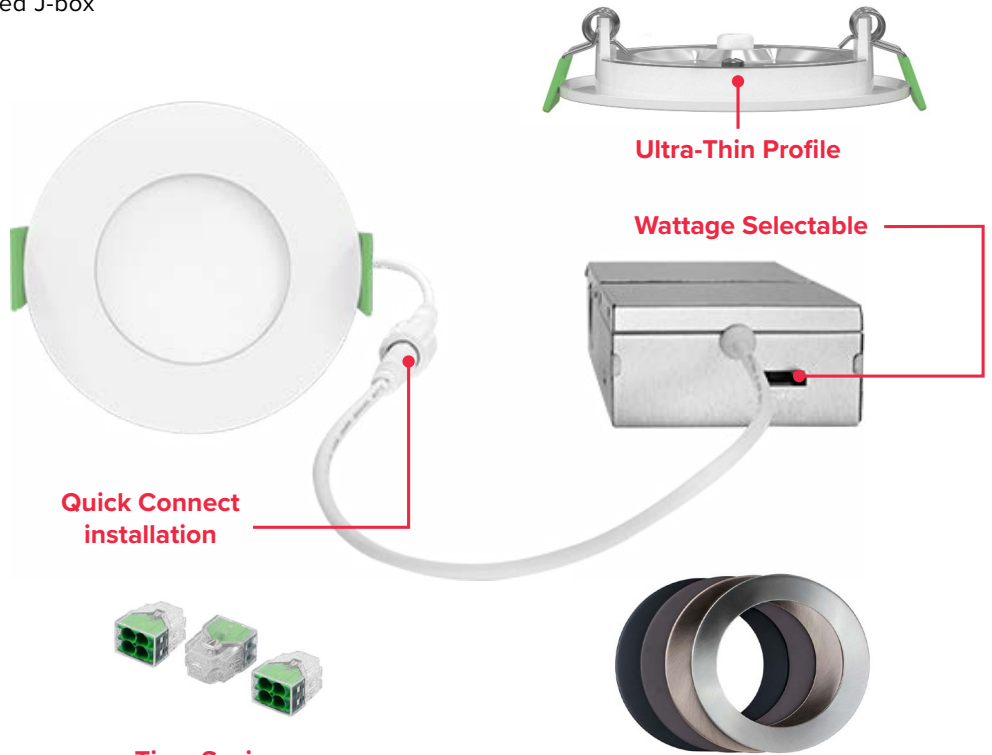
Project: \_\_\_\_\_ Date: \_\_\_\_\_  
 Catalog #: \_\_\_\_\_  
 Notes: \_\_\_\_\_

### Product Specifications:

Wattage: 6 Watts  
 Selectable Kelvin: 2700K–3000K–  
 3500K–4000K–5000K  
 Lumens: Up to 442 Lumens  
 Efficacy: Up to 74 lm/W  
 CRI: >90  
 Input Voltage: 120 VAC  
 Power Factor: >0.9  
 Input Frequency: 50/60Hz  
 Operating Temperature: -4°F to 122°F  
 Operational Lifetime: 50,000 Hrs  
 Dimming: Triac Dimming 10–100%  
 Product Weight (lbs): 0.55

### Dimensions:

Fixture: Ø3.62" x 0.84"  
 Quick Connect Line: 16"  
 Junction Box: 2.67" x 3.94" x 1.37"



Quick Connect installation

Ultra-Thin Profile

Wattage Selectable

Time Saving  
4-Port Connectors  
Included In The Box!

Field Installable Trim Kits:  
Black, Bronze, Copper & Brushed Nickel



### Ordering Guide:

ESL	-	TYPE	-	SIZE	-	WATTAGE	-	GENERATION	-	SELECTABLE KELVIN	-	FINISH
ESL	-	WFR	-	R3	-	6W	-	3	-	2750K	-	WH
		(WFR) Wafer Series		(R3) Round 3"		(6W) 6 Watts		(3) 3rd Generation		(2750K) 2700K–3000K–3500K–4000K–5000K		(WH) White

### FIELD INSTALLED ACCESSORIES

ESL-WFR3-3-Tff	3-inch Wafer field installable trim kit ff = Trim Color: Black (BK), Bronze (BZ), Brushed Nickel (BN), Copper (CP)
ESL-WFR3-4-Tff	4-inch Wafer field installable trim kit ff = Trim Color: Black (BK), Bronze (BZ), Brushed Nickel (BN), Copper (CP)
ESL-WFR3-6-Tff	6-inch Wafer field installable trim kit ff = Trim Color: Black (BK), Bronze (BZ), Brushed Nickel (BN), Copper (CP)
ESL-WFR3-EXT-10FT	10 foot extension cord
ESL-WFR3-EXT-20FT	20 foot extension cord
ESL-RDL-4-RKIT-001	4", new construction pre-mounting plate
ESL-RDL-6-RKIT-001	6", new construction pre-mounting plate

### Catalog Data:

ITEM#	WATTAGE	SELECTABLE KELVIN	MAX LUMEN OUTPUT	MAX EFFICACY (lm/W)	INPUT VOLTAGE	DIMENSIONS
<b>3"</b> ESL-WFR-R3-6W-32750-WH	6W	2700K—3000K—3500K— 4000K—5000K	442	74	120 VAC	Ø3.62" x 0.84"
<b>4"</b> ESL-WFR-R4-9W-32750-WH	9W	2700K—3000K—3500K— 4000K—5000K	637	71	120 VAC	Ø4.92" x 0.90"
<b>6"</b> ESL-WFR-R6-12W-32750-WH	12W	2700K—3000K—3500K— 4000K—5000K	1,026	86	120 VAC	Ø6.88" x 0.92"

### Maximum Lumen Output based off of Selectable Kelvin:

ITEM#	WATTAGE	SELECTABLE KELVIN	MAX LUMEN OUTPUT
<b>3"</b> ESL-WFR-R3-6W-32750-WH	6W	2700K	375
		3000K	379
		3500K	414
		4000K	442
		5000K	383
<b>4"</b> ESL-WFR-R4-9W-32750-WH	9W	2700K	561
		3000K	594
		3500K	624
		4000K	637
		5000K	612
<b>6"</b> ESL-WFR-R6-12W-32750-WH	12W	2700K	913
		3000K	957
		3500K	1010
		4000K	1026
		5000K	1022

### Compatible Dimmers

LUTRON	
TG-600PR-WH	GT-600P
S-600PR-WH	DVCL-153P
CTCL-153PDH-WH	PD-6WCL
TGCL-153PH-LA	MACL-153M//MA-R
SLV-600P-AL	RNL06
DV-600PR-	MSCL-OP153M
SCL-153PH-WH	IPL06

LEVITON
6672
6674
DSL06
PD-6WCL
MACL-153M//MA-R

**Dimensions:**

