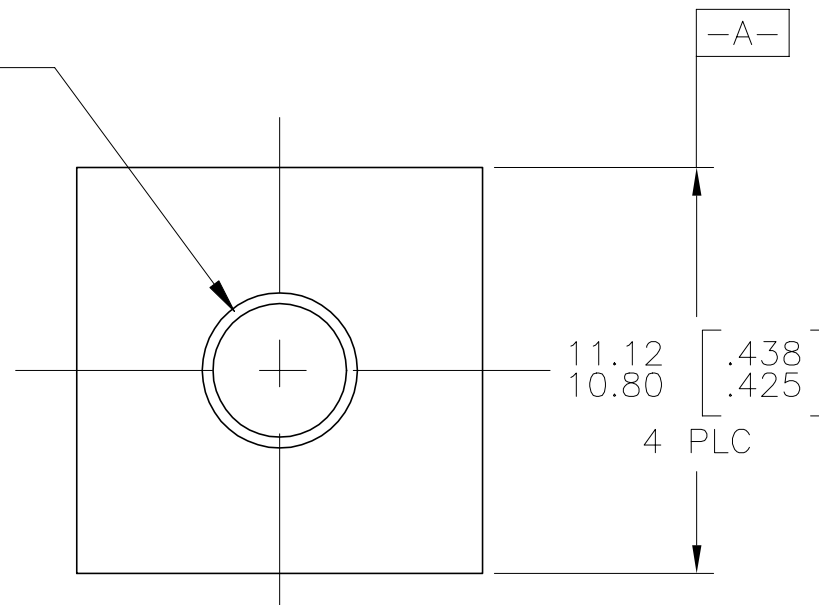


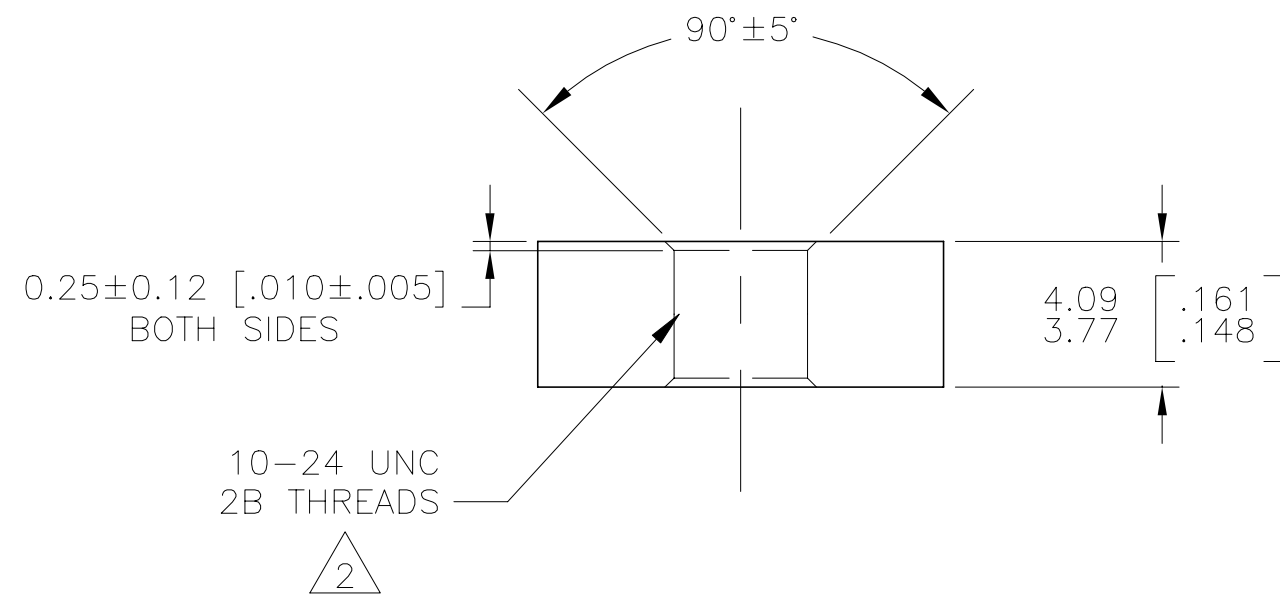
REVISIONS

P	LTR	DESCRIPTION	DATE	DWN	APVD
	A4	REVISED PER ECR-20-009600	06JUL20	LZ	EW

⊕ Ø0.30 [.012] Ⓢ AⓈ



- 1 PLATING: BRIGHT NICKEL 3.8 MICRONS [.000150] MIN.
- 2 THREAD GAGING AFTER PLATING
USE 10-24 UNC 2B FOR "GO"
USE P.D. OF 4.219 [.1661] FOR "NO GO"
HOLE DIA OF 3.962 [.1560] MAX
- 3 NUT MUST WITHSTAND 50 INCH LBS OF
MATING, SCREW TORQUE WITHOUT
DESTRUCTIVE DAMAGE.
- 4 MATERIAL: AISI 4130, 4037, 4135,
C10B21 OR EQUIVALENT.
- 5 RE-PACKAGE NUT #521624-1
1000 PER BOX PER PALI



1 NICKEL	5 521624-2
1 NICKEL	521624-1
FINISH	PART NO

THIS DRAWING IS A CONTROLLED DOCUMENT.		DWN	M.S. FEHER	19SEP2005	TE TE Connectivity												
DIMENSIONS: mm [INCHES]		CHK	D.F. DECKER	19SEP2005													
TOLERANCES UNLESS OTHERWISE SPECIFIED:		APVD	D.F. DECKER	19SEP2005													
<table border="0"> <tr><td>0 PLC</td><td>± -</td></tr> <tr><td>1 PLC</td><td>± -</td></tr> <tr><td>2 PLC</td><td>± 0.13 [.005]</td></tr> <tr><td>3 PLC</td><td>± -</td></tr> <tr><td>4 PLC</td><td>± -</td></tr> <tr><td>ANGLES</td><td>± 1°</td></tr> </table>		0 PLC	± -	1 PLC	± -	2 PLC	± 0.13 [.005]	3 PLC	± -	4 PLC	± -	ANGLES	± 1°	NAME		NUT FOR ASSEMBLY	
0 PLC	± -																
1 PLC	± -																
2 PLC	± 0.13 [.005]																
3 PLC	± -																
4 PLC	± -																
ANGLES	± 1°																
MATERIAL		PRODUCT SPEC		SIZE													
4 NICKEL		FINISH		CAGE CODE													
		NICKEL		DRAWING NO													
		WEIGHT		RESTRICTED TO													
		CUSTOMER DRAWING		A3 00779 C-521624													
		SCALE		SHEET													
		5:1		1 OF 1													
		REV		A4													