

key words:
liquid tight strain relief
cable gland
cord grip

Material:

- Polyamide
- Glass fiber reinforced

Characteristics:

- PG Thread
- Metric Thread

Temperature Range

-40 to 100°C
(-40 to 212°F)

External thread	Internal thread	SW mm	Thread length mm	Cat. No. Light Grey	Std. Pk.
PG 1					
Type A					
PG 9	PG 7	19	8	7005301	100
PG 11	PG 9	22	8	7005303	100
PG 13.5	PG 11	24	9	7005306	100
PG 16	PG 13.5	27	10	7005309	100
Type B					
PG 11	PG 7	22	8	7005302	100
PG 13.5	PG 7	24	9	7005304	100
PG 13.5	PG 9	24	9	7005305	100
PG 16	PG 9	27	10	7005307	100
PG 16	PG 11	27	10	7005308	100
PG 21	PG 11	32	11	7005310	100
PG 21	PG 13.5	32	11	7005311	100
PG 21	PG 16	32	11	7005312	100
PG 29	PG 13.5	40	11	7005313	50
PG 29	PG 16	40	11	7005314	50
PG 29	PG 21	40	11	7005315	50
PG 36	PG 16	50	13	7005316	50
PG 36	PG 21	50	13	7005317	50
PG 36	PG 29	50	18	7005318	50
PG 42	PG 21	55	18	7005319	25
PG 42	PG 29	55	18	7005320	25
PG 42	PG 36	55	18	7005321	25
PG 48	PG 29	60	18	7005322	25
PG 48	PG 36	60	14	7005323	25
PG 48	PG 42	60	17	7005324	25



Type B



Type A

External thread	Internal thread	SW mm	Thread length mm	Cat. No. Light Grey	Std. Pk.
Metric 1					
Metric 2					
M 16 x 1.5	M 12 x 1.5	20	8	7008516	50
M 20 x 1.5	M 12 x 1.5	24	8	7008519	50
M 20 x 1.5	M 16 x 1.5	24	9	7008520	50
M 25 x 1.5	M 12 x 1.5	29	8	7008523	50
M 25 x 1.5	M 16 x 1.5	29	8	7008524	50
M 25 x 1.5	M 20 x 1.5	30	10	7008525	20
M 32 x 1.5	M 16 x 1.5	36	10	7008530	50
M 32 x 1.5	M 20 x 1.5	36	10	7008531	50
M 32 x 1.5	M 25 x 1.5	36	11	7008532	20
M 40 x 1.5	M 20 x 1.5	46	10	7008538	50
M 40 x 1.5	M 25 x 1.5	46	10	7008539	20
M 40 x 1.5	M 32 x 1.5	44	12	7008540	20
M 50 x 1.5	M 25 x 1.5	55	12	7008548	20
M 50 x 1.5	M 32 x 1.5	55	12	7008549	20
M 50 x 1.5	M 40 x 1.5	55	13	7008550	10
M 63 x 1.5	M 32 x 1.5	68	12	7008561	20
M 63 x 1.5	M 40 x 1.5	68	12	7008562	20
M 63 x 1.5	M 50 x 1.5	70	15	7008563	5



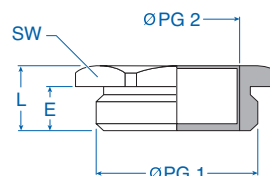
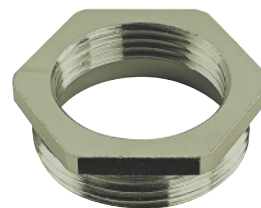
Material:

- Nickel-plated brass

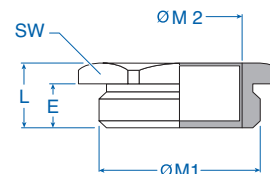
Characteristics:

- PG thread
- Metric thread
- Hexagon

External thread	Internal thread	SW mm	Thread length mm (E)	Complete length mm (L)	Cat. No.	Std. Pk.
PG 1	PG 2					
PG 9	PG 7	17	5	8	6102018	100
PG 11	PG 9	19	6	9	6102034	100
PG 11	PG 7	19	6	9	6102030	100
PG 13.5	PG 11	21	6	9	6102077	100
PG 13.5	PG 9	21	6	9	6102042	100
PG 13.5	PG 7	21	6	8.5	6102026	100
PG 16	PG 13.5	23	6	9	6102115	100
PG 16	PG 11	23	6	9	6102085	100
PG 16	PG 9	23	6	9	6102050	100
PG 21	PG 7	24	7	10	6102158	100
PG 21	PG 13.5	29	7	10	6102123	50
PG 21	PG 11	29	7	10	6102093	20
PG 21	PG 9	29	7	10	6102069	50
PG 29	PG 21	39	8	11	6102190	25
PG 29	PG 16	39	8	11	6102166	25
PG 29	PG 13.5	39	8	11	6102131	25
PG 29	PG 11	39	8	11	6102107	25
PG 36	PG 29	50	8	11	6102220	25
PG 36	PG 21	50	8	11	6102204	25
PG 36	PG 13.5	50	8	11	6102140	25
PG 42	PG 36	64	10	14	6102241	25
PG 42	PG 29	64	10	14	6102239	25
PG 48	PG 42	64	10	14	6102258	25
PG 48	PG 36	64	10	14	6102255	25
PG 48	PG 29	64	10	14	6102247	25
PG 48	PG 21	64	10	14	6102212	25
PG 48	PG 16	64	10	14	6102182	25


Metric 1
Metric 2

M 16 x 1.5	M 12 x 1.5	20	7	10	6102400	50
M 20 x 1.5	M 12 x 1.5	24	7	10	6102404	50
M 20 x 1.5	M 16 x 1.5	24	7	10	6102405	50
M 25 x 1.5	M 16 x 1.5	30	8	11.5	6102409	20
M 25 x 1.5	M 20 x 1.5	30	8	11.5	6102410	20
M 32 x 1.5	M 16 x 1.5	36	8.5	12.5	6102414	20
M 32 x 1.5	M 20 x 1.5	36	8.5	12.5	6102413	20
M 32 x 1.5	M 25 x 1.5	36	8.5	12.5	6102415	20
M 40 x 1.5	M 25 x 1.5	42	8.5	12.5	6102419	10
M 40 x 1.5	M 32 x 1.5	42	8.5	12.5	6102420	10
M 50 x 1.5	M 32 x 1.5	55	9.5	14.5	6102424	10
M 50 x 1.5	M 40 x 1.5	55	9.5	14.5	6102425	5
M 63 x 1.5	M 40 x 1.5	70	10.5	17.5	6102429	1
M 63 x 1.5	M 50 x 1.5	70	10.5	17.5	6102430	1
M 75 x 1.5	M 63 x 1.5	80	11.5	19.5	6102435	1


Material:

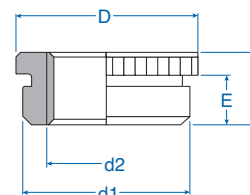
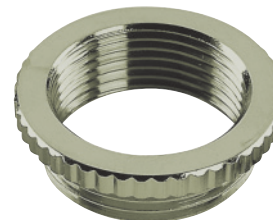
- Nickel-plated brass

Characteristics:

- PG/Metric external thread
- PG/Metric internal thread
- Round ribbed

Nickel-Plated Brass, Ribbed

External thread (d1)	Internal thread (d2)	Diameter mm (D)	Thread length mm (E)	Complete length mm (L)	Cat. No.	Std. Pk.
Metric	PG					
M 16 x 1.5	PG 7	20	6	9	6104716	100
M 20 x 1.5	PG 9	24	6.5	9.5	6104720	50
M 25 x 1.5	PG 11	30	7	10	6104725	50
M 25 x 1.5	PG 13.5	30	7	10	6104726	50
M 25 x 1.5	PG 16	30	7	10	6104727	50
M 32 x 1.5	PG 16	34	8	11.5	6104732	20
M 32 x 1.5	PG 21	34	8	11.5	6104733	20
M 40 x 1.5	PG 21	50	9	12	6104740	10
M 50 x 1.5	PG 29	57	9	12	6104750	5
M 63 x 1.5	PG 36	70	10.5	14.5	6104763	1
M 63 x 1.5	PG 42	70	10.5	14.5	6104764	1



Enlarger *Polyamide*

Material:

- Polyamide glass fiber reinforced

Characteristics:

- PG/Metric external thread
- PG/Metric internal thread

External thread	Internal thread	SW mm	Thread length mm	Complete length mm	Cat. No. Light Gray	Std. Pk.
PG 1	PG 2					
PG 7	PG 9	19	7	20	7004200	100
PG 9	PG 11	22	8	23	7004201	100
PG 11	PG 13.5	24	8	23	7004202	100
PG 13.5	PG 16	27	9	26	7004203	100
PG 16	PG 21	32	9	29	7004204	100
PG 21	PG 29	42	10	32	7004205	50
PG 29	PG 36	53	11	35.5	7004206	25
PG 36	PG 42	60	13	40.5	7004207	10
PG 42	PG 48	65	13	41	7004208	10
Metric 1	Metric 2					
M12 x 1.5	M16 x 1.5	20	8	18.5	7004300	50
M16 x 1.5	M20 x 1.5	24	8	20	7004301	50
M20 x 1.5	M25 x 1.5	30	9	22	7004302	50
M25 x 1.5	M32 x 1.5	36	10	24	7004303	20
M32 x 1.5	M40 x 1.5	44	11	26	7004304	20
M40 x 1.5	M50 x 1.5	55	12	28	7004305	20
M50 x 1.5	M63 x 1.5	70	13	31.5	7004306	10



Temperature Range
 -30 to 100°C
 (-22 to 212°F)

Material:

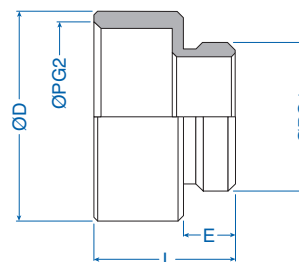
- Nickel-plated brass

Characteristics:

- PG external thread
- PG internal thread
- Round

According to DIN 259 and formerly by DIN 46320

External thread	Internal thread	Diameter mm (D)	Thread length mm (E)	Complete length mm (L)	Cat. No.	Std. Pk.
PG 1	PG 2					
PG 7	PG 9	17	5	15	6200010	50
PG 9	PG 11	20	6	16.5	6200028	50
PG 9	PG 13.5	22	6	17.5	6200036	50
PG 11	PG 13.5	22	6	17.5	6200044	50
PG 11	PG 16	24	6	18.5	6200052	25
PG 13.5	PG 16	24	6.5	19	6200060	25
PG 13.5	PG 21	30	6.5	21	6200079	20
PG 16	PG 21	30	6.5	21	6200087	20
PG 21	PG 29	39	7	23	6200095	15
PG 29	PG 36	50	8	28	6200109	10
PG 36	PG 42	57	9	31	6200117	10
PG 42	PG 48	64	10	33	6200125	10

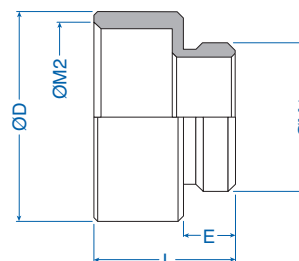

Material:

- Nickel-plated brass

Characteristics:

- Metric external thread
- Metric internal thread
- Round

External thread	Internal thread	Diameter mm (D)	Thread length mm (E)	Complete length mm (L)	Cat. No.	Std. Pk.
Metric 1	Metric 2					
M 12 x 1.5	M 16 x 1.5	18	5	15	6200212	50
M 16 x 1.5	M 20 x 1.5	22	6	17.5	6200216	50
M 20 x 1.5	M 25 x 1.5	27	6.5	19	6200220	50
M 25 x 1.5	M 32 x 1.5	34	8	20.5	6200225	20
M 32 x 1.5	M 40 x 1.5	42	7	23	6200232	20
M 40 x 1.5	M 50 x 1.5	53	9	31	6200240	10
M 50 x 1.5	M 63 x 1.5	65	9.5	24	6200250	5
M 63 x 1.5	M 75 x 1.5	80	10.5	26	6200263	1

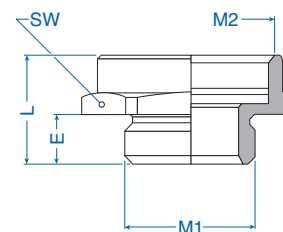

Material:

- Nickel-plated brass

Characteristics:

- Metric external thread
- Metric internal thread
- Hexagon

External thread	Internal thread	SW mm	Thread length mm (E)	Complete length mm (L)	Cat. No.	Std. Pk.
Metric 1	Metric 2					
M12 x 1.5	M16 x 1.5	19	7	19	6200312	50
M16 x 1.5	M20 x 1.5	22	7	19	6200316	50
M20 x 1.5	M25 x 1.5	28	7	20	6200320	50
M25 x 1.5	M32 x 1.5	36	8	21.5	6200325	20
M32 x 1.5	M40 x 1.5	42	8.5	22	6200332	20
M40 x 1.5	M50 x 1.5	52	8.5	23	6200340	10
M50 x 1.5	M63 x 1.5	65	9.5	25	6200350	5
M63 x 1.5	M75 x 1.5	80	10.5	27.5	6200363	1



Adapter *Nickel-Plated Brass*

Material:
• Nickel-plated brass

Characteristics:
• PG external thread
• Metric internal thread
• Hexagon

External thread	Internal thread	SW mm	Thread length mm	Complete length mm	Cat. No.	Std. Pk.
PG Form A						
PG 7	M 12 x 1.5	17	6.5	16.5	6604807	50
PG 7	M 16 x 1.5	19	6.5	16.5	6604808	50
PG 9	M 16 x 1.5	19	6.5	16.5	6604810	50
PG 9	M 20 x 1.5	22	6.5	18.5	6604811	50
PG 11	M 20 x 1.5	22	7	17	6604813	50
PG 11	M 25 x 1.5	27	7	18	6604814	50
PG 13.5	M 20 x 1.5	24	7	17	6604816	50
PG 13.5	M 25 x 1.5	27	7	18	6604817	50
PG 16	M 20 x 1.5	27	7	16	6604818	50
PG 16	M 25 x 1.5	27	7	18	6604819	50
PG 16	M 32 x 1.5	36	7	18.5	6604820	50
PG 21	M 32 x 1.5	36	8	19.5	6604822	20
PG 21	M 40 x 1.5	42	8	19.5	6604823	20
PG 29	M 40 x 1.5	42	8.5	20	6604831	20
PG 29	M 50 x 1.5	55	8.5	21	6604832	20
PG 36	M 50 x 1.5	55	8.5	21	6604837	10
PG 42	M 63 x 1.5	65	10	23.5	6604843	5
PG 48	M 63 x 1.5	65	10	24.5	6604849	5
PG 48	M 75 x 1.5	80	10	24.5	6604850	5
Form B						
PG 9	M 12 x 1.5	19	6.5	10	6604809	50
PG 11	M 16 x 1.5	22	7	11	6604812	50
PG 13.5	M 16 x 1.5	24	7	11	6604815	50
PG 21	M 25 x 1.5	32	8	13	6604821	20
PG 29	M 25 x 1.5	40	8.5	14	6604829	20
PG 29	M 32 x 1.5	40	8.5	14	6604830	20
PG 36	M 40 x 1.5	55	8.5	15	6604836	10
PG 42	M 50 x 1.5	58	10	16.5	6604842	5
PG 48	M 50 x 1.5	65	10	17	6604848	5



Form A



Form B

Material:

- Nickel-plated brass

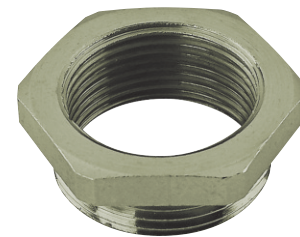
Characteristics:

- Metric external thread
- PG internal thread
- Hexagon

External thread	Internal thread	SW mm	Thread length mm	Complete length mm	Cat. No.	Std. Pk.
Metric Form A						
M 12 x 1.5	PG 7	14	7	17	6604712	100
M 16 x 1.5	PG 9	18	7	17.5	6604716	50
M 16 x 1.5	PG 11	20	7	18	6604715	50
M 16 x 1.5	PG 13.5	22	7	19.5	6604709	50
M 20 x 1.5	PG 11	22	7	18	6604720	50
M 20 x 1.5	PG 13.5	22	7	19.5	6604721	50
M 20 x 1.5	PG 16	24	7	20.5	6604722	50
M 20 x 1.5	PG 21	32	7	22.5	6604708	50
M 25 x 1.5	PG 16	27	8	21.5	6604726	50
M 25 x 1.5	PG 21	32	8	23.0	6604725	50
M 25 x 1.5	PG 29	40	8	25	6604727	20
M 32 x 1.5	PG 21	34	8.5	23.5	6604729	20
M 32 x 1.5	PG 29	40	8.5	25.0	6604732	10
M 50 x 1.5	PG 36	52	9.5	29	6604742	10
M 50 x 1.5	PG 42	58	9.5	31.5	6604750	5
M 63 x 1.5	PG 48	65	10.5	32.5	6604763	1
Form B						
M 20 x 1.5	PG 9	22	7	11	6604719	50
M 25 x 1.5	PG 13.5	27	8	12	6604724	50
M 32 x 1.5	PG 13.5	34	8.5	12.5	6604706	20
M 32 x 1.5	PG 16	34	8.5	12.5	6604728	20
M 32 x 1.5	PG 21	34	8.5	12.5	6604730	20
M 40 x 1.5	PG 16	42	8.5	13.5	6604705	10
M 40 x 1.5	PG 21	42	8.5	13.5	6604733	10
M 40 x 1.5	PG 29	42	8.5	13.5	6604735	20
M 50 x 1.5	PG 21	52	9.5	15.5	6604704	10



Form A



Form B

Adapter *Nickel-Plated Brass*

Material:

- Nickel-Plated Brass

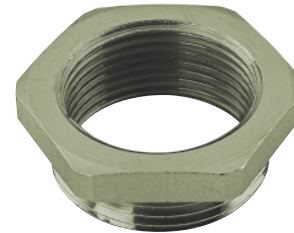
Characteristics:

- PG/Metric external thread
- NPT internal thread
- Hexagon

External thread	Internal thread	SW mm	Thread length mm	Complete length mm	Cat. No.	Std. Pk.
PG Form A						
PG 7	NPT 3/8"	19	5	19.5	6400400	50
PG 9	NPT 1/2"	24	6	24	6400401	50
PG 11	NPT 1/2"	24	6	24	6400402	50
PG 13.5	NPT 1/2"	24	6.5	24.5	6400403	50
PG 13.5	NPT 3/4"	30	6.5	25	6400404	50
PG 16	NPT 1/2"	24	6.5	24.5	6400405	50
PG 16	NPT 3/4"	30	6.5	25	6400406	50
PG 21	NPT 3/4"	30	7	23	6400407	20
PG 21	NPT 1"	36	7	30	6400408	20
PG 29	NPT 1 1/4"	50	8	32	6400410	20
PG 36	NPT 1 1/2"	55	9	34	6400412	10
PG 48	NPT 2"	64	10	35	6400415	5
Form B						
PG 29	NPT 1"	40	8	18	6400409	20
PG 36	NPT 1 1/4"	50	9	18.5	6400411	10
PG 42	NPT 1 1/2"	60	10	19.5	6400413	5
PG 48	NPT 1 1/2"	64	10	19.5	6400414	5
Metric Form A						
M16 x 1.5	NPT 3/8"	19	7	21.5	6402316	50
M16 x 1.5	NPT 1/2"	24	7	25	6402317	50
M20 x 1.5	NPT 1/2"	24	7	25	6402321	50
M25 x 1.5	NPT 3/4"	30	8	27	6402326	20
M32 x 1.5	NPT 1"	36	8.5	31	6402333	10
Form B						
M20 x 1.5	NPT 3/8"	24	7	13	6402320	50
M25 x 1.5	NPT 1/2"	30	8	15	6402325	20
M32 x 1.5	NPT 3/4"	36	8.5	15.5	6402332	10



Form A



Form B

Material:

- Nickel-plated brass

Characteristics:

- NPT external thread
- PG or M internal thread
- Hexagon

External Thread	Internal Thread	SW mm	Thread Length mm (E)	Complete Length mm (L)	Cat. No.	Std. Pk.
NPT	PG					
3/8"	PG 7	19.0	15.0	20.0	6402020	50
1/2"	PG 9	22.0	20.0	25.0	6402038	50
1/2"	PG 11	22.0	20.0	28.0	6402046	50
1/2"	PG 13.5	24.0	20.0	30.0	6402054	50
1/2"	PG 16	24.0	20.0	30.0	6402055	50
3/4"	PG 11	29.0	20.0	30.0	6402060	50
3/4"	PG 13.5	29.0	20.0	30.0	6402062	50
3/4"	PG 16	29.0	20.0	30.0	6402070	50
3/4"	PG 21	32.0	20.0	32.0	6402072	50
1"	PG 16	36.0	25.0	35.0	6402087	20
1"	PG 21	36.0	25.0	35.0	6402089	20
1"	PG 29	42.0	25.0	38.0	6402091	20
1 1/4"	PG 29	46.0	25.0	35.0	6402097	20
1 1/4"	PG 36	50.0	25.0	42.0	6402099	10
1 1/2"	PG 36	52.0	26.0	42.0	6402100	10
1 1/2"	PG 48	65.0	26.0	49.0	6402102	5
2"	PG 48	65.0	27.0	50.0	6402119	5
NPT	Metric					
3/8"	M 20	23.0	15.0	26.0	6402214	50
3/8"	M 25	28.0	15.0	27.0	6402215	50
1/2"	M 20	23.0	20.0	30.0	6402216	50
1/2"	M 25	28.0	20.0	32.0	6402217	50
1"	M 20	36.0	25.0	31.0	6402218	20
1"	M 25	36.0	25.0	31.0	6402219	20

