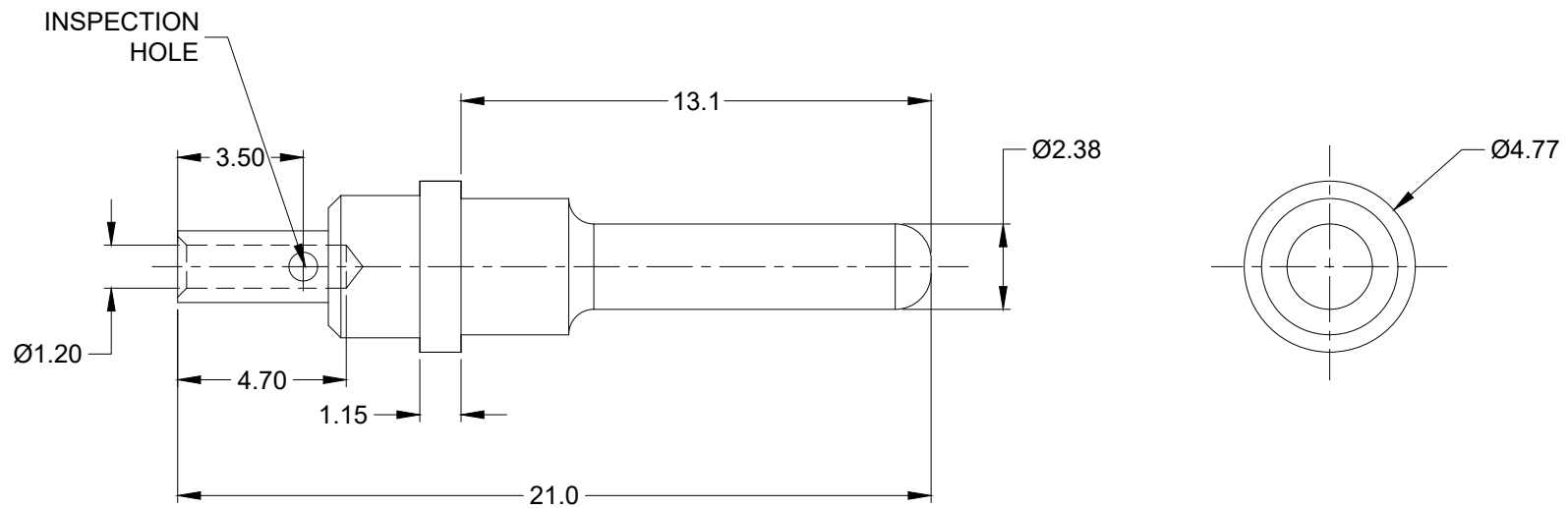


REVISIONS					
REV	ECO	DESCRIPTION	DATE	BY	APPR
A3	--	RELEASE NEW FORMAT	25APR19	ORION	TOMMY



NOTES: UNLESS OTHERWISE SPECIFIED

- MATERIAL: COPPER ALLOY; GOLD PLATED
- CONTACT SIZE: 12
- SPECIFICATIONS:
  - CURRENT RATING: 25 AMP
  - CONTACT MILLIVOLT DROP: 60 MILLIVOLT DROP @ 25 AMP TEST CURRENT.
  - ROHS COMPLIANT
- RECOMMENDED WIRE RANGE: 18 - 20 AWG
- AVAILABLE HAND CRIMPER: CA-5D12
- ALL DIMENSIONS ARE FOR REFERENCE USE ONLY

		65-54749				
		PART NUMBER			DESCRIPTION	ITEM
QUANTITY	MATERIALS LIST					
UNLESS OTHERWISE SPECIFIED 1) All dimensions are in metric(mm). 2) Tolerances are as follows: 1 PL DEC ±0.30 2 PL DEC ±0.15 3 PL DEC ±0.08 3) Note reference =		SIGNATURES		DATE		
		DRAWN: ORION LI		25APR19		
		CHECKED:				
		ENGINEER:				
		APPROVAL: TOMMY XIE		25APR19		
		CUSTOMER:				
MATERIAL SPECIFICATIONS:		THIS DRAWING IS SUPPLIED FOR INFORMATION ONLY. DESIGN FEATURES, SPECIFICATIONS AND PERFORMANCE DATA SHOWN HEREON ARE THE PROPERTY OF THE AMPHENOL CORPORATION. NO RIGHTS OF REPRODUCTION ARE IMPLIED. ALL DIMENSIONS ARE SUBJECT TO NORMAL MANUFACTURING VARIATIONS.		<h1 style="text-align: center;">Amphenol</h1> <p style="text-align: center;">Sine Systems - www.amphenol-sine.com 44724 Morley Drive Clinton Township, MI 48036</p> <p style="text-align: center;">CONTACT, PIN, SOLID, SIZE 12, 18-20 AWG, ATP &amp; AHD-6 SERIES</p>		
PROCESS SPECIFICATIONS:						
NEXT ASSY:		SIZE	TYPE	DWG NO:	REVISION	
		A	C-	65-54749	A3	
		SCALE: NONE			SHEET 1 OF 1	