



ISL Products International

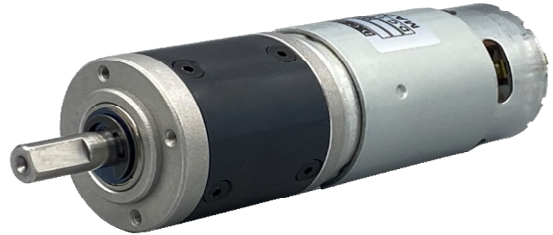
ø38mm Planetary Gear Motor
Carbon - Brushed
MOT-I-81413-27

Online ID#:

PGM-38P-12-27-741-C

Our Planetary Gear Motors are an inline solution providing excellent torque output at various speeds. They are best for intermittent duty operation. With endless performance combinations, we have a fully tailored gear motor solution for you.

Contact Us for alternative solutions!

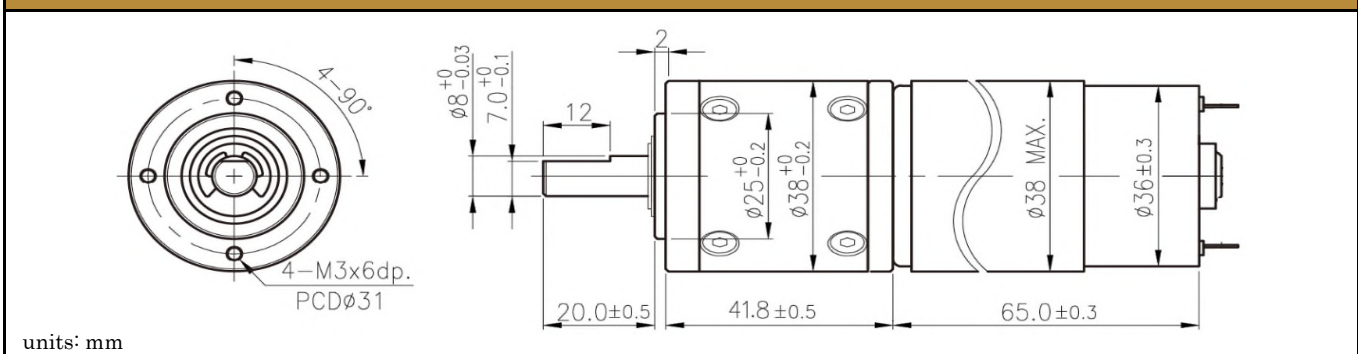


Specifications

Gearhead Type:	Planetary	No-Load Speed:	740 rpm (+/- 10%)
Motor Type:	Carbon - Brushed	No-Load Current:	< 2 A
Rated Voltage:	12V DC	Stall Torque:	* 115 kg.cm
Rated Speed:	647 rpm	Max. Power:	218 W
Rated Torque:	14 kg.cm	Reduction Ratio:	27:1
Rated Current:	15.5 A	Termination Style:	Terminals

* Gearbox limitations are set at 50 kg.cm, operating past this torque limit may create premature failure.

Dimensions



Performance Curve

