

# CUC-MP-J1ST-A/2R4LT-THR - RJ45 PCB connectors

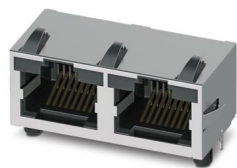


1337251

<https://www.phoenixcontact.com/us/products/1337251>

Please be informed that the data shown in this PDF document is generated from our online catalog. Please find the complete data in the user documentation. Our general terms of use for downloads are valid.

RJ45 PCB connectors, degree of protection: IP20, number of positions: 8, 10 Gbps, material: Metal, connection method: THR reflow/THT wave



## Your advantages

- The right version for every application. Available with and without LED, single- and multi-port
- The reflow capability enables efficient, cost-optimized processing
- High standoffs allow ideal thermal airflow during processing
- Tape-on-reel packaging is perfect for automated processing
- The extended temperature range from -50°C to +85°C enables use in demanding applications
- Through-hole technology (THT) provides high mechanical stability when connecting the female connector to the PCB

## Commercial data

Item number	1337251
Packing unit	100 pc
Minimum order quantity	100 pc
Sales key	AB12
Product key	ABNADA
GTIN	4063151638399
Weight per piece (including packing)	10.28 g
Weight per piece (excluding packing)	10.28 g
Customs tariff number	85366930
Country of origin	CN

1337251

<https://www.phoenixcontact.com/us/products/1337251>

## Technical data

### Product properties

Product type	Data connector (device side)
Type	RJ45
Number of positions	8
Connection profile	RJ45
Type of packaging	Tape and Reel
[W] tape width	56.00 mm
[A] coil diameter	330.00 mm
[W2] coil overall dimension	61.10 mm
Housing shield springs	Yes
Number of slots	2
Type	Socket
Shielded	yes

### Insulation characteristics

Overvoltage category	I
Degree of pollution	2

### Electrical properties

Rated voltage (III/2)	72 V DC
Rated surge voltage	1.5 kV DC
Rated surge voltage (III/3)	1.5 kV
Rated surge voltage	1 kV DC
Rated current	1.5 A
Frequency range	10 Hz ... 500 Hz
Insulation resistance	> 500 MΩ
Test voltage	1 kV DC
Test voltage Core/Core	1 kV DC
Test voltage Core/Shield	1.50 kV DC
Transmission medium	Copper
Transmission speed	10 Gbps
Power transmission	PoE++

### Connection data

#### Connection technology

Connection method	THR reflow/THT wave
-------------------	---------------------

### Dimensions

Width	35.5 mm
Height	18.2 mm
Length	15.9 mm

# CUC-MP-J1ST-A/2R4LT-THR - RJ45 PCB connectors



1337251

<https://www.phoenixcontact.com/us/products/1337251>

Installed height	13.60 mm
Orientation to	90.00 °
Data pin length	2.00 mm

## Material specifications

Material	Au (1,27 µm/50 µ")
	Sn (2.54 µm/100 µ")
	Ni (1,27 µm/50 µ")
	Ni (1.27 µm / 50 µ")
	Stainless steel
	LCP
Flammability rating according to UL 94	V0
Housing material	Metal
Contact material	Phosphor bronze
Contact surface material	Gold over nickel
Contact carrier material	LCP

## Cable/line

Test voltage Core/Core	1 kV DC
Test voltage Core/Shield	1.50 kV DC
Halogen-free	yes

## Mechanical properties

### Mechanical data

Insertion/withdrawal cycles	> 750
Insertion force per signal contact	< 20.00 N
Extraction force per signal contact	< 20 N

## Environmental and real-life conditions

### Test specification

Frequency	10-500 Hz
Sweep speed	1 octave/min
Amplitude	0.35 mm
Acceleration	50.00 m/s <sup>2</sup>
Test duration	20.00 s

### Test specification

Specification	IEC60068-2-27
Acceleration	295.00 m/s <sup>2</sup>

### Ambient conditions

Degree of protection	IP20
Ambient temperature (operation)	-50 °C ... 85 °C
Ambient temperature (storage/transport)	-50 °C ... 85 °C

# CUC-MP-J1ST-A/2R4LT-THR - RJ45 PCB connectors



1337251

<https://www.phoenixcontact.com/us/products/1337251>

## Mounting

Mounting type	PCB mounting
---------------	--------------

## Processing notes

Process	THR
Moisture Sensitive Level	MSL 1
Classification temperature T <sub>c</sub>	260 °C
Solder cycles in the reflow	3

# CUC-MP-J1ST-A/2R4LT-THR - RJ45 PCB connectors



1337251

<https://www.phoenixcontact.com/us/products/1337251>

## Approvals

To download certificates, visit the product detail page: <https://www.phoenixcontact.com/us/products/1337251>



**UL Recognized**

Approval ID: FILE E 335024

# CUC-MP-J1ST-A/2R4LT-THR - RJ45 PCB connectors



1337251

<https://www.phoenixcontact.com/us/products/1337251>

## Classifications

### ECLASS

ECLASS-11.0	27440390
ECLASS-12.0	27440390
ECLASS-13.0	27460201

### UNSPSC

UNSPSC 21.0	39121400
-------------	----------

Environmental product compliance

EU RoHS	
Fulfills EU RoHS substance requirements	Yes, No exemptions
China RoHS	
Environment friendly use period (EFUP)	EFUP-E
	No hazardous substances above the limits
EU REACH SVHC	
REACH candidate substance (CAS No.)	No substance above 0.1 wt%

1337251

<https://www.phoenixcontact.com/us/products/1337251>

## Accessories

### VS-08-RJ45-10G/Q - RJ45 connector

1419001

<https://www.phoenixcontact.com/us/products/1419001>



RJ45 connector, design: RJ45, degree of protection: IP20, number of positions: 8, 10 Gbps, CAT6<sub>A</sub>, material: Plastic, connection method: Insulation displacement connection, connection cross section: AWG 26- 24, cable outlet: straight, color: black, Ethernet

---

### VS-08-RJ45-5-Q/IP20 - RJ45 connector

1656725

<https://www.phoenixcontact.com/us/products/1656725>



RJ45 connector, design: RJ45, degree of protection: IP20, number of positions: 8, 1 Gbps, CAT5, material: Plastic, connection method: Insulation displacement connection, connection cross section: AWG 26- 23, cable outlet: straight, color: traffic grey A RAL 7042, Ethernet



# CUC-MP-J1ST-A/2R4LT-THR - RJ45 PCB connectors



1337251

<https://www.phoenixcontact.com/us/products/1337251>

## VS-08-RJ45-5-Q/IP20 BK - RJ45 connector

1658008

<https://www.phoenixcontact.com/us/products/1658008>



RJ45 connector, design: RJ45, degree of protection: IP20, number of positions: 8, 1 Gbps, CAT5, material: Plastic, connection method: Insulation displacement connection, connection cross section: AWG 26- 23, cable outlet: straight, color: black, Ethernet

---

## VS-PN-RJ45-5-Q/IP20 - RJ45 connector

1658435

<https://www.phoenixcontact.com/us/products/1658435>



RJ45 connector, design: RJ45, degree of protection: IP20, number of positions: 4, 100 Mbps, CAT5, material: Plastic, connection method: Insulation displacement connection, cable outlet: straight, color: traffic grey A RAL 7042, PROFINET

# CUC-MP-J1ST-A/2R4LT-THR - RJ45 PCB connectors



1337251

<https://www.phoenixcontact.com/us/products/1337251>

## CUC-IND-C1ZNI-S/R4IP10G8 - RJ45 connector

1149847

<https://www.phoenixcontact.com/us/products/1149847>



RJ45 connector, design: RJ45, degree of protection: IP20, number of positions: 8, 10 Gbps, CAT6<sub>A</sub>, material: Metal, connection method: Insulation displacement connection, connection cross section: AWG 23- 22, cable outlet: straight, color: yellow, Ethernet

---

## CUC-IND-C1ZNI-S/R4IE10G8 - RJ45 connector

1149846

<https://www.phoenixcontact.com/us/products/1149846>



RJ45 connector, design: RJ45, degree of protection: IP20, number of positions: 8, 10 Gbps, CAT6<sub>A</sub>, material: Metal, connection method: Insulation displacement connection, connection cross section: AWG 26- 24, cable outlet: straight, color: yellow, Ethernet

# CUC-MP-J1ST-A/2R4LT-THR - RJ45 PCB connectors



1337251

<https://www.phoenixcontact.com/us/products/1337251>

## CUC-IND-C1ZNI-S/R4IP8 - RJ45 connector

1421126

<https://www.phoenixcontact.com/us/products/1421126>



RJ45 connector, design: RJ45, degree of protection: IP20, number of positions: 8, 1 Gbps, CAT5, material: Metal, connection method: Insulation displacement connection, connection cross section: AWG 23- 22, cable outlet: straight, color: green, Ethernet/PROFINET

---

## CUC-IND-C1ZNI-S/R4IE8 - RJ45 connector

1421607

<https://www.phoenixcontact.com/us/products/1421607>



RJ45 connector, design: RJ45, degree of protection: IP20, number of positions: 8, 1 Gbps, CAT5, material: Metal, connection method: Insulation displacement connection, connection cross section: AWG 26- 24, cable outlet: straight, color: green, Ethernet

# CUC-MP-J1ST-A/2R4LT-THR - RJ45 PCB connectors



1337251

<https://www.phoenixcontact.com/us/products/1337251>

## CUC-IND-C1ZNI-B/R4IP8 - RJ45 connector

1421127

<https://www.phoenixcontact.com/us/products/1421127>



RJ45 connector, design: RJ45, degree of protection: IP20, number of positions: 8, 1 Gbps, CAT5, material: Metal, connection method: Insulation displacement connection, connection cross section: AWG 23- 22, cable outlet: angled, Ethernet/PROFINET

---

## CUC-IND-C1ZNI-B/R4IE8 - RJ45 connector

1421876

<https://www.phoenixcontact.com/us/products/1421876>



RJ45 connector, design: RJ45, degree of protection: IP20, number of positions: 8, 1 Gbps, CAT5, material: Metal, connection method: Insulation displacement connection, connection cross section: AWG 26- 24, cable outlet: angled, Ethernet

# CUC-MP-J1ST-A/2R4LT-THR - RJ45 PCB connectors



1337251

<https://www.phoenixcontact.com/us/products/1337251>

## CUC-IND-C1ZNI-T/R4IP8 - RJ45 connector

1421128

<https://www.phoenixcontact.com/us/products/1421128>



RJ45 connector, design: RJ45, degree of protection: IP20, number of positions: 8, 1 Gbps, CAT5, material: Metal, connection method: Insulation displacement connection, connection cross section: AWG 23- 22, cable outlet: angled, Ethernet/PROFINET

---

## CUC-IND-C1ZNI-T/R4IE8 - RJ45 connector

1421877

<https://www.phoenixcontact.com/us/products/1421877>



RJ45 connector, design: RJ45, degree of protection: IP20, number of positions: 8, 1 Gbps, CAT5, material: Metal, connection method: Insulation displacement connection, connection cross section: AWG 26- 24, cable outlet: angled, Ethernet

---

Phoenix Contact 2024 © - all rights reserved  
<https://www.phoenixcontact.com>

Phoenix Contact USA  
586 Fulling Mill Road  
Middletown, PA 17057, United States  
(+717) 944-1300  
[info@phoenixcon.com](mailto:info@phoenixcon.com)