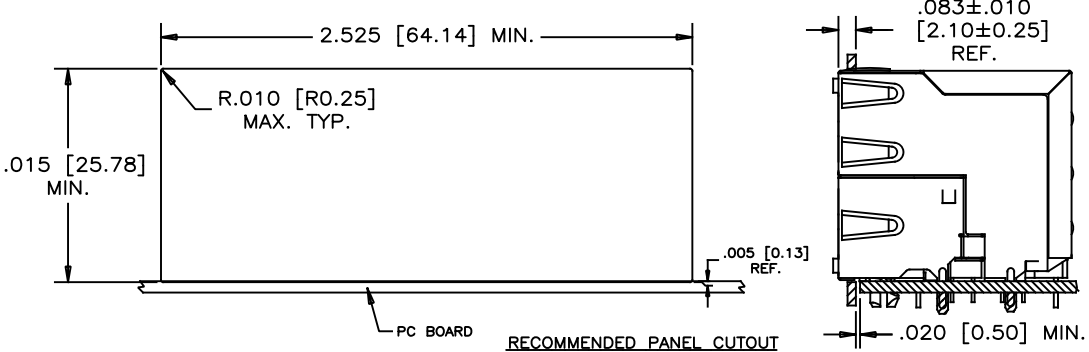
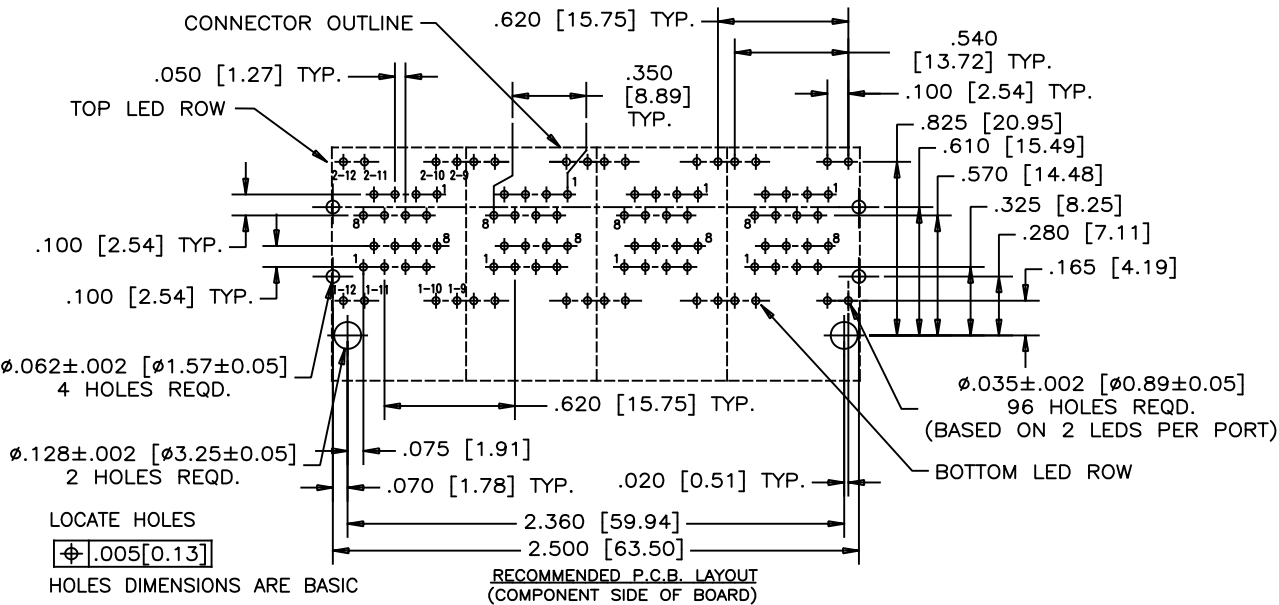
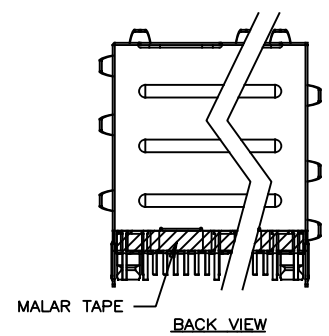
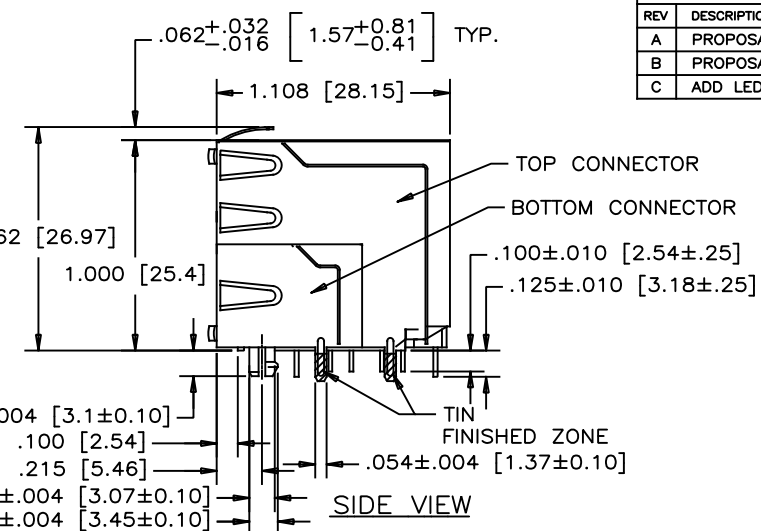
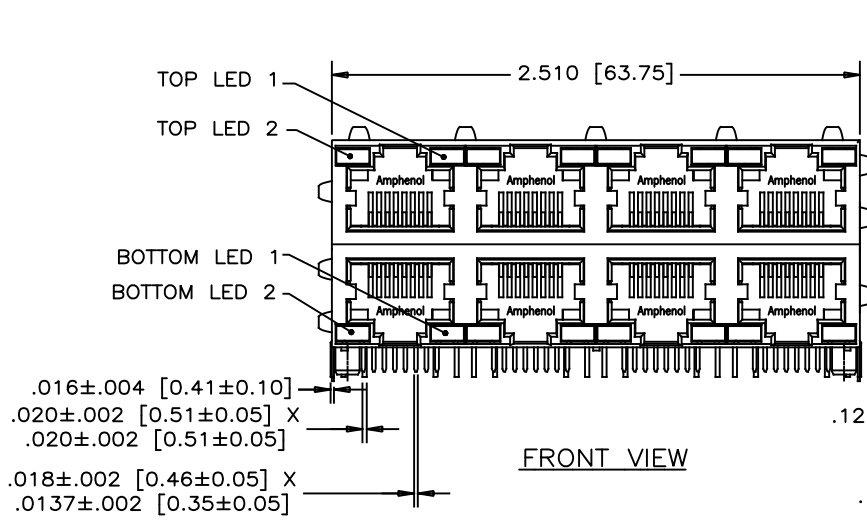


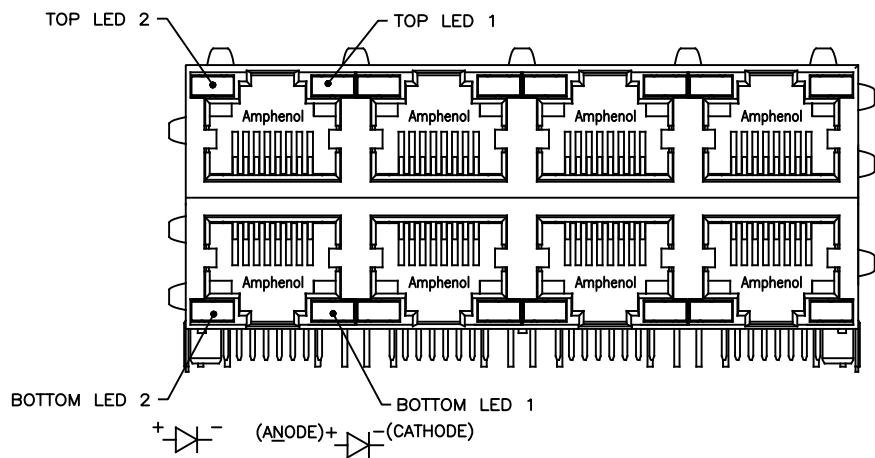
REVISIONS			
REV	DESCRIPTION, ECN, EAR NO.	DATE	APP'D
A	PROPOSAL DRAWING	JUN02/18	L.CHAN
B	PROPOSAL DRAWING	JAN21/20	L.CHAN
C	ADD LED INFORMATION	AUG28/20	L.CHAN



**MATERIALS:**  
HOUSING: ENGINEERING THERMOPLASTIC. FLAMMABILITY RATING UL 94V-0  
CONTACTS: PHOSPHOR BRONZE  
PLATING: SELECTIVE GOLD PLATING ON MATING SURFACES. SEE PART NO. FOR THICKNESS. 50μ" [1.27 MICRONS] MIN. NICKEL UNDERPLATE. 100μ" [2.54 MICRONS] MIN. MATTE TIN OR GOLD FLASH ON CONTACT TAILS.  
SHIELD: COPPER ALLOY  
PLATING: NICKEL WITH TIN FINISHED PCB TAIL.  
RECOMMENDED SOLDERING TEMPERATURE: WAVE SOLDERING AT 260°C MAXIMUM FOR 5~8 SECONDS.

AMPHENOL PART NUMBER: RJSAE-X38X-08X  
GOLD PLATING OPTION:  
D=6u" GOLD PLATING  
G=15u" GOLD PLATING  
J=30u" GOLD PLATING  
5=50u" GOLD PLATING  
REFER TO LED OPTIONS DRAWING FOR ORDERING CODES

UNLESS SPECIFIED OTHERWISE		DRAWN	HANSON.C	JUN02/18	Amphenol Canada Corp. Commercial Products	
PRIMARY UNITS	INCHES	CHECKED	AMY.Z	JUN02/18		
SECONDARY	MILLIMETERS	M.E. APP'D				
REFERENCE IN PARENTHESES		Q.A. APP'D				
		DWG APP'D				
1 DECIMAL PLACE		ENG. REL. NO.			DWG NO.	P-RJSAE-X38X-08X
2 DECIMAL PLACES		REF.				
3 DECIMAL PLACES ±0.015		THIRD ANGLE PROJECTION				
ANGULAR DEGREES ±1.5°		DO NOT SCALE DRAWING				
					CODE ID NO. 03554	DWG SIZE
					SCALE	SHEET 1 OF 2



EXAMPLE:1  
PART NUMBER RJSAE-538X-08

STANDARD LED COLOR CODE

EXAMPLE:2  
PART NUMBER RJSAE-538U-08-XX

BOTTOM ASSY LED (SAME AS STANDARD CODE)  
TOP ASSY LED (SAME AS STANDARD CODE)

SPECIAL CODE FOR TOP & BOTTOM LEDS CONFIGURATION

STANDARD LED COLOR CODE:

CODE	LED 2 (LEFT)	LED 1 (RIGHT)	CODE	LED 2 (LEFT)	LED 1 (RIGHT)	CODE	LED 2 (LEFT)	LED 1 (RIGHT)
0	BLOCKED	BLOCKED	9	GREEN	BLOCKED	J	BiC RD/GR	YELLOW
1	YELLOW	GREEN	A	BiC GR/YE	BiC GR/YE	K	YELLOW	BiC GR/OR
2	BLOCKED	GREEN	B	BiC RD/GR	BiC RD/GR	L	BiC GR/YE	RED
3	YELLOW	BLOCKED	C	BiC RD/GR	BiC GR/YE	M	RED	YELLOW
4	GREEN	YELLOW	D	GREEN	BiC GR/YE	N	BiC GR/RD	BiC GR/YE
5	GREEN	GREEN	E	YELLOW	BiC GR/YE	P	GREEN	BiC RD/GR
6	YELLOW	YELLOW	F	BiC GR/YE	YELLOW	R	BiC GR/OR	GREEN
7	RED	GREEN	G	BiC GR/OR	BiC GR/OR	T	RED	RED
8	GREEN	RED	H	BiC GR/YE	GREEN	V	BiC RD/GR	GREEN
			W	ADDITIONAL OPTIONS				
			U	SPECIAL CODE FOR TOP & BOTTOM LEDS CONFIGURATION				

EXAMPLE:3  
PART NUMBER RJSAE-538W-08X

ADDITIONAL LED COLOR CODE

—DENOTES ADDITIONAL LED OPTIONS TO BE USED

ADDITIONAL LED COLOR CODE:

CODE	LED 2 (LEFT)	LED 1 (RIGHT)	CODE	LED 2 (LEFT)	LED 1 (RIGHT)	CODE	LED 2 (LEFT)	LED 1 (RIGHT)
0	DO NOT USE		5	BLOCKED	YELLOW	A	LOWC YE	LOWC YE
1	RED	BLOCKED	6	RED	BiC RD/GR	B	LOWC YE	LOWC GR
2	BiC GR/OR	YELLOW	7	BLOCKED	BiC RD/GR	C	LOWC GR	LOWC YE
3	YELLOW	RED	8	BiC RD/GR	BLOCKED	D	LOWC GR	LOWC GR
4	BLOCKED	RED	9	BiC GR/YE	BLOCKED	M	LOWC RD	LOWC YE
			N	GREEN	BiC GR/OR	E	GREEN	ORANGE
			F	ORANGE	GREEN	G	BiC YE/GR	BiC YE/GR
			P	BiC RD/YE	GREEN	R	BiC RD/YE	BiC RD/YE
			T	BiC GR/YE	BiC RD/GR	H	BLUE	RED
			L	YELLOW	BiC YE/GR			

THIS DOCUMENT CONTAINS PROPRIETARY INFORMATION AND SUCH INFORMATION MAY NOT BE DISCLOSED TO OTHERS FOR ANY PURPOSE OR USED FOR MANUFACTURING PURPOSES WITHOUT WRITTEN PERMISSION FROM AMPHENOL CANADA CORP.

REVISIONS			
REV	DESCRIPTION, ECN, EAR NO.	DATE	APP'D
A	PROPOSAL DRAWING	JUN02/18	L.CHAN
B	PROPOSAL DRAWING	JAN21/20	L.CHAN
C	ADD LED INFORMATION	AUG28/20	L.CHAN

#### LED SPECIFICATIONS:

FORWARD VOLTAGE:

1.8~2.4 VOLTS.(FOR SINGLE COLORS)

2.6~3.4 VOLTS.(FOR BI-COLORS)

REVERSE VOLTAGE: 5.0 VOLTS MAX.

LUMINOUS INTENSITY:

6~60 mcd (FOR SINGLE COLORS) (AT If=20mA)

3~15 mcd (FOR BI-COLORS) (AT If=20mA)

OPERATING TEMPERATURE: -40°C TO 85° C

WAVE SOLDERING TEMPERATURE: 260° C (5 SEC, 1/16" FROM CASE)

PLATING ON TAILS: TIN OR TIN/COPPER ALLOY OVER SILVER

PRIMARY COLOR FOR BI-COLOR

LEDS IN STANDARD ANODE/

CATHODE CONFIGURATION IS:

RED-GREEN= RED

RED-YELLOW= RED

GREEN-YELLOW= GREEN

GREEN-ORANGE= GREEN

#### LEGEND

BiC=BI-COLOR LED

LOWC=LOW CURRENT LED

YE=YELLOW

GR=GREEN

RD=RED

OR=ORANGE

#### NOTE:

THE TWO DIGITS PRECEDING THE ADDITIONAL LED CODE MUST BE USED IN THE PART NUMBER, WHEN ORDERING ANY OF THE ADDITIONAL LED OPTIONS.



UNLESS SPECIFIED OTHERWISE	DRAWN HANSON.C	JUN02/18
PRIMARY UNITS INCHES	CHECKED AMY.Z	JUN02/18
SECONDARY MILLIMETERS	M.E. APP'D	
REFERENCE IN PARENTHESES	Q.A. APP'D	
1 DECIMAL PLACE	DWG APP'D	
2 DECIMAL PLACES	ENG. REL. NO.	
3 DECIMAL PLACES ±0.015	REF.	
ANGULAR DEGREES ±1.5°	THIRD ANGLE PROJECTION	DO NOT SCALE DRAWING

Amphenol Canada Corp.  
Commercial Products

STACKABLE MULTI-PORT MODULAR JACK,  
8 POS. 8 CONTACTS, 2 LEDS PER PORT,  
SHIELDED WITH SIDE TABS AND TOP TABS  
—RoHS COMPLIANT

DWG NO. P-RJSAE-X38X-08X

CODE ID NO. 03554 DWG SIZE SCALE SHEET 2 OF 2