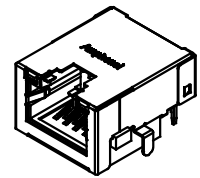
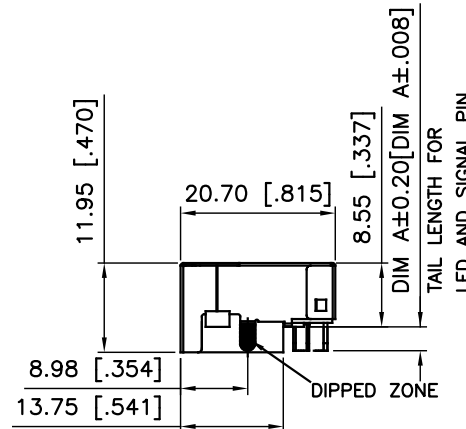


PIN NUMBERS SHOW FOR REFERENCE ONLY, IT DOES NOT SHOW ON ACTUAL PART

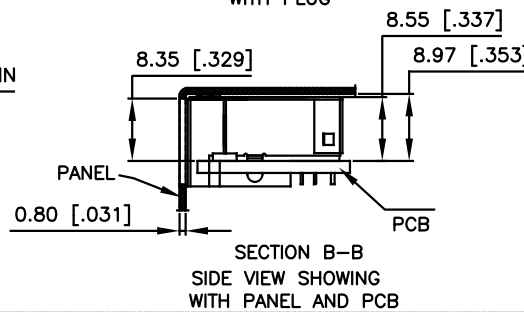
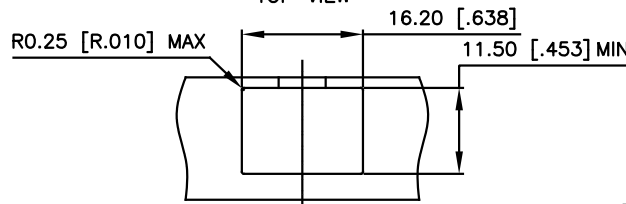
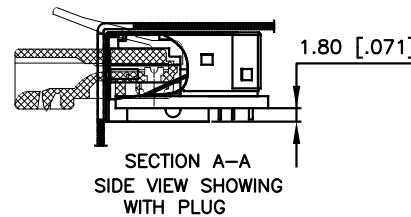
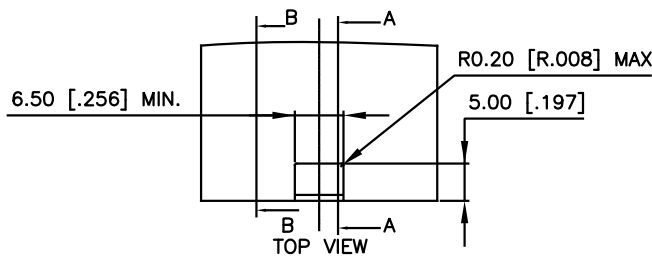


NOTES:

ELECTRICAL:

- VOLTAGE RATING : 125 VAC.
- CURRENT RATING : 1.25 AMP.
- INSULATING RESISTANCE : 500 MEGOHMS MINIMUM.
- DIELECTRIC STRENGTH : 1000 VAC 60Hz, 1MIN.
- CATEGORY 5e CHARACTERISTIC:

Frequency MHz	Near-End Crosstalk dB, MIN.	Return Loss dB, MIN.	Attenuation dB, MAX.
1.0	65	30	0.1
4.0	65	30	0.1
8.0	64.9	30	0.1
10.0	63	30	0.1
16.0	58.9	30	0.2
20.0	57	30	0.2
25.0	55	30	0.2
31.25	53.1	30	0.2
62.5	47.1	24.1	0.3
100.0	43	20	0.4



MECHANICAL:

- SHIELD : STAINLESS STEEL, WITH TIN-DIP ON SOLDER TABS.
- HOUSING : HIGH TEMP THERMOPLASTIC. UL 94V-0.
- INSERT : HIGH TEMP THERMOPLASTIC UL 94V-0.
- PCB : FR-4.
- CONTACT : PHOSPHOR BRONZE. SELECTIVE GOLD PLATING FOR MATING SURFACE, SEE AMPHENOL PART NUMBER FOR DETAIL. 50u" NICKEL UNDERPLATE 100u" MATTE TIN PLATING ON CONTACT SOLDER TAIL.

ENVIRONMENTAL:

- STORAGE : -40° TO +85°.
 - OPERATION : -40° TO +85°.
- MATES WITH MODULAR PLUG CONFORMING TO TIA 1096.
RECOMMENDED SOLDER PROCESS: WAVE SOLDER, PEAK TEMPERATURE 260° FOR 5 SECOND MAXIMUM.

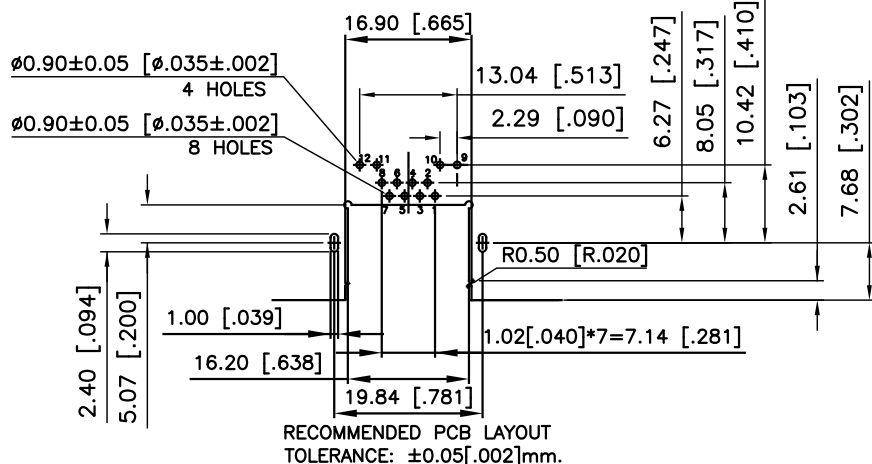
AMPHENOL PART NUMBER: RJE72-188-6XXX

GOLD PLATING OPTION _____ DIM A OPTIONS (SEE BELOW TABLE 1)

- 1=6u" [0.15 MICRONS] GOLD PLATING
 - 2=15u" [0.38 MICRONS] GOLD PLATING
 - 3=30u" [0.76 MICRONS] GOLD PLATING
 - 4=50u" [1.27 MICRONS] GOLD PLATING
- LED OPTIONS ON NEXT PAGE

TABLE 1

RJE721886XX1	3.18[.125]	2.36[.093]
RJE721886XX2	2.27[.089]	1.57[.062]
RJE721886XX3	2.16[.085]	1.57[.062]
AMPHENOL P/N:	DIM A	RECOMMEND PCB THICKNESS



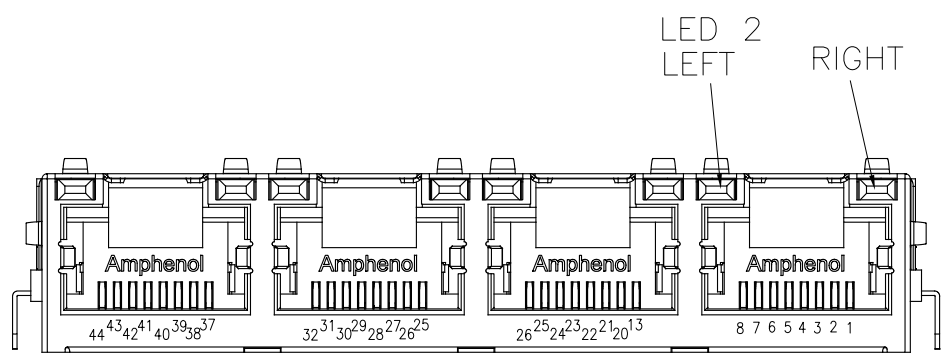
RECOMMENDED PCB LAYOUT
TOLERANCE: ±0.05[.002]mm.

THIS DOCUMENT CONTAINS PROPRIETARY INFORMATION AND SUCH INFORMATION MAY NOT BE DISCLOSED TO OTHERS FOR ANY PURPOSE OR USED FOR MANUFACTURING PURPOSES WITHOUT WRITTEN PERMISSION FROM AMPHENOL CANADA CORP.

UNLESS SPECIFIED OTHERWISE	DRAWN <i>KELVIN</i>	<i>OCT.8.2018</i>
PRIMARY UNITS MILLIMETERS	CHECKED <i>L.CHAN</i>	<i>OCT.8.2018</i>
SECONDARY INCHES	M.E. APP'D	
REFERENCE IN PARENTHESES	Q.A. APP'D	
GENERAL TOLERANCES FOR MM	DWG APP'D <i>ADRIAN.G</i>	<i>OCT.8.2018</i>
1 DECIMAL PLACE ±0.50	ENG. REL. NO.	
2 DECIMAL PLACE ±0.30	REF.	
3 DECIMAL PLACE ±0.10	THIRD ANGLE PROJECTION	DO NOT SCALE DRAWING
ANGULAR DEGREES ±3°		

Amphenol Canada Corp. Commercial Products		
MODULAR JACK, SINGLE PORT, 8 POSITIONS, 8 CONTACTS, SHIELDED WITHOUT TOP & SIDE TABS, WITH LED, SINK PCB TYPE, TAB UP, CAT5e		
DWG NO.	P-RJE72-188-6XXX	REV B
CODE ID NO. 03554	DWG SIZE: C	SCALE: N/A
		SHEET 1 OF 2

REVISIONS			
REV	DESCRIPTION, ECN, EAR NO.	DATE	APP'D
A	NEW PROPOSAL DRAWING	OCT.8,2018	L.CHAN
B	ADD PAGE 2 FOR LED OPTIONS	DEC.19,19	L.CHAN



TYPICAL FOR SINGLE & MULTI-PORT



EXAMPLE:

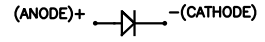
PART NUMBER RJE72-X88-1XXX

↑
LED COLOR CODE

CODE	LED 2 (LEFT)	LED 1 (RIGHT)	CODE	LED 2 (LEFT)	LED 1 (RIGHT)	CODE	LED 2 (LEFT)	LED 1 (RIGHT)
0	BLOCKED	BLOCKED	9	GREEN	BLOCKED	J	BiC RD/GR	YELLOW
1	YELLOW	GREEN	A	BiC GR/YE	BiC GR/YE	K	YELLOW	BiC GR/OR
2	BLOCKED	GREEN	B	BiC RD/GR	BiC RD/GR	L	BiC GR/YE	RED
3	YELLOW	BLOCKED	C	BiC RD/GR	BiC GR/YE	M	RED	YELLOW
4	GREEN	YELLOW	D	GREEN	BiC GR/YE	P	GREEN	BiC RD/GR
5	GREEN	GREEN	E	YELLOW	BiC GR/YE	R	BiC GR/OR	GREEN
6	YELLOW	YELLOW	F	BiC GR/YE	YELLOW	T	RED	RED
7	RED	GREEN	G	BiC GR/OR	BiC GR/OR	V	BiC RD/GR	GREEN
8	GREEN	RED	H	BiC GR/YE	GREEN			

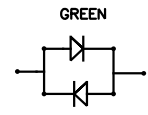
LED SCHEMATIC

SINGLE COLOUR LED



12(+), 11(-)
10(+), 9 (-)

BI-COLOUR LED



E.G. BiC GR/YE

12(+), 11(-)
10(+), 9 (-)

LED SPECIFICATIONS:

FORWARD VOLTAGE: 1.9 VOLTS MAX. @2mA
(FOR SINGLE COLOUR LED)
2.6 VOLTS MAX. @2mA
(FOR BI-COLOUR LED)
REVERSE VOLTAGE: 5.0 VOLTS MIN.
LUMINOUS INTENSITY: 0.4 mCd MIN.
(AT If=2mA)
STORAGE TEMPERATURE: -40° TO 85° C
PLATING ON TAILS: TIN OR TIN/COPPER ALLOY OVER SILVER

PRIMARY COLOR FOR BI-COLOR
LEDS IN STANDARD ANODE/
CATHODE CONFIGURATION IS:
RED-GREEN= RED
RED-YELLOW= RED
GREEN-YELLOW= GREEN
GREEN-ORANGE= GREEN

LEGEND

BiC=BI-COLOR LED
LOWC=LOW CURRENT LED
YE=YELLOW
GR=GREEN
RD=RED

UNLESS SPECIFIED OTHERWISE	DRAWN	KELVIN	OCT.8,2018
PRIMARY UNITS MILLIMETERS	CHECKED	L.CHAN	OCT.8,2018
SECONDARY INCHES	M.E. APP'D		
REFERENCE IN PARENTHESES	Q.A. APP'D		
GENERAL TOLERANCES FOR MM	DWG APP'D	ADRIAN.G	OCT.8,2018
1 DECIMAL PLACE ±0.50	ENG. REL. NO.		
2 DECIMAL PLACE ±0.30	REF.		
3 DECIMAL PLACE ±0.10	THIRD ANGLE PROJECTION		
ANGULAR DEGREES ±3'	DO NOT SCALE DRAWING		

Amphenol Canada Corp. Commercial Products	
MODULAR JACK, SINGLE PORT, 8 POSITIONS, 8 CONTACTS, SHIELDED WITHOUT TOP & SIDE TABS, WITH LED, SINK PCB TYPE, TAB UP, CAT5e	
DWG NO.	P-RJE72-188-6XXX
CODE ID NO. 03554	DWG SIZE: C SCALE: N/A SHEET 2 OF 2