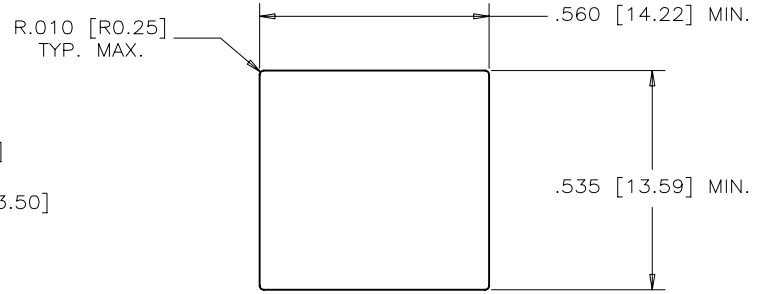
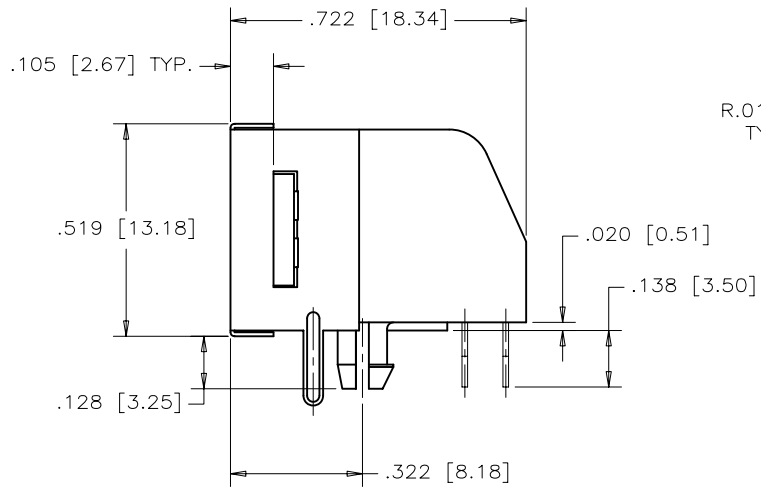
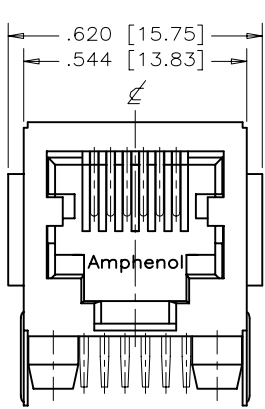
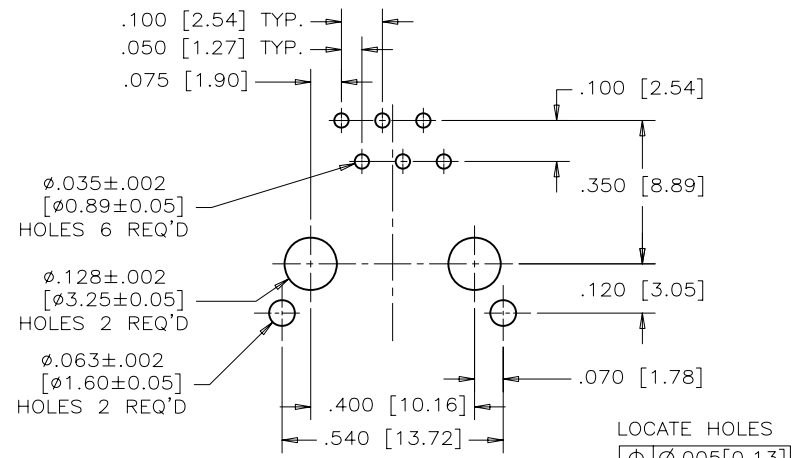


REVISIONS				
SYM	ZONE	ECN, ERN NO.	DATE	APPRD.
A		PROPOSAL	FEB 27/08	L.CHAN



RECOMMENDED PANEL CUTOUT



RECOMMENDED P.C.B. LAYOUT
(COMPONENT SIDE OF BOARD)

MATERIALS:
 PLASTIC HOUSING: ENGINEER THERMOPLASTIC
 FLAMMABILITY RATING UL 94V-0
 COLOR: BLACK

CONTACTS:
 PHOSPHOR BRONZE
 PLATING: REFER TO PART NUMBER FOR GOLD THICKNESS ON MATING SURFACES.
 50 μ " [1.27 MICRONS]
 MIN. NICKEL UNDERPLATE
 100 μ " [2.54 MICRONS]
 MIN. MATTE TIN OR GOLD FLASH ON CONTACT TAILS.

SHIELD:
 COPPER ALLOY
 PLATING: NICKEL



AMPHENOL PART NUMBER: RJE03-166-2X20-H

- 1 = 06 μ " GOLD
- 2 = 15 μ " GOLD
- 3 = 30 μ " GOLD
- 4 = 50 μ " GOLD

THIS DOCUMENT CONTAINS PROPRIETARY INFORMATION AND SUCH INFORMATION MAY NOT BE DISCLOSED TO OTHERS FOR ANY PURPOSE OR USED FOR MANUFACTURING PURPOSES WITHOUT WRITTEN PERMISSION FROM AMPHENOL CANADA CORP.

DRAWN	J.OUYANG	DATE	FEB 27/08	Amphenol Canada Corp.	
DESIGNED					
CHECKED	MT.CHAN	DATE	FEB 27/08	TITLE MODULAR JACK, PARTIAL SHIELD 6 POSITIONS, 6 CONTACTS (WITH SIDE FLANGES) – RoHS COMPLIANT	
I. E. APPRD.					
Q. A. APPRD.				DWG. DRAWING NO. P-RJE03-166-2X20H	
DWG. APPRD.					
ENG. REL. NO.				REF. REV. A	
DIMENSIONS ARE IN	CODE ID. NO.				
INCHES [mm]	03554			SCALE	
				WT. SURF. SHEET 1 OF 1	