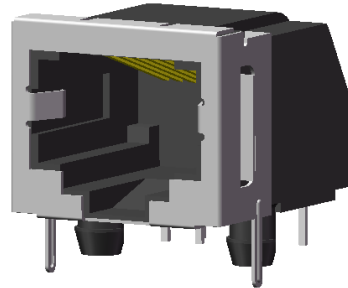


About Amphenol Commercial Products

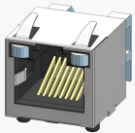
Amphenol's commercial connector products are used in a variety of end user applications including networking, telecom, server & computer, storage & HDD, consumer electronics and entertainment, professional audio & Industrial & Military/Aerospace.



P/N RJE03-188-2420 SHOWN

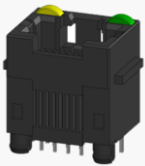
Related Products

RJSSE

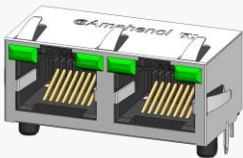


P/N RJSSE-5381 SHOWN SINGLE PORT, 8 POSITION, WITH SHIELD AND LIGHT PIPE

RJHSE



P/N RJHSE-3081 SHOWN SINGLE PORT VERTICAL MOUNT, NO SHIELD, WITH LEDs



P/N RJHSE-5385-02 SHOWN TWO PORT REGULAR MOUNT, WITH SHIELD AND LEDs

OVERVIEW

This product specification defines the general use and performance parameters for Amphenol's RJE03 series of modular jacks.

Availability: Single port available with shielding options.

USAGE

The RJE03 series of modular jacks supports Ethernet Protocols. Shielding available for increased EMI performance and LEDs for Link Activity and Network Speed verification.

APPLICATIONS

Intended for use in applications such as:

Data

- Storage
- Servers
- Routers
- Switches
- Hubs

Consumer Goods

- Security Systems
- Set Top Boxes
- Video Game Systems
- PCs, Laptops
- Copiers, Printers

Industrial and Instrumentation

- Uninterruptible Power Supply (UPS)
- ATMs
- Vending Machines
- POS Terminals
- Industrial IoT Platforms

Networking & Telecom

- 5G Wireless
- Telephones
- Modems
- Fax Machines

Medical

- Analysis Equipment
- Mass Spectrometers

About Amphenol Commercial Products

Amphenol's commercial connector products are used in a variety of end user applications including networking, telecom, server & computer, storage & HDD, consumer electronics and entertainment, professional audio & Industrial & Military/Aerospace.

ELECTRICAL CHARACTERISTICS

Contact Resistance	20 mΩ max
Insulation Resistance	500 MΩ minimum at 500V DC for 2 minutes max
Current Rating	1.5 Amps per contact
Voltage Rating	125 Volts AC
DWV	1000 VAC, 60 Hz. 1 min

Supports PoE, PoE+, and PoE++ per IEEE PoE standards

IP20 rated per IEC 60529

MECHANICAL CHARACTERISTICS

Mating Connector Insertion Force	5.0 lbs maximum
Mating Connector Pull Retention Force	20.0 lbs minimum
Durability	750 mating and unmating cycles for 50μ" gold plating
Recommended Soldering Temperature	Wave soldering peaked at 260°C for 5 seconds maximum
Operating Temperature	-40°C to +85°C

UL File #: E136228

Connectors with high temperature material are suitable for IR Reflow.

MATERIAL REQUIREMENTS

RJE03 connectors are RoHS compliant.

Unless otherwise specified, the materials for each component shall be:

Insulator	Engineering thermoplastic. Complies with UL 94V-0
Contacts	-Phosphor Bronze hard temper with gold thickness options (6μ", 15μ", 30μ", 50μ") over 50μ" minimum Nickel on contact mating area -100μ" minimum matte tin plating on soldering tail
Shield	Copper alloy; Nickel plated with tin dipped tail

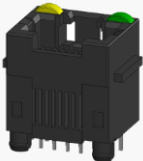
Related Products

RJSSE

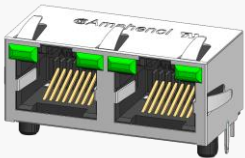


P/N RJSSE-5381 SHOWN SINGLE PORT, 8 POSITION, WITH SHIELD AND LIGHT PIPE

RJHSE



P/N RJHSE-3081 SHOWN SINGLE PORT VERTICAL MOUNT, NO SHIELD, WITH LEDs



P/N RJHSE-5385-02 SHOWN TWO PORT REGULAR MOUNT, WITH SHIELD AND LEDs

About Amphenol Commercial Products

Amphenol's commercial connector products are used in a variety of end user applications including networking, telecom, server & computer, storage & HDD, consumer electronics and entertainment, professional audio & Industrial & Military/Aerospace.

AVAILABLE DOCUMENTS

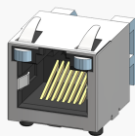
Below is a list of the most popular standard sales drawings:

Contact our website, sales, or an authorized Amphenol representation for additional drawings.

RJE03-188-0X20	Single port, without shield, with side flanges
RJE03-164-2X20	Single port, with partial shield, with side flanges
RJE03-166-0X20	Single port, without shield, with side flanges
RJE03-188-2X20	Single port, with partial shield, with side flanges
RJE03-164-0423	Single port, without shield, with side flanges, epoxy cover

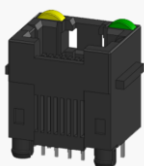
Related Products

RJSSE

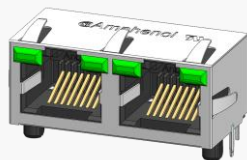


P/N RJSSE-5381 SHOWN SINGLE PORT, 8 POSITION, WITH SHIELD AND LIGHT PIPE

RJHSE



P/N RJHSE-3081 SHOWN SINGLE PORT VERTICAL MOUNT, NO SHIELD, WITH LEDs



P/N RJHSE-5385-02 SHOWN TWO PORT REGULAR MOUNT, WITH SHIELD AND LEDs

Amphenol Canada Corp.
605 Milner Avenue
Toronto, Ontario, Canada M1B 5X6

Copyright © Amphenol Corporation 2018 · All rights reserved

www.amphenolcanada.com (www.amphenol-icc.com)
(416) 291-4401
sales@amphenolcanada.com

Page 3 of 3

Amphenol