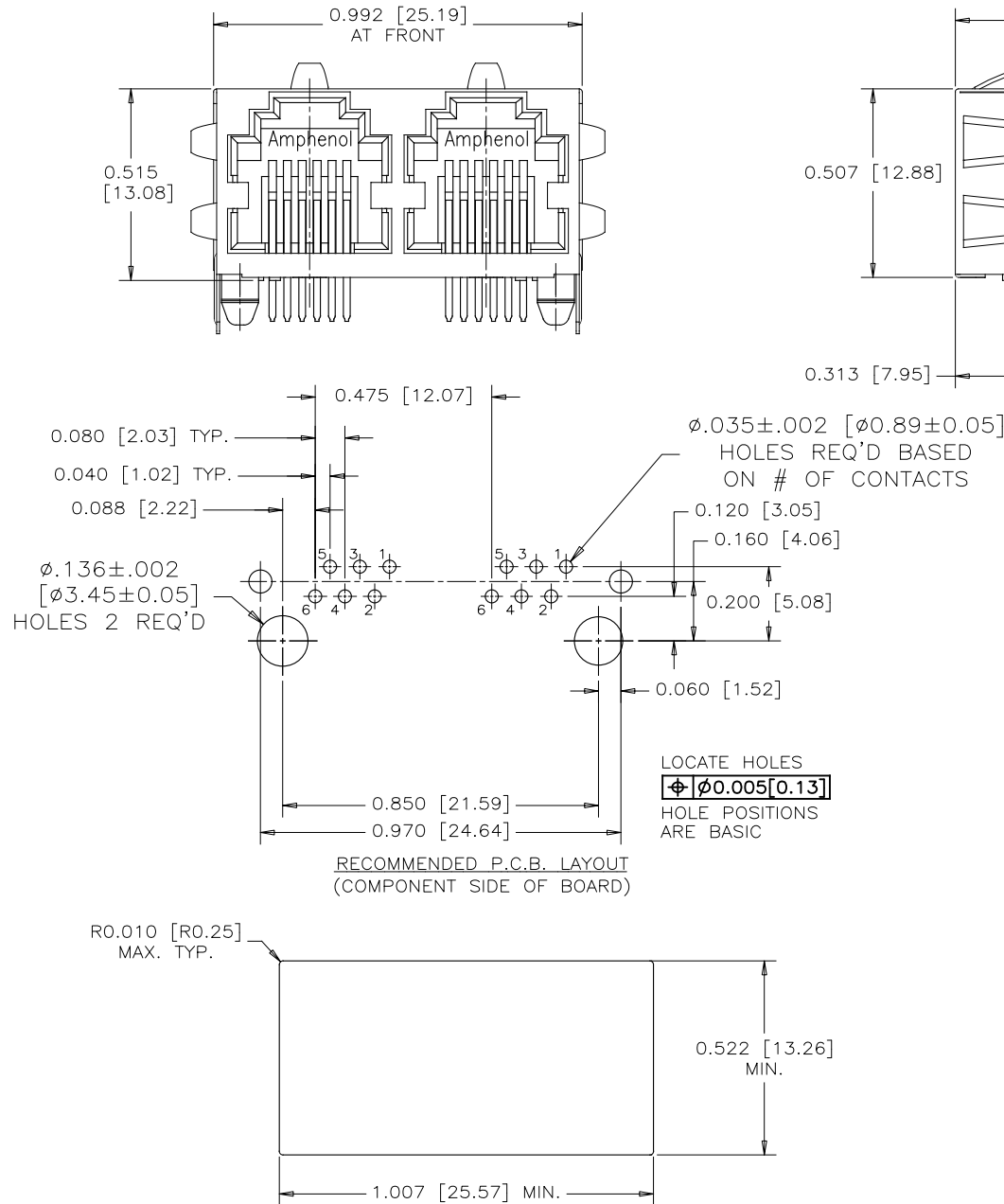


REV	DESCRIPTION, ECN, EAR NO.	DATE	APP'D
A	PROPOSAL DRAWING	MAR15/21	KELVIN.T



#### MATERIALS:

PLASTIC HOUSING: HIGH TEMPERATURE RESISTANT NYLON  
UL FLAMMABILITY RATING 94V-0.  
COLOR: BLACK

CONTACTS: PHOSPHOR BRONZE

CONTACT PLATING: SELECTIVE GOLD PLATING ON MATING SURFACES  
SEE AMPHENOL PART NUMBER FOR DETAIL.  
50  $\mu$ " [1.27 MICRONS] MINIMUM NICKEL UNDERPLATE  
100  $\mu$ " [2.54 MICRONS] MINIMUM MATTE TIN ON CONTACT TAILS.

SHIELD: COPPER ALLOY; NICKEL PLATED WITH TIN  
DIPPED PCB TAILS.

PART NUMBER: RJE01-XX2-02

GOLD PLATING

1 = 6  $\mu$ "  
6 = 50  $\mu$ "  
G = 15  $\mu$ "  
J = 30  $\mu$ "

#### CONTACTS:

2 = 2 CONTACTS LOADED IN POSITION 3 & 4.  
4 = 4 CONTACTS LOADED IN POSITION 2 TO 5.  
6 = 6 CONTACTS LOADED IN POSITION 1 TO 6.

UNLESS SPECIFIED OTHERWISE		DRAWN	STEVE.X	MAR15/21	Amphenol Canada Corp. Commercial Products		
PRIMARY UNITS	INCHES	CHECKED	L.CHAN	MAR15/21			
SECONDARY	MILLIMETERS	M.E. APP'D			MODULAR JACK, 2 PORT, 6 POSITION, CONTACTS OPTION, SHIELDED WITH TOP & SIDE EMI TABS-RoHS COMPLIANT		
REFERENCE IN PARENTHESES		G.A. APP'D					
GENERAL TOLERANCES		DWG APP'D			DWG NO. P-RJE01-XX2-02		
1 DECIMAL PLACE	$\pm 0.025$	ENG. REL. NO.					
2 DECIMAL PLACES	$\pm 0.02$	REF.			REV A		
3 DECIMAL PLACES	$\pm 0.015$	THIRD ANGLE PROJECTION					
ANGULAR DEGREES	$\pm 1^\circ$	DO NOT SCALE DRAWING			CODE ID NO. 03554	DWG SIZE C	SCALE NA
					SHEET 1 OF 1		