

EEM-MA770 - Measuring device

2907945

<https://www.phoenixcontact.com/us/products/2907945>



Please be informed that the data shown in this PDF document is generated from our online catalog. Please find the complete data in the user documentation. Our general terms of use for downloads are valid.



Multi-functional energy measuring device with integrated Modbus/TCP interface for measuring electrical parameters in low-voltage installations up to 690 V. ([phoenixcontact.com/empro-help](https://www.phoenixcontact.com/empro-help))

Commercial data

Item number	2907945
Packing unit	1 pc
Minimum order quantity	1 pc
Sales key	C446
Product key	CK4C21
Catalog page	Page 202 (C-5-2019)
GTIN	4055626260389
Weight per piece (including packing)	420.68 g
Weight per piece (excluding packing)	522.3 g
Customs tariff number	90303100
Country of origin	DE

EEM-MA770 - Measuring device



2907945

<https://www.phoenixcontact.com/us/products/2907945>

Technical data

Product properties

Product type	Energy measuring device
Product family	EMpro

Electrical properties

Maximum power dissipation for nominal condition	10 VA
Mains type	3-phase (3 or 4-conductor), 2-phase (2-conductor), and single-phase (1-conductor)

Electrical isolation

Test voltage	4 kV AC (50 Hz, 60 s)
Pollution degree	2

Electrical isolation Housing against all potentials IEC 61010-1

Standards/regulations	IEC 61010-1
Overvoltage category	III (300 V AC) II (600 V AC)
Insulation	Reinforced insulation

Electrical isolation Supply against all other potentials IEC 61010-1

Standards/regulations	IEC 61010-1
Overvoltage category	III (300 V AC) II (600 V AC)
Insulation	Reinforced insulation

Electrical isolation Voltage measurement input against all other potentials IEC 61010-1

Standards/regulations	IEC 61010-1
Measuring category	III (300 V AC) II (600 V AC)
Insulation	Reinforced insulation

Electrical isolation Current measurement input against all other potentials

Insulation	Functional insulation
------------	-----------------------

Electrical isolation Digital I/Os

Insulation	Functional insulation
------------	-----------------------

Electrical isolation Communication interface

Insulation	Functional insulation
------------	-----------------------

Supply

Supply voltage range	100 V AC ... 400 V AC (± 20 %) 150 V DC ... 250 V DC (± 20 %)
Power consumption	≤ 4 W
Nominal frequency	50 Hz ... 60 Hz (AC sine)

EEM-MA770 - Measuring device

2907945

<https://www.phoenixcontact.com/us/products/2907945>



Input data

General

Measuring principle	True RMS value measurement (TRMS)
Measured value	AC sine (50 Hz/60 Hz)
Acquisition of harmonics	up to 63rd harmonic
Description of the input	Digital input in accordance with IEC/EN 61131-2 (type 3)
Number	1
Voltage input signal	24 V DC 0 V DC ... 30 V DC
Current input signal	2 mA ... 15 mA
Protection	250 mA (fast-blow)

Measurement: Voltage

Input name	Voltage measuring input V1, V2, V3
Input voltage range direct	35 V AC ... 690 V AC (Phase/Phase) 20 V AC ... 400 V AC (Phase/neutral conductor)
Input voltage range via external transformers	60 V AC ... 2000000 V AC (primary) 60 V AC ... 400 V AC (secondary)
Surge voltage capacity	760 V AC (Phase/Phase)
Precision	0.2 %
Power consumption	< 2 VA

Measurement: Current

Input name	Current measurement I1, I2, I3
Input current	1 A (secondary) 5 A (secondary)
Measuring range	1 A ... 20000 A (primary)
Overload capacity	6 A (I_{max})
Response threshold from measuring range nominal value	10 mA (1 A) 50 mA (5 A)
Precision	0.2 %
Current overload	50 A for 1 s
Power consumption	< 0.5 VA

Measurement: Power

Precision	0.5 %
Active energy (IEC 62053-22)	Class 0.5 S
Reactive power (IEC 62053-23)	Class 2
ANSI C12.20	Class 0.5 S

Output data

Output description	Digital output in accordance with IEC/EN 61131-2 (type 3)
Number	1
Current output signal	≤ 100 mA

EEM-MA770 - Measuring device

2907945

<https://www.phoenixcontact.com/us/products/2907945>



Voltage output signal	24 V DC
Protection	250 mA (fast-blow)

Connection data

Current / voltage / supply

Connection method	Screw connection
Stripping length	8 mm
Screw thread	M3
Conductor cross section rigid	0.2 mm ² ... 6 mm ²
Conductor cross section flexible	0.2 mm ² ... 4 mm ²
Conductor cross section AWG	24 ... 10
Tightening torque	0.5 Nm ... 0.6 Nm

Digital I/O / communication

Connection method	Screw connection
Stripping length	7 mm
Screw thread	M3
Conductor cross section rigid	0.14 mm ² ... 2.5 mm ²
Conductor cross section flexible	0.14 mm ² ... 1.5 mm ²
Conductor cross section AWG	26 ... 14
Tightening torque	0.5 Nm ... 0.6 Nm

Interfaces

Data: Network interface

Communication protocol	Modbus/TCP
	REST
Connection method	RJ45
Designation	Network interface
Connection method	RJ45
Protocol	Modbus/TCP
	REST

Dimensions

Width	96 mm
Height	96 mm
Depth	58 mm

Material specifications

Color	gray (RAL 7042)
-------	-----------------

Environmental and real-life conditions

Ambient conditions

Degree of protection (Housing)	IP20 (Housing)
Degree of protection (Display)	IP54 (Display (+ EEM-MA-IP))

EEM-MA770 - Measuring device



2907945

<https://www.phoenixcontact.com/us/products/2907945>

Ambient temperature (operation)	-25 °C ... 70 °C
Ambient temperature (storage/transport)	-30 °C ... 80 °C
Altitude	≤ 2000 m
Max. permissible relative humidity (operation)	≤ 95 % (non-condensing)

Approvals

CE

Certificate	CE-compliant
-------------	--------------

UKCA

Certificate	UKCA-compliant
-------------	----------------

UL, USA/Canada

Identification	UL/C-UL Listed UL 61010-1
----------------	---------------------------

UL data

Operating mode	Indoor use
----------------	------------

UL data

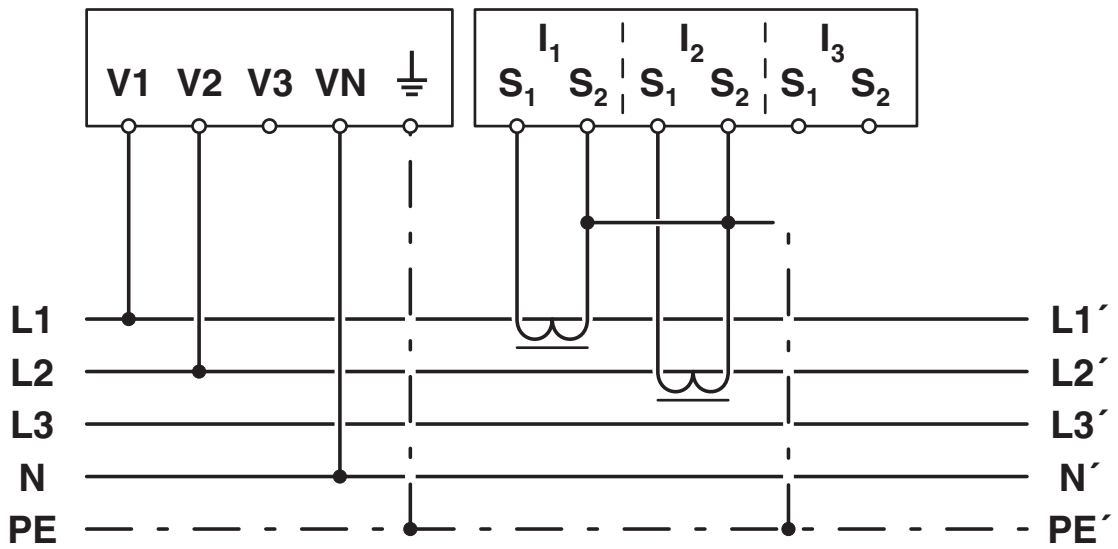
Operating mode	Indoor use
----------------	------------

Mounting

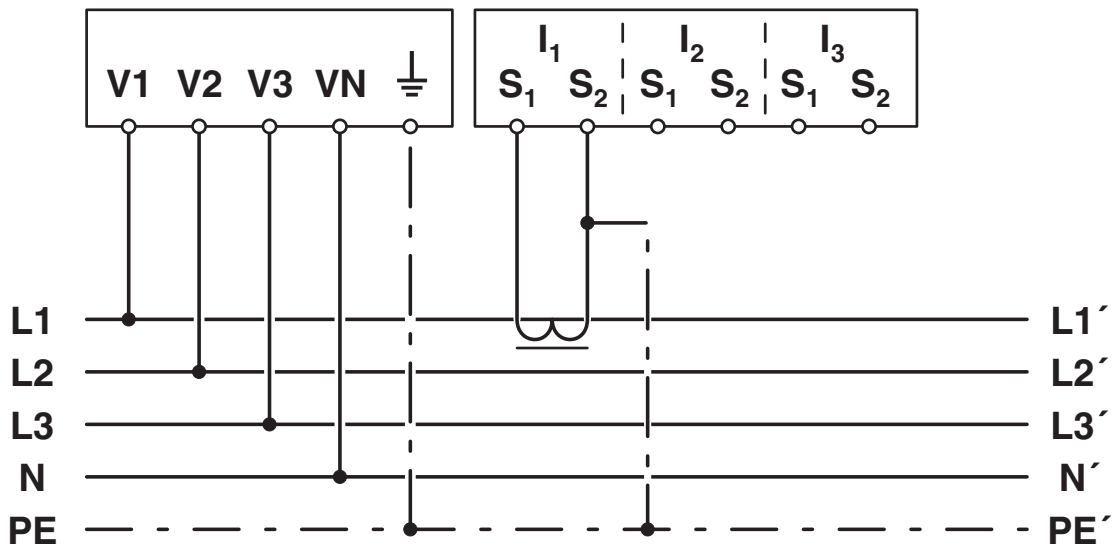
Mounting type	Panel mount
Mounting position	Front panel installation, horizontal

Drawings

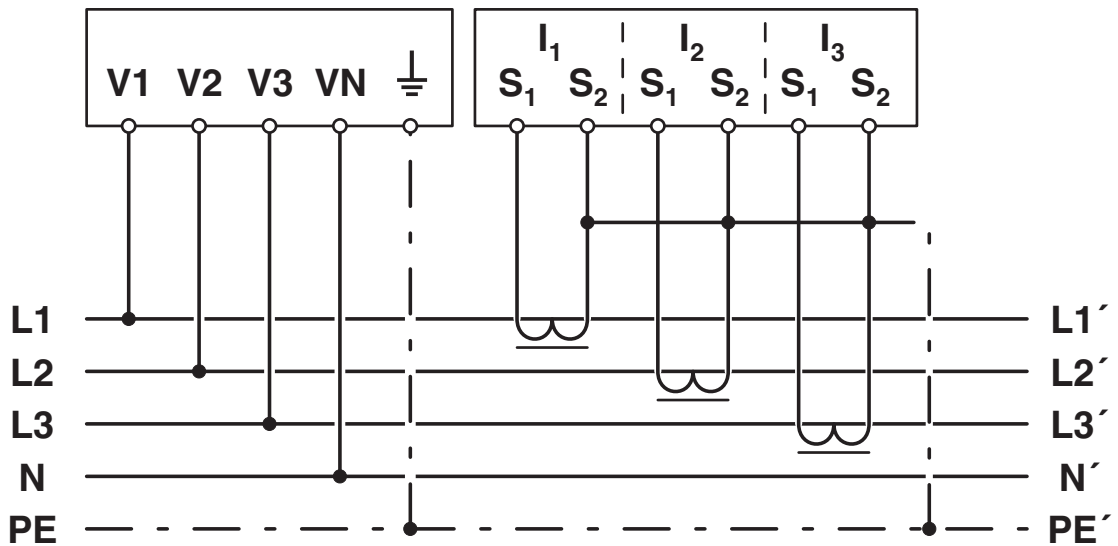
Connection diagram



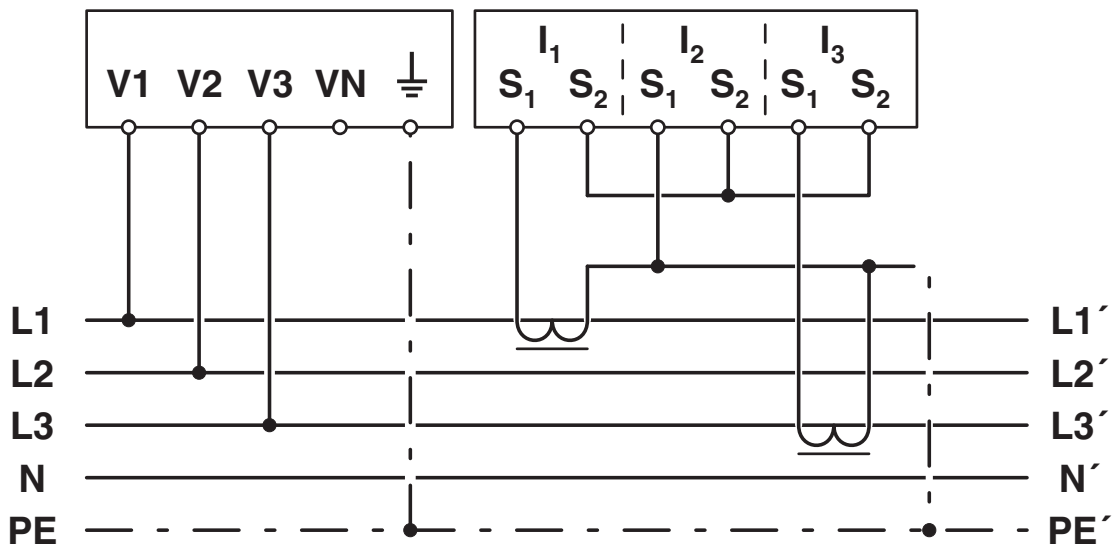
Connection diagram



Connection diagram



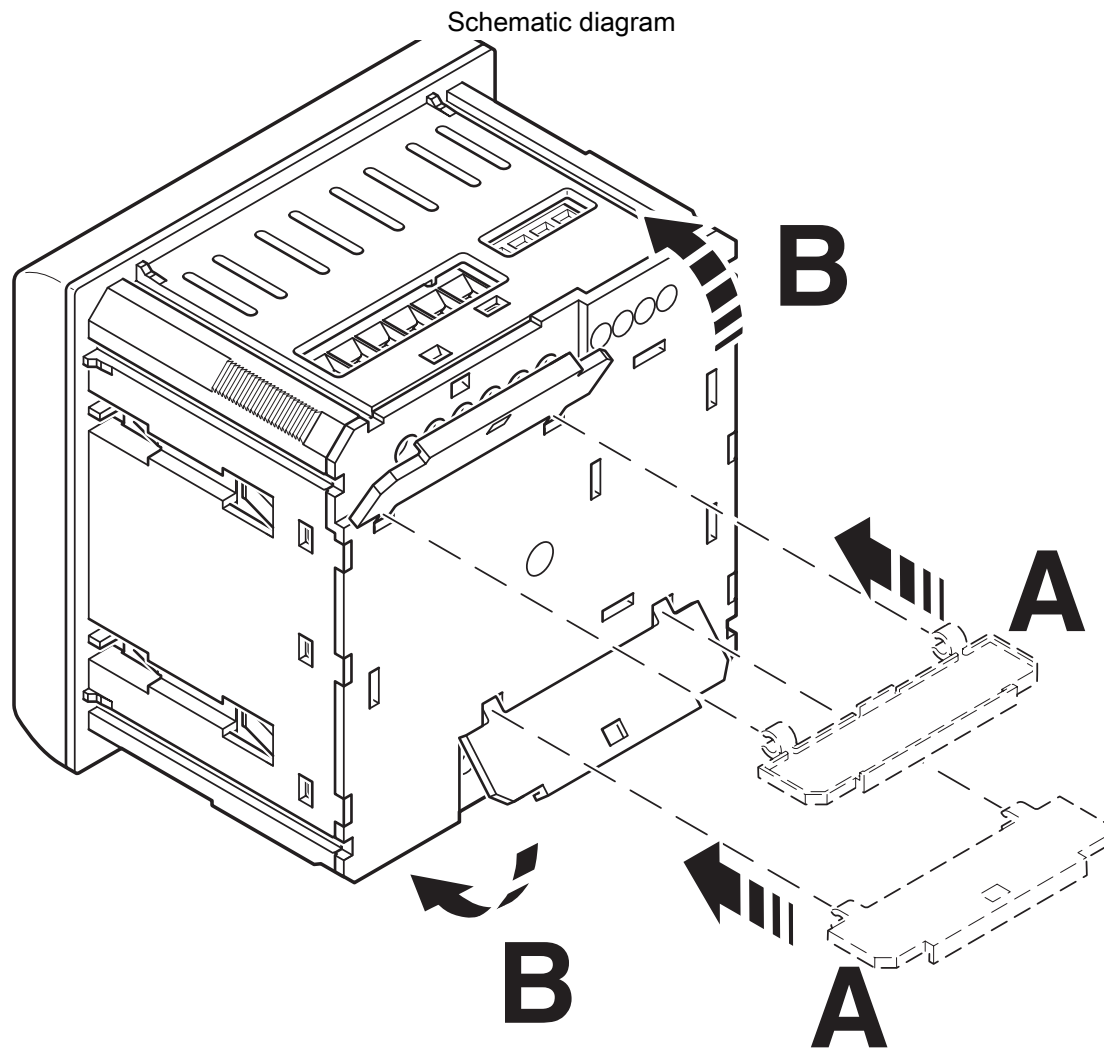
Connection diagram



EEM-MA770 - Measuring device

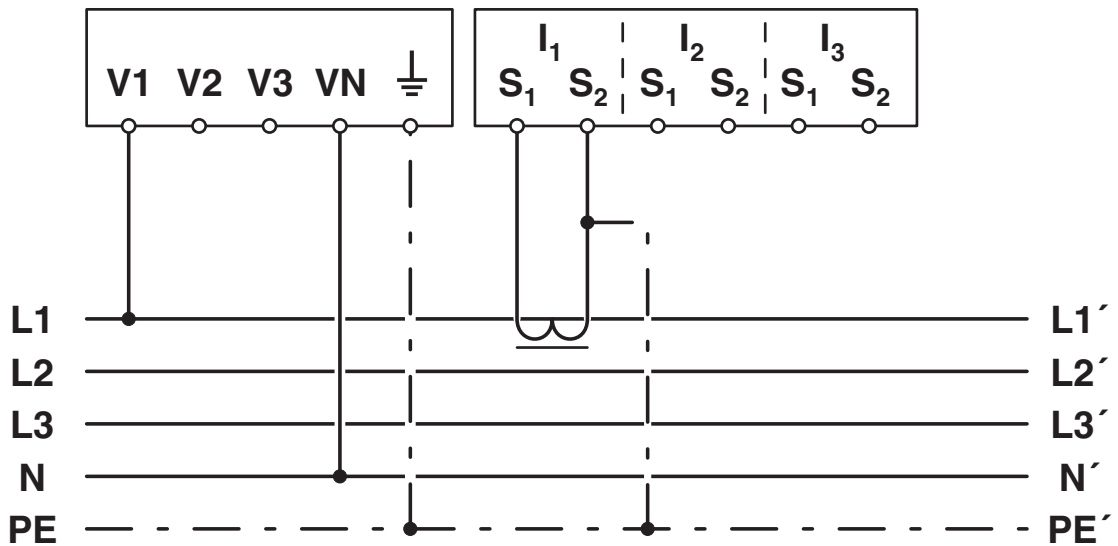
2907945

<https://www.phoenixcontact.com/us/products/2907945>

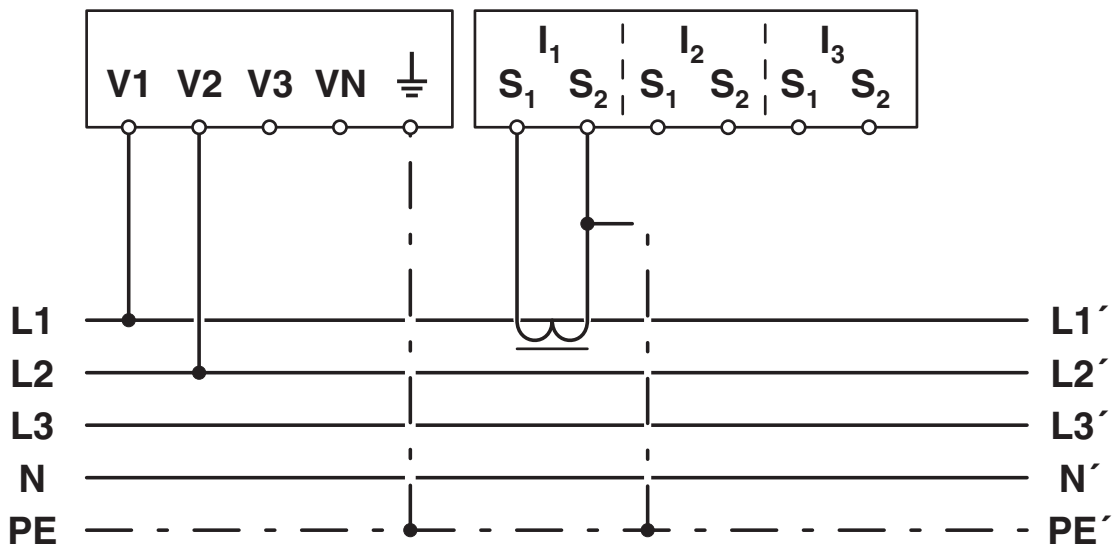


Mounting

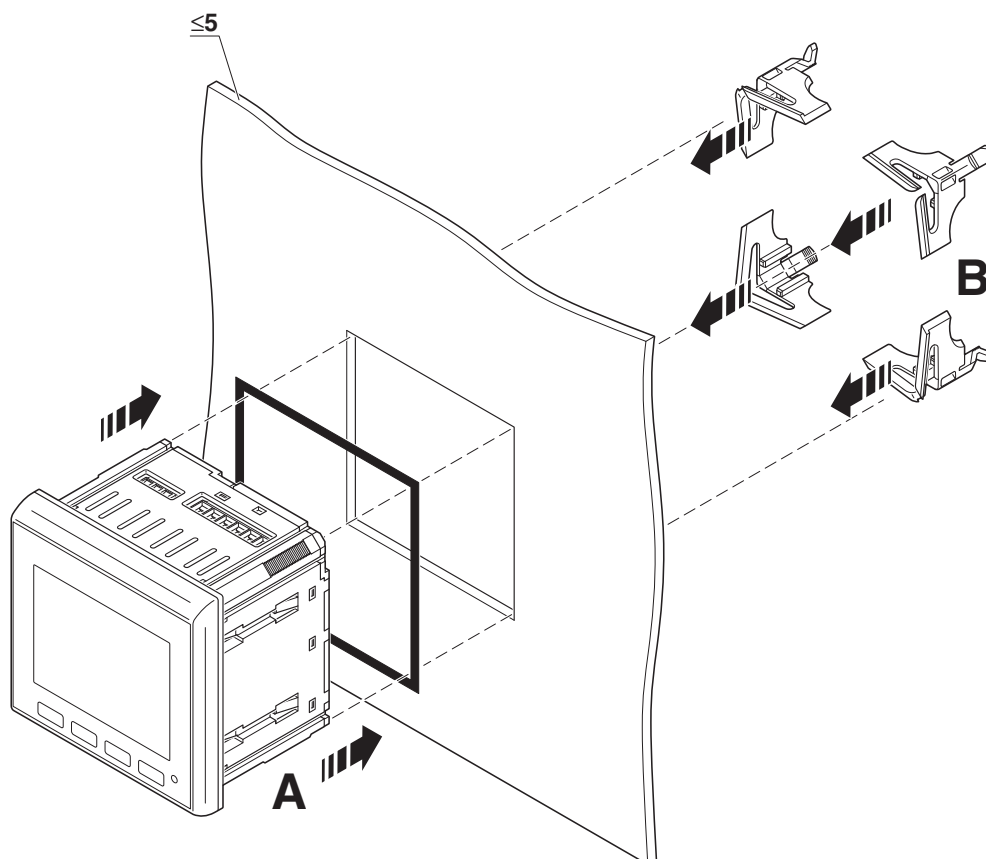
Connection diagram



Connection diagram

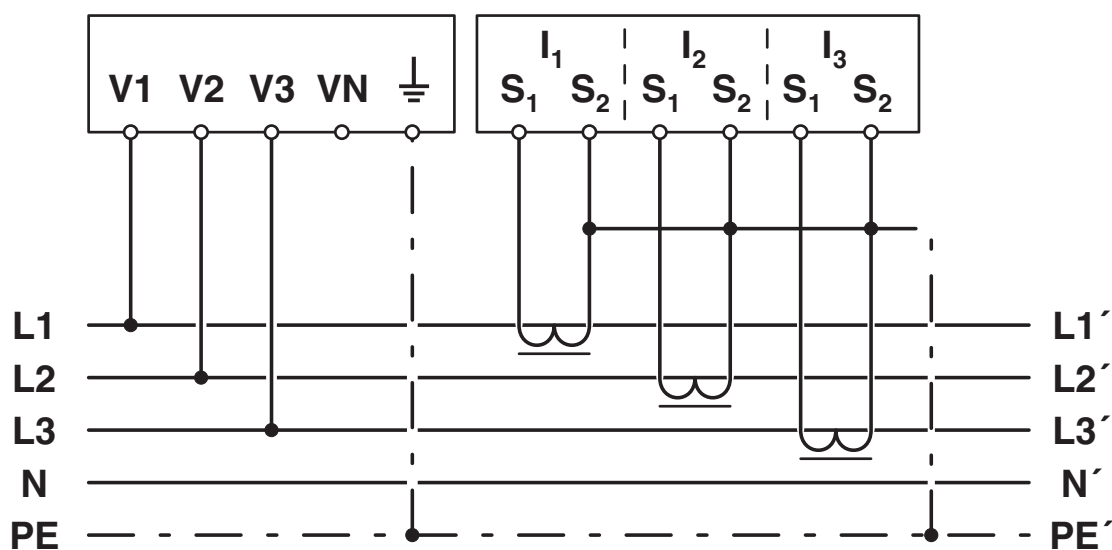


Schematic diagram

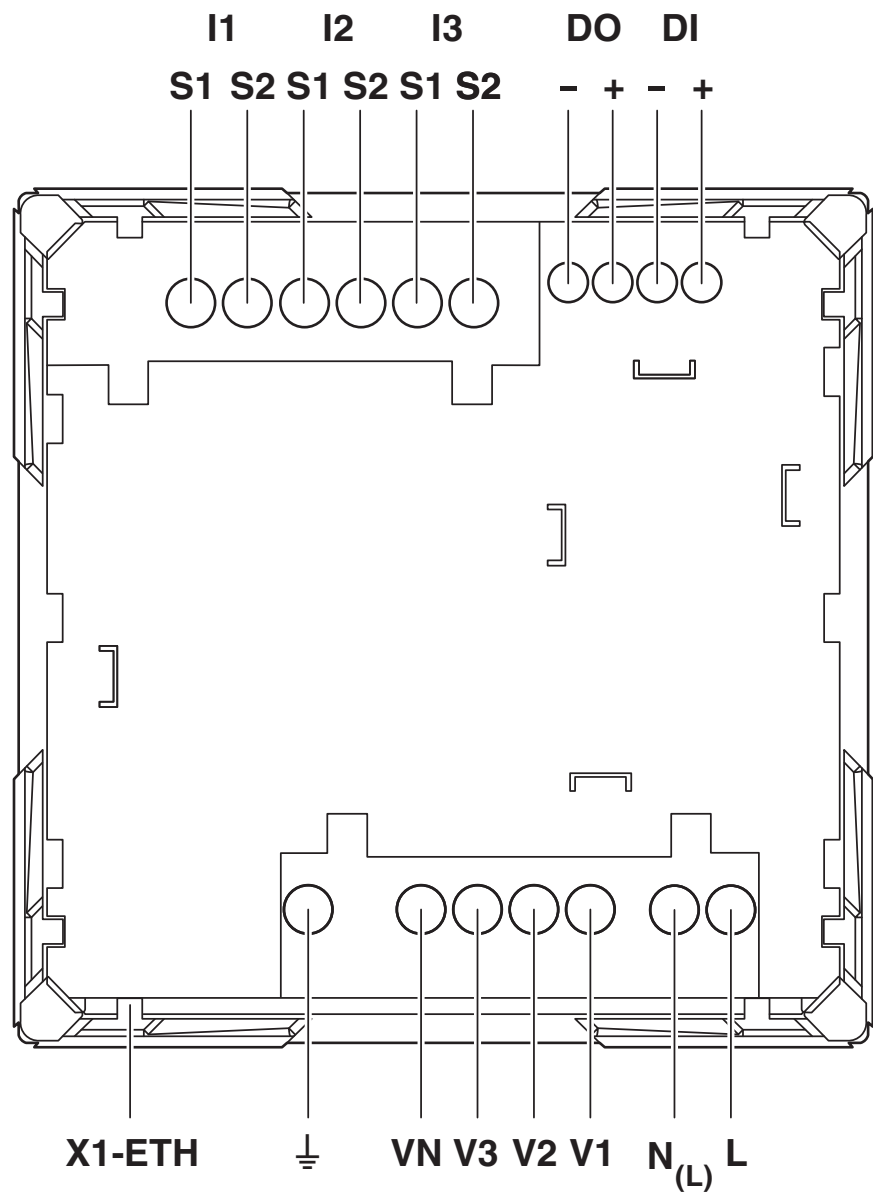


Mounting

Connection diagram

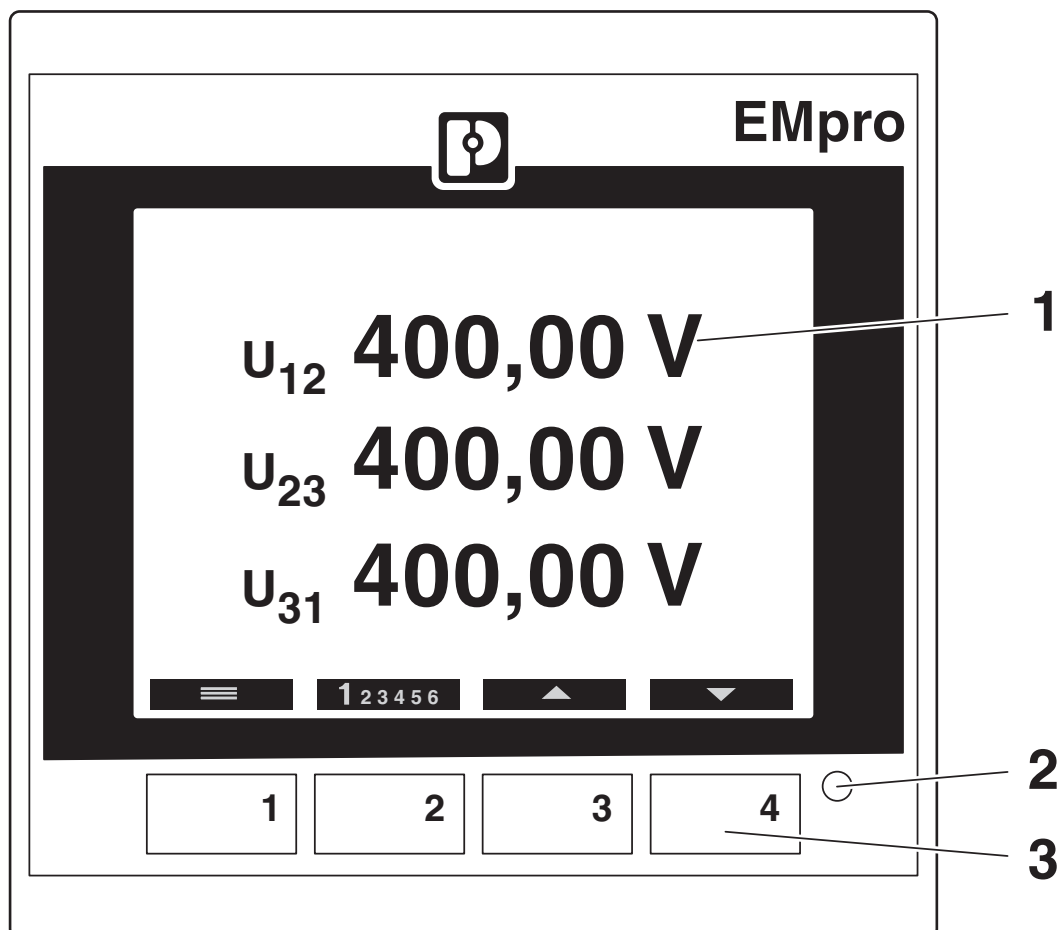


Connection diagram

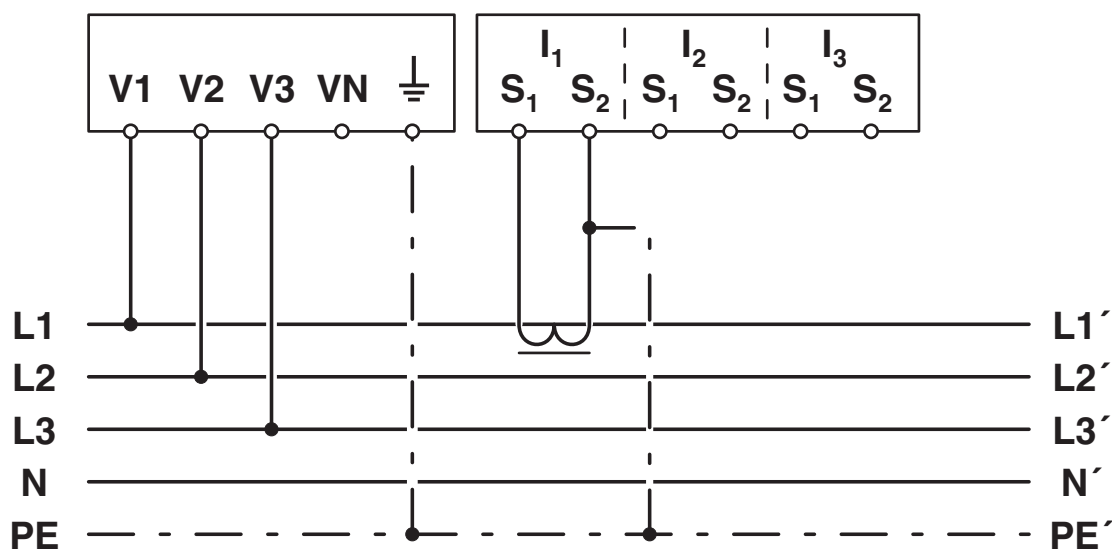


Pin assignment

Schematic diagram



Connection diagram



EEM-MA770 - Measuring device




2907945


<https://www.phoenixcontact.com/us/products/2907945>

Approvals


To download certificates, visit the product detail page: <https://www.phoenixcontact.com/us/products/2907945>



EAC
Approval ID: RU*DE*08.B.00734/19



UL Listed
Approval ID: FILE E 357804



cUL Listed
Approval ID: FILE E 357804

cULus Listed

EEM-MA770 - Measuring device



2907945

<https://www.phoenixcontact.com/us/products/2907945>

Classifications

ECLASS

ECLASS-11.0	27142330
ECLASS-12.0	27142330
ECLASS-13.0	27142330

ETIM

ETIM 9.0	EC002301
----------	----------

UNSPSC

UNSPSC 21.0	41113600
-------------	----------

Environmental product compliance

EU RoHS	
Fulfills EU RoHS substance requirements	Yes
Exemption	7(a), 7(c)-I
China RoHS	
Environment friendly use period (EFUP)	EFUP-50
	An article-related China RoHS declaration table can be found in the download area for the respective article under "Manufacturer declaration". For all articles with EFUP-E, no China RoHS declaration table issued and required.
EU REACH SVHC	
REACH candidate substance (CAS No.)	Lead(CAS: 7439-92-1)
SCIP	818a59e0-c99b-42f7-8579-62bd9a8a07e0

EEM-MA770 - Measuring device

2907945

<https://www.phoenixcontact.com/us/products/2907945>



Accessories

EEM-MKT-DRA - DIN rail adapter

2902078

<https://www.phoenixcontact.com/us/products/2902078>



DIN rail adapter for EEM-MA770-X and EEM-MA771-X series energy measuring devices

PACT MCR-V1-21-44 - Current transformer

2277268

<https://www.phoenixcontact.com/us/products/2277268>



Bus-bar current transformer, primary current can be selected between 50...500 A AC; secondary current can be selected as 1 A AC or 5 A AC; accuracy class can be selected as 0.5 or 1; rated power can be selected

EEM-MA770 - Measuring device

2907945

<https://www.phoenixcontact.com/us/products/2907945>



PACT MCR-V2- 3015- 60 - Current transformer

2277271

<https://www.phoenixcontact.com/us/products/2277271>



Window-type current transformer, primary current can be selected between 50... 750 A AC; secondary current can be selected as 1 A AC or 5 A AC; accuracy class can be selected as 0.5 or 1; rated power can be selected

PACT MCR-V2-3015-60-PT - Current transformer

2907413

<https://www.phoenixcontact.com/us/products/2907413>



Window-type current transformer with screw and Push-in connection technology, conductor connection for Push-in: from directly above, no tools required. The following can be selected: primary current (50 ... 750) A AC, secondary current (1 or 5) A AC, accuracy class 0.5 or 1, VA power

EEM-MA770 - Measuring device

2907945

<https://www.phoenixcontact.com/us/products/2907945>



PACT MCR-V2- 4012- 70 - Current transformer

2277284

<https://www.phoenixcontact.com/us/products/2277284>



Window-type current transformer, primary current can be selected between 75... 1000 A AC; secondary current can be selected as 1 A AC or 5 A AC; accuracy class can be selected as 0.5 or 1; rated power can be selected

PACT MCR-V2-4012-70-PT - Current transformer

2907414

<https://www.phoenixcontact.com/us/products/2907414>



Window-type current transformer with screw and Push-in connection technology, conductor connection for Push-in: from directly above, no tools required. The following can be selected: primary current (100 ... 1000) A AC, secondary current (1 or 5) A AC, accuracy class 0.5 or 1, VA power

EEM-MA770 - Measuring device

2907945

<https://www.phoenixcontact.com/us/products/2907945>



PACT MCR-V2- 5012- 85 - Current transformer

2277297

<https://www.phoenixcontact.com/us/products/2277297>



Window-type current transformer, primary current can be selected between 100..1500 A AC; secondary current can be selected as 1 A AC or 5 A AC; accuracy class can be selected as 0.5 or 1; rated power can be selected

PACT MCR-V2-5012-85-PT - Current transformer

2907416

<https://www.phoenixcontact.com/us/products/2907416>



Window-type current transformer with screw and Push-in connection technology, conductor connection for Push-in: from directly above, no tools required. The following can be selected: primary current (100 ... 1500) A AC, secondary current (1 or 5) A AC, accuracy class 0.5 or 1, VA power

EEM-MA770 - Measuring device

2907945

<https://www.phoenixcontact.com/us/products/2907945>



PACT MCR-V2- 6015- 85 - Current transformer

2277336

<https://www.phoenixcontact.com/us/products/2277336>



Window-type current transformer, primary current can be selected between 200 .
.. 1,250 A AC; secondary current can be selected as 1 A AC or 5 A AC; accuracy
class can be selected as 0.5 or 1; rated power can be selected

PACT MCR-V2-6015-85-PT - Current transformer

2907417

<https://www.phoenixcontact.com/us/products/2907417>



Window-type current transformer with screw and Push-in connection technology,
conductor connection for Push-in: from directly above, no tools required. The
following can be selected: primary current (200 ... 1600) A AC, secondary current
(1 or 5) A AC, accuracy class 0.5 or 1, VA power

EEM-MA770 - Measuring device

2907945

<https://www.phoenixcontact.com/us/products/2907945>



PACT MCR-V2-10020-129 - Current transformer

2277378

<https://www.phoenixcontact.com/us/products/2277378>



Window-type current transformer, primary current can be selected between 800 and 4,000 A AC, secondary current can be selected 1 A AC or 5 A AC, accuracy class can be selected 0.5 or 1, rated power can be selected

PACT MCR-V3-60 - Current transformer

2277417

<https://www.phoenixcontact.com/us/products/2277417>



Winding current transformer, primary current can be selected between 1...40 A AC; secondary current can be selected as 1 A AC or 5 A AC; accuracy class can be selected as 0.5 or 1; rated power can be selected

Phoenix Contact 2024 © - all rights reserved
<https://www.phoenixcontact.com>

Phoenix Contact USA
586 Fulling Mill Road
Middletown, PA 17057, United States
(+717) 944-1300
info@phoenixcon.com