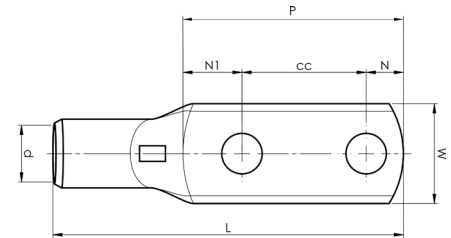




ELPRESS®

Product Datasheet



KRF tube terminals with two holes, 16 - 400 mm²

mm ²	AWG	Name	Screw	W (mm)	d	N	N1	P	cc	L	t	s	Tool	Die	Pcs/pack
16	6	KRF16-6X2-16	M6x2	13	6	6,5	8,5	31	16	50	2,8	11	PVL350, V600, DV1300, DV250	9	100
16	6	KRF16-10X2-40	M10x2	16	6	11	11	62	40	81	2,2	11	PVL350, V600, DV1300, DV250	9	100
16	6	KRF16-10X2-24-26	M10x2	16	6	11	19	55	25	75	2,2	11	PVL350, V600, DV1300, DV250	9	100
25	4	KRF25-6X2-16	M6x2	16	8	6,5	8,5	31	16	54	2,9	13	PVL350, V600, DV1300, DV250	11	100
25	4	KRF25-8X2-40	M8x2	16	8	9,5	10,5	60	40	81	2,8	13	PVL350, V600, DV1300, DV250	11	100
25	4	KRF25-10X2-40	M10x2	18	8	11	19	70	40	93	2,5	14	PVL350, V600, DV1300, DV250	11	100
25	4	KRF25-14X2-40	M14x2	22	8	15	17	72	40	94	1,8	13	PVL350, V600, DV1300, DV250	11	100
35	2	KRF35-10X2-24-26	M10x2	18	9	11	16	52	25	78	3,9	16	PVL350, V600, DV1300, DV250	13	100
35	2	KRF35-10X2-40	M10x2	20	9	11	19	70	40	95	3,5	16	PVL350, V600, DV1300, DV250	13	100
50	1/0	KRF50-10X2-24-26	M10x2	21	11	11	16	52	25	82	3,4	19	PVL350, V600, DV1300, DV250	14,5	100
50	1/0	KRF50-10X2-40	M10x2	21	11	11	19	70	40	100	3,3	19	PVL350, V600, DV1300, DV250	14,5	100
70	2/0	KRF70-10X2-24-26	M10x2	25	13	11	17	53	25	86	3,9	22	PVL350, V600, DV1300, DV250	17	50
70	2/0	KRF70-12X2-40	M12x2	25	13	12	18	70	40	103	3,9	22	PVL350, V600, DV1300, DV250	17	25
95	3/0	KRF95-10X2-24-26	M10x2	29	15	11	19	55	25	93	4,9	25	V600, DV1300, DV250	20	25
95	3/0	KRF95-12X2-40	M12x2	29	15	12	18	70	40	107	4,9	25	V600, DV1300, DV250	20	25
120	4/0	KRF120-10X2-24-26	M10x2	32	17	11	19	55	25	97	4,9	27	V600, DV1300, DV250	22	25
120	4/0	KRF120-12X2-40	M12x2	32	17	12	19	71	40	113	4,9	27	V600, DV1300, DV250	22	25
150	300	KRF150-10X2-24-26	M10x2	36	19	11	19	55	25	104	5,9	32	V600, DV1300, DV250	25	25
150	300	KRF150-12X2-40	M12x2	36	19	12	19	71	40	120	5,9	32	V600, DV1300, DV250	25	20
185	350	KRF185-10X2-24-26	M10x2	39	21	11	21	57	25	111	5,9	37	DV1300, DV250	27	20
185	350	KRF185-12X2-40	M12x2	39	21	12	20	72	40	126	5,9	37	DV1300, DV250	27	20
240	500	KRF240A-10X2-24-26	M10x2	42	22,5	11	22	58	25	115	6,4	37	DV1300, DV250	30	10
240	500	KRF240A-12X2-40	M12x2	42	22,5	12	21	73	40	130	6,4	37	DV1300, DV250	30	10
300	600	KRF300A-12X2-40	M12x2	46	24,5	12	22	74	40	133	6,8	40	DV1300, DV250	32	5
400	750	KRF400A-12X2-40	M12x2	56	30	12	23	75	40	145	7,8	52	DV1300, DV250	38	1

t = palm thickness, s = strip length



ELPRESS®