

DAISY-7X1-BW

~80° batwing beam

SPECIFICATION:

Dimensions	40.0 x 259.0
Height	40 mm
ROHS compliant	yes ⓘ

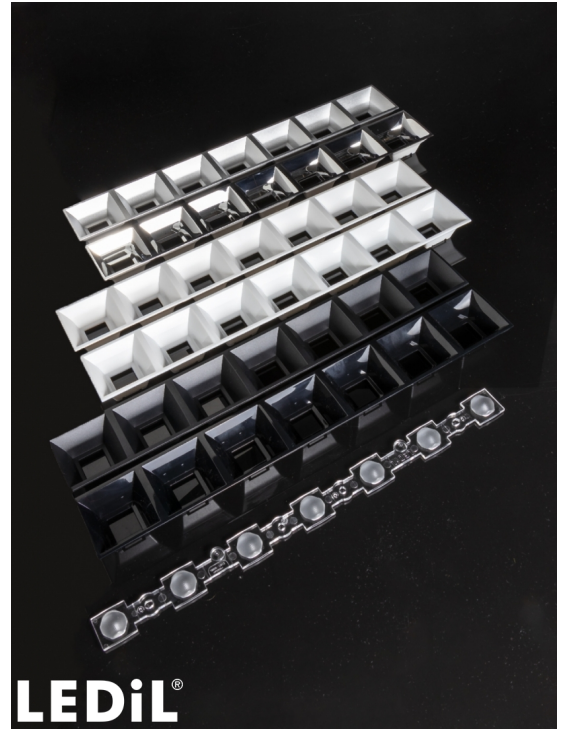
MATERIALS:

Component	Type	Material	Colour	Finish	Length
C18806_DAISY-7X1-BW	Multi-lens	PMMA	clear		
C18409_DAISY-7X1-SHD-MET-MATT	Shade	PC	metal	matt	279.5
C18167_DAISY-7X1-SHD-MET	Shade	PC	metal	gloss	
C17225_DAISY-7X1-SHD-WHT-MATT	Shade	PC	white	matt	279.5
C17051_DAISY-7X1-SHD-MATT	Shade	PC	black	matt	279.5
C16876_DAISY-7X1-SHD-WHT	Shade	PC	white	gloss	279.5
C16872_DAISY-7X1-SHD	Shade	PC	black	gloss	

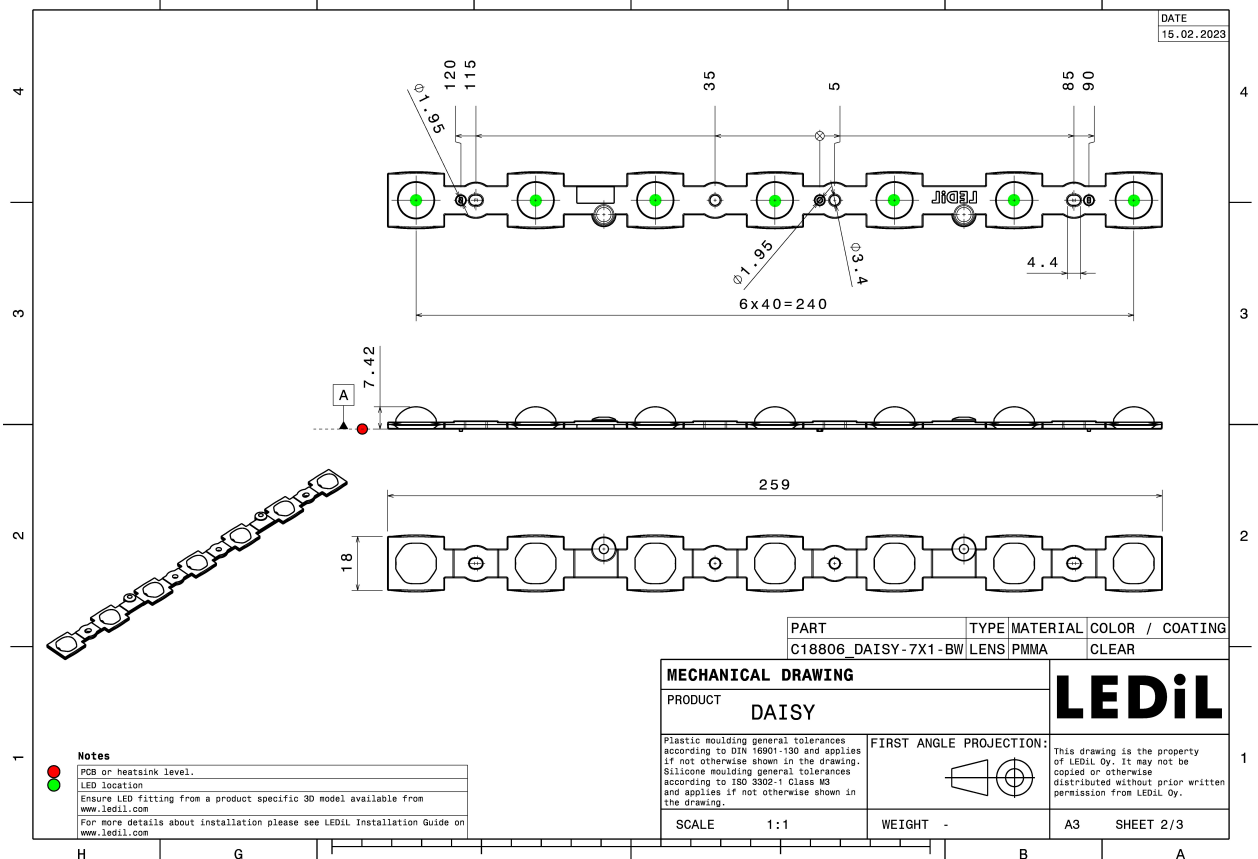
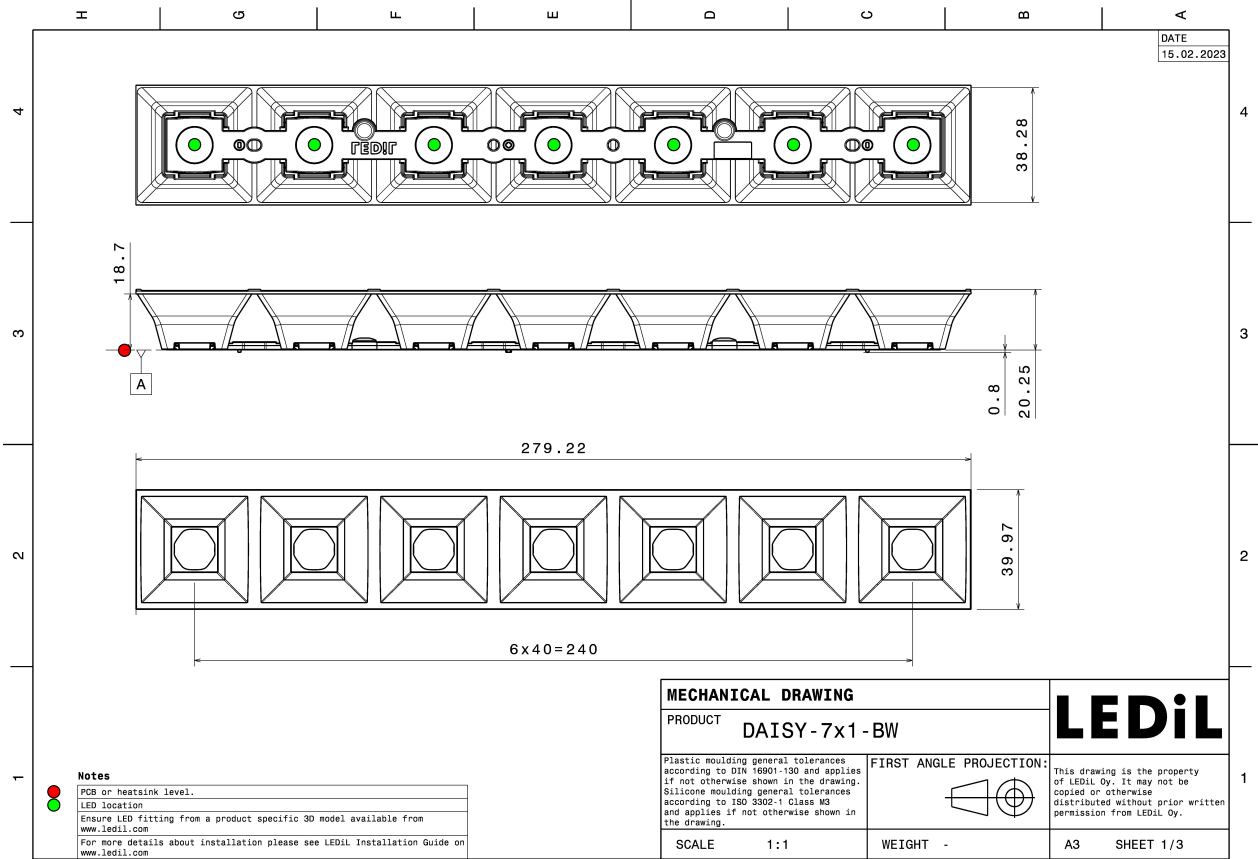
ORDERING INFORMATION:

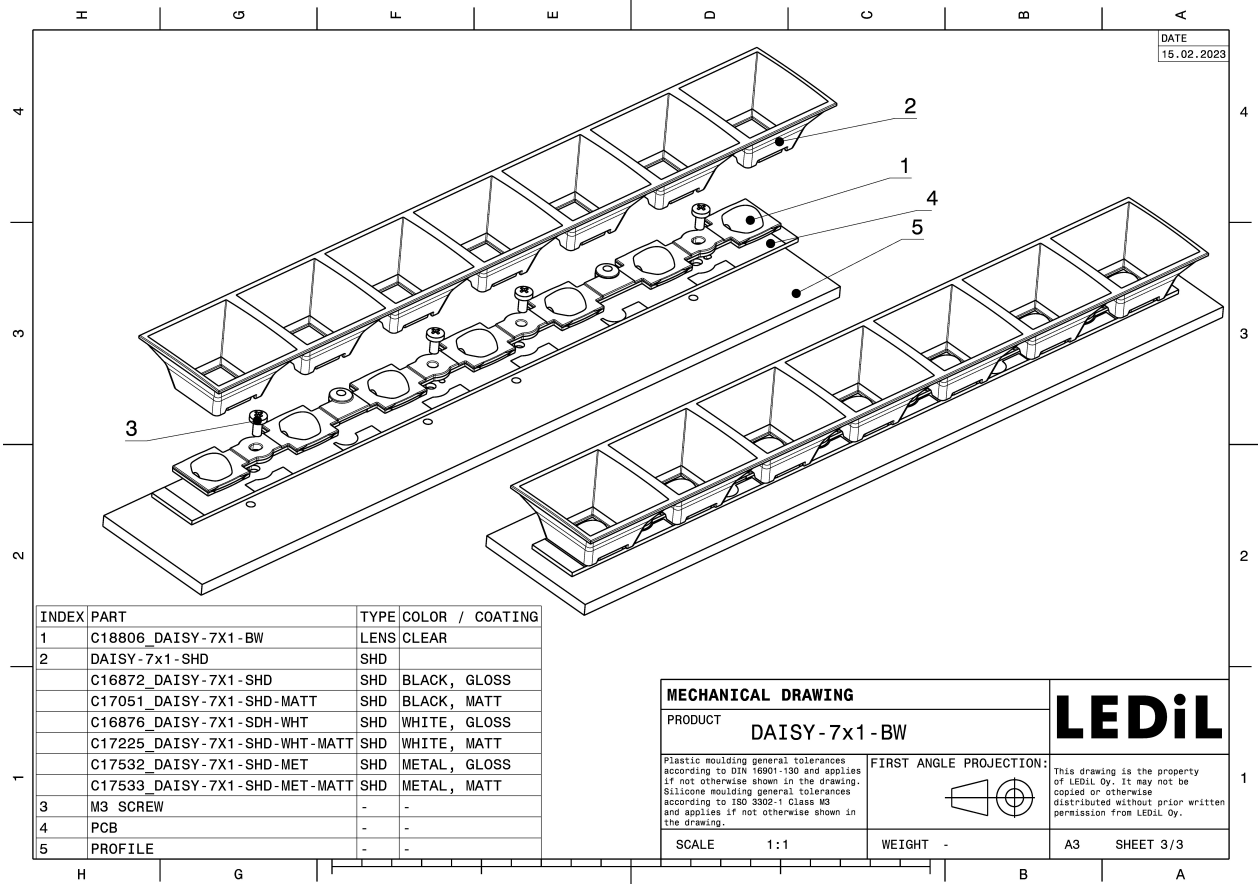
Quantities for one set:

Multi-lens	1
Shade	1

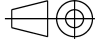


Component		Qty in box	MOQ	MPQ	Box weight (kg)
C18806_DAISY-7X1-BW » Box size: 400 x 300 x 300 mm	Multi-lens	312	312	24	5.7
C17051_DAISY-7X1-SHD-MATT » Box size: 595 x 360 x 230 mm	Shade	156	312	24	7.3
C17225_DAISY-7X1-SHD-WHT-MATT » Box size: 595 x 360 x 230 mm	Shade	156	312	24	7.6
C16872_DAISY-7X1-SHD » Box size: 595 x 360 x 230 mm	Shade	156	312	24	7.1
C18167_DAISY-7X1-SHD-MET » Box size: 595 x 360 x 230 mm	Shade	156	312	24	7.0
C16876_DAISY-7X1-SHD-WHT » Box size: 595 x 360 x 230 mm	Shade	156	312	24	7.6
C18409_DAISY-7X1-SHD-MET-MATT » Box size: 595 x 360 x 230 mm	Shade	156	312	24	7.0





INDEX	PART	TYPE	COLOR / COATING
1	C18806_DAISY-7X1-BW	LENS	CLEAR
2	DAISY-7x1-SHD	SHD	
	C16872_DAISY-7X1-SHD	SHD	BLACK, GLOSS
	C17051_DAISY-7X1-SHD-MATT	SHD	BLACK, MATT
	C16876_DAISY-7X1-SHD-WHT	SHD	WHITE, GLOSS
	C17225_DAISY-7X1-SHD-WHT-MATT	SHD	WHITE, MATT
	C17532_DAISY-7X1-SHD-MET	SHD	METAL, GLOSS
	C17533_DAISY-7X1-SHD-MET-MATT	SHD	METAL, MATT
3	M3 SCREW	-	-
4	PCB	-	-
5	PROFILE	-	-

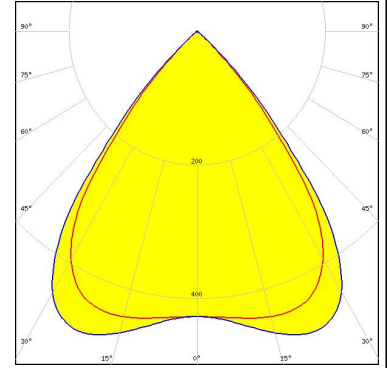
MECHANICAL DRAWING		LEDiL
PRODUCT DAISY-7x1-BW		
Plastic moulding general tolerances according to DIN 16801-130 and applies if not otherwise shown in the drawing. Silicone moulding general tolerances according to ISO 3302-1 Class M3 and applies if not otherwise shown in the drawing.	FIRST ANGLE PROJECTION: 	This drawing is the property of LEDiL Oy. It may not be copied or otherwise distributed without prior written permission from LEDiL Oy.
SCALE 1:1	WEIGHT -	A3 SHEET 3/3

See also our general installation guide: www.ledil.com/installation_guide

OPTICAL RESULTS (MEASURED):

TRIDONIC

LED LLE 24x280mm 750lm x27-x65 LVD ADV1
FWHM / FWTM Asymmetric
Efficiency 78 %
Peak intensity 0.5 cd/lm
LEDs/each optic 4
Light colour/type Tunable White
Required components:
C16872_DAISSY-7X1-SHD

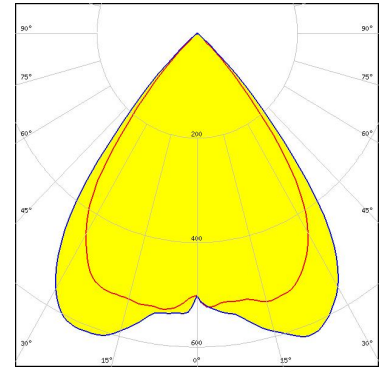


Light distribution files

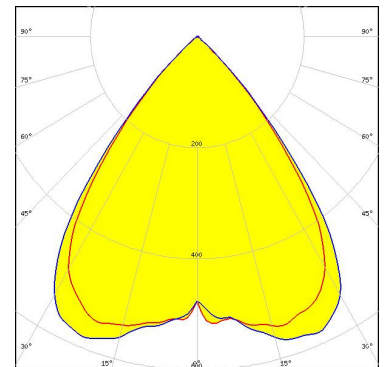
OPTICAL RESULTS (SIMULATED):



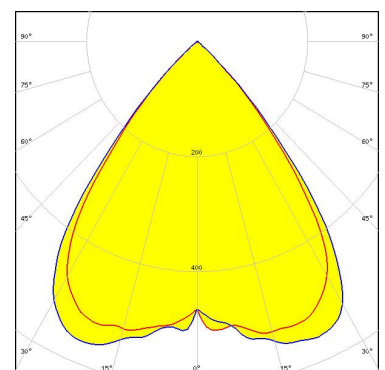
LED LUXEON 2835 Line
FWHM / FWTM 75.0 + 78.0° / 92.0 + 94.0°
Efficiency 89 %
Peak intensity 0.6 cd/lm
LEDs/each optic 4
Light colour/type White
Required components:
C16872_DAISSY-7X1-SHD



LED LinLED 280x20mm 1100lm 8x0 2C 42V Opt G1
FWHM / FWTM 78.0° / 94.0°
Efficiency 90 %
Peak intensity 0.6 cd/lm
LEDs/each optic 2
Light colour/type White
Required components:
C16876_DAISSY-7X1-SHD-WHT



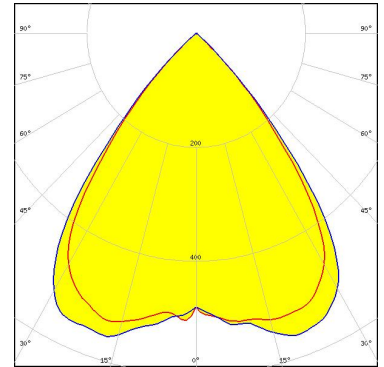
LED LinLED 280x20mm 1100lm 8x0 2C 42V Opt G1
FWHM / FWTM 78.0° / 94.0°
Efficiency 87 %
Peak intensity 0.6 cd/lm
LEDs/each optic 2
Light colour/type White
Required components:
C16872_DAISSY-7X1-SHD



OPTICAL RESULTS (SIMULATED):

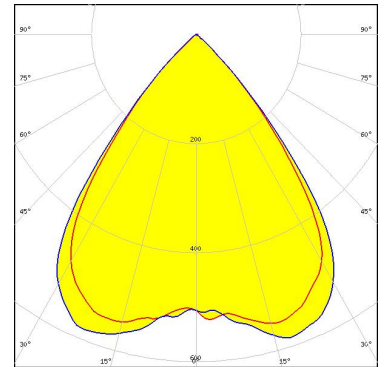
MST | *Your solutions*

LED LinLED 280x20mm 1100lm 8x0 2C 42V Opt G1
FWHM / FWTM 78.0° / 94.0°
Efficiency 87 %
Peak intensity 0.6 cd/lm
LEDs/each optic 2
Light colour/type White
Required components:
C17051_DAISSY-7X1-SHD-MATT



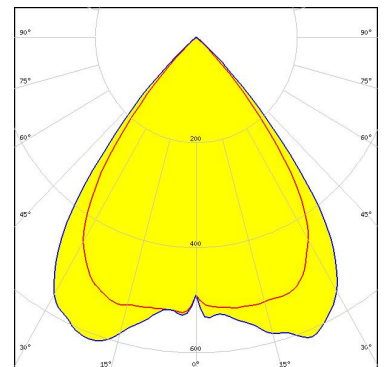
MST | *Your solutions*

LED LinLED 280x28mm 1100lm 8x0 2C 42V DAISY-7X1 G1
FWHM / FWTM 77.0° / 94.0°
Efficiency 90 %
Peak intensity 0.6 cd/lm
LEDs/each optic 4
Light colour/type White
Required components:
C17225_DAISSY-7X1-SHD-WHT-MATT



OSRAM
Opto Semiconductors

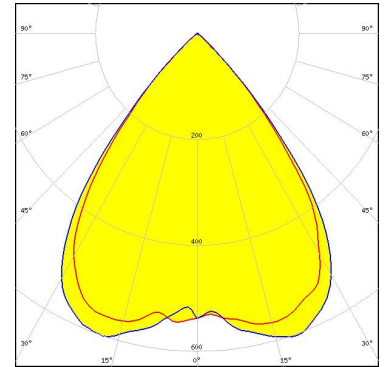
LED Duris E 2835
FWHM / FWTM 76.0 + 79.0° / 92.0 + 96.0°
Efficiency 88 %
Peak intensity 0.6 cd/lm
LEDs/each optic 4
Light colour/type White
Required components:
C16872_DAISSY-7X1-SHD



OPTICAL RESULTS (SIMULATED):

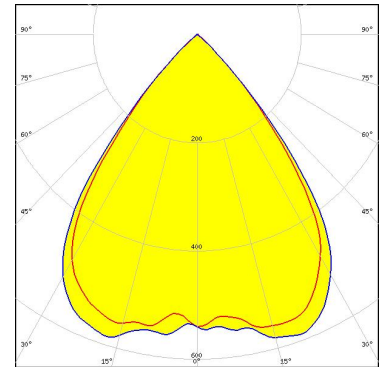
OSRAM
Opto Semiconductors

LED Duris E 2835
FWHM / FWTM 77.0° / 94.0°
Efficiency 90 %
Peak intensity 0.6 cd/lm
LEDs/each optic 4
Light colour/type White
Required components:
C17225_DAISSY-7X1-SHD-WHT-MATT



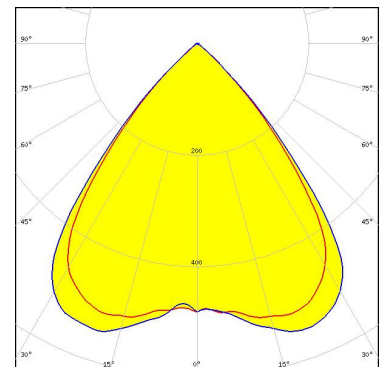
OSRAM
Opto Semiconductors

LED Duris E 2835
FWHM / FWTM 77.0° / 94.0°
Efficiency 88 %
Peak intensity 0.6 cd/lm
LEDs/each optic 4
Light colour/type White
Required components:
C17051_DAISSY-7X1-SHD-MATT



TRIDONIC

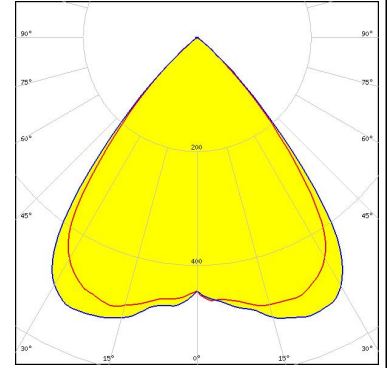
LED LLE 24x280mm 750lm 8x0 LVD ADV1
FWHM / FWTM Asymmetric
Efficiency 89 %
Peak intensity 0.6 cd/lm
LEDs/each optic 4
Light colour/type White
Required components:
C17225_DAISSY-7X1-SHD-WHT-MATT



OPTICAL RESULTS (SIMULATED):

TRIDONIC

LED	LLE 24x280mm 750lm 8x0 LVD ADV1
FWHM / FWTM	Asymmetric
Efficiency	86 %
Peak intensity	0.6 cd/lm
LEDs/each optic	4
Light colour/type	White
Required components:	
	C17051_DAISSY-7X1-SHD-MATT



GENERAL INFORMATION:

NOTE: The typical beam angle will be changed by different color, chip size and chip position tolerance. The typical total beam angle is the full angle measured where the luminous intensity is half of the peak value.

MATERIALS:

As part of our continuous research and improvement processes, and to ensure the best possible quality and availability of our products, LEDiL reserves the right to change material grades without notice.

PRODUCT DATA USER AGREEMENT AND DISCLAIMER:

The measured data in the provided downloadable LEDiL Product Datasheets and Mechanical 2D-Drawings is rounded and provided as reference for planning. LEDiL Oy's optical specifications have been verified by conducting performance testing of the products in accordance with the company's quality system. The reported data are averaged results of multiple measurements with typical variation. LEDiL Oy reserves the right to without prior notification make changes and improvements to its products.

LEDiL Oy assumes neither warranty, nor guarantee nor any other liability of any kind for the contents and correctness of the provided data. The provided data has been generated with highest diligence but the provided data may in reality not represent the complete possible variation range of all intrinsic parameters. Therefore, in certain cases a deviation from the provided data could occur.

LEDiL Oy reserves the right to undertake technical changes of its products without further notification which could lead to changes in the provided data. LEDiL Oy assumes no liability of any kind for the possible deviation from any provided data or any other damage resulting from the usage of the provided data.

The user agrees to this disclaimer and user agreement with the download or usage of the provided files.

LEDiL Oy

Joensuunkatu 13
FI-24240 SALO
Finland

LEDiL Inc.

228 West Page Street
Suite D
Sycamore IL 60178
USA

Ledil Optics Technology (Shenzhen) Co., Ltd.

405 , Block B
Casic Motor Building
Shenzhen 518057
P.R.CHINA

Local sales and technical support

[www.ledil.com/
where_to_buy](http://www.ledil.com/where_to_buy)

Shipping locations

Salo, Finland
Hong Kong, China

Distribution Partners

[www.ledil.com/
where_to_buy](http://www.ledil.com/where_to_buy)