

STRADELLA-8-HV-CSP-T2-M

IESNA Type II (medium) beam with excellent back light control, illuminance uniformity and cutoff. Variant with improved creepage distance for high voltage circuit design.

SPECIFICATION:

Dimensions	50.0 x 50.0 mm
Height	4.9 mm
Fastening	screw
ROHS compliant	yes ⓘ

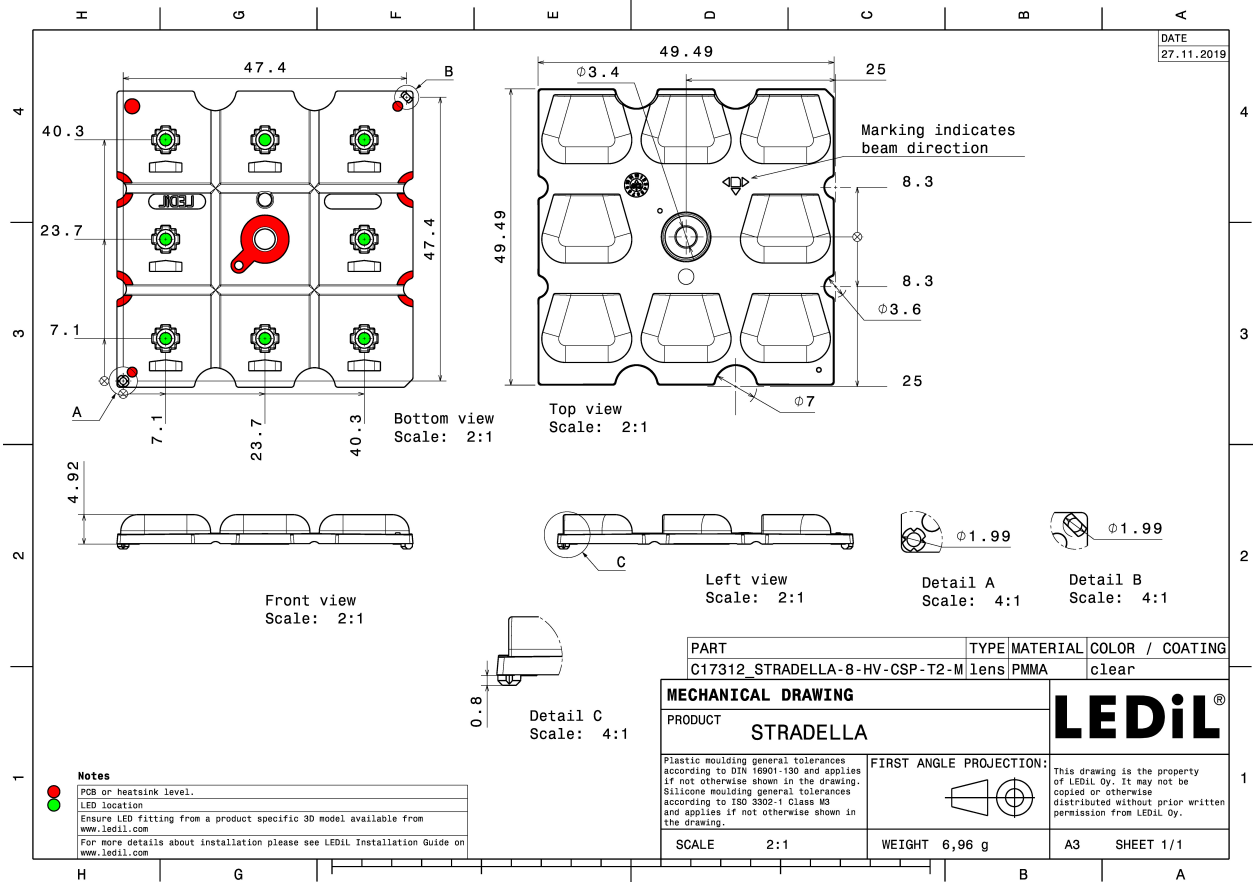


MATERIALS:

Component	Type	Material	Colour	Finish	Length
STRADELLA-8-HV-CSP-T2-M	Multi-lens	PMMA			50.0

ORDERING INFORMATION:

Component	Qty in box	MOQ	MPQ	Box weight (kg)
C17312_STRADELLA-8-HV-CSP-T2-M » Box size: 480 x 280 x 300 mm	800	160	160	6.4

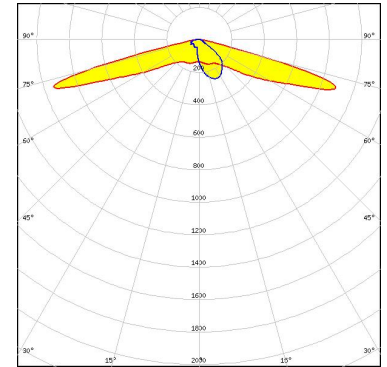


See also our general installation guide: www.ledil.com/installation_guide

OPTICAL RESULTS (MEASURED):

PHILIPS

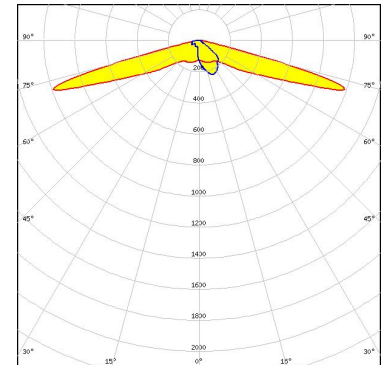
LED Fortimo FastFlex LED 4x8up PR G5
FWHM / FWTM Asymmetric
Efficiency 97 %
Peak intensity 1.4 cd/lm
LEDs/each optic 1
Light colour/type White
Required components:



Light distribution files

SAMSUNG

LED LH151B
FWHM / FWTM Asymmetric
Efficiency 94 %
Peak intensity 2.1 cd/lm
LEDs/each optic 1
Light colour/type White
Required components:



Light distribution files

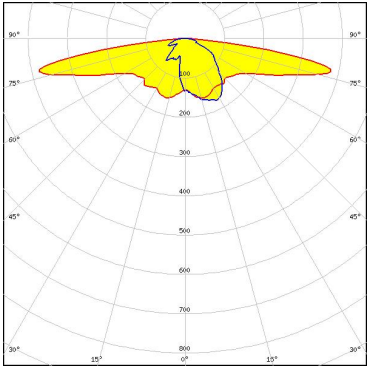
OPTICAL RESULTS (SIMULATED):

LUMILEDS

LED	LUXEON C
FWHM / FWTM	Asymmetric
Efficiency	68 %
Peak intensity	0.6 cd/lm
LEDs/each optic	1
Light colour/type	White

Required components:

Protective plate, glass



Light distribution files

LUMILEDS

LED	LUXEON CZ
FWHM / FWTM	Asymmetric
Efficiency	91 %
Peak intensity	1.3 cd/lm
LEDs/each optic	1
Light colour/type	White

Required components:



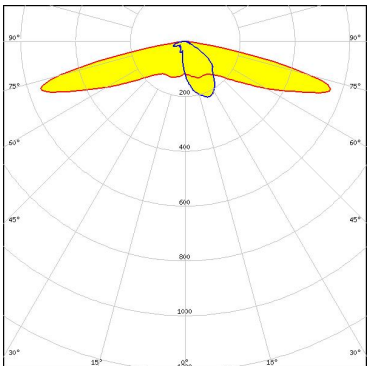
Light distribution files

LUMILEDS

LED	LUXEON HL2Z
FWHM / FWTM	Asymmetric
Efficiency	76 %
Peak intensity	0.7 cd/lm
LEDs/each optic	1
Light colour/type	White

Required components:

Protective plate, glass

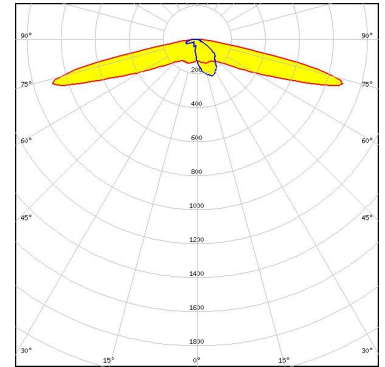


Light distribution files

OPTICAL RESULTS (SIMULATED):



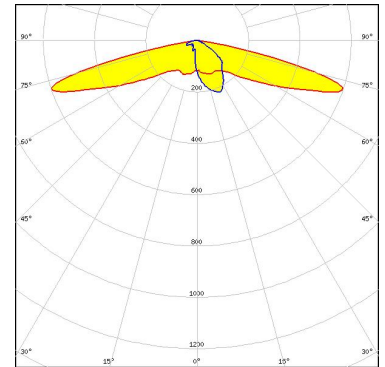
LED LUXEON HL2Z
 FWHM / FWTM Asymmetric
 Efficiency 92 %
 Peak intensity 1.2 cd/lm
 LEDs/each optic 1
 Light colour/type White
 Required components:



Light distribution files



LED NVSxE21A
 FWHM / FWTM Asymmetric
 Efficiency 76 %
 Peak intensity 0.8 cd/lm
 LEDs/each optic 1
 Light colour/type White
 Required components:

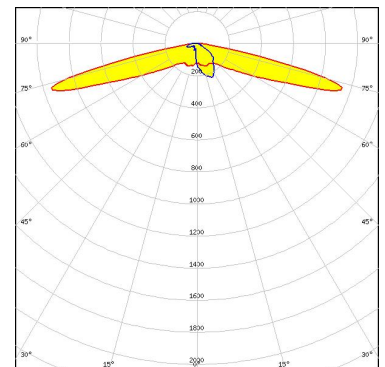


Protective plate, glass

Light distribution files



LED NVSxE21A
 FWHM / FWTM Asymmetric
 Efficiency 93 %
 Peak intensity 1.3 cd/lm
 LEDs/each optic 1
 Light colour/type White
 Required components:



Light distribution files

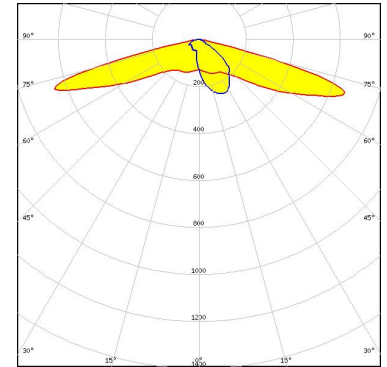
OPTICAL RESULTS (SIMULATED):

PHILIPS

LED	Fortimo FastFlex LED 4x8up PR G5
FWHM / FWTM	Asymmetric
Efficiency	82 %
Peak intensity	0.9 cd/lm
LEDs/each optic	1
Light colour/type	White
Required components:	

Protective plate, glass

Light distribution files

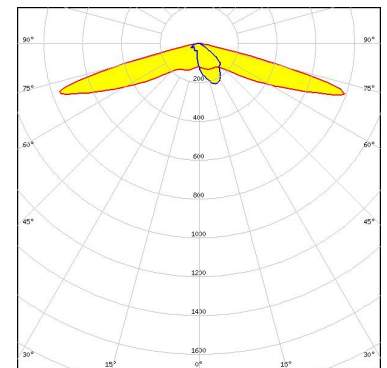


SAMSUNG

LED	LH151B
FWHM / FWTM	Asymmetric
Efficiency	79 %
Peak intensity	1.1 cd/lm
LEDs/each optic	1
Light colour/type	White
Required components:	

Protective plate, glass

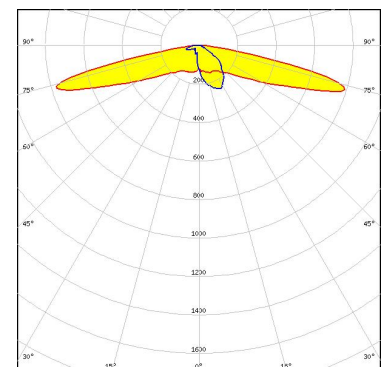
Light distribution files



SAMSUNG

LED	LH181B
FWHM / FWTM	Asymmetric
Efficiency	92 %
Peak intensity	1.1 cd/lm
LEDs/each optic	1
Light colour/type	White
Required components:	

Light distribution files



GENERAL INFORMATION:

NOTE: The typical beam angle will be changed by different color, chip size and chip position tolerance. The typical total beam angle is the full angle measured where the luminous intensity is half of the peak value.

MATERIALS:

As part of our continuous research and improvement processes, and to ensure the best possible quality and availability of our products, LEDiL reserves the right to change material grades without notice.

PRODUCT DATA USER AGREEMENT AND DISCLAIMER:

The measured data in the provided downloadable LEDiL Product Datasheets and Mechanical 2D-Drawings is rounded and provided as reference for planning. LEDiL Oy's optical specifications have been verified by conducting performance testing of the products in accordance with the company's quality system. The reported data are averaged results of multiple measurements with typical variation. LEDiL Oy reserves the right to without prior notification make changes and improvements to its products.

LEDiL Oy assumes neither warranty, nor guarantee nor any other liability of any kind for the contents and correctness of the provided data. The provided data has been generated with highest diligence but the provided data may in reality not represent the complete possible variation range of all intrinsic parameters. Therefore, in certain cases a deviation from the provided data could occur.

LEDiL Oy reserves the right to undertake technical changes of its products without further notification which could lead to changes in the provided data. LEDiL Oy assumes no liability of any kind for the possible deviation from any provided data or any other damage resulting from the usage of the provided data.

The user agrees to this disclaimer and user agreement with the download or usage of the provided files.

LEDiL Oy

Joensuunkatu 13
FI-24240 SALO
Finland

LEDiL Inc.

228 West Page Street
Suite D
Sycamore IL 60178
USA

Ledil Optics Technology (Shenzhen) Co., Ltd.

405 , Block B
Casic Motor Building
Shenzhen 518057
P.R.CHINA

Local sales and technical support

[www.ledil.com/
where_to_buy](http://www.ledil.com/where_to_buy)

Shipping locations

Poznan, Poland
Hong Kong, China

Distribution Partners

[www.ledil.com/
where_to_buy](http://www.ledil.com/where_to_buy)