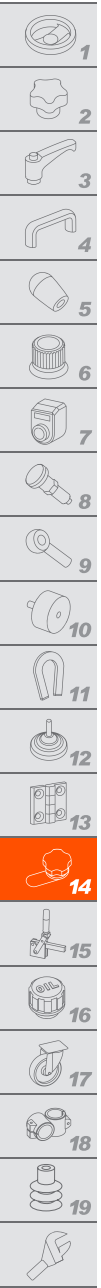


# CS. | Lever latches with key

Lock, zinc alloy



## 1 STATOR

Brass-plated zinc alloy.

## 2 ROTOR

Chrome-plated zinc alloy.

## 3 FRONT PLATE

Stainless steel.

## 4 NUT

M19x1 in brass.

## 5 FLAT SPRING WASHER

Zinc-plated steel (only for l1=13 and 16 mm),

## 6 INTERNAL TOOTHED WASHER

Zinc-plated steel.

## 7 CLOSING LEVER

Zinc-plated steel, thickness 2.5 mm.

Assembly by means of hexagon nut M6x0.75 for l1=13, 16 and 18 mm, assembly with screw M5x5 for l1=20 mm or with screw M5x8 for l1=25 and 30 mm.

## 8 TWO KEYS

Nickel-plated brass, removable in two positions at 180°.

## 9 ROTATION

180°.

## 10 STANDARD EXECUTIONS

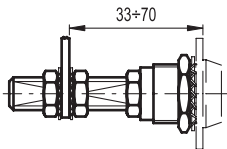
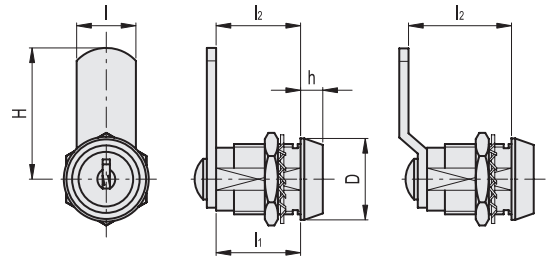
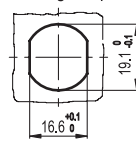
- **CS.**: lock with 400 different combinations. Each lock has a couple of keys with different combination.
- **CSU.**: lock with one combination. All locks have the same combination and can be opened with the same key.

## 11 SPECIAL EXECUTIONS AND ACCESSORIES

- Closing levers in other dimensions.
- Brass threaded extension for prolonged positioning of the lever, only for stator lengths l1 = 25 and 30 mm (code 421137 C.PQ M5/58).



Drilling template



## CS.

Code	Description	D	H	l	l1	l2	h	△△
421411	CS.13-32-13	23	32	16	13	13	5	41
421413	CS.16-32-16	23	32	16	16	16	5	47
421415	CS.20-32-20	23	32	16	20	20	5	55
421417	CS.25-32-25	23	32	16	25	25	5	64
421419	CS.30-32-30	23	32	16	30	30	5	73
421431	CS.13-36-18	23	35.5	16	13	18	5	43
421433	CS.16-36-21	23	35.5	16	16	21	5	49
421435	CS.20-36-25	23	35.5	16	20	25	5	57
421437	CS.25-36-30	23	35.5	16	25	30	5	66
421439	CS.30-36-35	23	35.5	16	30	35	5	75

## CSU.

Code	Description	D	H	l	l1	l2	h	△△
421451	CSU.13-32-13	23	32	16	13	13	5	41
421453	CSU.16-32-16	23	32	16	16	16	5	47
421455	CSU.20-32-20	23	32	16	20	20	5	55
421457	CSU.25-32-25	23	32	16	25	25	5	64
421459	CSU.30-32-30	23	32	16	30	30	5	73
421471	CSU.13-36-18	23	35.5	16	13	18	5	43
421473	CSU.16-36-21	23	35.5	16	16	21	5	49
421475	CSU.20-36-25	23	35.5	16	20	25	5	57
421477	CSU.25-36-30	23	35.5	16	25	30	5	66
421479	CSU.30-36-35	23	35.5	16	30	35	5	75

Latches

1390