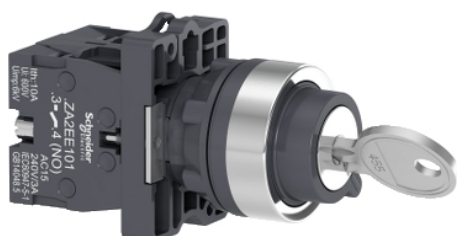


XA2EG43

Complete selector switch, Easy Harmony XA2, plastic, black, 22mm, key 455, 2 positions, stay put, 2NO



Main

Range of Product	Easy Harmony XA2
Product or Component Type	Complete selector switch
Device short name	XA2
Bezel material	Plastic
Fixing collar material	Plastic
Mounting diamete	0.89 in (22.5 mm)

Complementary

Fixing center	$\geq 30 \times 40$ mm panel) 0.04...0.20 in (1...5 mm)
Fixing mode	Fixing nut 17.70...21.24 lbf.in (2...2.4 N.m)
Type of operator	Stay put
Operator profile	Key switch
Operator position information	2 positions 90°
Key number	455
Key withdrawal position	Left and right
Contacts type and composition	2 NO
Contact operation	Slow-break
Mechanical durability	100000 cycles
Connections - terminals	$\leq 2 \times 1.5$ mm ² $\leq 1 \times 2.5$ mm ² $\geq 1 \times 0.5$ mm ² Faston terminals 6.3 mm
Tightening torque	7.08 lbf.in (0.8 N.m)
Short-circuit protection	10 A fuse gL IEC 60269-1
[Ith] conventional free air thermal current	10 A
[Ui] rated insulation voltage	600 V
[Uimp] rated impulse withstand voltage	6 kV IEC 60947-1
[Ie] rated operational current	3 A 240 V, AC-15, A600 0.27 A 250 V, DC-13, Q600
Electrical durability	500000 Cycles, AC-15, 3 A 230 V 60 cyc/mn 0.5 IEC 60947-5-4 500000 cycles, DC-13, 0.2 A 110 V 60 cyc/mn 0.5 IEC 60947-5-4
Electrical reliability	$\Lambda < 10\exp(-8)$ 24 V
Width	1.18 in (30 mm)
Height	1.65 in (42 mm)
Depth	3.37 in (85.7 mm)
Net Weight	0.17 lb(US) (0.078 kg)
Type of operator	Stay put
Operator profile	Key switch
Head type	Standard

The information provided in this documentation contains general descriptions and/or technical characteristics of the performance of the products contained herein. This documentation is not intended as a substitute for and is not to be used for determining suitability or reliability of these products for specific user applications. It is the duty of any such user or integrator to perform the appropriate and complete risk analysis, evaluation and testing of the products with respect to the relevant specific application or use thereof. Neither Schneider Electric Industries SAS nor any of its affiliates or subsidiaries shall be responsible or liable for misuse of the information contained herein.

Environment

Protective treatment	TC
Ambient Air Temperature for Storage	-40...158 °F (-40...70 °C)
Ambient air temperature for operation	-4...131 °F (-20...55 °C)
Overvoltage category	Class I IEC 536
IP degree of protection	IP54 IEC 60529
IK degree of protection	IK03 IEC 60529
Standards	IEC 60947-1 GB 14048.1 GB 14048.5 IEC 60947-5-1
Product Certifications	CE[RETURN]CCC
Vibration resistance	10 gn 40...500 Hz)IEC 60068-2-6
Shock resistance	70 gn 11 ms) half sine wave acceleration IEC 60068-2-27

Ordering and shipping details




Category	US1CP4B22153
Discount Schedule	CP4B
GTIN	3606480673948
Returnability	No
Country of origin	CN

Packing Units

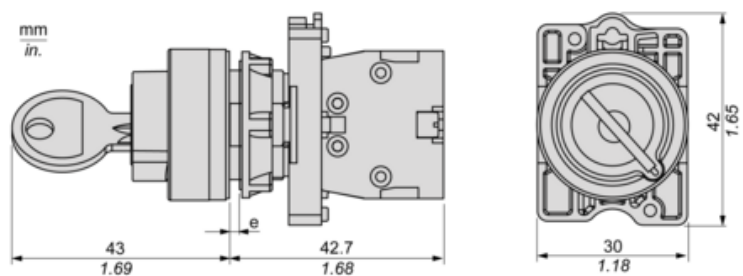
Unit Type of Package 1	PCE
Number of Units in Package 1	1
Package 1 Height	1.38 in (3.500 cm)
Package 1 Width	2.17 in (5.500 cm)
Package 1 Length	2.28 in (5.800 cm)
Package 1 Weight	2.72 oz (77.000 g)
Unit Type of Package 2	S02
Number of Units in Package 2	100
Package 2 Height	5.91 in (15.000 cm)
Package 2 Width	11.81 in (30.000 cm)
Package 2 Length	15.75 in (40.000 cm)
Package 2 Weight	17.59 lb(US) (7.980 kg)
Unit Type of Package 3	P06
Number of Units in Package 3	1600
Package 3 Height	29.53 in (75.000 cm)
Package 3 Width	31.50 in (80.000 cm)
Package 3 Length	23.62 in (60.000 cm)
Package 3 Weight	299.12 lb(US) (135.680 kg)

Offer Sustainability

Sustainable offer status	Green Premium product
California proposition 65	WARNING: This product can expose you to chemicals including: Lead and lead compounds, which is known to the State of California to cause cancer and birth defects or other reproductive harm. For more information go to www.P65Warnings.ca.gov
REACH Regulation	 REACH Declaration
REACH free of SVHC	Yes
EU RoHS Directive	Pro-active compliance (Product out of EU RoHS legal scope)  EU RoHS Declaration
Mercury free	Yes
China RoHS Regulation	 China RoHS Declaration

RoHS exemption information	 Yes
Environmental Disclosure	 Product Environmental Profile
Circularity Profile	 End Of Life Information
WEEE	The product must be disposed on European Union markets following specific waste collection and never end up in rubbish bins.

Dimensions



(e) Clamping thickness: 1 to 6 mm / 0.04 to 0.24 in.

Panel Cut-out for Pushbuttons, Switches and Pilot Lights (Finished Holes, Ready for Installation)

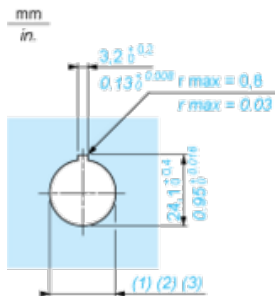
Connection by Screw Clamp Terminals



- (1) Diameter on finished panel or support
(2) For selector switches and Emergency stop buttons, use of an anti-rotation plate type ZB5AZ902 is recommended.
(3) Ø22.5 mm recommended ($\text{Ø}22.3_0^{+0.4}$) / Ø0.89 in. recommended ($\text{Ø}0.88 \text{ in.}_0^{+0.016}$)

Connections	a in mm	a in in.	b in mm	b in in.
By screw clamp terminals connector	40	1.57	30	1.18
By Faston connectors	45	1.77	32	1.26

Detail of Lug Recess



- (1) Diameter on finished panel or support
(2) For selector switches and Emergency stop buttons, use of an anti-rotation plate type ZB5AZ902 is recommended.
(3) Ø22.5 mm recommended ($\text{Ø}22.3_0^{+0.4}$) / Ø0.89 in. recommended ($\text{Ø}0.88 \text{ in.}_0^{+0.016}$)