

THIS INFORMATION IS CONFIDENTIAL AND PROPRIETARY TO CW INDUSTRIES INCORPORATED AND ITS AFFILIATES. IT MAY NOT BE DISCLOSED TO ANYONE OTHER THAN CW INDUSTRIES PERSONNEL, WITHOUT WRITTEN AUTHORIZATION FROM CW INDUSTRIES INCORPORATED, SOUTHAMPTON, PENNSYLVANIA USA.

F

F

D

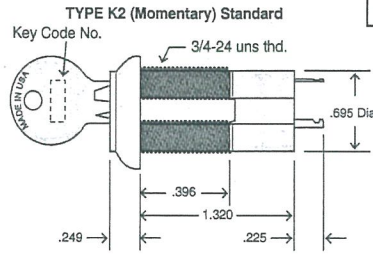
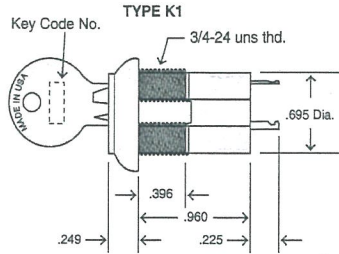
C

B

A

SINGLE POLE

Keylock Option	Lock Diagram	Key Position	Terminals Connected
100		1	8-1
101			1-3
102			
107		1	7-1
108		3	3-1
		5	6-7
118		1	8-1
		2	1-2
		4	7-8
K2 Series		1	7-1
		2 (Mom)	1-2
		5	6-7
			1
2 (Mom)	1-2		
118		1	8-1
		2 (Mom)	1-2
		4 (Mom)	7-8



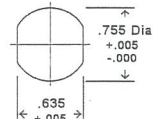
DOUBLE POLE

Keylock Option No.	Lock Diagram	Key Position	Terminals Connected
K1 Series		1	8-1, 4-5
			1-3, 5-7
K2 Series		1	8-1, 4-5
			2
		2 (Mom)	7-8, 3-4
201		2 (Mom)	8-1, 4-5
			1-2, 5-6
206		2 (Mom)	8-1, 4-5
			1-2, 5-6
		4 (Mom)	7-8, 3-4

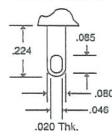


Terminal numbers molded on bottom of switch.

Panel Mounting

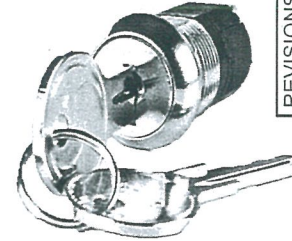


Terminal Standard



DIMENSIONS IN INCHES (MILLIMETERS)
DO NOT SCALE DRAWING

Dwg. No. KEYLOCK SERIES	
REVISIONS	0 New. DW 4/10/23 CH 4/11/23
	1 Redrawn. Added Key Code to Order Chart. DW 8/22/23



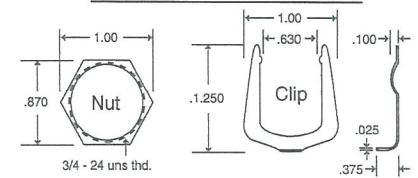
Electrical/Mechanical Specifications:
 Contact ratings: 8A 125VAC, 4A 28VDC, 4A 250VAC; UL Recognized.
 4A 125VAC, 4A 28VDC, 2A 250VAC; CSA Certified.
 Electrical life: 10,000 cycles min. at full load.
 Indexing: 45° or 90°, single-pole styles 3 positions max.,
 double-pole styles 3 positions max.,
 various key pull positions available.

Materials & Features:
 Lock: Five tumbler brass mechanism - Zinc alloy nickel plated.
 Face / Shell: Zinc Alloy nickel plated (std.); stainless steel optional.
 Switch Housing: 6/6 Nylon (UL94V-2).

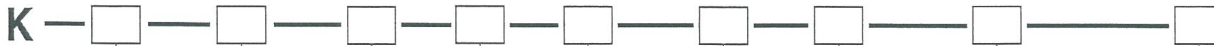
= Key Removable in this position.

Mounting Options

Panel Nut: .250 in. max.
 Thickness Clip: .065 - .090 in.



Ordering Information:



- | | | | | | | | | |
|--|--|----------------------------------|--|---|--|--------------------------------------|---|---|
| Series
1= Maintained Action
2= Momentary Action | Keylock Option No.
Corresponds to lock diagram | Lock Style
S= Standard | Keying
1= No code stamp on lock (Std.) | Finish
S= Standard Nickel Plating | Terminal
1= Standard 4= Wire leads (6" Black 22 AWG) | Mounting
N= Nut
C= Clip | Contact Material & Rating
1= Copper, Silver Plated (Standard)
2= Copper, Silver Plated (UL/CSA approved)
3= Gold Plated (Consult Factory) | Key Code
Blank Code OC01
126 Code A126
45 Code T45
7021 Code 17021
06 Code OC06
* K2 Series Only |
|--|--|----------------------------------|--|---|--|--------------------------------------|---|---|

KEYING: Two matching keys are provided with each switch lock. All K-Series switches come with 2 keys, keyed alike. Nickel plated with code number. All locks in a individual order will be keyed alike (Ex. OC01) unless otherwise specified at time of order. When it is necessary to reorder a specific key code (Ex. OC01), please include the key code when ordering.

Note: Keylock switches may be custom configured to customer requirements, including multiple key codes and wire harness assemblies.

Consult factory for additional Key Codes.

 A Unit of Electro Switch Corp. TOLERANCES UNLESS OTHERWISE SPECIFIED 2 Place Decimal ± .010 METRIC 3 Place Decimal ± .005 1 Place Dec. ± .25mm Angles ± 1' 2 Place Dec. ± .13mm		Title: K SERIES SINGLE POLE AND DOUBLE POLE KEYLOCKS
Made for: CW/OSLO	Division: Switch	
Drawn by: DW 4/10/2023	Checked by: G. Gald 8-22-23	Dep. No. KEYLOCK SERIES
Approval: [Signature] 8/22/23		

1 2 3 4 5 6 7 8 9 10

MASTER