

MATING: ① INSERTING (25°) → ② ROTATING → ③ FIXED
 UNMATING: ④ UNFIXED → ⑤ ROTATING → ⑥ WITHDRAWAL

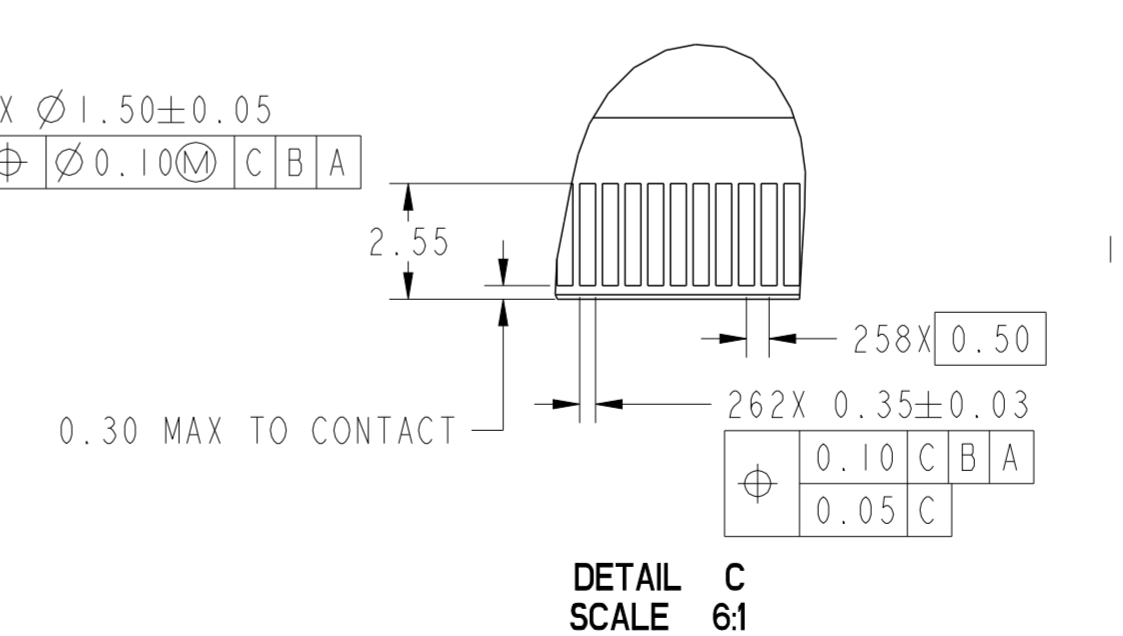
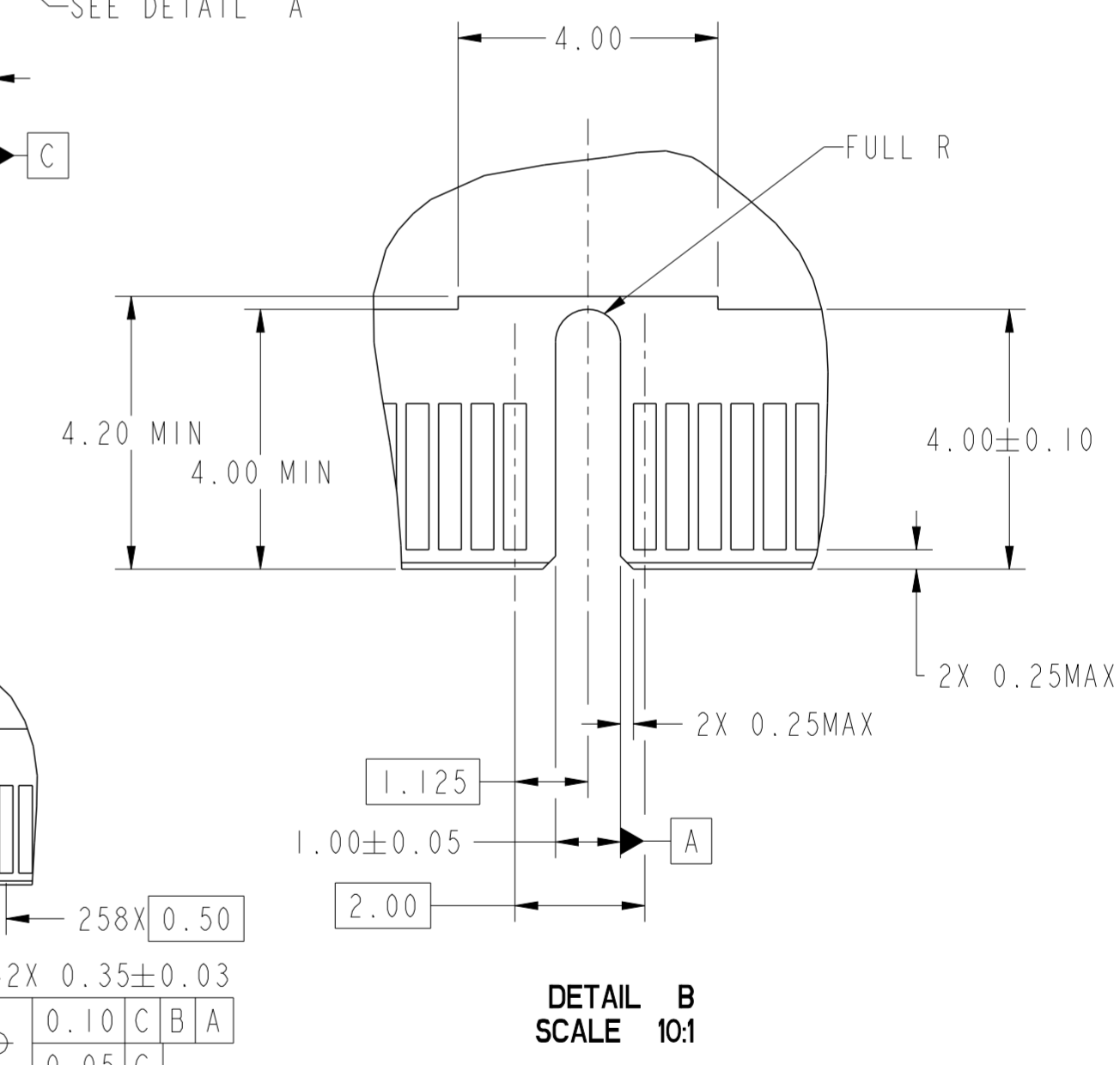
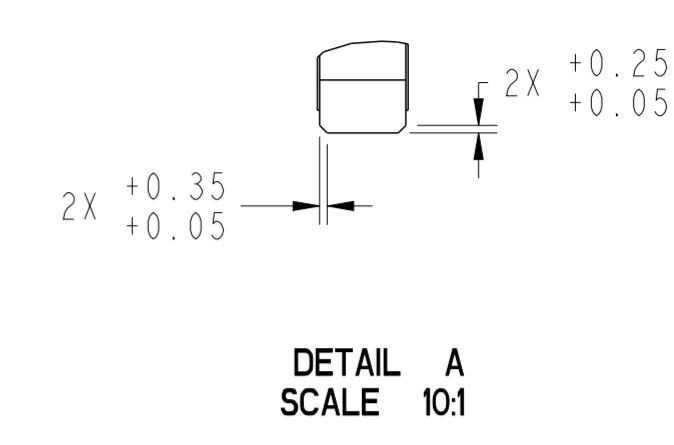
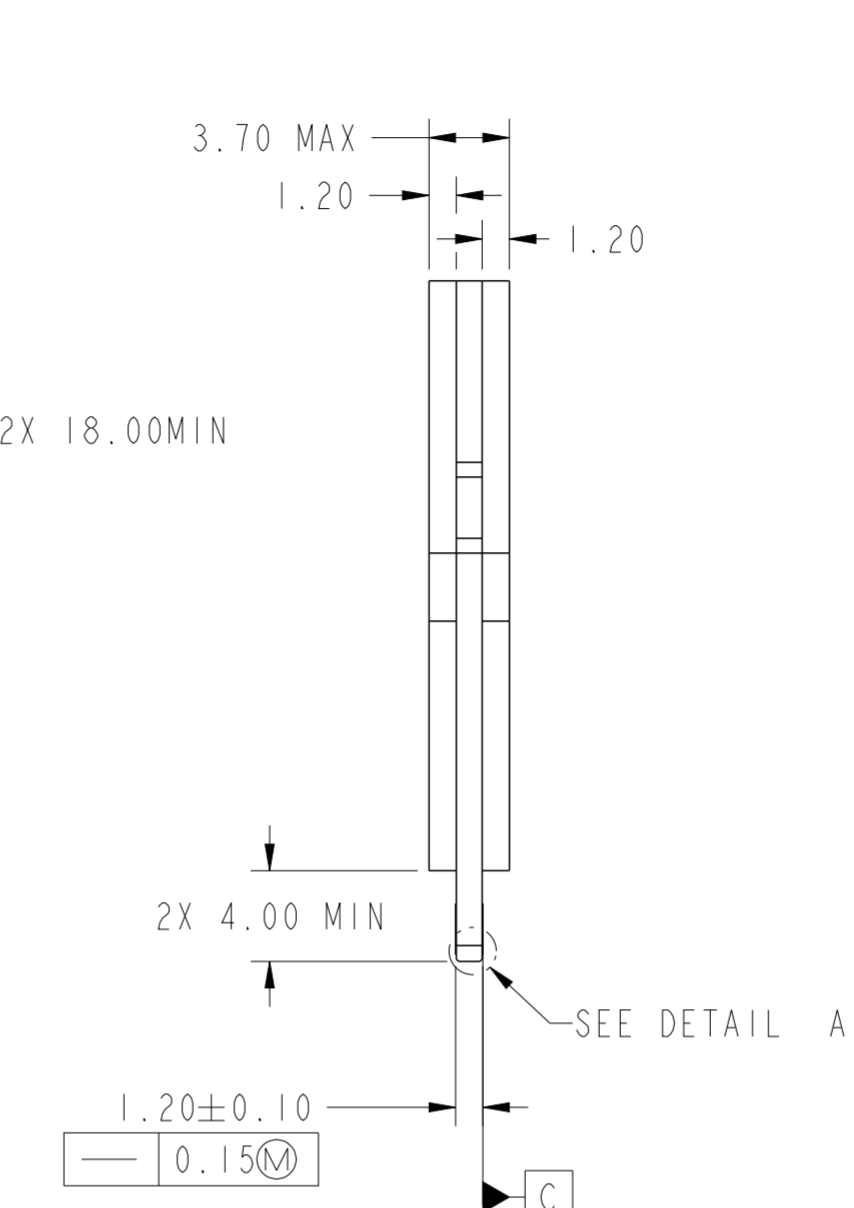
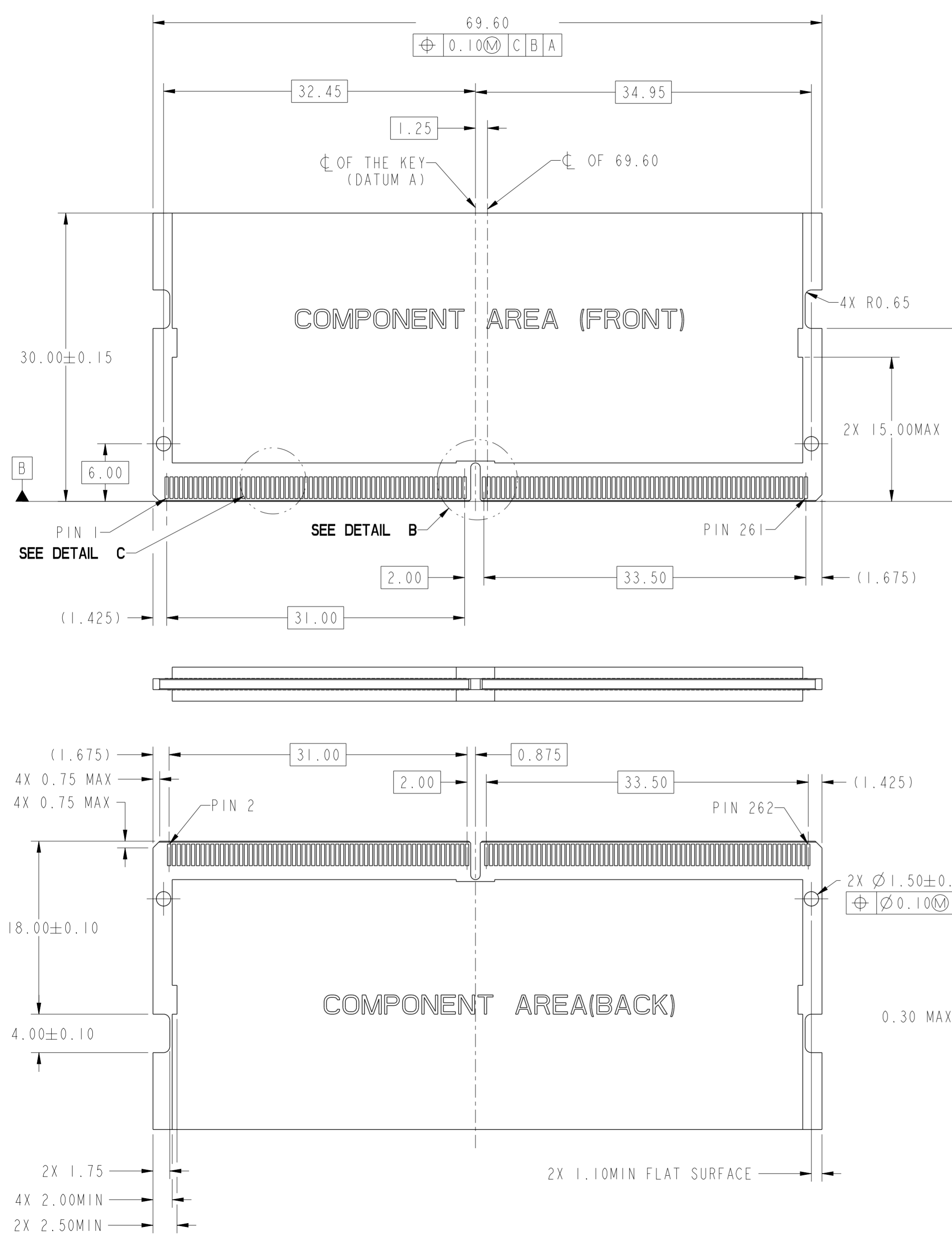
PRELIMINARY

spec ref	dr	He-Jie Zhang	2021/12/22	projection	MM	size	A2	scale	1:1
tolerance std	eng		2021/12/22			ecn no	-	rel level	Preliminary
ASME_Y14.5	chr								
TOLERANCES UNLESS OTHERWISE SPECIFIED		Amphenol FCI		product family		DDR5 SODIMM R/A 262PIN		cat. no.	
surface	linear	0.X	±0.30	title		8.0H_RVS_ASS		dwg no	
		0.XX	±0.20	Product - Customer Drw		10162981		sheet 1 of 4	
		0.XXX	±0.10	rev		1			
ASME_Y14.5	angular	0°	±2°	Product - Customer Drw		sheet 1 of 4			

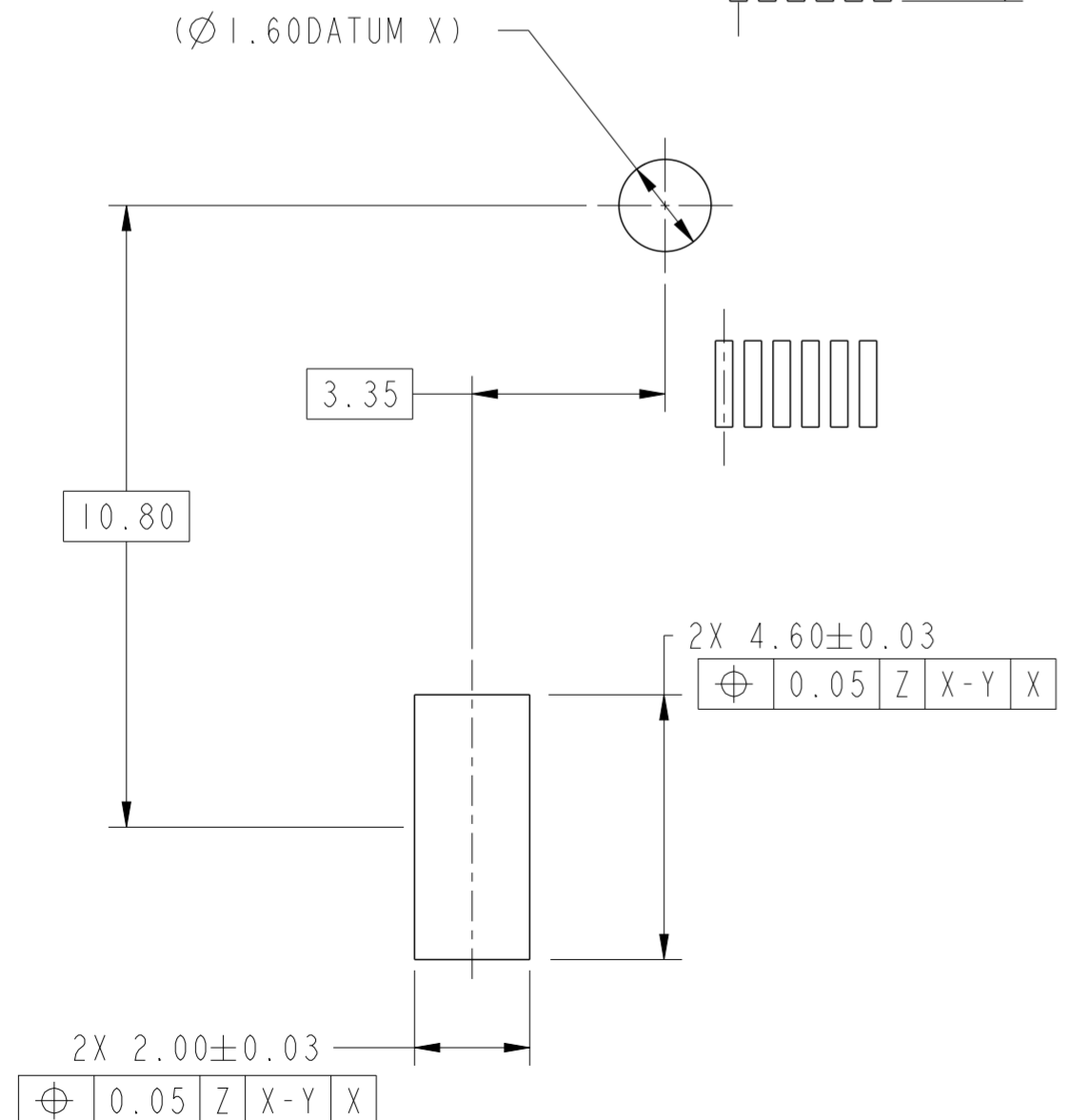
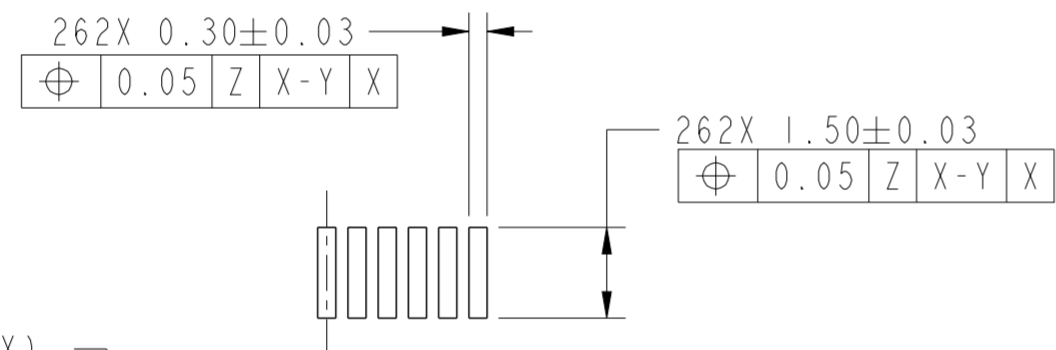
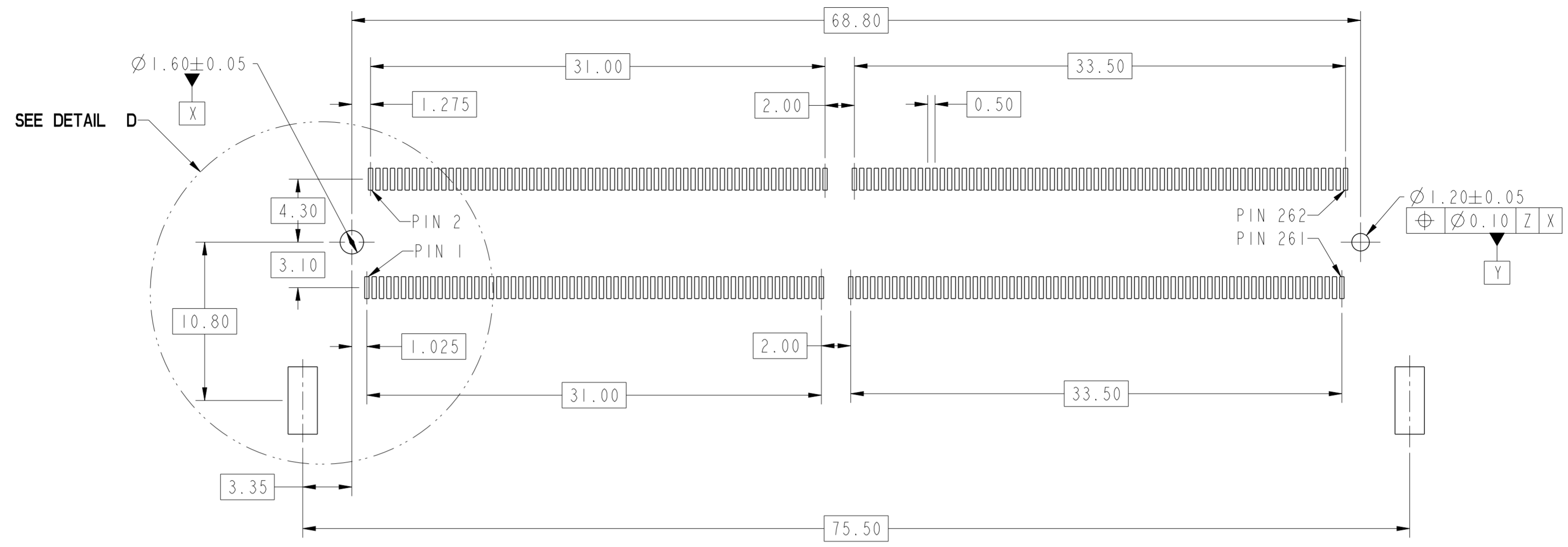
Amphenol FCI

© 2020 Amphenol Corporation

© 2020 Amphenol Corporation
Amphenol FCI



spec ref	dr	He-Jie Zhang	2021/12/22	projection	MM	size	A2	scale	1:1	
tolerance std	eng	-	2021/12/22			ecn no	-	rel level	Preliminary	
ASME_Y14.5	chr	-	apppr							-
TOLERANCES UNLESS OTHERWISE SPECIFIED										
surface	linear	0.X	±0.30	Amphenol FCI	title DDR5 SODIMM R/A 262PIN 8.0H_RVS_ASS	dwg no 10162981	rev 1	Product - Customer Drw	sheet 2 of 4	
ASME_Y14.5	angular	0.XX	±0.20							
		0.XXX	±0.10							
		0°	±2°	cat. no.						



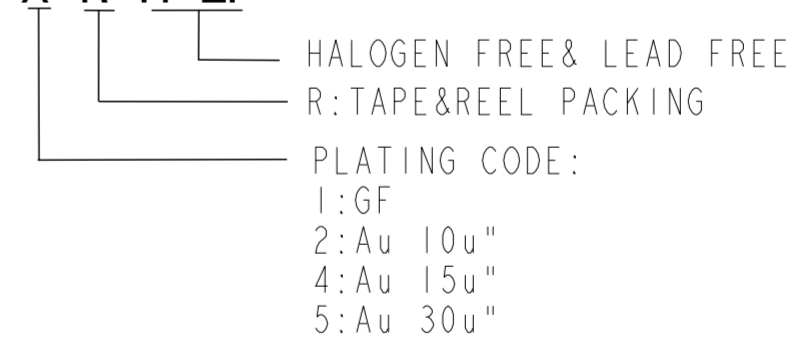
DETAIL D
SCALE 8:1

spec ref	dr	He-Jie Zhang	2021/12/22	projection	MM	size	A2	scale	1:1			
tolerance std	eng	-	2021/12/22			ecn no	-	rel level	Preliminary			
ASME_Y14.5	chr	-	ASME_Y14.5									
TOLERANCES UNLESS OTHERWISE SPECIFIED												
surface	linear	0.X	±0.30			title	DDR5 SODIMM R/A 262PIN		dwg no	10162981	rev	1
ASME_Y14.5	angular	0°	±2°	cat. no.		8.0H_RVS_ASS		Product - Customer Drw		sheet 3 of 4		

- NOTES:
1. MATERIAL:
 - 1.1 HOUSING:HIGH TEMPERATURE MATERIAL ,COLOR:BLACK.
 - 1.2 CONTACT:COPPER ALLOY.
 - 1.3 LATCH:STAINLESS STEEL.
 2. FINISH:
 - 2.1 CONTACT: GOLD FLASH PLATING ON SOLDERTAIL.
GOLD PLATING (THICKNESS SEE PART NUMBER DESCRIPTION)
ON CONTACT AREA.
 - 2.2 LATCH: NICKEL PLATING ALL OVER
 3. PRODUCT SPECIFICATION:GS-12-1667
 4. PACKAGE SPECIFICATION:GS-14-786
 5. PRODUCT MARKING,(PART NUMBER&LOT CODE),ON THIS SURFACE
 6. LEAD FREE PRODCUT MEETS THE EUROPEAN UNION DRECTIVES&OTHER COUNTRY REGULATIONS AS DESCRIBED IN GS-47-0004
 7. THE CONNECTOR WILL WITHSTAND EXPOSURE TO 260°C PEAK TEMPERATURE FOR 10-30 SECONDS IN CONVECTION,INFAR-RED ,OR VAPOR PHASE REFLOW OVEN

PART NUMBER DESCRIPTION:

10162981-0 0 X R H LF



Amphenol FCI

© 2020 Amphenol Corporation

spec ref		dr	He-Jie Zhang	2021/12/22	projection	MM	size	A2	scale	1:1	
tolerance std		eng	-	2021/12/22		←→	ecn no		-		
ASME_Y14.5		chr	-	-			rel level		Preliminary		
TOLERANCES UNLESS OTHERWISE SPECIFIED		appr	-	-	product family		title		DDR5 SODIMM R/A 262PIN		
surface	linear	0.X		±0.30	Amphenol FCI	cat. no.	8.0H_RVS_ASS	dwg no	10162981	rev	1
		0.XX		±0.20							
		0.XXX		±0.10							
ASME_Y14.5	angular	0°		±2°	Product - Customer Drw		sheet 4 of 4				