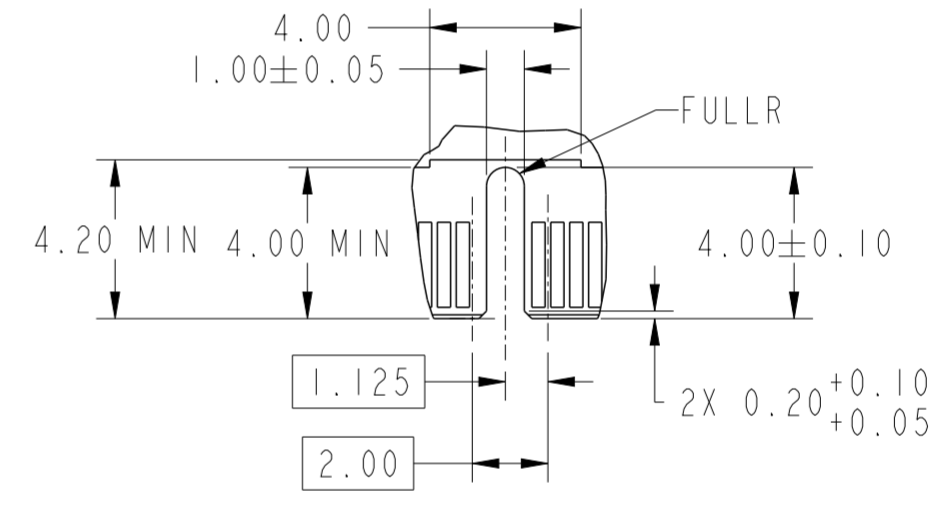
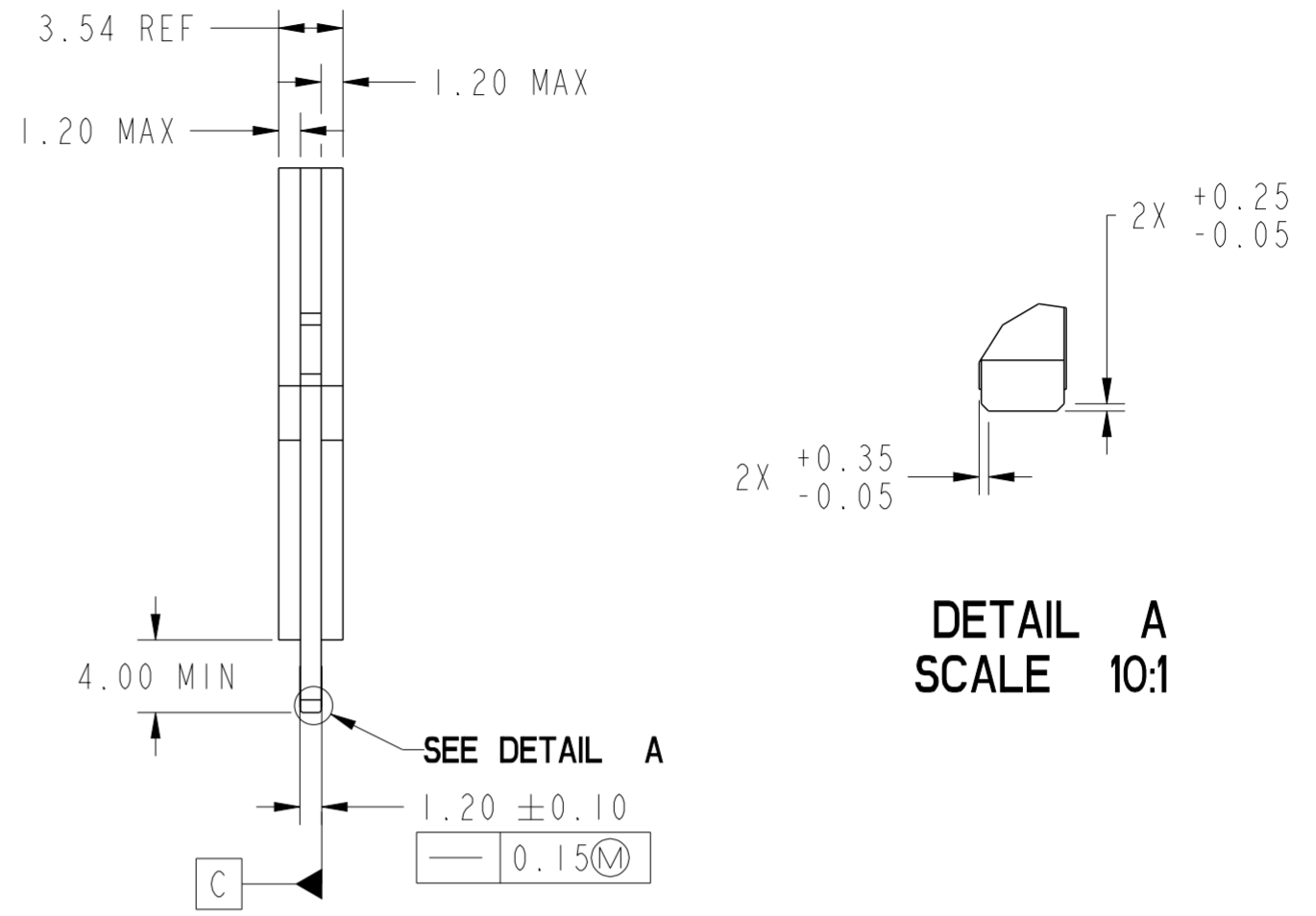
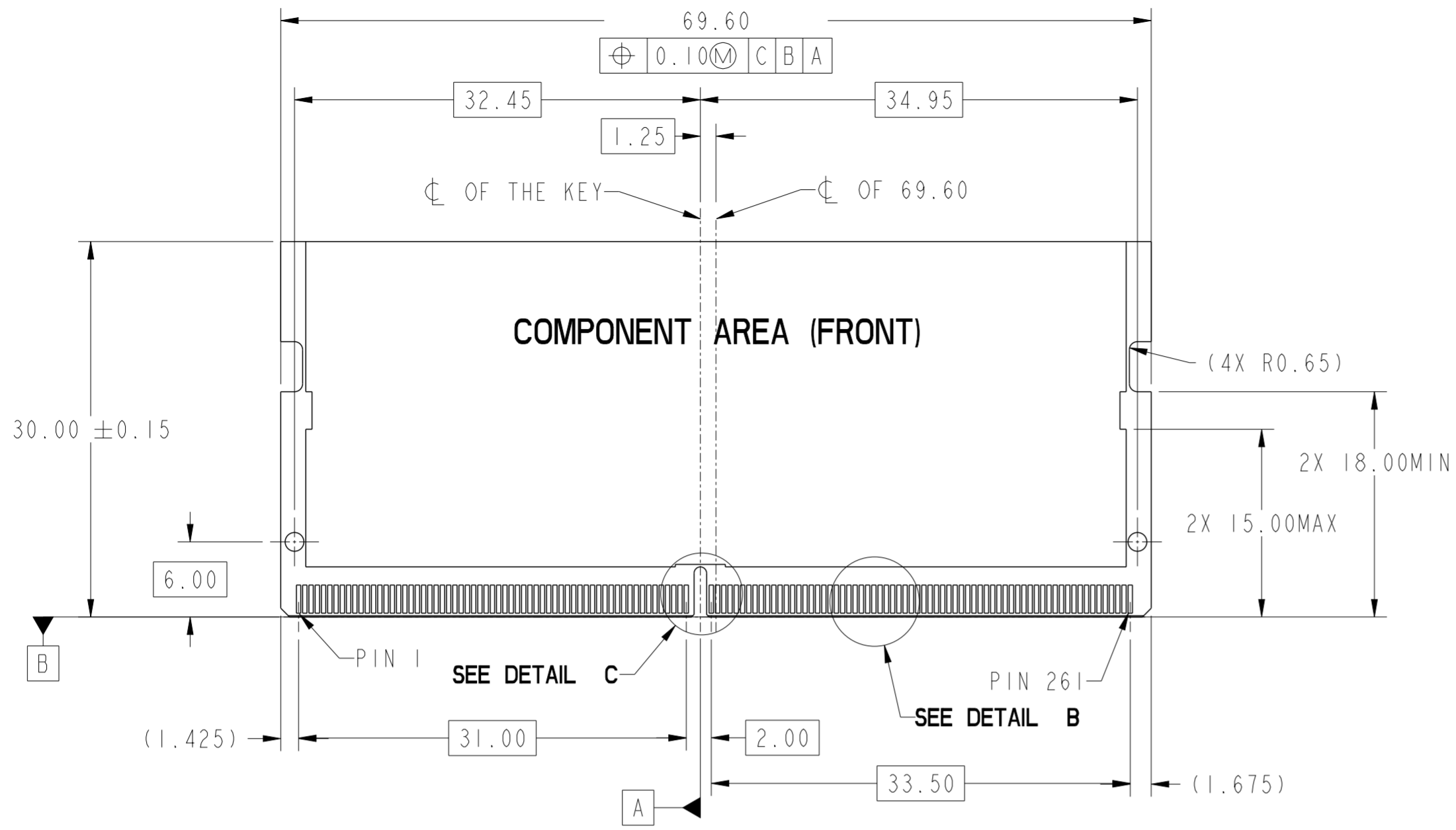


MATING/UNMATING VIEW

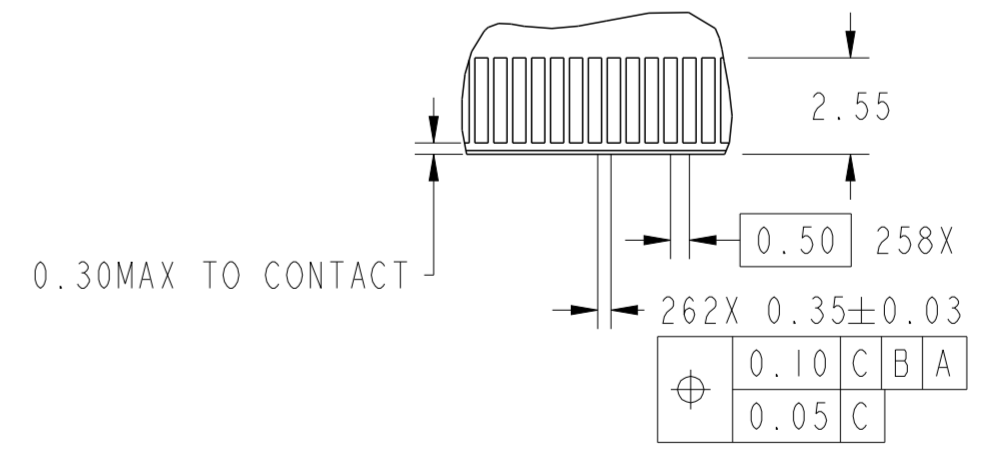
MATING: ① INSERTING (25°) → ② ROTATING → ③ FIXED
 UNMATING: ④ UNFIXED → ⑤ ROTATING → ⑥ WITHDRAWING

PRELIMINARY

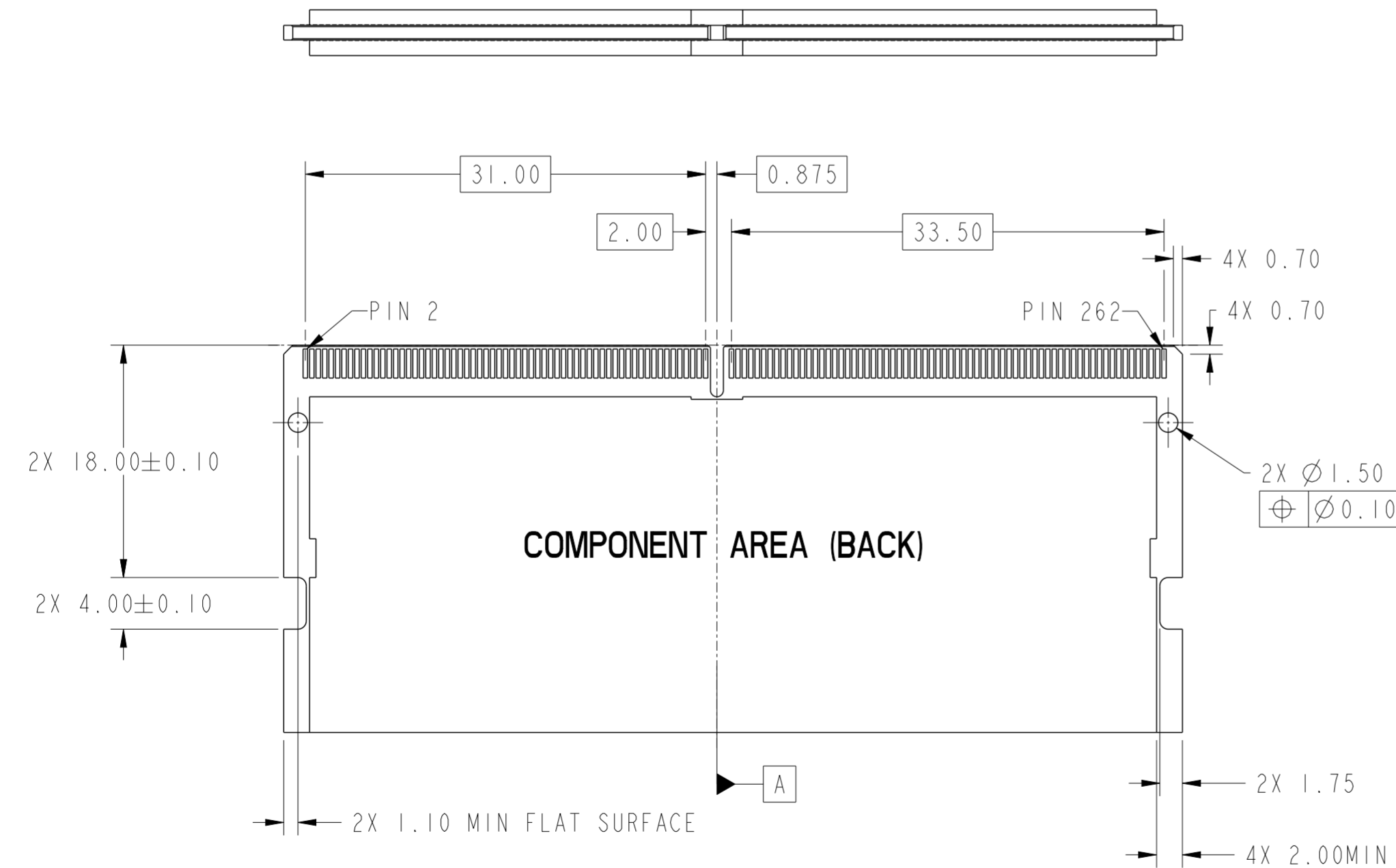
spec ref	dr	Gohan Wu	2022/09/19	projection	MM	size	A2	scale	1:1	
tolerance std	eng	-	2022/09/19			ecn no	-	rel level	Preliminary	
ISO 406	chr	-	-							
ISO 1101	appr	-	-							
TOLERANCES UNLESS OTHERWISE SPECIFIED				product family	-					
surface	linear	0.X	±0.30	Amphenol FCI	title	DDR5 SODIMM R/A 262PIN	dwg no	10161033	rev	1
		0.XX	±0.20			STD CONNECTOR 0.50mm PITCH 5.2H				
		0.XXX	±0.10		cat. no.	-	Product - Customer Drw	sheet 1 of 4		
	angular	0°	±2°							



DETAIL C
SCALE 5:1



DETAIL B
SCALE 5:1



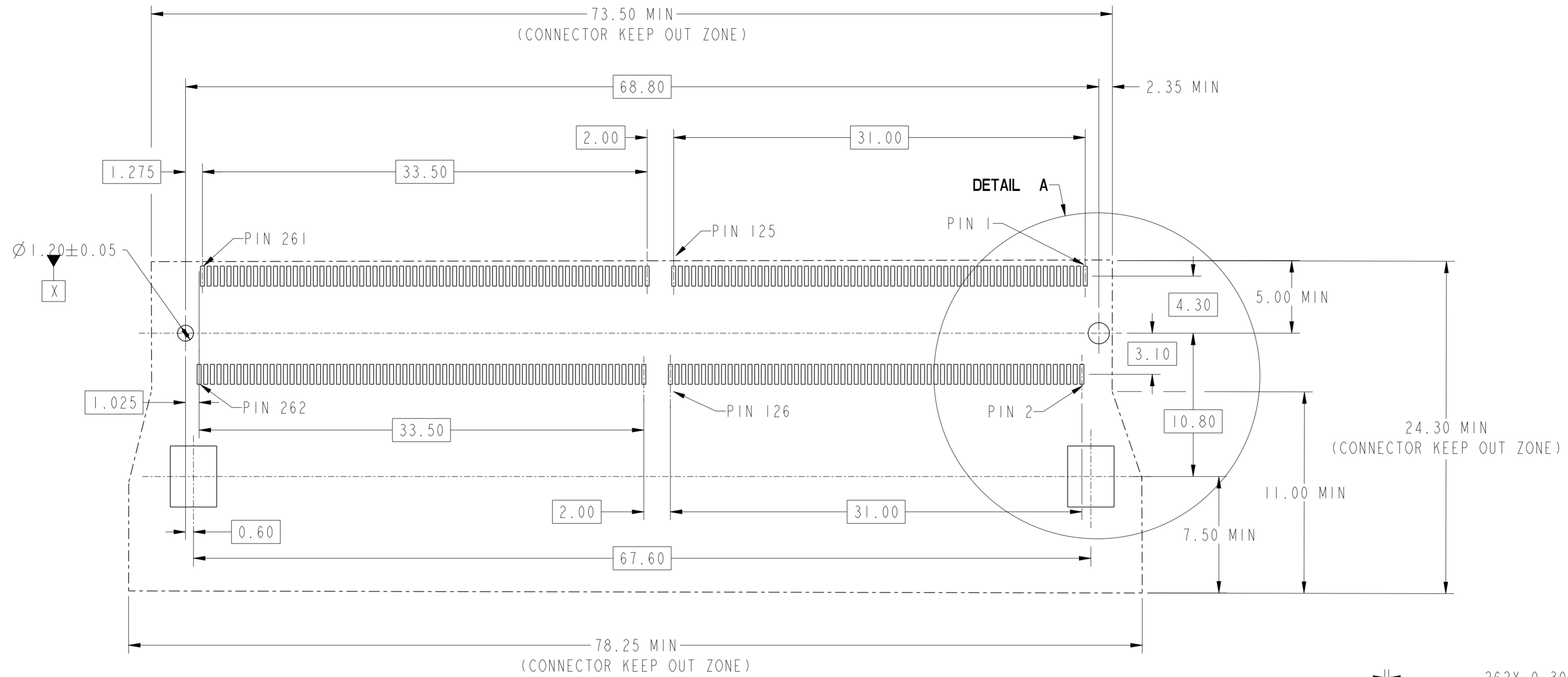
RECOMMEND CARD

spec ref	dr	Gohan Wu	2022/09/19	projection	MM	size	A2	scale	1:1	
tolerance std	eng	-	2022/09/19			ecn no	-	rel level	Preliminary	
ISO 406	chr	-	product family							-
ISO 1101	appr	-	-							-
surface	linear	0.X	±0.30	Amphenol FCI	title	DDR5 SODIMM R/A 262PIN	dwg no	10161033	rev	1
ISO 1302	angular	0°	±2°	cat. no.	-	Product - Customer Drw	sheet 2 of 4			

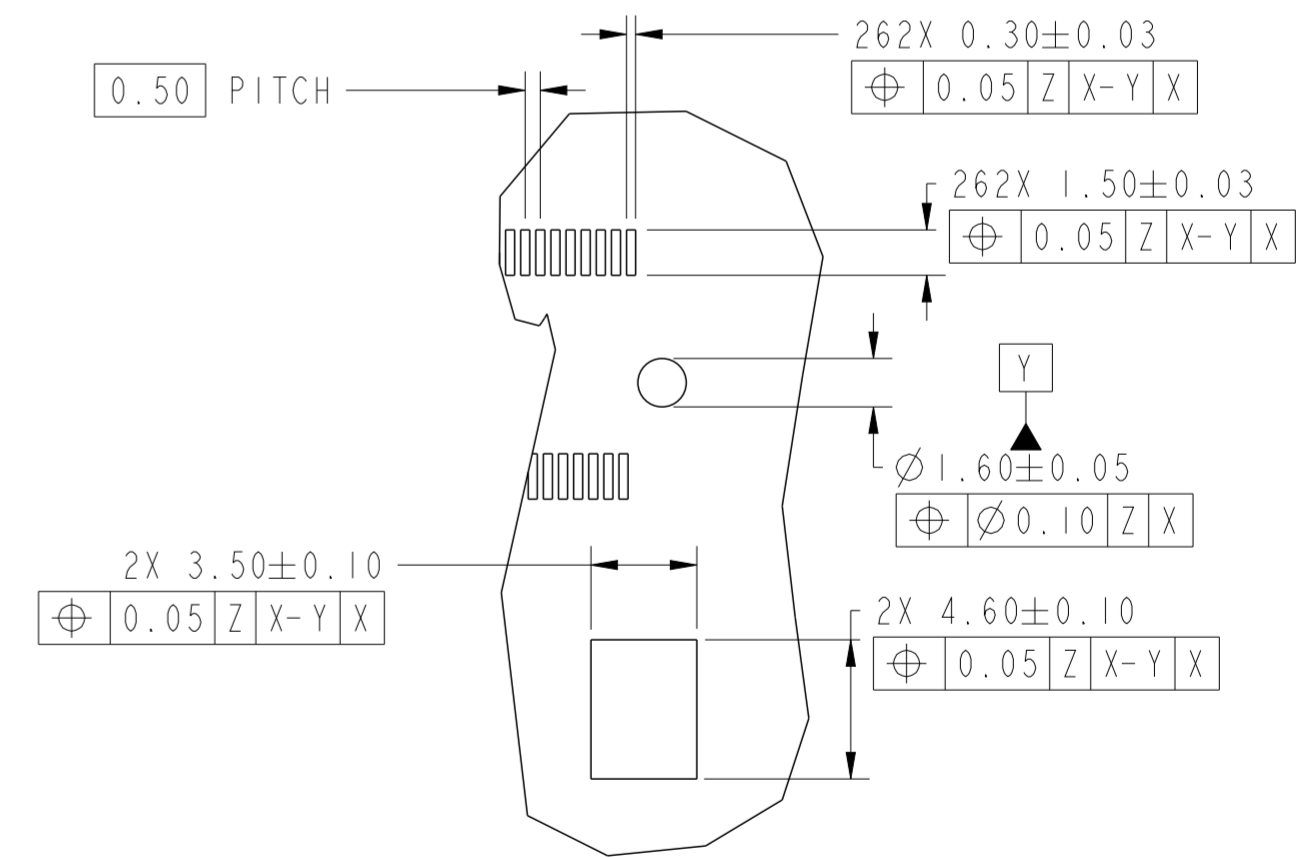
PRELIMINARY

Amphenol FCI

© 2020 Amphenol Corporation



RECOMMEND PCB LAYOUT
 THE TOLERANCE UNLESS SPECIFIED IS ±0.05MM



DETAIL A
 SCALE 4:1

PRELIMINARY

spec ref	dr	Gohan Wu	2022/09/19	projection	MM	size	A2	scale	1:1
tolerance std	eng	-	2022/09/19			ecn no	-	rel level	Preliminary
ISO 406	chr	-	-						
ISO 1101	appr	-	-						
surface	linear	0.X	±0.30	product family	-	cat. no.	-	Product - Customer Drw	sheet 3 of 4
ISO 1302		0.XX	±0.20	Amphenol FCI	title	DDR5 SODIMM R/A 262PIN	dwg no	10161033	rev
		0.XXX	±0.10			STD CONNECTOR 0.50mm PITCH 5.2H			1
	angular	0°	±2°						

NOTES:

1. MATERIAL:
 - 1.1 HOUSING: HIGH TEMPERATURE MATERIAL , COLOR: BLACK.
 - 1.2 CONTACT: COPPER ALLOY.
 - 1.3 LATCH: STAINLESS STEEL.
2. FINISH:
 - 2.1 CONTACT: GOLD FLASH PLATING ON SOLDER TAIL.
GOLD PLATING (THICKNESS SEE PART NUMBER DESCRIPTION) ON CONTACT AREA.
50 u" MIN NICKEL UNDERPLATED ALL OVER .
3. PRODUCT SPECIFICATION: GS-12-XXXX
4. PACKAGE SPECIFICATION: GS-14-XXXX
5. PRODUCT MARKING, (PART NUMBER & LOT CODE), ON THIS SURFACE
6. LEAD FREE PRODUCT MEETS THE EUROPEAN UNION DIRECTIVES & OTHER COUNTRY REGULATIONS AS DESCRIBED IN GS-47-0004
7. THE CONNECTOR WILL WITHSTAND EXPOSURE TO 260°C PEAK TEMPERATURE FOR 10 SECONDS IN CONVECTION, INFRARED , OR VAPOR PHASE REFLOW OVEN

PART NUMBER DESCRIPTION:

10161033-0 0 X R H L F



PRELIMINARY

spec ref		dr	Gohan Wu	2022/09/19	projection	MM	size	A2	scale	1:1	
tolerance std		eng	-	2022/09/19		←→	ecn no		-		
ISO 406		chr	-				rel level		Preliminary		
ISO 1101		appr	-				-		-		
TOLERANCES UNLESS OTHERWISE SPECIFIED		Amphenol FCI		title		DDR5 SODIMM R/A 262PIN		dwg no		10161033	
surface		linear		0.X ±0.30		0.XX ±0.20		0.XXX ±0.10		rev	1
ISO 1302		angular		0° ±2°		cat. no.		-		Product - Customer Drw sheet 4 of 4	