

MATING/UNMATING VIEW

MATING: ① INSERTING (25°) → ② ROTATING → ③ FIXED
 UNMATING: ④ UNFIXED → ⑤ ROTATING → ⑥ WITHDRAWING

PRELIMINARY

spec ref	dr	Ji-Lu Lu	2021/05/17	projection	MM	size	A2	scale	1:1
tolerance std	eng	Ji-Lu Lu	2024/04/15			ecn no	rel level	Released	rev
ISO 406 ISO 1101	chr	-	2024/04/15						
TOLERANCES UNLESS OTHERWISE SPECIFIED	appr	Breeze Lv	2024/04/15	product family	-	-	-	-	-
surface	linear	0.X	±0.30	Amphenol FCI	title	DDR5 SODIMM R/A 262PIN	dwg no	10157422	A
ISO 1302	angular	0.XX	±0.20			RVS CONNECTOR 0.50mm PITCH			
		0.XXX	±0.10		cat. no.	-	Product - Customer Drw	sheet 1 of 4	
		0°	±2°						

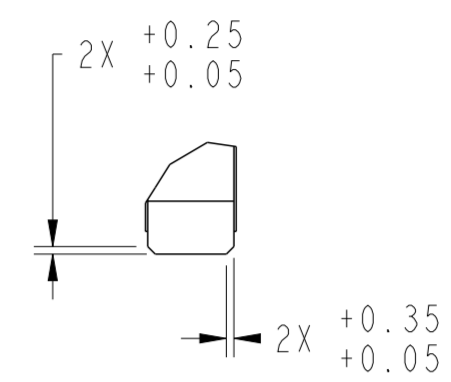
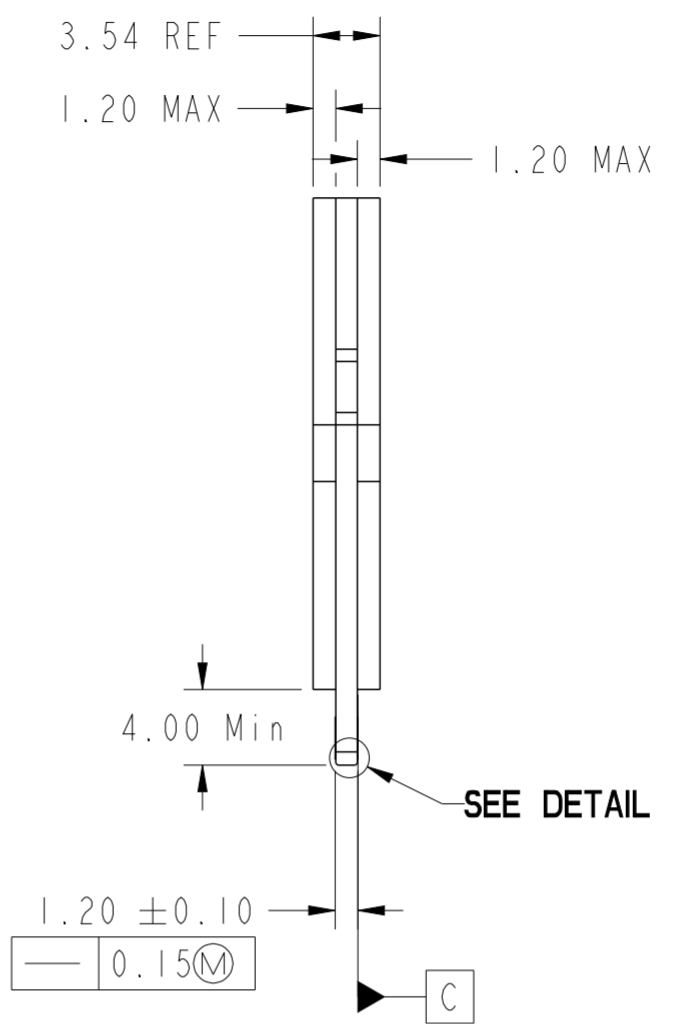
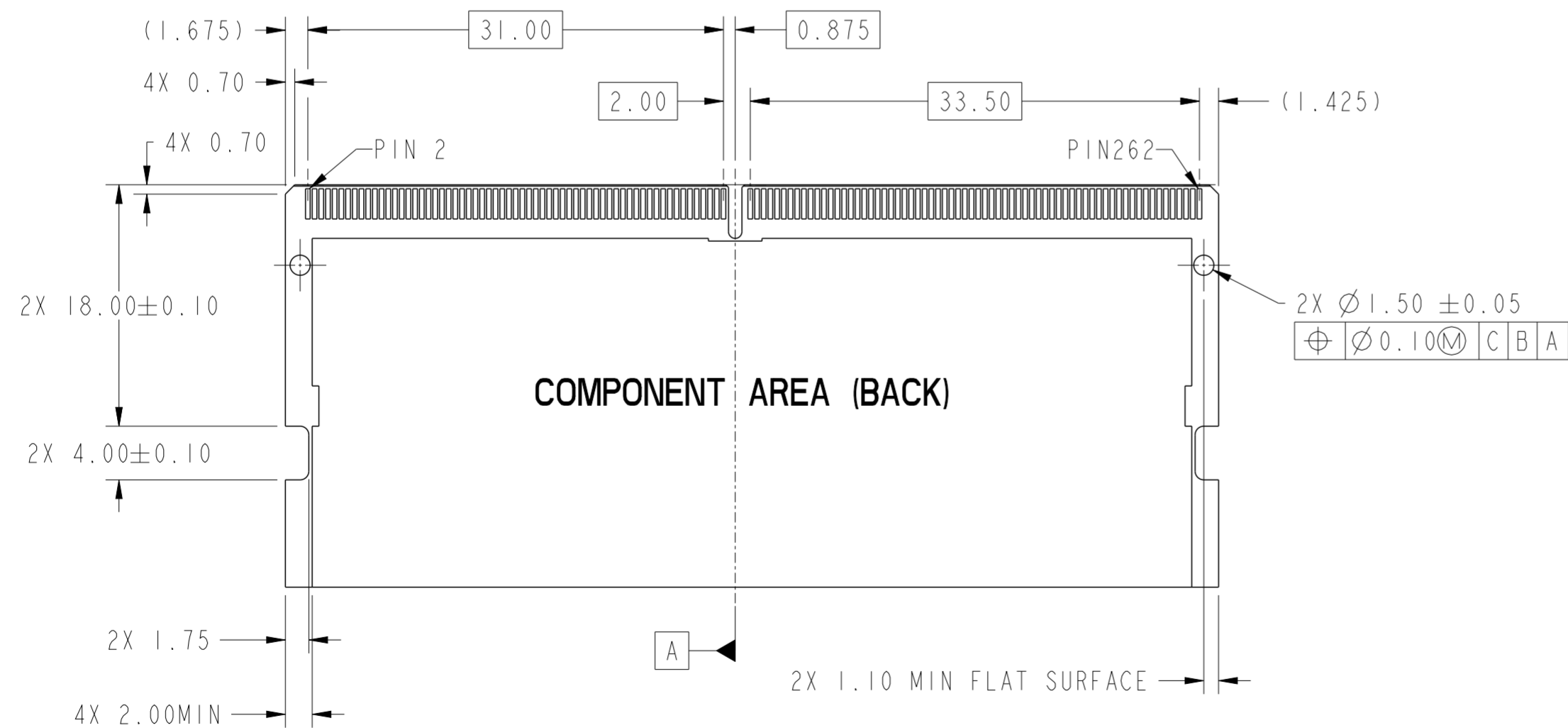
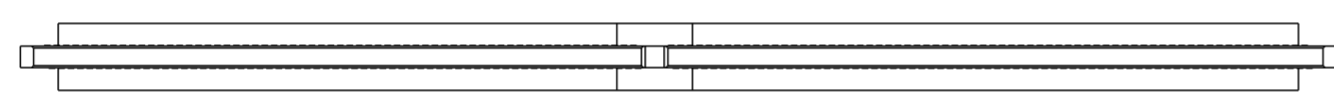
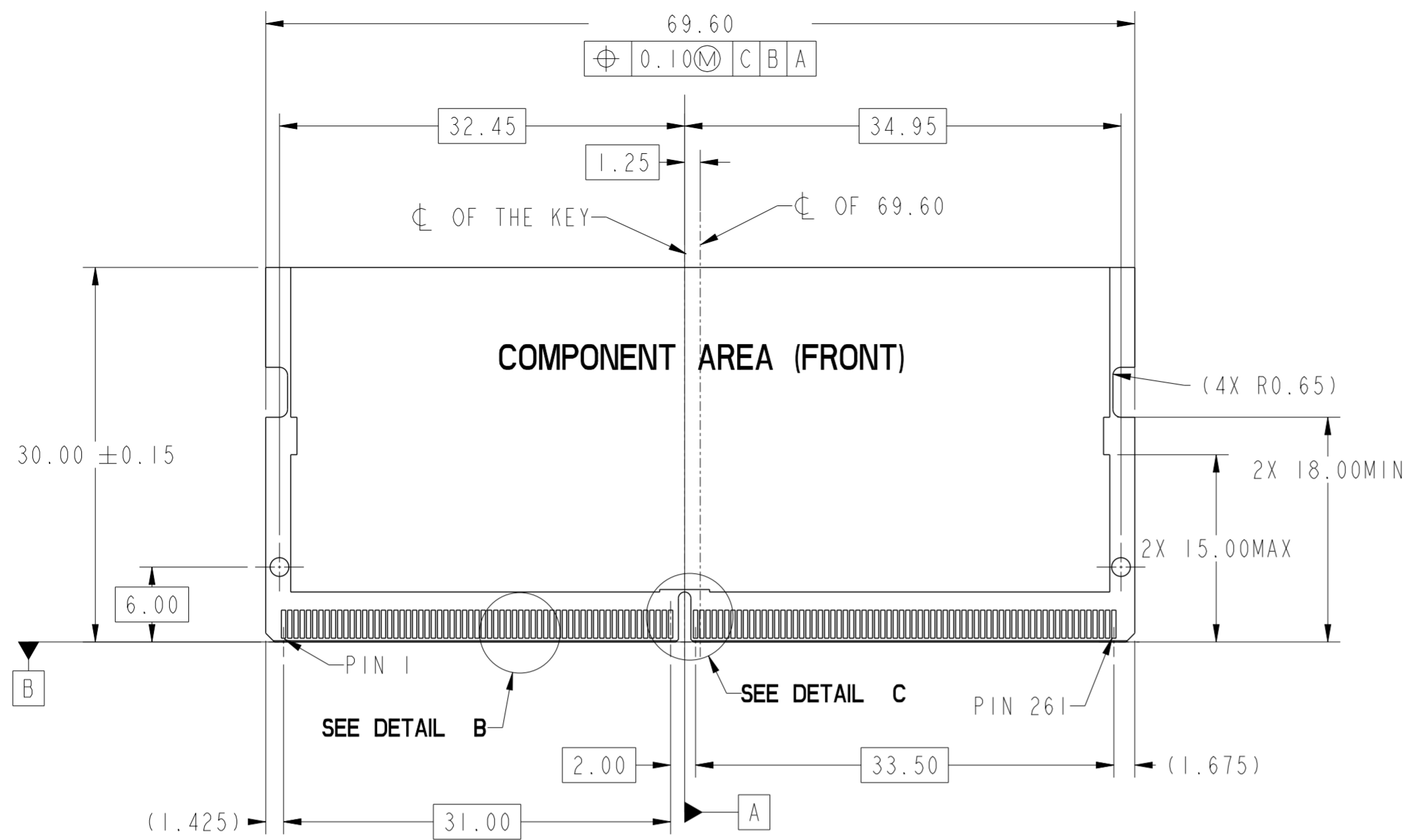
PDS: Rev :A

STATUS:Released

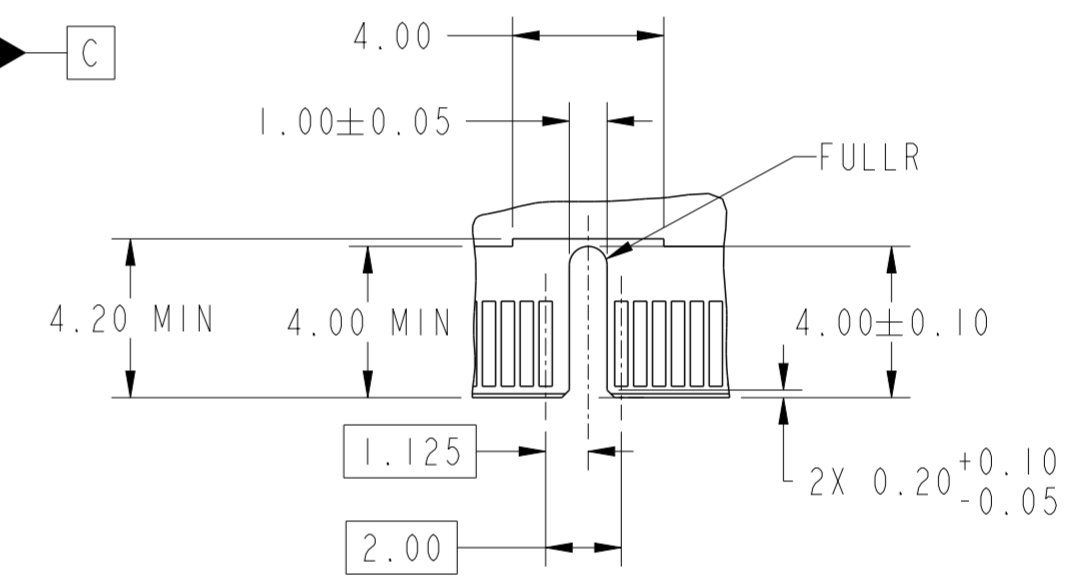
Printed: Apr 15, 2024

Amphenol FCI

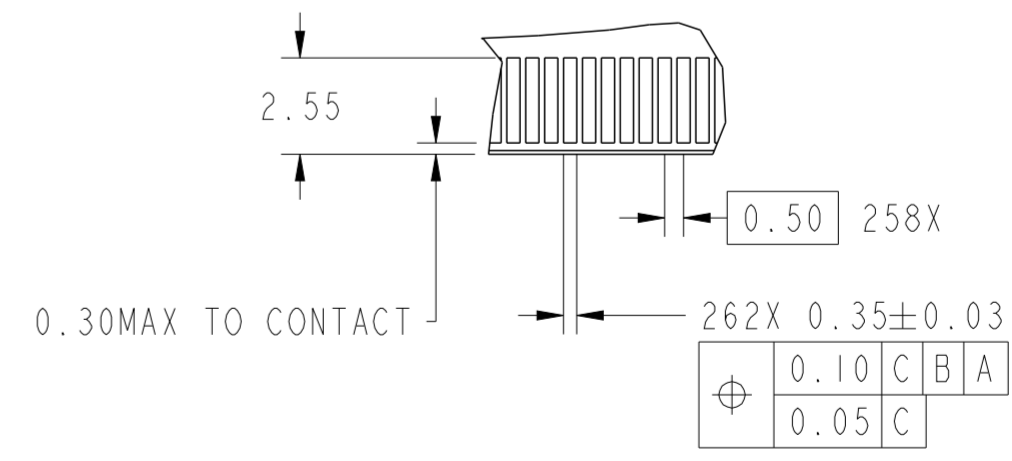
© 2020 Amphenol Corporation



DETAIL A
 SCALE 10:1



DETAIL C
 SCALE 5:1

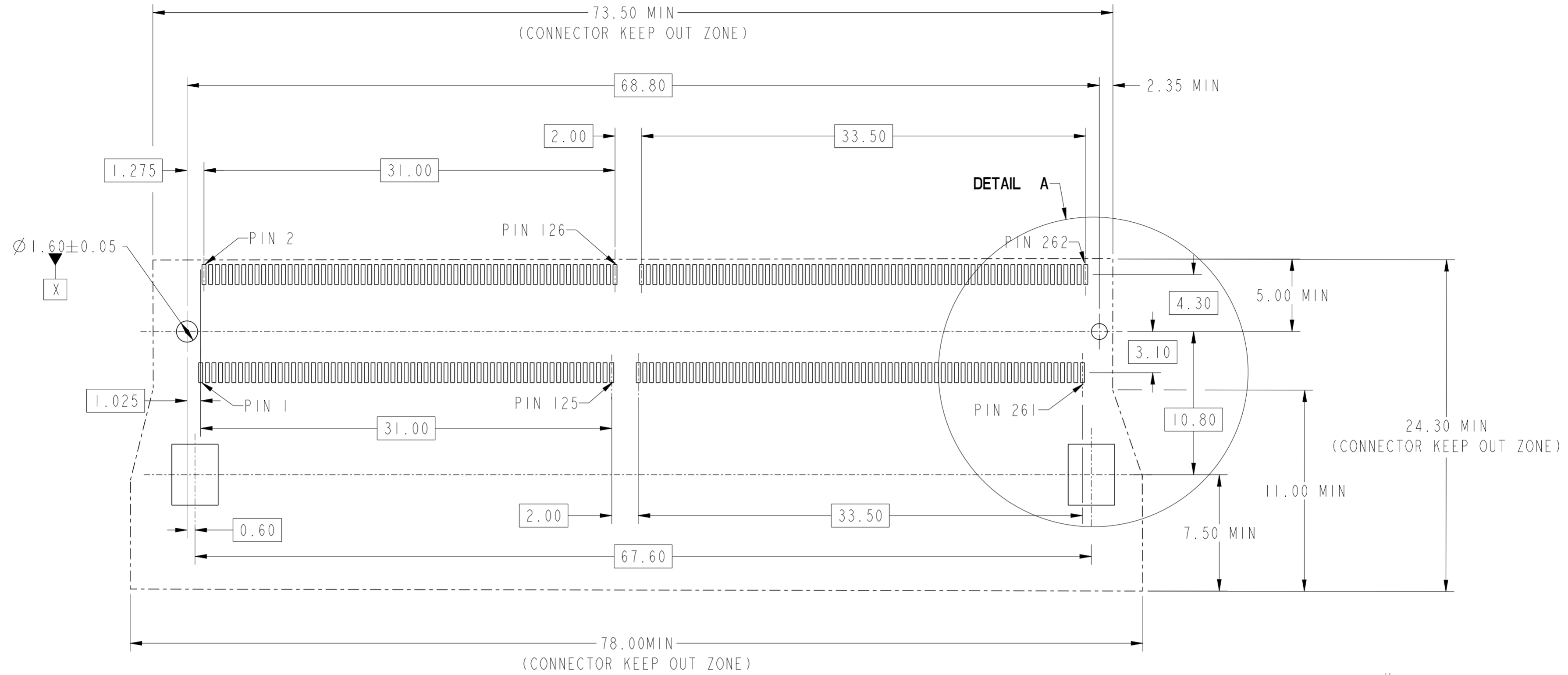


DETAIL B
 SCALE 5:1

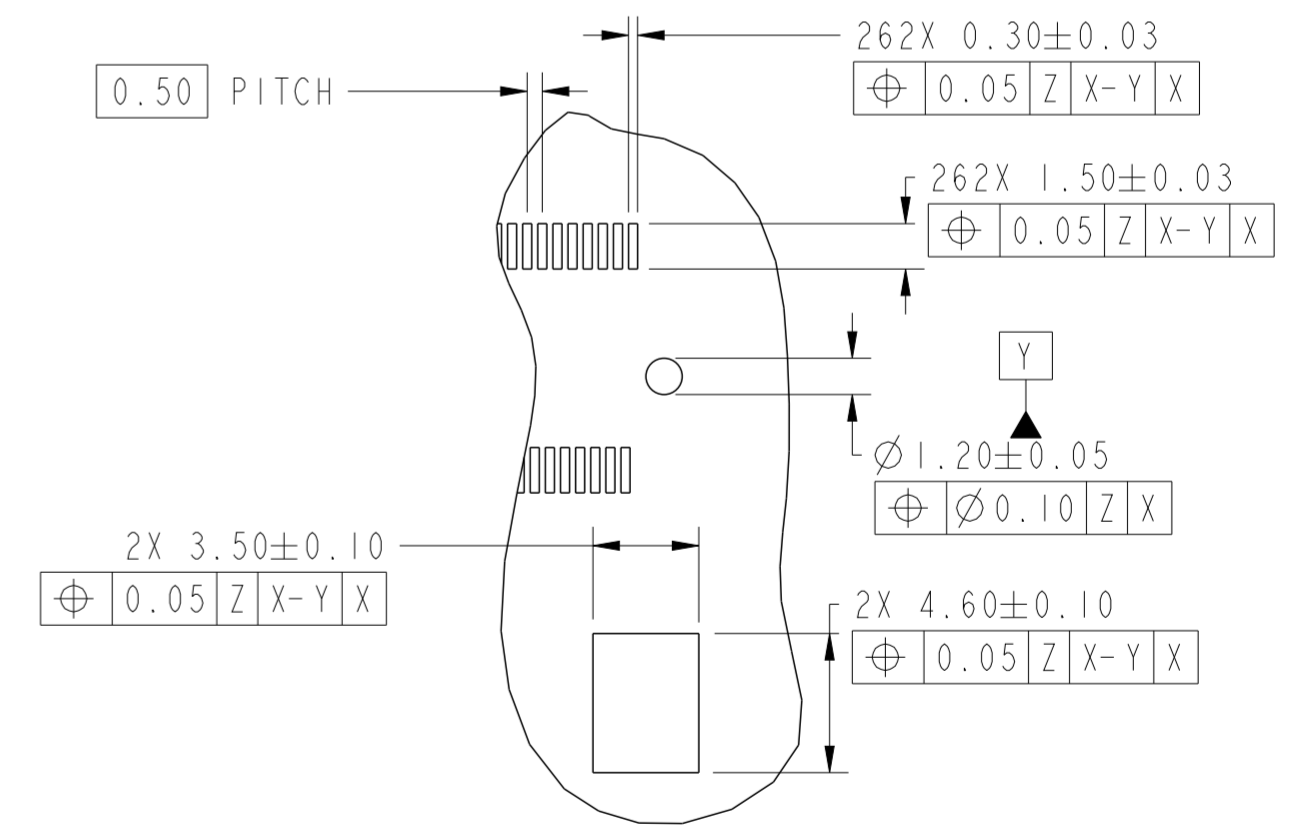
RECOMMEND CARD
 (DETAILS: SEE DDR5 SODIMM ROUTING GUIDELINE)

PRELIMINARY

spec ref	dr	Ji-Lu Lu	2021/05/17	projection	MM	size	A2	scale	1:1
tolerance std	eng	Ji-Lu Lu	2024/04/15	chr	-	ecn no	-	rel level	Released
ISO 406	appr	Breeze Lv	2024/04/15	product family	-	rel level	Released	cat. no.	-
ISO 1101								Product - Customer Drw	sheet 2 of 4
surface	linear	0.X	± 0.30	Amphenol FCI	title	DDR5 SODIMM R/A 262PIN	dwg no	10157422	rev
		0.XX	± 0.20			RVS CONNECTOR 0.50mm PITCH			A
		0.XXX	± 0.10						
ISO 1302	angular	0°	$\pm 2^\circ$						



RECOMMEND PCB LAYOUT
 (DETAILS: SEE DDR5 SODIMM ROUTING GUIDELINE)
 THE TOLERANCE UNLESS SPECIFIED IS $\pm 0.05\text{MM}$



DETAIL A
SCALE 4:1

PRELIMINARY

spec ref	dr	Ji-Lu Lu	2021/05/17	projection	MM	size	A2	scale	1:1
tolerance std	eng	Ji-Lu Lu	2024/04/15			ecn no	-	rel level	Released
ISO 406	chr	-							
ISO 1101	appr	Breeze Lv	2024/04/15						
surface	linear	Amphenol FCI		product family	-	title	DDR5 SODIMM R/A 262PIN	cat. no.	-
ISO 1302	angular	0.X	± 0.30	title	RVS CONNECTOR 0.50mm PITCH	dwg no	10157422	Product - Customer Drw	sheet 3 of 4
		0.XX	± 0.20	rev	A				
		0.XXX	± 0.10						
		0°	$\pm 2^\circ$						

NOTES:

1. MATERIAL:
 - 1.1 HOUSING: LCP , COLOR: BLACK.
 - 1.2 CONTACT: COPPER ALLOY.
 - 1.3 LATCH: STAINLESS STEEL.
2. FINISH:
 - 2.1 CONTACT: GOLD FLASH PLATING ON SOLDER TAIL.
GOLD PLATING (THICKNESS SEE PART NUMBER DESCRIPTION) ON CONTACT AREA.
50 u"MIN NICKEL UNDERPLATED ALL OVER .
3. PRODUCT SPECIFICATION: GS-12-1667
4. PACKAGE SPECIFICATION: GS-14-2951
5. PRODUCT MARKING, (PART NUMBER & LOT CODE), ON THIS SURFACE
6. LEAD FREE PRODCUT MEETS THE EUROPEAN UNION DRECTIVES & OTHER COUNTRY REGULATIONS AS DESCRIBED IN GS-47-0004
7. THE CONNECTOR WILL WITHSTAND EXPOSURE TO 260°C PEAK TEMPERATURE FOR 10 SECONDS IN CONVECTION, INFAR-RED , OR VAPOR PHASE REFLOW OVEN

PART NUMBER DESCRIPTION:

10157422-0 0 X R H L F

HALOGEN FREE & LEAD FREE
 R: TAPE & REEL PACKING GENERAL
 S: TAPE & REEL PACKING REVERSE
 PLATING CODE:
 1: GF
 2: Au 10u" MIN
 4: Au 15u" MIN
 5: Au 30u" MIN

PRELIMINARY

spec ref		dr	Ji-Lu Lu	2021/05/17	projection	MM	size	A2	scale	1:1
tolerance std		eng	Ji-Lu Lu	2024/04/15		←→	ecn no		rel level	
ISO 406 ISO 1101		chr	-	-			Released			
TOLERANCES UNLESS OTHERWISE SPECIFIED		appr	Breeze Lv	2024/04/15	product family					
surface	linear	0.X	±0.30	Amphenol FCi	title	DDR5 SODIMM R/A 262PIN RVS CONNECTOR 0.50mm PITCH	dwg no	10157422	rev	A
		0.XX	±0.20							
		0.XXX	±0.10							
ISO 1302	angular	0°	±2°	cat. no.	-	Product - Customer Drw		sheet 4 of 4		