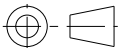

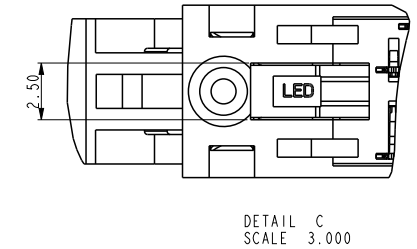
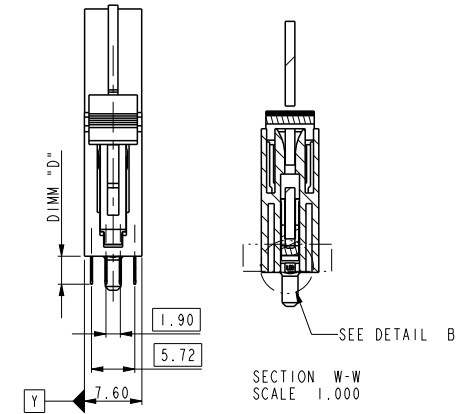
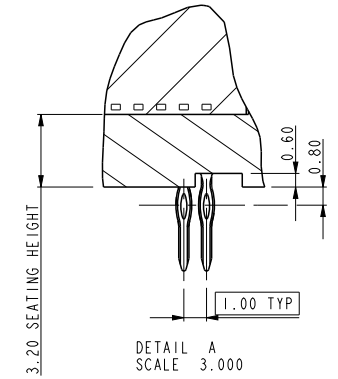
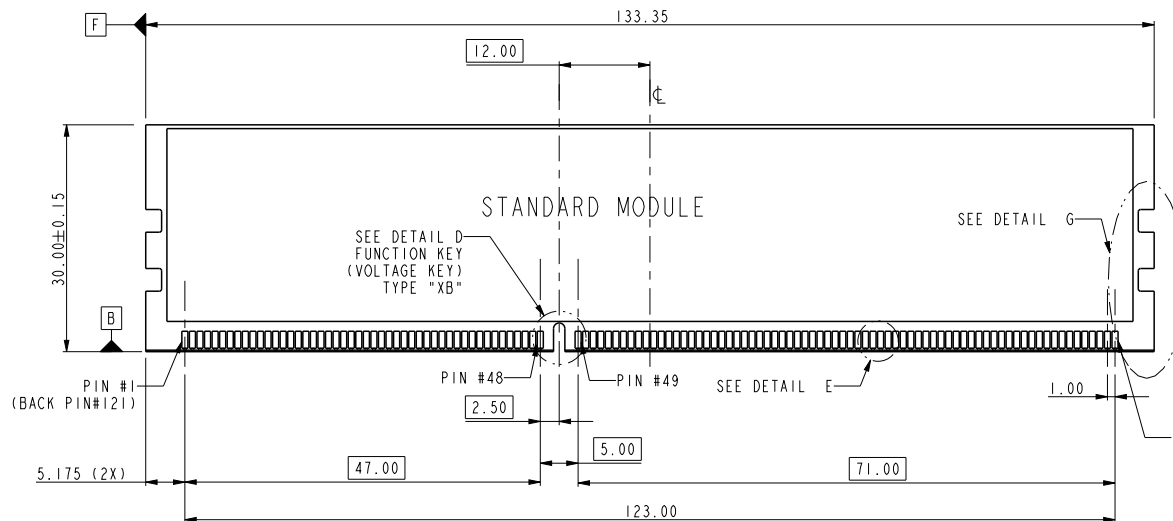


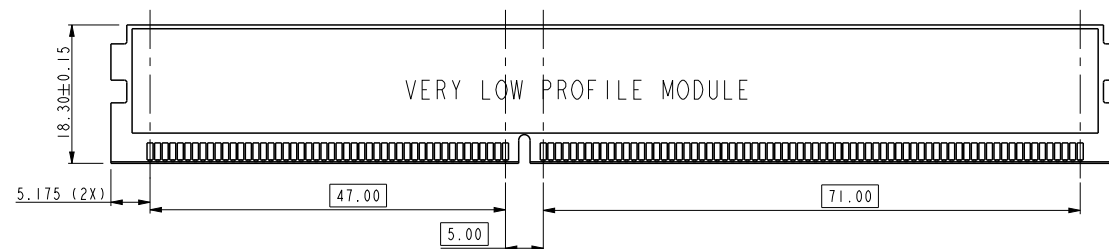
tolerance unless otherwise specified	
linear	.X ± .38
	.XX ± .25
	.XXX ± .13
angles	0° ± 2°

dr	Rick Bian	2010/07/04	projection 	mm 	size	A4	scale	0.500
eng	Girder Liang	2018/09/11			ecn no	ELX-DG-31223-1		
chr	-	-			rel level	Released		
appr	Nickor Zuo	2018/09/14	product family			rev		
Amphenol FCI		title			dwg no		rev	
		DDR III, 240P PRESS-FIT V/T HOUSING			10087607		D	
www.fci.com		cat. no.			Product - Customer Drw		sheet 1 of 4	

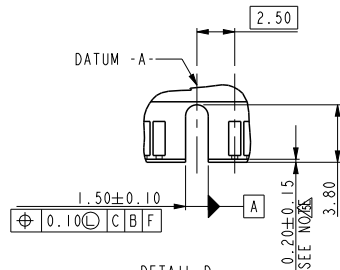




SEE MO-269 FOR DETAIL



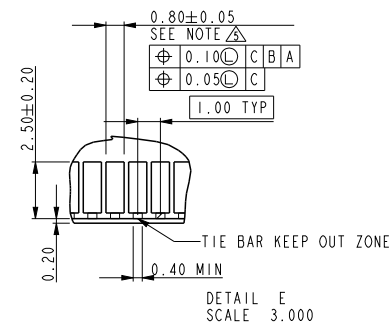
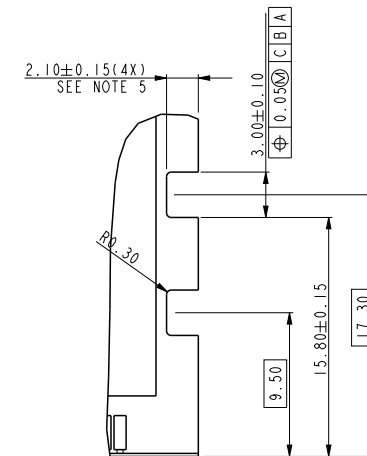
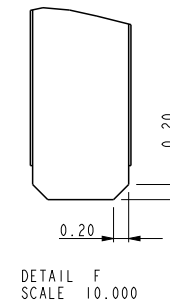
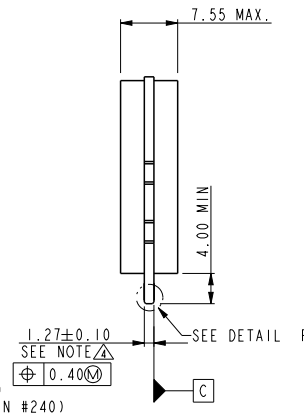
SEE MO-269 FOR DETAIL



DETAIL D
FUNCTION KEY
KEY POSITION CENTER
TYPE "XB"
SCALE 2.000

NOTE:
1. MATERIAL : FR-4.
2. FINISH: SOLDER MASK.
3. BURR: 0.08 MAX.

TYPE "XB"	1.5 VOLTAGE
SUB KEY POS #1	DESCRIPTION



tolerance unless otherwise specified	
linear	.X ± .38
	.XX ± .25
	.XXX ± .13
angles	0° ± 2°

dr	Rick Bian	2010/07/04	projection	mm	size	A4	scale	0.500
eng	Girder Liang	2018/09/11			ecn no	ELX-DG-31223-1		
chr	-	-			rel level	Released		
appr	Nickor Zuo	2018/09/14	product family		rev	D		
Amphenol FCI		title			dwg no		10087607	
www.fci.com		cat. no.			Product - Customer Drw		sheet 2 of 4	
		DDR III, 240P PRESS-FIT						
		V/T HOUSING						

A

B

C

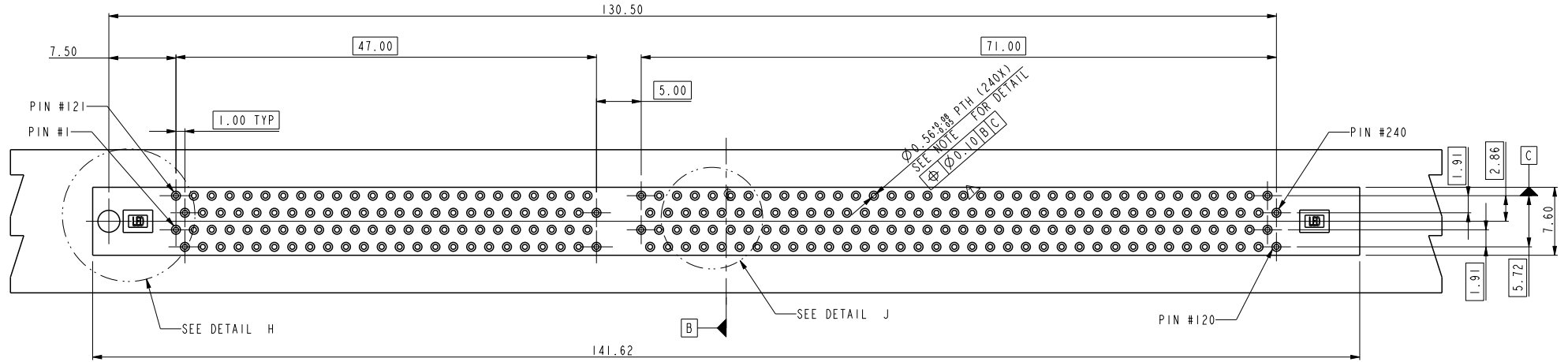
D

A

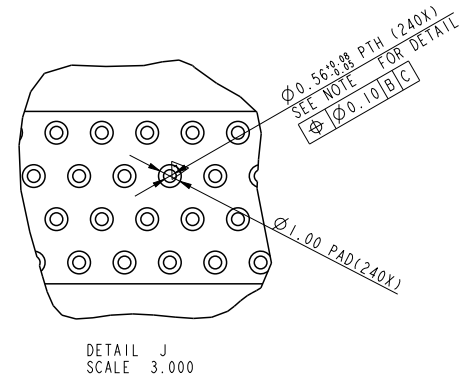
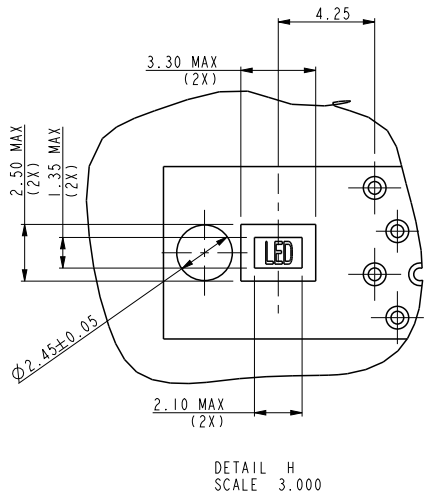
B

C

D



RECOMMENDED CIRCUIT BOARD HOLE LAYOUT



dr	Rick Bian	2010/07/04	projection	mm	size	A4	scale	0.500
eng	Girder Liang	2018/09/11			ecn no	ELX-DG-31223-1		
chr	-	-			rel level	Released		
appr	Nickor Zuo	2018/09/14	product family		rev	D		
<div> <div>tolerance unless otherwise specified</div> <div>linear</div> <div>angles</div> </div> <div> <div>.X ± .38</div> <div>.XX ± .25</div> <div>.XXX ± .13</div> <div>0° ± 2°</div> </div>		<div> <div>Amphenol FCI</div> <div>www.fci.com</div> </div>	<div> <div>title</div> <div>DDR III, 240P PRESS-FIT V/T HOUSING</div> </div>	<div> <div>cat. no.</div> <div>*</div> </div>	<div> <div>Product - Customer Drw</div> </div>	<div> <div>sheet 3 of 4</div> </div>	<div> <div>dwg no</div> <div>10087607</div> </div>	<div> <div>rev</div> <div>D</div> </div>

NOTE:

1. MATERIAL:
HOUSING: HIGH PERFORMANCE RESINS, GLASS FILLED UL94V-0 RATED,
COLOR: BLACK.
EJECTOR: HIGH PERFORMANCE RESINS, GLASS FILLED UL94V-0 RATED,
COLOR: NATURAL.
TERMINAL: COPPER ALLOY.
 2. FCI LOGO TO BE APPROXIMATELY LOCATED AS SHOWN ON PRINT.
 3. PRODUCT SPECIFICATION: GS-12-XXX(SPECIFICATION NOT YET AVAILABLE)
 4. CARD THICKNESS APPLIES ACROSS TABS AND INCLUDES PLATING AND / OR METALIZATION.
 5. LEADING EDGE OF CONTACT PADS SPECIFIED BY THE KEEP OUT ZONE SHALL BE FREE OF BURRS AND EXTERNAL TIE BARS.
FOR OPTIMUM PERFORMANCE, THE TIE BAR IS TO BE ON AN INTERNAL LAYER SO THAT THE REMNANT CANNOT CAUSE CONTACT DAMAGE.
 6. PACKAGING SPECIFICATION: GS-14-528.
 7. ALL PTH SHOULD BE 0.66mm DIA DRILLED AND 0.025mm MIN.
ELECTRO-DEPOSITED COPPER THK ON THROUGH HOLE WALL.
 8. THIS PRODUCT MEETS EUROPEAN UNION DIRECTIVES AND OTHER COUNTRY REGULATIONS AS DESCRIBED IN GS-22-008.
 9. THE HOUSING WILL WITHSTAND EXPOSURE TO 260°C PEAK TEMPERATURE FOR 10 SECONDS IN A WAVE SOLDER APPLICATION.
 10. THE AMBER EJECTOR CAN WITHSTAND MAX 174°C EXPOSURE TEMPERATURE
- DATE CODE: X X X X X X

10087607- <input type="checkbox"/> <input type="checkbox"/> <input type="checkbox"/> <input type="checkbox"/> <input type="checkbox"/>	
STYLE: MECHANICAL KEYING	
1 : 1.5 VOLT. W/CENTER KEY #1	
REVISE	
0	
TAIL LENGTH	
CODE	DIM. "D"
0	3.30
1	3.70
2	4.20
3	2.10

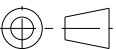

PLATING

CODE	CONTACT	TAIL AREA	UNDERPLATE	CODE	CONTACT	TAIL AREA	UNDERPLATE
2B	15u"(0.38um) MIN. GOLD	35u"~100u" Tin/Lead PLATING	50u"(1.27um) MIN. NICKEL OVERALL	2LF	15u"(0.38um) MIN. GOLD	35u"~100u" Tin PLATING	50u"(1.27um) MIN. NICKEL OVERALL
3B	30u"(0.76um) MIN. GOLD			3LF	30u"(0.76um) MIN. GOLD		
4B	3u"(0.076um) MIN. GOLD			4LF	3u"(0.076um) MIN. GOLD		
6B	15u"(0.38um) MIN. GOLD (LUBRICATED)	35u"~100u" Tin/Lead PLATING	50u"(1.27um) MIN. NICKEL OVERALL	6LF	15u"(0.38um) MIN. GOLD (LUBRICATED)	35u"~100u" Tin PLATING	50u"(1.27um) MIN. NICKEL OVERALL
7B	30u"(0.76um) MIN. GOLD (LUBRICATED)			7LF	30u"(0.76um) MIN. GOLD (LUBRICATED)		
8B	3u"(0.076um) MIN. GOLD (LUBRICATED)			8LF	3u"(0.076um) MIN. GOLD (LUBRICATED)		

COLOR OF HOUSING AN EJECTOR

- 0 : BLACK HOUSING + IVORY EJECTOR
1 : BLACK HOUSING + AMBER COLOR EJECTOR
2 : BLACK HOUSING + BLACK EJECTOR
3 : IVORY HOUSING + IVORY EJECTOR
4 : BLUE HOUSING + IVORY EJECTOR



dr	Rick Bian	2010/07/04	<div>projection</div> 	<div>mm</div> 	size	A4	scale	0.500
eng	Girder Liang	2018/09/11			ecn no	ELX-DG-31223-1		
chr	-	-			rel level	Released		
appr	Nickor Zuo	2018/09/14	product family					
<div>Amphenol FCI</div>		title			dwg no			rev
		DDR III, 240P PRESS-FIT V/T HOUSING			10087607			D
www.fci.com		cat. no.		*	Product - Customer Drw			sheet 4 of 4