

# EAGLEI CELLULAR RTU - Data logger



2403943

<https://www.phoenixcontact.com/us/products/2403943>

Please be informed that the data shown in this PDF document is generated from our online catalog. Please find the complete data in the user documentation. Our general terms of use for downloads are valid.



A pre-assembled enclosure system that utilizes cellular communication and the Internet for remote data access. Data, trends, alarms, and status information from remote sensors can be monitored via the Internet.

## Product description

EAGLEi<sup>®</sup> is a simple, flexible, and secure remote monitoring solution using a combination of hardware and services that leverages cellular infrastructure. Data, trends, alarms, and status information of remotely located sensors and instrumentation can be accessed from an HTML5 device with an internet connection. EAGLEi allows a customer to quickly collect data without prior knowledge of how to set up VPN networks or web clients. No special software or programming required.

## Your advantages

- Data resides on a secure, private network
- Data is available wherever the Internet is available using a computer, tablet, or smart phone
- Data retrieval requires user/password authentication
- Great for new or existing installations
- No software require to purchase or maintain data

## Commercial data

Item number	2403943
Packing unit	1 pc
Note	Made to order (non-returnable)
Sales key	DT02
Product key	DTHCEA
GTIN	4055626338057
Weight per piece (including packing)	1.05 g
Weight per piece (excluding packing)	1 g
Country of origin	US

## Technical data

### Product properties

Product type	Switchgear and controlgear assembly
Installation location	Outdoor installation, covered area

### Electrical properties

Supply voltage range	100 V AC ... 240 V AC
Nominal voltage $U_N$	120 V AC

### Input data

#### Analog:

Number of inputs	4
A/D converter resolution	12 bit
Current input signal	4 mA ... 20 mA

#### Digital:

Number of inputs	8
Input voltage	24 V DC () 120 V AC ()
Nominal input voltage $U_{IN}$	24 V DC 120 V AC

### Dimensions

#### External dimensions

Width / Height / Depth	403 mm / 438 mm / 240 mm
------------------------	--------------------------

#### Installation dimensions

Width / Height / Installation depth	291.3 mm / 454.8 mm /
-------------------------------------	-----------------------

### Material specifications

Material	Polycarbonate
----------	---------------

### Environmental and real-life conditions

#### Ambient conditions

Degree of protection	IP66
Ambient temperature (operation)	-25 °C ... 45 °C
Ambient temperature (storage/transport)	-35 °C ... 45 °C
Permissible humidity (operation)	0 % ... 90 % (non-condensing)

### Standards and regulations

Standards/specifications	UL 508A
--------------------------	---------

### Mounting

# EAGLEI CELLULAR RTU - Data logger



2403943

<https://www.phoenixcontact.com/us/products/2403943>

Mounting type	Wall mounting
---------------	---------------

# EAGLEI CELLULAR RTU - Data logger



2403943

<https://www.phoenixcontact.com/us/products/2403943>

## Classifications

### ECLASS

ECLASS-13.0	27370190
ECLASS-11.0	27142422

# EAGLEI CELLULAR RTU - Data logger



2403943

<https://www.phoenixcontact.com/us/products/2403943>

## Environmental product compliance

### EU RoHS

Fulfills EU RoHS substance requirements	Not applicable, Not qualified for the European market
---	---

# EAGLEI CELLULAR RTU - Data logger



2403943

<https://www.phoenixcontact.com/us/products/2403943>

## Accessories

### ILC 191 ETH 2TX - Controller

2700976

<https://www.phoenixcontact.com/us/products/2700976>



The Inline controller offers the option of communicating via PROFINET and Modbus/TCP. Programming is carried out using PC Worx Express or PC Worx (IEC 61131-3).

---

### UNO-PS/1AC/24DC/150W - Power supply unit

2904376

<https://www.phoenixcontact.com/us/products/2904376>



Primary-switched UNO power supply for DIN rail mounting, input: 1-phase, output: 24 V DC/150 W

# EAGLEI CELLULAR RTU - Data logger

2403943

<https://www.phoenixcontact.com/us/products/2403943>



## PLC-RSC- 24DC/ 1AU/SEN - Relay Module

2966317

<https://www.phoenixcontact.com/us/products/2966317>



PLC-INTERFACE for input functions, consisting of PLC-BSC.../SEN basic terminal block with screw connection and plug-in miniature relay with multi-layer gold contact, for mounting on DIN rail NS 35/7,5, 1 N/O contact, input voltage 24 V DC

---

## PLC-RSC-120UC/ 1AU/SEN - Relay Module

2966320

<https://www.phoenixcontact.com/us/products/2966320>



PLC-INTERFACE for input functions, consisting of PLC-BSC.../SEN basic terminal block with screw connection and plug-in miniature relay with multi-layer gold contact, for mounting on DIN rail NS 35/7,5, 1 N/O contact, input voltage 120 V AC/110 V DC

# EAGLEI CELLULAR RTU - Data logger

2403943

<https://www.phoenixcontact.com/us/products/2403943>



## PLC-RSC- 24DC/ 1/ACT - Relay Module

2966210

<https://www.phoenixcontact.com/us/products/2966210>



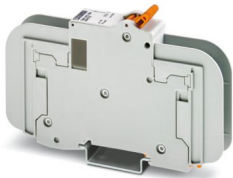
PLC-INTERFACE for output functions, consisting of PLC-BSC.../ACT basic terminal block with screw connection and plug-in miniature relay with power contact, for mounting on DIN rail NS 35/7,5, 1 N/O contact, input voltage 24 V DC

---

## TMC 81D 05A - Thermomagnetic device circuit breaker

2907630

<https://www.phoenixcontact.com/us/products/2907630>



Thermomagnetic device circuit breaker, number of positions: 1, cross section: 1 mm<sup>2</sup>- 35 mm<sup>2</sup>, AWG: 18 - 2, mounting type: DIN rail: 35 mm

---

Phoenix Contact 2024 © - all rights reserved  
<https://www.phoenixcontact.com>

Phoenix Contact USA  
586 Fulling Mill Road  
Middletown, PA 17057, United States  
(+717) 944-1300  
[info@phoenixcon.com](mailto:info@phoenixcon.com)