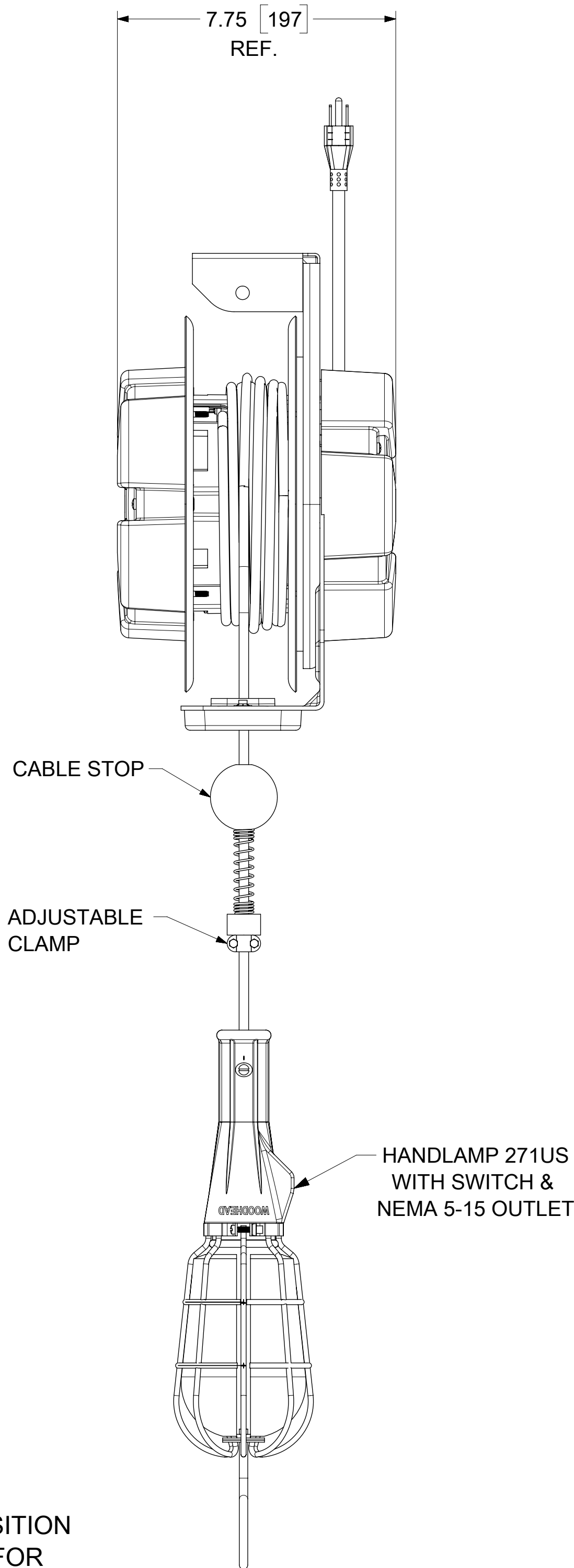
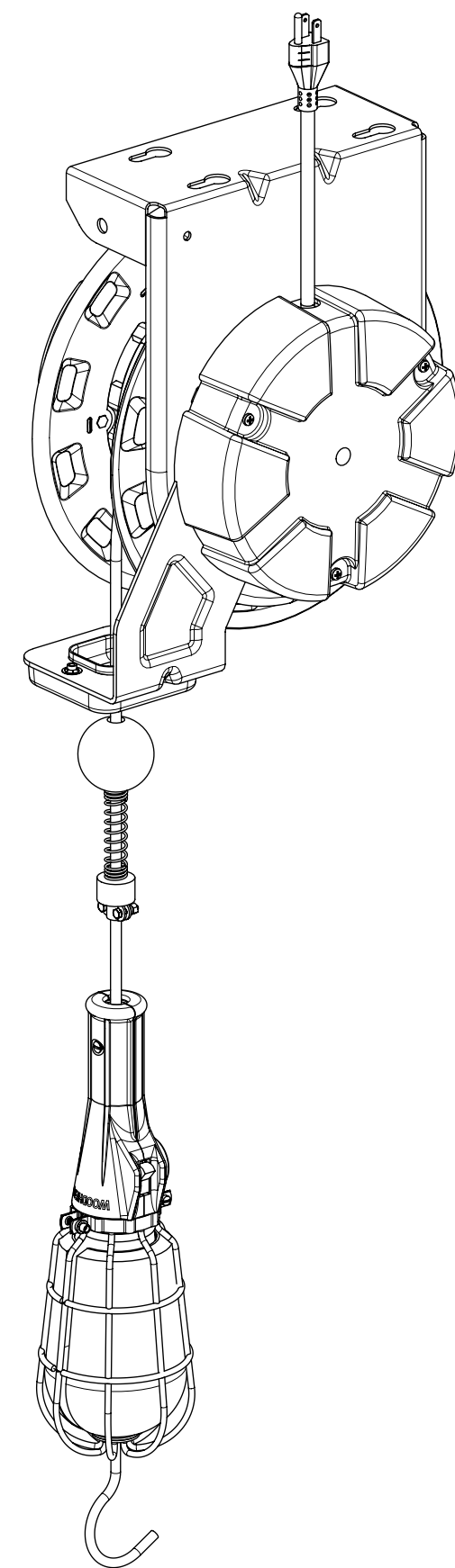
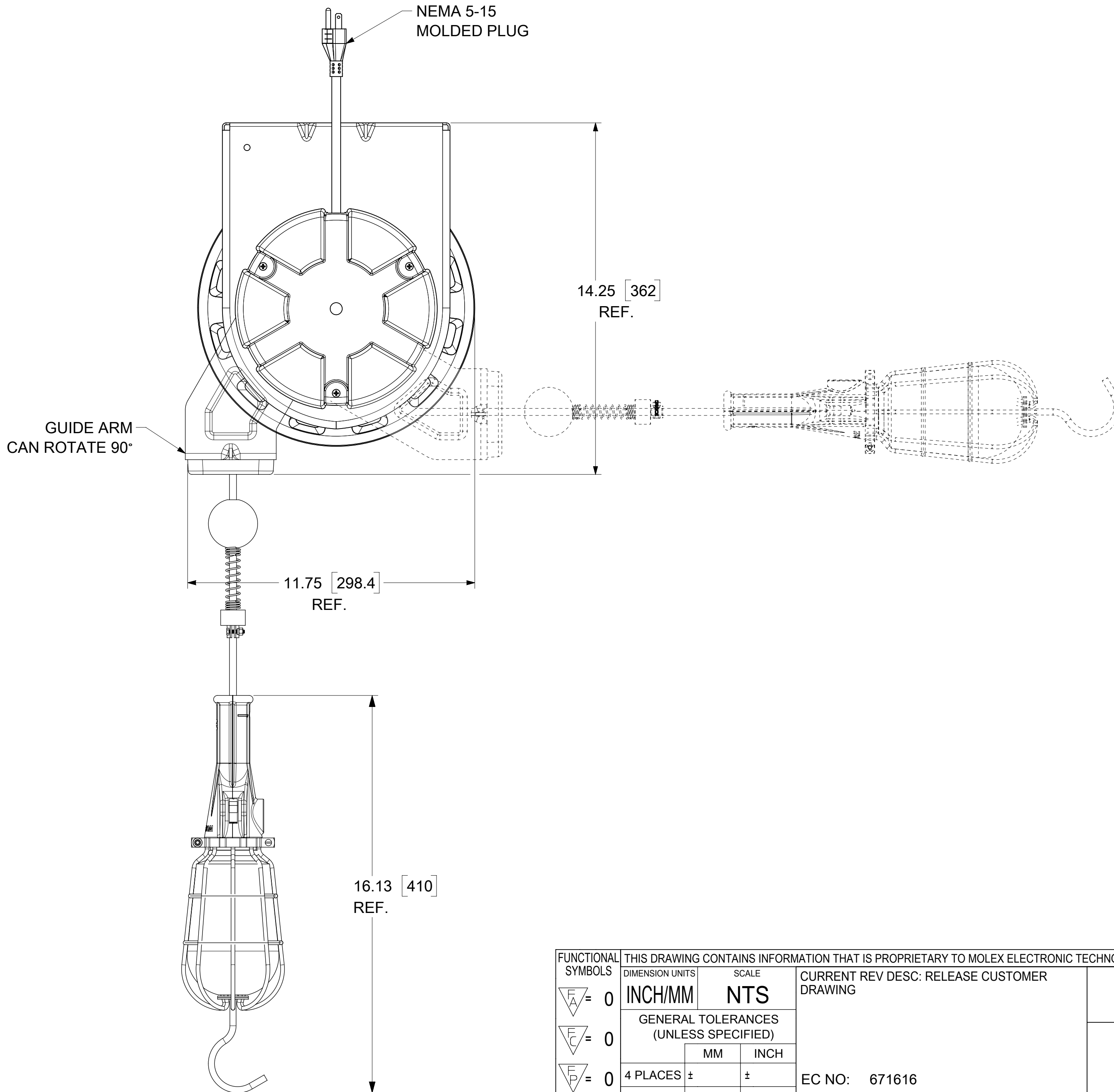
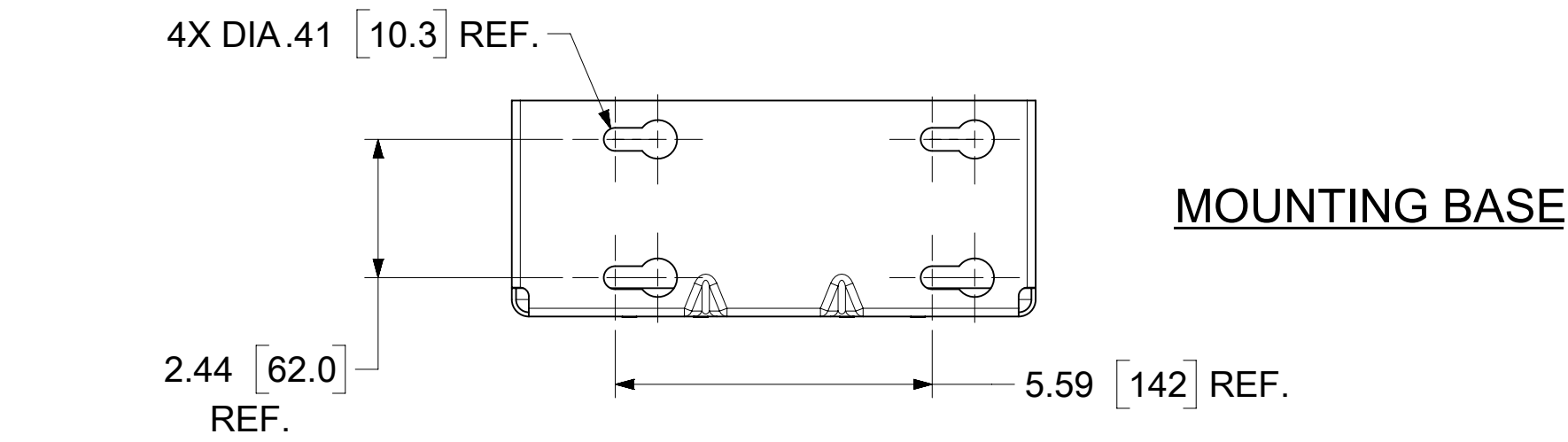


ORDER NO	130091-0021
WOODHEAD ENG. NO	980-271US
WIRE GAUGE	16
CONDUCTORS	3
AMPERAGE	8A
WORKING CORD	50 FT. YELLOW
CORD TYPE	SJTOW
CONSTRUCTION	STEEL
PAINT	YELLOW POWDER COAT
REEL ENCLOSURE RATING	INDOOR
RETRACTION WEIGHT	2.0 LB [0.907 KG]



NOTES:

1. CABLE GUIDE IS ADJUSTABLE - DUAL POSITION
2. RATCHET LOCK IS EASY TO DISENGAGE FOR CONSTANT TENSION
3. REEL CANNOT BE "LOCKED OUT" AT FULL TENSION
4. CABLE STOP INCULDED



FUNCTIONAL SYMBOLS <div><div>F</div><div>A</div></div> = 0 <div><div>F</div><div>E</div></div> = 0 <div><div>F</div><div>E</div></div> = 0 DIVISIONAL SYMBOLS	THIS DRAWING CONTAINS INFORMATION THAT IS PROPRIETARY TO MOLEX ELECTRONIC TECHNOLOGIES, LLC AND SHOULD NOT BE USED WITHOUT WRITTEN PERMISSION									
	DIMENSION UNITS		SCALE		CURRENT REV DESC: RELEASE CUSTOMER DRAWING			<div>molex</div>		
	INCH/MM		NTS							
	GENERAL TOLERANCES (UNLESS SPECIFIED)				EC NO: 671616 DRWN: VHANDI 2020/12/15 CHK'D: DSOPPIN 2022/08/10 APPR: HKNEELAND 2022/08/10 INITIAL REVISION: DRWN: VHANDI 2020/12/15 APPR: HKNEELAND 2022/08/10			CORD REEL W/271US LAMP 50" #16-3 SJTOW NEMA 5-15 PLUG		
	MM		INCH							
	4 PLACES ±		±					PRODUCT CUSTOMER DRAWING		
	3 PLACES ±		± 0.005							
	2 PLACES ± 0.13		± 0.01							
	1 PLACE ± 0.25		± 0.02		DOCUMENT NUMBER <div>1300910021</div>			DOC TYPE PSD	DOC PART 000	REVISION A
	0 PLACES ±		±							
ANGULAR TOL ± 0.5 °					DOC TYPE		DOC PART	REVISION		
DRAFT WHERE APPLICABLE MUST REMAIN WITHIN DIMENSIONS		THIRD ANGLE PROJECTION	DRAWING	SERIES	MATERIAL NUMBER		CUSTOMER		SHEET NUMBER	
		<div><div></div><div></div></div>	D-SIZE	130091	SEE TABLE		GENERAL MARKET		1 OF 1	

DOCUMENT STATUS	P1	RELEASE DATE	2022/08/10	17:26:34
-----------------	----	--------------	------------	----------