

## 1/16 DIN TIMER ACCESSORIES—8 PIN ACCESSORIES

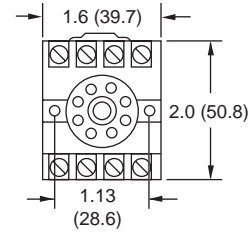
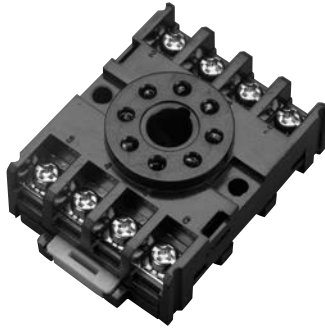
000-825-85-00

8-Pin surface DIN rail socket.

Recommended for use with all 8-pin octal plug-in devices when surface mounting or DIN rail mounting.

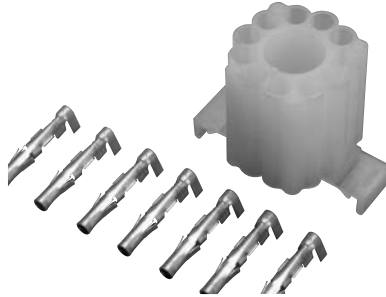
UL #E72711

US & CAN.



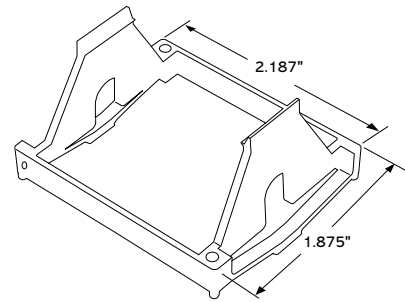
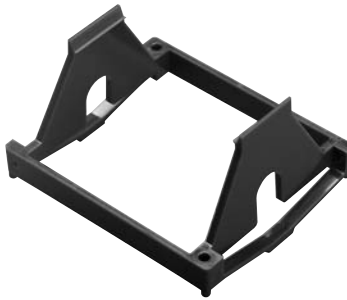
319-261-45-00

Plug-on socket kit (8 pin). Recommended for use with all 8-pin octal plug-in devices. Panel mounting only. Attach the wires to the solderless connector with a crimping tool.



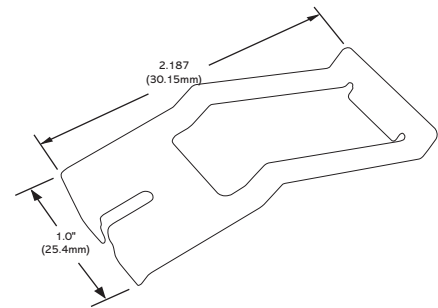
405-320-02-00

Panel Mounting bracket. Recommended for use with all 1/16 DIN timers when panel mounting. Use in conjunction with the 8-pin or 11-pin panel socket with rear facing terminals.



407-025-13-00

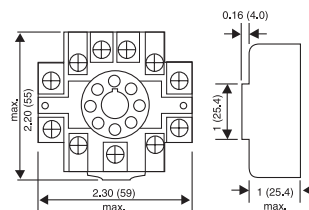
Hold-down for 405C/409B Series and part #000-825-85-00. Two (2) needed for proper installation.



## 1/16 DIN TIMER ACCESSORIES—8 PIN ACCESSORIES

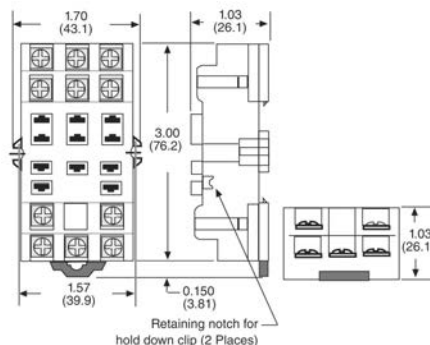
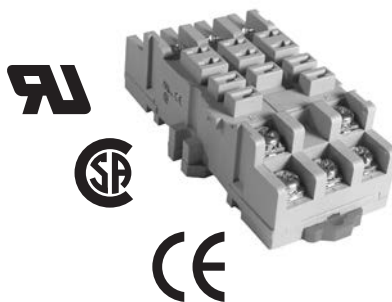
000-825-86-00

11-Pin surface DIN rail socket.  
Recommended for use with all 11-pin  
octal plug-in devices when surface  
mounting or DIN rail mounting.



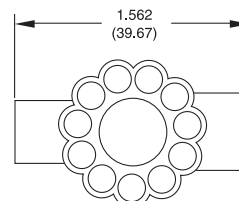
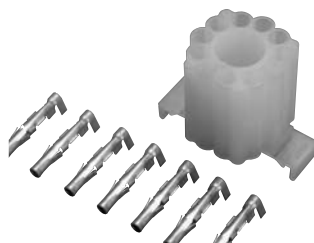
70-463-1

11-Pin Socket, DIN/Panel  
Mount, with screw terminals &  
Clamping plates.



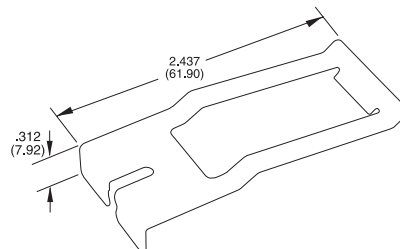
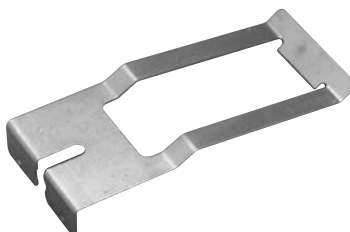
314-260-07-00

Plug-on socket kit (11-pin).  
Recommended for use with all 11-pin  
octal plug-in devices. Panel mounting  
only. Attach the wires to the solderless  
connector with a crimping tool.



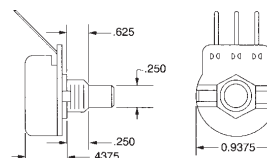
405-025-07-00

Hold down for 407C Series and part  
#000-825-86-00.  
Two (2) needed for proper installation.



101026105

Recommended for use with all the ATC Diversified  
Electronics family of "remote adjustable" timers.  
Proper spacing is maintained for UL and CSA  
applications. This linear taper potentiometer has  
a non-conductive shaft attached to the internal  
conductive plastic wafer. The brass bushing is  
3/8" x 32NEF and accepts adjustment hardware  
1000540070, 100054071.



100054073

Recommended for use with any adjustment or  
switch having a 1/4" shaft. This knob slips over  
the shaft and is secured in place by a #6-32 set  
screw. The knurled, mirror finished, black thermo-  
stat knob has a white pointer line for reference.

