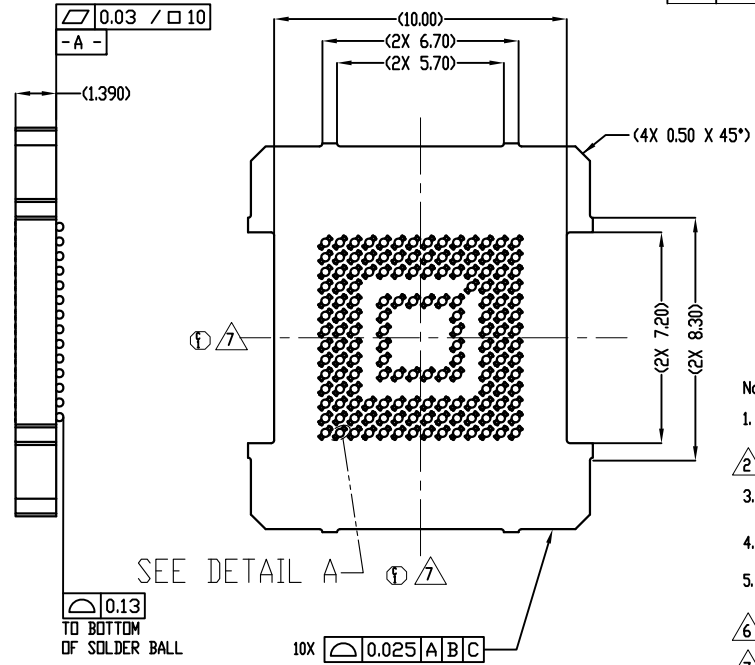
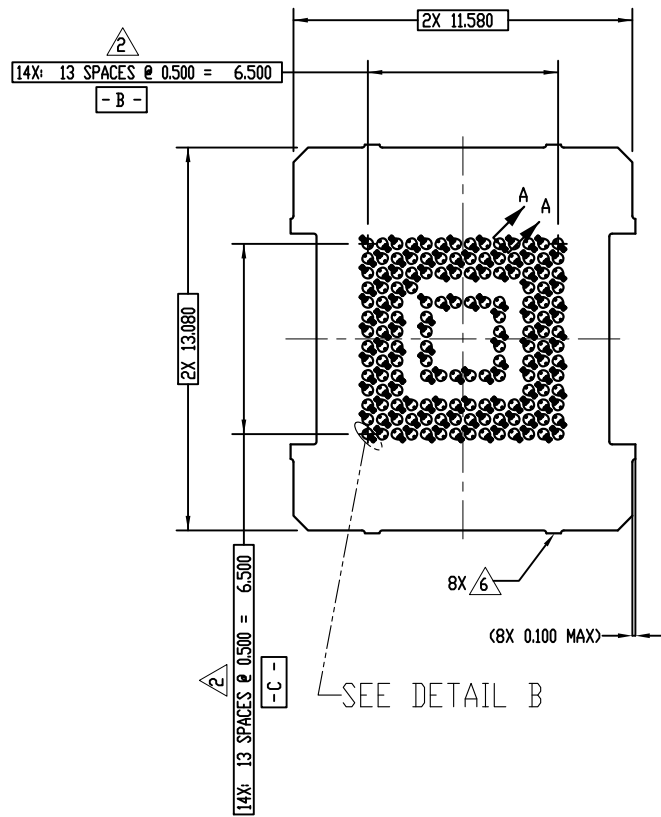
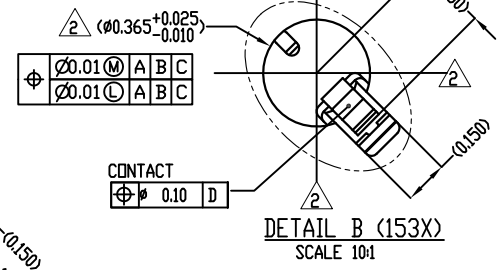
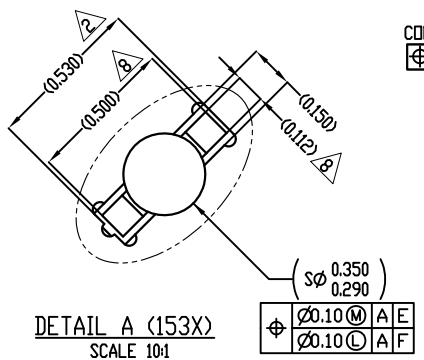
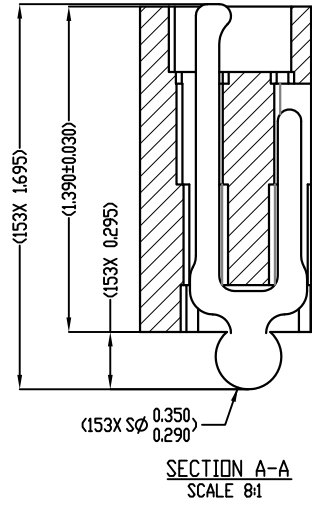


REV	ECO	BY	DESCRIPTION	APV	DATE
A	30879	JN	Initial Design	KW	08/30/11
B	31043	SK	Updated border	KW	03/07/12
C	31118	WB	Note 7. Center of ball pattern was Center of contact pattern. 1) Changed back view notes: 7 was 1 2) Added title to Parts List	KW	06/25/12



- Notes:
- Reference HSIO Technologies Solutions specification 700001-0001 for solder attachment.
 - Dimension locates center of contact/ slot.
 - Reference HSIO Technologies Solutions specification 700001-0002 for application notes.
 - Footprint part number is 104311-0291.
 - Datums -B- and -C- are determined by $\phi 0.365$ features on corner slots.
 - Tooling marks permitted. Maximum 0.10 protrusion (shown).
 - E- Center of ball pattern.
 - F- Center of contact.

Parts List	
Part Number	Description
107249-0026	CS, 153G4011.5X13-0.50
103864-0128	PRESS, DEVICE INSERT, GRYP 11.5 X 13 (SOLD SEPARATELY)
105900-0004	EXTRACTION TOOL, 4 X 53 (SOLD SEPARATELY)
104553-0220	STEN FLEX, 153G4011.5X13-0.50 (SOLD SEPARATELY)
108639-0003	ALIGNMENT FRAME, G40, 11.5 X 13.0 (SOLD SEPARATELY)

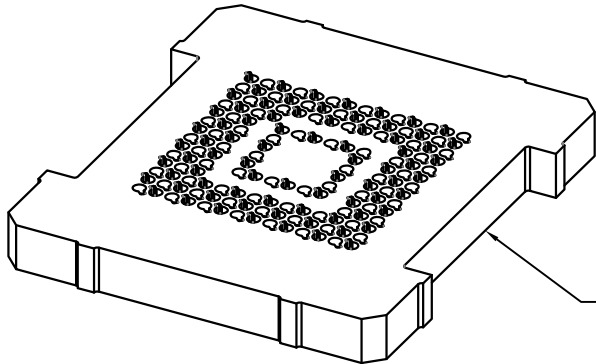


$\phi 0.365^{+0.025}_{-0.010}$	$\phi 0.01 \text{ (M) A B C}$	$\phi 0.01 \text{ (L) A B C}$
$\phi 0.10 \text{ (M) A E}$	$\phi 0.10 \text{ (L) A F}$	

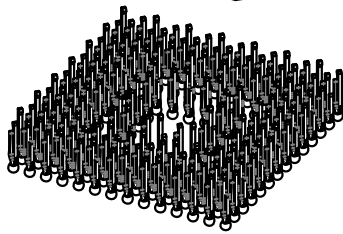
UNLESS OTHERWISE SPECIFIED		NAME	DATE	HSIO TECHNOLOGIES, LLC. 13300 67th AVENUE NORTH MAPLE GROVE, MINNESOTA 55311 763-447-6260
DIMENSIONS ARE IN MILLIMETERS TOLERANCES: HOLE: ± 0.1 XX ± 0.25 XXX ± 0.10 XXXX ± 0.050		DRAWN	J. Nield 08/30/11	
INTERPRET GEOMETRIC TOLERANCING PER		CHECKED	K. Wilson 08/30/11	TITLE: SCKT, 153G4011.5X13-0.50 W/SOLDER BALLS-SAC305 DWG. NO. 107250-0026 REV C
MATERIAL		LEGEND:		
SEE BDM FINISH		△ NOTE CALLOUT ○ REVISION CHANGE ○ ITEM NUMBER		
DO NOT SCALE DRAWING				SCALE: 10:1 SIZE: C SHEET 1 OF 2

SOCKET FOR DEVICES THAT ARE WITHIN THESE SPECIFICATIONS					
Lead Count	N	153	Package Size	D	11.50
Columns	ND	14		E	13.00
Rows	NE	14	Ball Spacing	D1	6.500
Pitch	e	0.50		E1	6.500
Ball Size	b	0.30±0.05	Encapsulant/ Top Size	D2	n/a
Total Thickness	A	n/a		E2	n/a
Ball Height	A1	0.225 min.	Pattern Style	IRREGULAR*	
Substrate Thickness	A2	n/a	Perimeter Rows	3	
Top Thickness	A3		Center Array	n/a	
Form Tolerances					
Edge	aaa	0.10	Bottom	ddd	0.08
Substrate	bbb	0.10	Position	eee	0.15
top	ccc	0.10	Position	fff	0.05

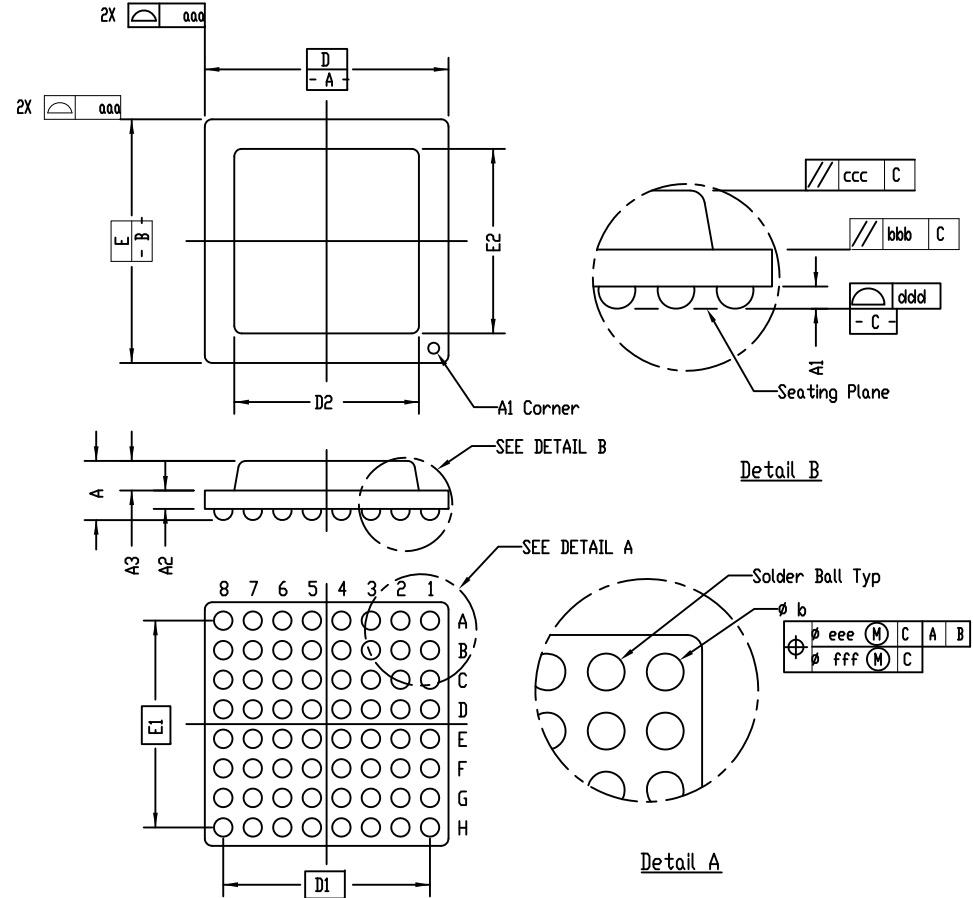
All dimensions are in millimeters.
* See footprint for pattern details.



HOUSING
107247-0026



153X CONTACT
104468-0015



Generic Representation with Full Grid Array

PROPRIETARY AND CONFIDENTIAL
THE INFORMATION CONTAINED IN THIS DRAWING IS THE SOLE PROPERTY OF HSID TECHNOLOGIES, LLC. ANY REPRODUCTION IN PART OR AS A WHOLE, WITHOUT THE WRITTEN PERMISSION OF HSID TECHNOLOGIES, LLC IS PROHIBITED.

UNLESS OTHERWISE SPECIFIED		NAME	DATE	HSID TECHNOLOGIES, LLC. 13300 67th AVENUE NORTH MAPLE GROVE, MINNESOTA 55311 763-447-6260
DIMENSIONS ARE IN MILLIMETERS		J. Nield	08/30/11	
TOLERANCES: ANGULAR ± 1° XX ± 0.25 XXX ± 0.10 XXXX ± 0.050		K. Wilson	08/30/11	DWG. NO. 107250-0026
LEGEND: △ NOTE CALLOUT ○ REVISION CHANGE ○ ITEM NUMBER		DRAWN		REV C
		CHECKED		SCALE: 5:1 SIZE: C SHEET 2 OF 2