



RAST

TE Internal #: 8-927742-2

Housing, Plug, Wire-to-Panel, 2 Position, .196 in [5 mm] Centerline, Crimp, 1 Row, Natural, Mating Retention, Wire & Cable, Power & Signal

[View on TE.com >](#)

Connectors > PCB Connectors > Wire-to-Board Connectors > Wire-to-Board Connector Assemblies & Housings



Connector Product Type: **Housing**

Connector & Housing Type: **Plug**

Connector System: **Wire-to-Panel**

Number of Positions: **2**

Centerline (Pitch): **5 mm [.196 in]**

Features

Product Type Features

| | |
|-----------------------------------|---------------|
| Connector Product Type | Housing |
| Connector & Housing Type | Plug |
| Connector System | Wire-to-Panel |
| Sealable | No |
| Connector & Contact Terminates To | Wire & Cable |

Configuration Features

| | |
|---------------------|---|
| Number of Positions | 2 |
| Number of Rows | 1 |

Body Features

| | |
|-----------------------|---------|
| Primary Product Color | Natural |
|-----------------------|---------|

Contact Features

| | |
|----------------|--------|
| Contact Layout | Inline |
| Contact Type | Tab |



Termination Features

| | |
|------------------------------------|-------|
| Termination Method to Wire & Cable | Crimp |
|------------------------------------|-------|

Mechanical Attachment

| | |
|--------------------------|-------------|
| Panel Mount Feature | With |
| Panel Mount Feature Type | Latches |
| Mating Retention Type | Latch |
| Mating Retention | With |
| Connector Mounting Type | Panel Mount |

Housing Features

| | |
|--------------------|----------------|
| Centerline (Pitch) | 5 mm [.196 in] |
|--------------------|----------------|

Usage Conditions

| | |
|-----------------------------|-----------------------------|
| Operating Temperature Range | -25 - 105 °C [-13 - 221 °F] |
|-----------------------------|-----------------------------|

Operation/Application

| | |
|---------------------|----------------|
| Circuit Application | Power & Signal |
|---------------------|----------------|

Product Compliance

[For compliance documentation, visit the product page on TE.com>](#)

| | |
|---|---|
| EU RoHS Directive 2011/65/EU | Compliant |
| EU ELV Directive 2000/53/EC | Compliant |
| China RoHS 2 Directive MIIT Order No 32, 2016 | No Restricted Materials Above Threshold |
| EU REACH Regulation (EC) No. 1907/2006 | Current ECHA Candidate List: JAN 2024 (240) Candidate List Declared Against: JAN 2024 (240) Does not contain REACH SVHC |
| Halogen Content | Not Low Halogen - contains Br or Cl > 900 ppm. |
| Solder Process Capability | Not applicable for solder process capability |

Product Compliance Disclaimer

This information is provided based on reasonable inquiry of our suppliers and represents our current actual knowledge based on the information they provided. This information is subject to change. The part numbers that TE has identified as EU RoHS compliant have a maximum concentration of 0.1% by weight in homogenous materials for lead, hexavalent chromium, mercury, PBB, PBDE, DBP, BBP, DEHP, DIBP, and 0.01% for cadmium, or qualify for an exemption to these limits as defined in the Annexes of Directive 2011/65/EU (RoHS2). Finished electrical and electronic equipment products will be CE marked as required by Directive 2011/65/EU. Components may not be CE marked. Additionally, the part numbers that TE has identified as EU ELV compliant have a maximum concentration of 0.1% by weight in homogenous materials for lead, hexavalent chromium, and mercury, and 0.01% for cadmium, or qualify for an exemption to these limits as defined in the Annexes of Directive 2000/53/EC (ELV). Regarding the REACH Regulation, the information TE provides

on SVHC in articles for this part number is based on the latest European Chemicals Agency (ECHA) 'Guidance on requirements for substances in articles' posted at this URL: <https://echa.europa.eu/guidance-documents/guidance-on-reach>

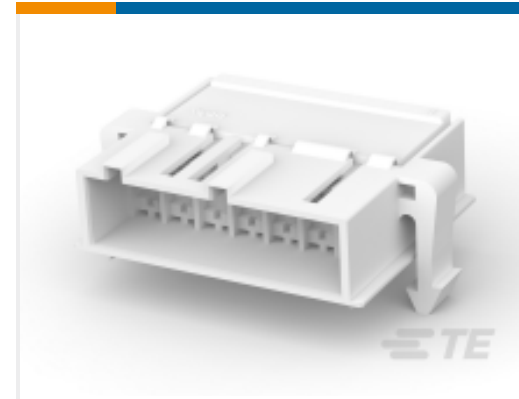
Compatible Parts



TE Part # 293008-1
3 POS. FASTIN-FASTON CONN. TAB HOUSING R



TE Part # 5-1241967-8
FASTIN FASTON TAB HOUSING 8P



TE Part # 293014-1
7 POS. FASTIN FASTON TAB HSG



TE Part # 1-1241968-5
FASTIN FASTON HOUSING 10P



TE Part # 1-293008-1
3 POS. FASTIN-FASTON CONN. TAB HOUSING R



TE Part # 293008-5
3 POS. FASTIN-FASTON CONN. TAB HOUSING R



TE Part # 293010-4
5 POS. FASTIN-FASTON CONN. TAB HOUSING R



TE Part # 8-927742-6
6 POS FASTIN/ON HOUSING PANEL MOUNT



TE Part # 1-928230-2
2 POS FASTIN/ON HOUSING PANEL MOUNT



TE Part # 1-293008-2
3 POS. FASTIN-FASTON CONN. TAB HOUSING R

Customers Also Bought



TE Part # 928343-4
STD TIMER GEH 4P



TE Part # 170014-6
FF 110 TAB 20-16AWG PTBR



TE Part # 9-927742-2
2POS FASTIN FASTON HOUSING



TE Part # 928343-2
STD-TIM GEH 2P



Documents

CAD Files

[3D PDF](#)

3D

Customer View Model

[ENG_CVM_CVM_8-927742-2_D.2d_dxf.zip](#)

English

Customer View Model

[ENG_CVM_CVM_8-927742-2_D.3d_igs.zip](#)

English

Customer View Model

[ENG_CVM_CVM_8-927742-2_D.3d_stp.zip](#)

English

By downloading the CAD file I accept and agree to the [Terms and Conditions](#) of use.

Datasheets & Catalog Pages

[RAST Connector System Catalog](#)

English

Product Specifications

[Product Specification](#)

English