

# Han K6/36 insert female

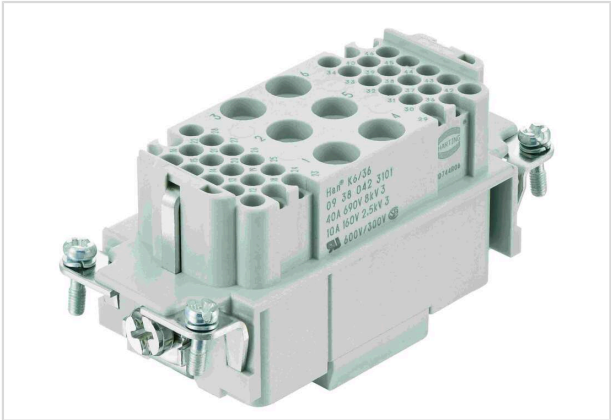


Image is for illustration purposes only. Please refer to product description.

Part number	09 38 042 3101
Specification	Han K6/36 insert female
HARTING eCatalogue	<a href="https://b2b.harting.com/09380423101">https://b2b.harting.com/09380423101</a>

## Identification

Category	Inserts
Series	Han-Com®
Identification	Han® K 6/36

## Version

Termination method	Crimp termination
Gender	Female
Size	16 B
Number of contacts	42
Number of signal contacts	36
Number of power contacts	6
PE contact	Yes
Details	Please order crimp contacts separately.

## Technical characteristics

Conductor cross-section	1.5 ... 6 mm² Power
	0.14 ... 2.5 mm² Signal
Wire outer diameter	≤5 mm
Rated current	40 A
Rated voltage	690 V
Rated impulse voltage	8 kV
Pollution degree	3
Rated current (signal)	10 A



**Pushing Performance**  
Since 1945

## Technical characteristics

Rated voltage (signal)	160 V
Rated impulse voltage (signal)	2.5 kV
Pollution degree (signal)	3
Rated current acc. to UL	40 A
Rated voltage acc. to UL	600 V
Rated current acc. to UL (signal)	10 A
Rated voltage acc. to UL (signal)	600 V
Rated current acc. to CSA	40 A
Rated voltage acc. to CSA	300 V
Rated current acc. to CSA (signal)	10 A
Rated voltage acc. to CSA (signal)	300 V
Insulation resistance	$>10^{10} \Omega$
Limiting temperature	-40 ... +125 °C
Mating cycles	$\geq 500$

## Material properties

Material (insert)	Polycarbonate (PC)
Colour (insert)	RAL 7032 (pebble grey)
Material flammability class acc. to UL 94	V-0
RoHS	compliant
ELV status	compliant
China RoHS	e
REACH Annex XVII substances	Not contained
REACH ANNEX XIV substances	Not contained
REACH SVHC substances	Not contained
California Proposition 65 substances	Yes
California Proposition 65 substances	Lead Nickel
Fire protection on railway vehicles	EN 45545-2 (2020-08)
Requirement set with Hazard Levels	R22 (HL 1-3) R23 (HL 1-3)

## Specifications and approvals

Specifications	IEC 60664-1 IEC 61984
----------------	--------------------------



Pushing Performance  
Since 1945

Specifications and approvals

UL / CSA	UL 1977 ECBT2.E235076
	CSA-C22.2 No. 182.3 ECBT8.E235076
Approvals	DNV GL

Commercial data

Packaging size	1
Net weight	76.2 g
Country of origin	Romania
European customs tariff number	85366990
GTIN	5713140056534
ETIM	EC000438
eCl@ss	27440205 Contact insert for industrial connectors