



Pushing Performance
Since 1945

Han Domino EE cube, crimp (F.1)

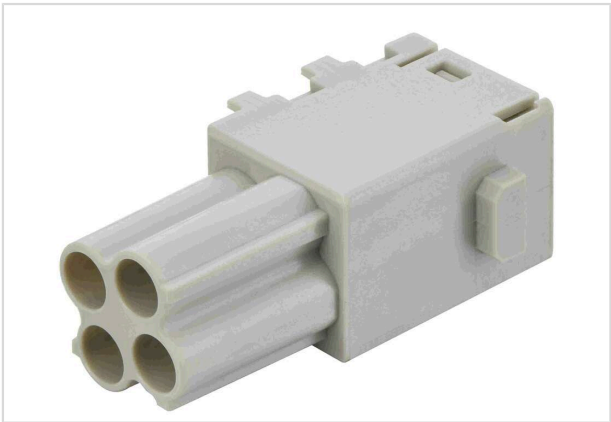


Image is for illustration purposes only. Please refer to product description.

Part number	09 14 904 1101
Specification	Han Domino EE cube, crimp (F.1)
HARTING eCatalogue	https://b2b.harting.com/09149041101

Identification

Category	Modules
Series	Han-Modular®
Type of module	Han® Domino EE Cube
Size of the module	Domino module
Description of the module	Small tab

Version

Termination method	Crimp termination
Gender	Female
Number of contacts	4
Details	Please order crimp contacts separately.

Technical characteristics

Conductor cross-section	0.14 ... 4 mm²
Rated current	16 A
Rated voltage	400 V
Rated impulse voltage	6 kV
Pollution degree	3
Rated voltage acc. to UL	600 V
Insulation resistance	>10 ¹⁰ Ω
Limiting temperature	-40 ... +125 °C
Mating cycles	≥500



Pushing Performance
Since 1945

Technical characteristics

Mating cycles with other HMC components $\geq 10,000$

Material properties

Material (insert)	Polycarbonate (PC)
Colour (insert)	RAL 7032 (pebble grey)
Material flammability class acc. to UL 94	V-0
RoHS	compliant
ELV status	compliant
China RoHS	e
REACH Annex XVII substances	Not contained
REACH ANNEX XIV substances	Not contained
REACH SVHC substances	Not contained
Fire protection on railway vehicles	EN 45545-2 (2020-08)
Requirement set with Hazard Levels	R22 (HL 1-3)
	R23 (HL 1-3)

Specifications and approvals

Specifications	IEC 60664-1
	IEC 61984
UL / CSA	UL 1977 ECBT2.E235076
	CSA-C22.2 No. 182.3 ECBT8.E235076

Commercial data

Packaging size	2
Net weight	5.3 g
Country of origin	Romania
European customs tariff number	85366990
GTIN	5713140185111
ETIM	EC000438
eCl@ss	27440217 Module for industrial connectors (power/signals)