



Pushing Performance  
Since 1945

# Han 300A PE axial module 95-120mm² male

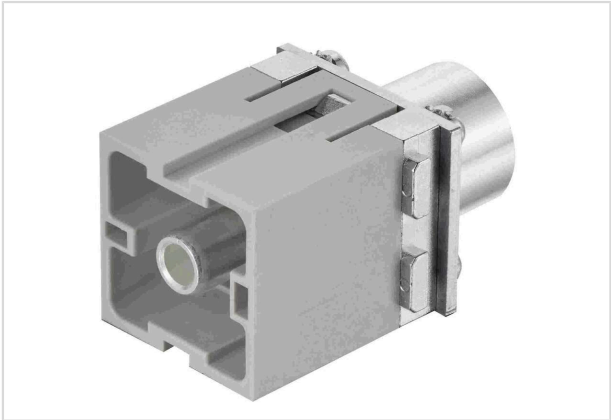


Image is for illustration purposes only. Please refer to product description.

Part number	09 14 001 2681
Specification	Han 300A PE axial module 95-120mm² male
HARTING eCatalogue	<a href="https://b2b.harting.com/09140012681">https://b2b.harting.com/09140012681</a>

## Identification

Category	Modules
Series	Han-Modular®
Type of module	Han® 300 A PE module
Size of the module	Double module

## Version

Termination method	Axial screw termination
Gender	Male
Number of contacts	1

## Technical characteristics

Conductor cross-section	95 ... 120 mm²
Insulation resistance	>10 <sup>10</sup> Ω
Contact resistance	≤0.2 mΩ
Stripping length	19 ... 20 mm
Tightening torque	14 Nm @ 95 mm² 16 Nm @ 120 mm²
Limiting temperature	-40 ... +125 °C
Mating cycles	≥500

## Material properties

Material (insert)	Polycarbonate (PC)
Colour (insert)	RAL 7032 (pebble grey)



**Pushing Performance**  
Since 1945

## Material properties

Material (contacts)	Copper alloy
Surface (contacts)	Silver plated
Material flammability class acc. to UL 94	V-0
RoHS	compliant with exemption
RoHS exemptions	6(c): Copper alloy containing up to 4 % lead by weight
ELV status	compliant with exemption
China RoHS	50
REACH Annex XVII substances	Not contained
REACH ANNEX XIV substances	Not contained
REACH SVHC substances	Yes
REACH SVHC substances	Lead
ECHA SCIP number	5dbb3851-b94e-4e88-97a1-571845975242
California Proposition 65 substances	Yes
California Proposition 65 substances	Lead
Fire protection on railway vehicles	EN 45545-2 (2020-08)
Requirement set with Hazard Levels	R22 (HL 1-3)
	R23 (HL 1-3)

## Specifications and approvals

Specifications	IEC 60664-1
	IEC 61984

## Commercial data

Packaging size	1
Net weight	94 g
Country of origin	Germany
European customs tariff number	85389099
GTIN	5713140184497
ETIM	EC000438
eCl@ss	27440217 Module for industrial connectors (power/signals)